

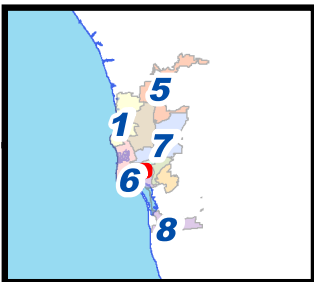
## BALBOA PARK PIPELINE REPLACEMENT PHASE II

SENIOR ENGINEER  
ALEX SLEIMAN, P.E.  
619-533-7588

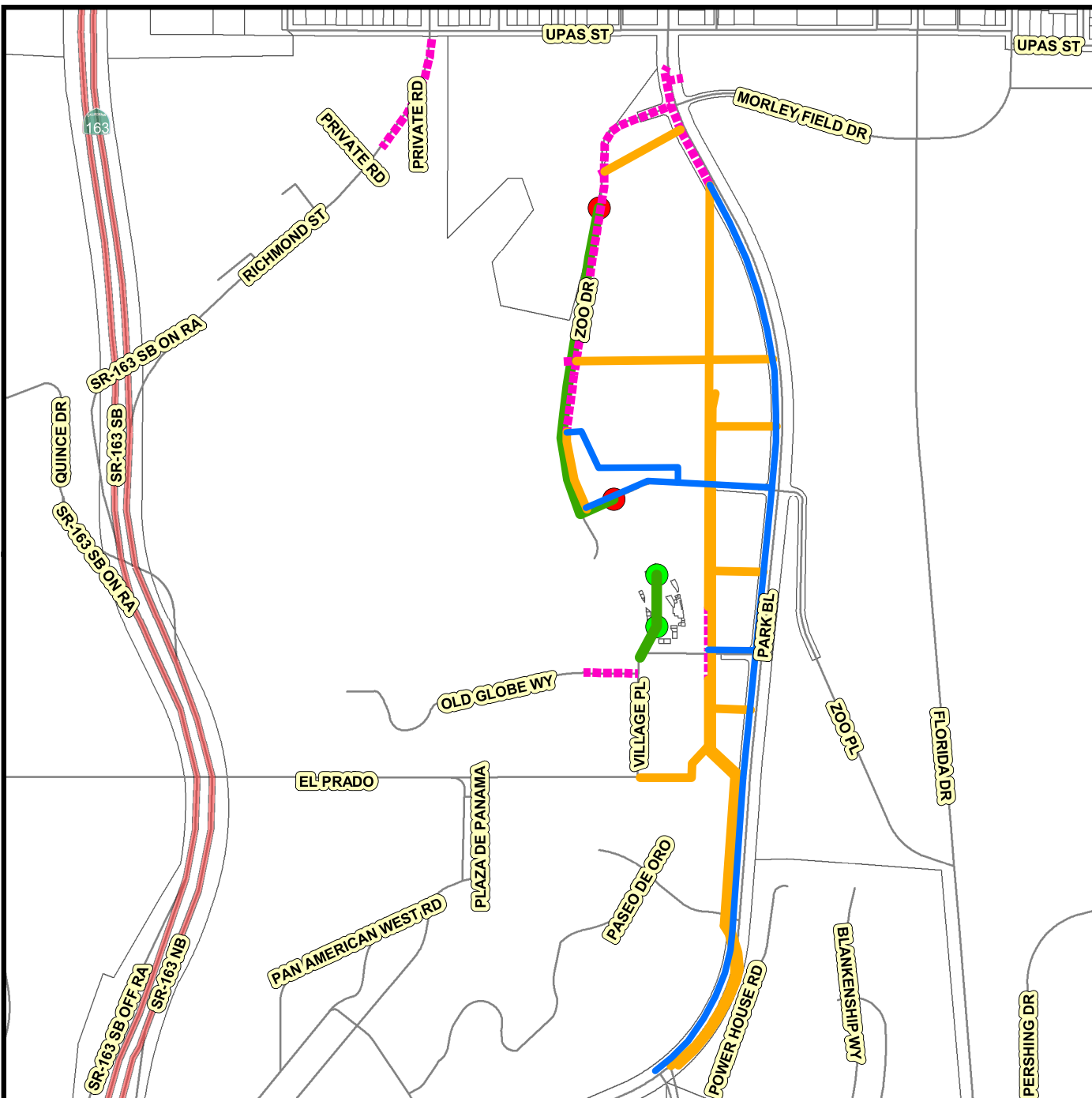
PROJECT MANAGER  
SABEEN COCHINWALA  
619-533-4661

PROJECT ENGINEER  
SAL CASTILLO  
619-533-4609

FOR QUESTIONS ABOUT THIS PROJECT  
Call: 619-533-4207  
Email: [engineering@sandiego.gov](mailto:engineering@sandiego.gov)



THIS MAP/DATA IS PROVIDED WITHOUT WARRANTY OF ANY KIND, EITHER EXPRESS OR IMPLIED, INCLUDING, BUT NOT LIMITED TO, THE IMPLIED WARRANTIES OR MERCHANTABILITY AND FITNESS FOR A PARTICULAR PURPOSE. Note: This product may contain information reproduced with permission granted by RAND MCNALLY & COMPANY. It is unlawful to copy or reproduce all or any part thereof, whether for personal use or resale, without the prior, written permission of RAND MCNALLY & COMPANY.



### Legend

- New Water
- Water Replacement
- New Manhole
- Water Abandonment
- Proposed Sewer
- Manhole Relocation

Date: March 14, 2019

B17133 (S)



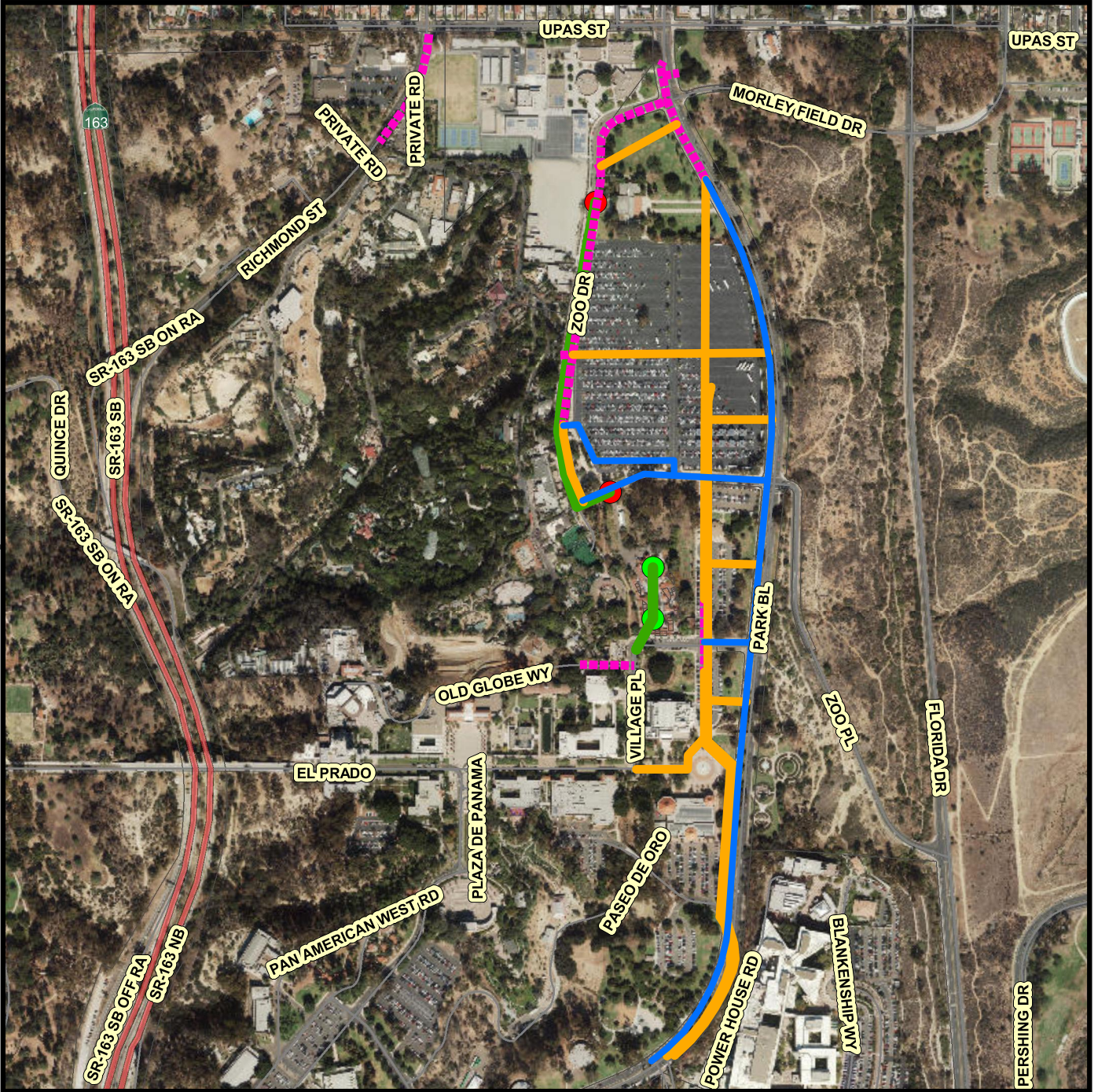
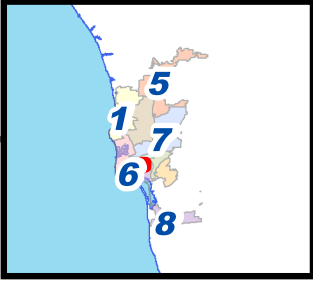
**BALBOA PARK PIPELINE REPLACEMENT PHASE II**

SENIOR ENGINEER  
ALEX SLEIMAN, P.E.  
619-533-7588

PROJECT MANAGER  
SABEEN COCHINWALA  
619-533-4661

PROJECT ENGINEER  
SAL CASTILLO  
619-533-4609

FOR QUESTIONS ABOUT THIS PROJECT  
Call: 619-533-4207  
Email: [engineering@sandiego.gov](mailto:engineering@sandiego.gov)



**Legend** Date: March 14, 2019

- New Water
- Water Replacement
- New Manhole
- Water Abandonment
- Proposed Sewer
- Manhole Relocation

B17133 (S)



THIS MAP/DATA IS PROVIDED WITHOUT WARRANTY OF ANY KIND, EITHER EXPRESS OR IMPLIED, INCLUDING, BUT NOT LIMITED TO, THE IMPLIED WARRANTIES OR MERCHANTABILITY AND FITNESS FOR A PARTICULAR PURPOSE. Note: This product may contain information reproduced with permission granted by RAND MCNALLY & COMPANY® to SanGIS. This map is copyrighted by RAND MCNALLY & COMPANY®. It is unlawful to copy or reproduce all or any part thereof, whether for personal use or resale, without the prior, written permission of RAND MCNALLY & COMPANY.