

Balboa Park Committee #201

Park Mobility Improvements and Water Pipeline Repaving Coordination

July 21, 2022

Outline

Agenda

- Review of project coordination and planned bike network
- Outreach to date
- Design direction
- Discussion and Action

Engineering and Capital Projects

Capital Improvement Program

Balboa Park Pipeline Replacement (Water)

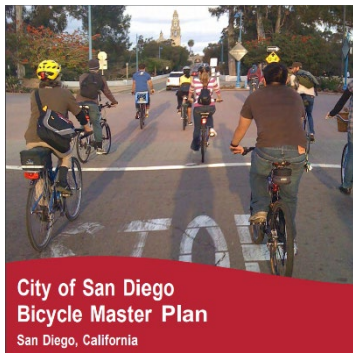
- B17140 and B17141
 - Curb Ramps
 - July through August 2022
 - Paving and Restriping
 - October through December 2022



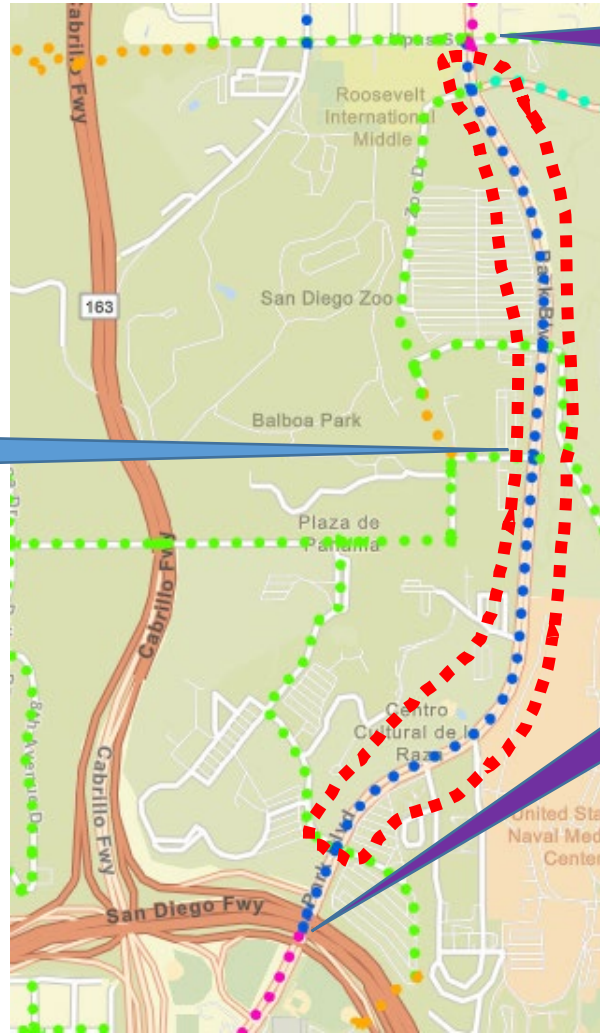
Planned Bike Network

Park Blvd

Bicycle Master Plan (2013)

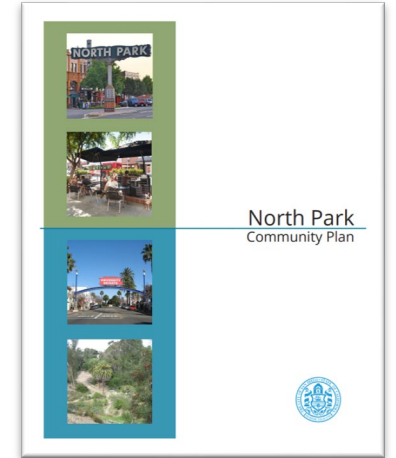


Class II:
Bike Lane

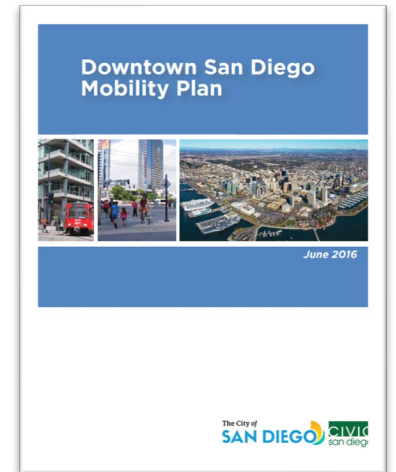


North Park Community Plan (2016)

Class IV:
Separated
Bikeway



Class IV:
Separated
Bikeway



Downtown Mobility Plan (2016)

Background

Past meetings

Balboa Park Committee

May 5

June 2

Mobility Board

July 2

Institutional Outreach Meetings

June 30

San Diego Unified School District

July 6

Air and Space Museum,

Balboa Park Cultural Partnership

July 7

San Diego City College

July 7

Forever Balboa Park

July 8

Old Town Trolley

July 8

Zoo

July 12

Metropolitan Transit System (MTS)

July 13

US Navy

July 14

World Beat Center

July 19

Centro Cultural de la Raza

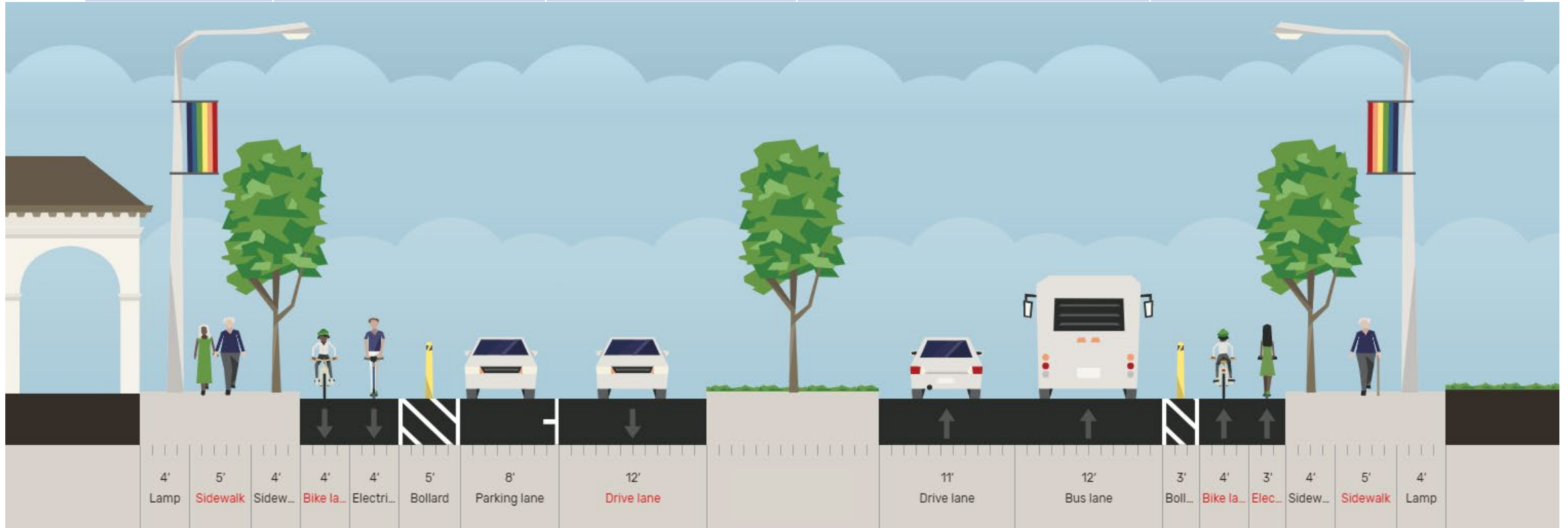


Design Alternatives

Design Alternatives	Bike	Bus	Parking	General Vehicle Lanes	Policy Goal Changes +/-
Existing Conditions	Sharrow	None	Curbside	2 lanes	Transit - Bikes -
A	Bus/Bike Lane	Bus Lane	Curbside	1 lane	Transit + Bikes +/-
B	Bike Lane	General Travel Lane	Curbside	1 lane	Transit - Bikes +
C	Separated Bikeway	General Travel Lane	Floating	1 lane	Transit - Bikes ++
D	Separated Bikeway	Bus Lane	Removed*	1 lane	Transit +++ Bikes ++
E	Door Zone	Mirror Overhang	Curbside	2 lanes	Transit +/- Bikes - -
Hybrid C/D	Separated Bikeway	Bus Lane (when no parking)	Curbside (at key locations)	1 (plus turn lanes)	Transit ++ Bikes ++

NEW Hybrid Alternative C/D

Bike	Bus	Parking	General Vehicle Lanes	Policy Goal Changes +/-
Separated	Bus Lane (when no parking)	Curbside (in key locations)	1 lanes (plus turn lanes)	Transit ++ Bikes ++



Plan View

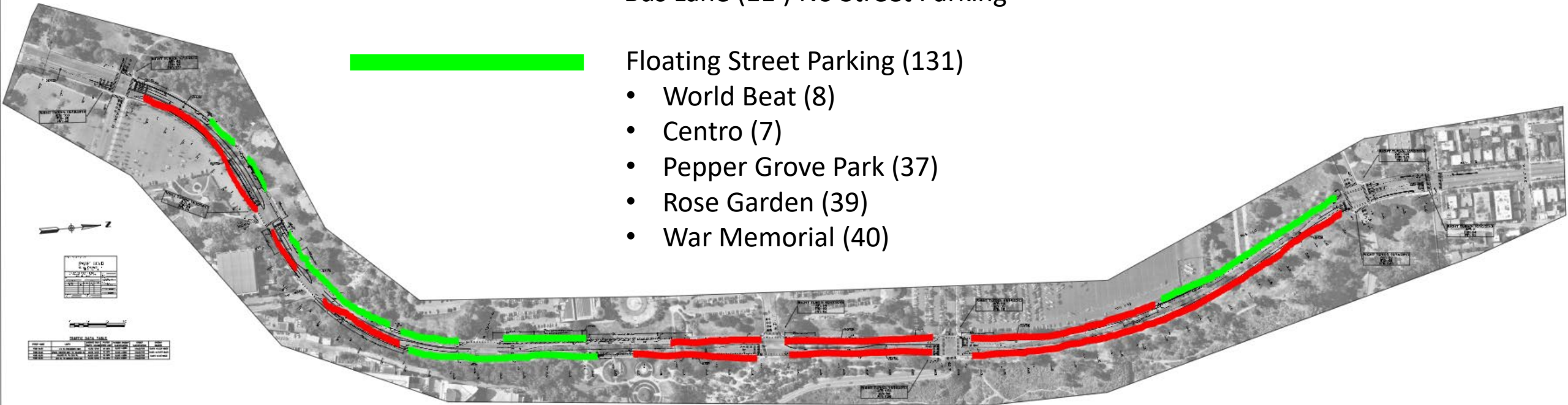


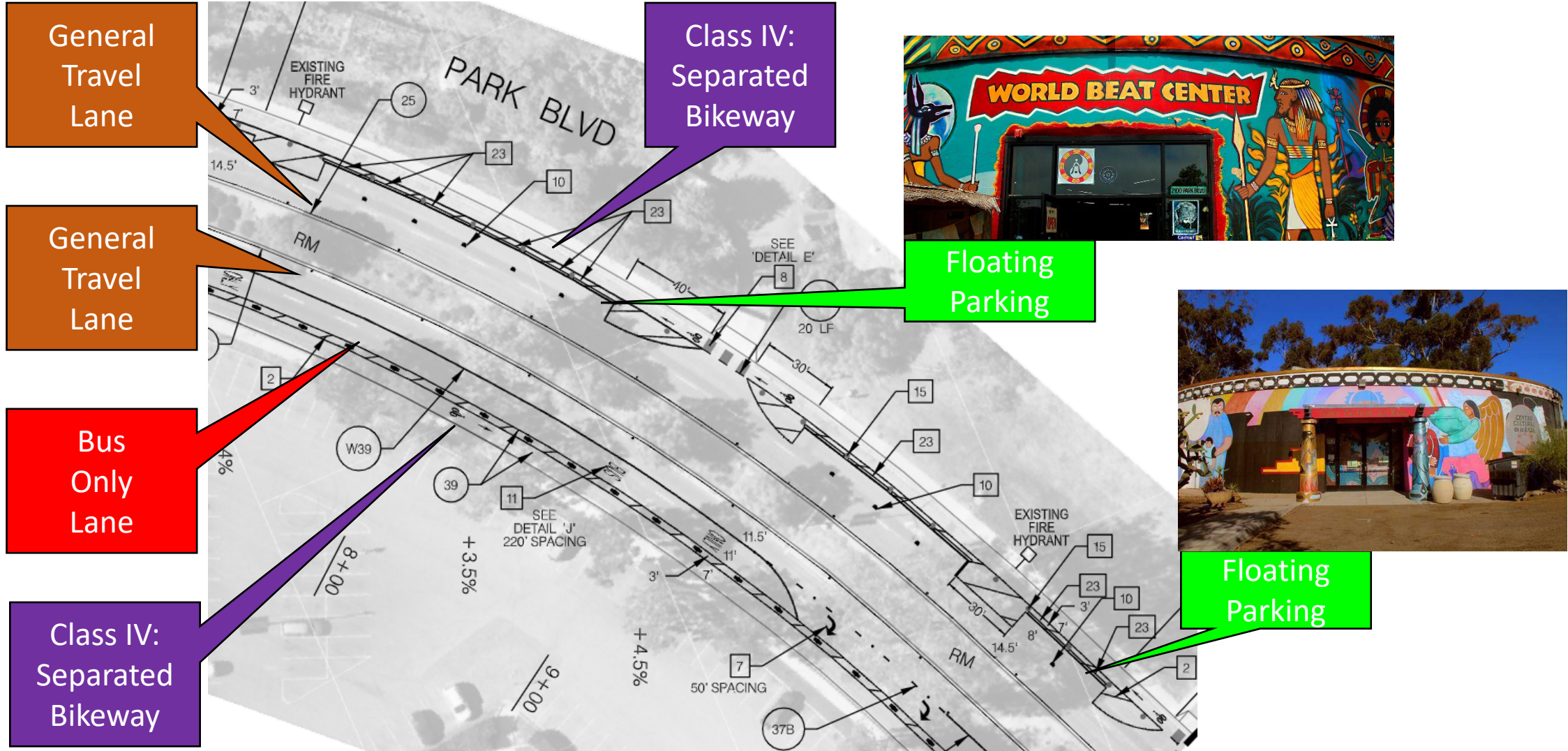
Bus Lane (11') No Street Parking

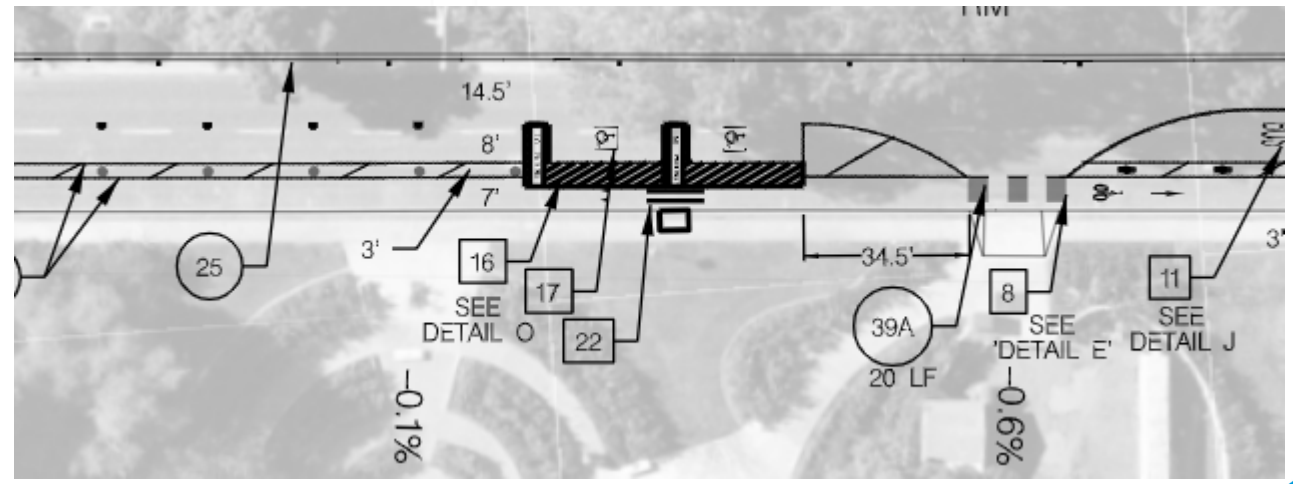
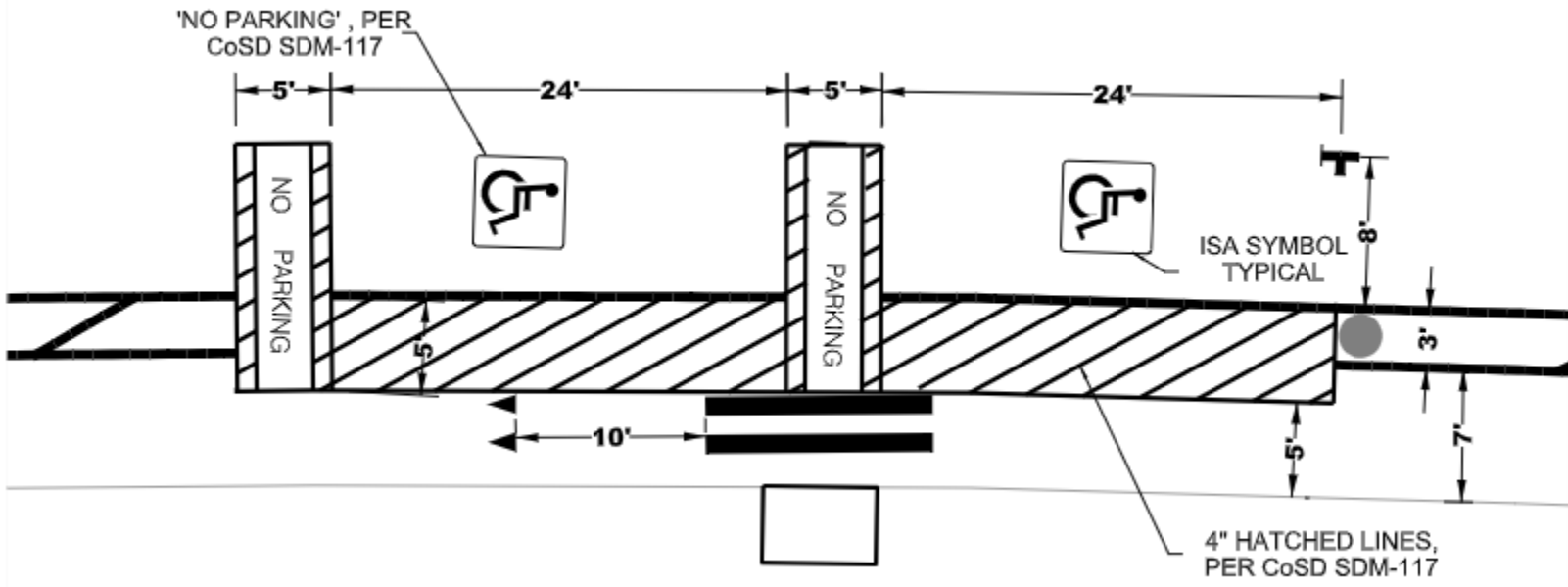


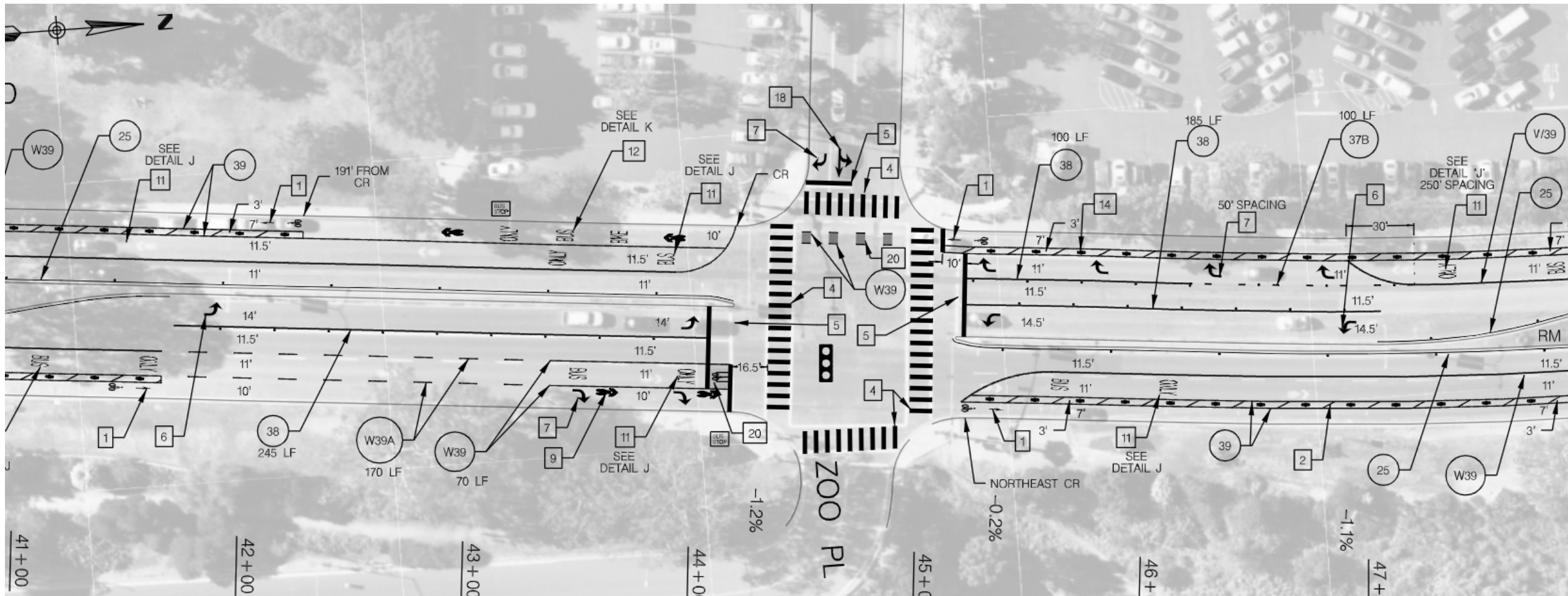
Floating Street Parking (131)

- World Beat (8)
- Centro (7)
- Pepper Grove Park (37)
- Rose Garden (39)
- War Memorial (40)

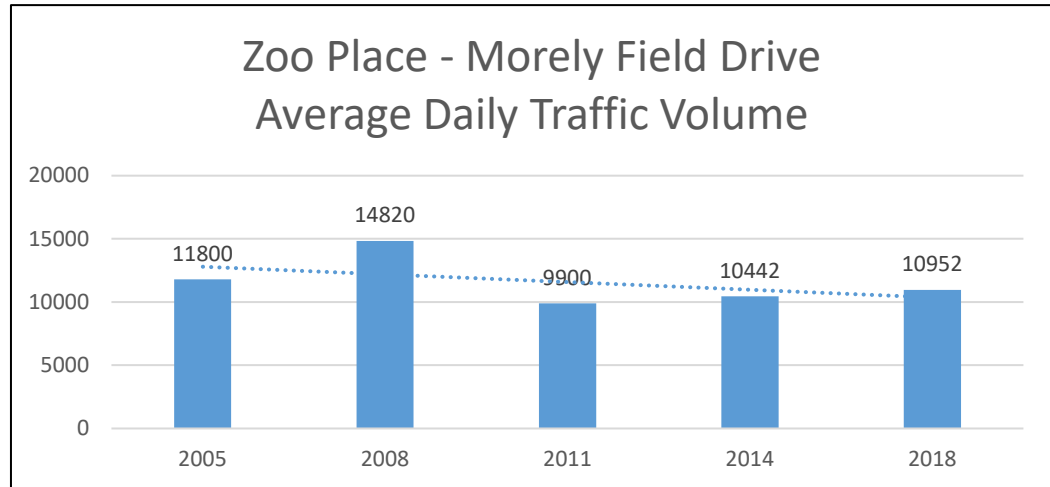
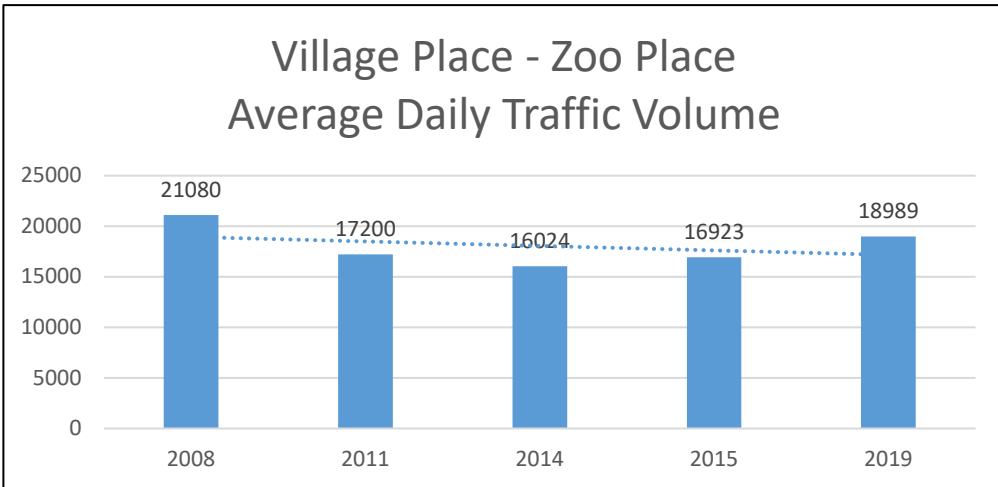
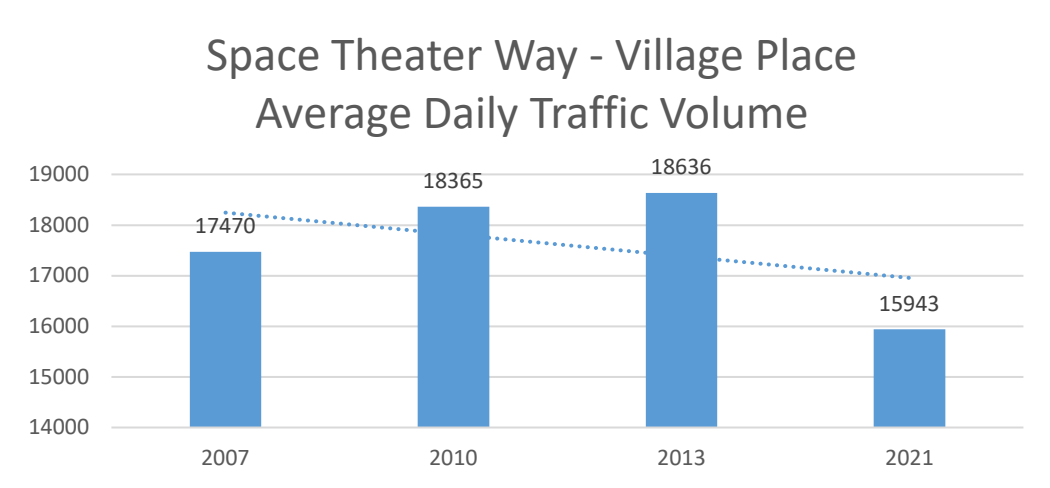
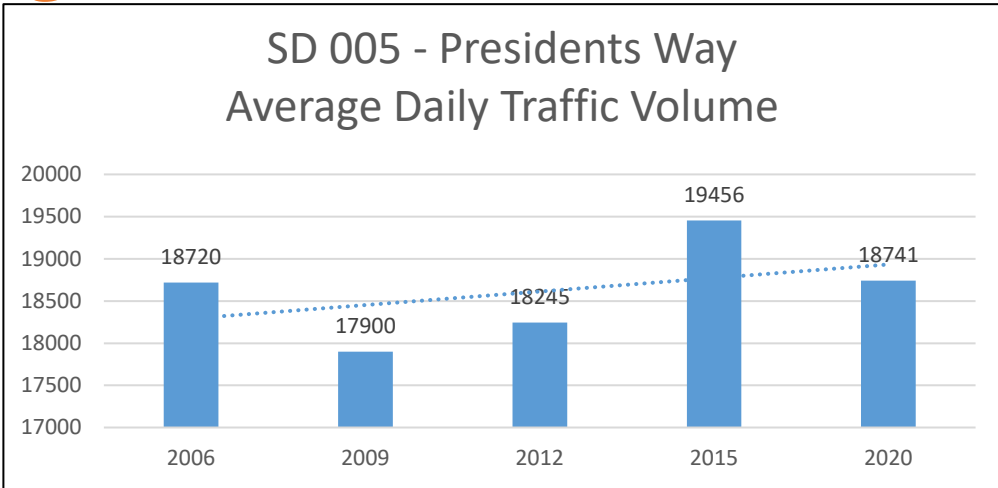








Park Blvd Segment Volumes



Park Blvd Intersection Operations

Existing

Intersection #	Intersection Name	Delay	LOS
1	Park Blvd & Presidents Way	40.9	D
2	Park Blvd & Inspiration Point Way	3.2	A
3	Park Blvd & Village Place	21.1	C
4	Park Blvd & Zoo Place	116.0	F
5	Park Blvd & Zoo Drive/Morley Field Drive	89.4	F
6	Park Blvd & Upas Street	10.1	B

With Project*

Intersection #	Intersection Name	Delay	LOS
1	Park Blvd & Presidents Way	61.9	E
2	Park Blvd & Inspiration Point Way	4.6	A
3	Park Blvd & Village Place	21.4	C
4	Park Blvd & Zoo Place	131.7	F
5	Park Blvd & Zoo Drive/Morley Field Drive	155.4	F
6	Park Blvd & Upas Street	9.8	A

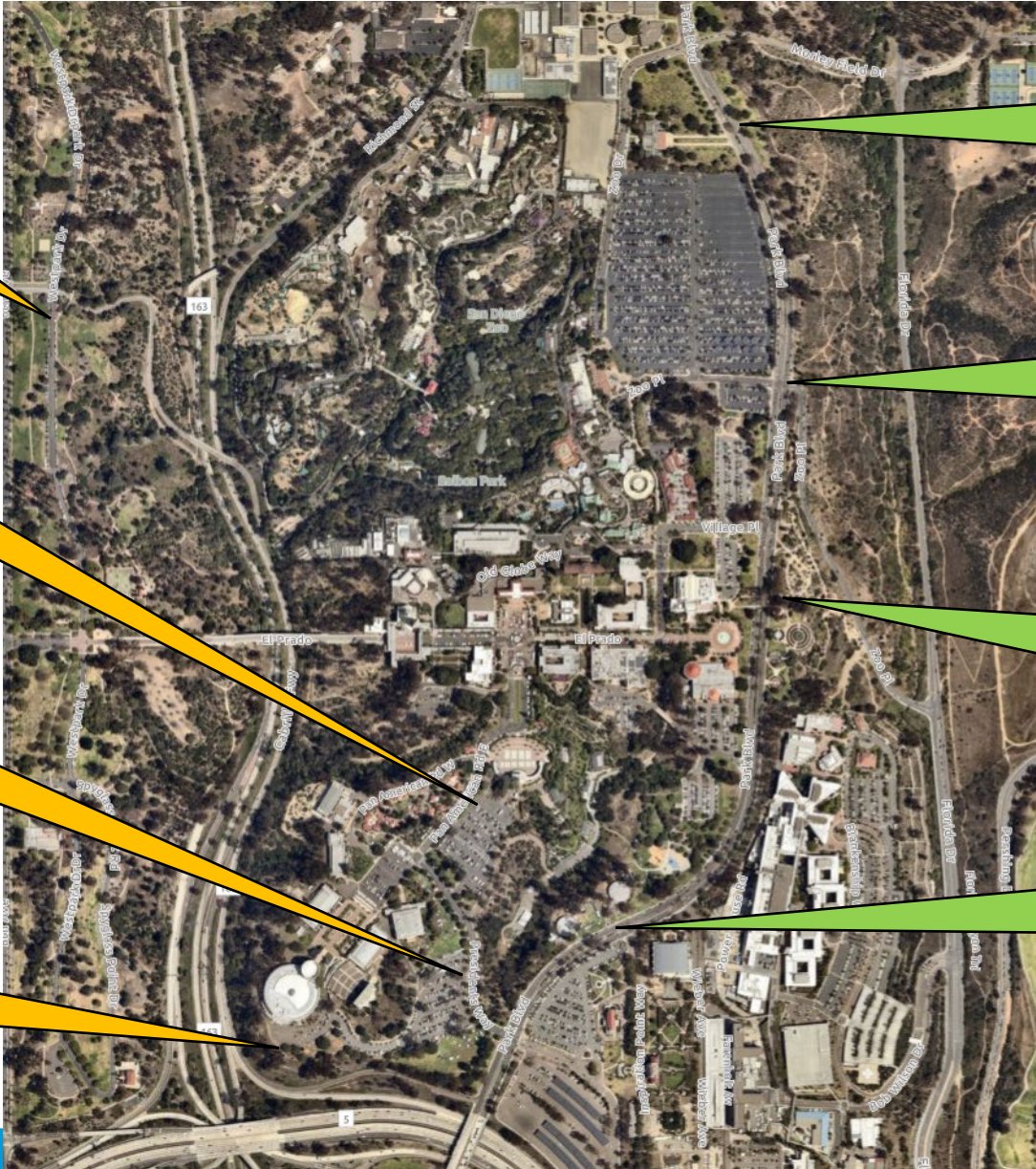
Initial Syncro run; subject to observation, refinement, timing changes and improvement

Balboa Drive
Angle Parking
Evaluation

Organ Pavilion Lot
Restriping

Presidents Way
Resurfacing
Evaluation

Federal Lot
Evaluation



Continuous
Evaluation of
Operations

Intersection
Operations

Traffic Volume
Monitoring

Evaluate for new
crossings/CIPs

Concurrent Mobility Efforts - Parking

- ❑ Balboa Drive – Angled Parking, Four-Hour Timed (no cost), Way-Finding Signage to All Day Parking options (*FY 23 Budget*)
- ❑ Organ Pavilion Lot – Resurfacing with Parking restriping to improve flow and increase parking (*Conceptual Design FY 23*)
- ❑ Alcazar Gardens Parking Lot – Review of ADA, Trash Enclosures with Parking restriping on South Side
- ❑ Federal Lot (Behind Starlight Bowl) – Resurfacing and Parking restriping to improve flow

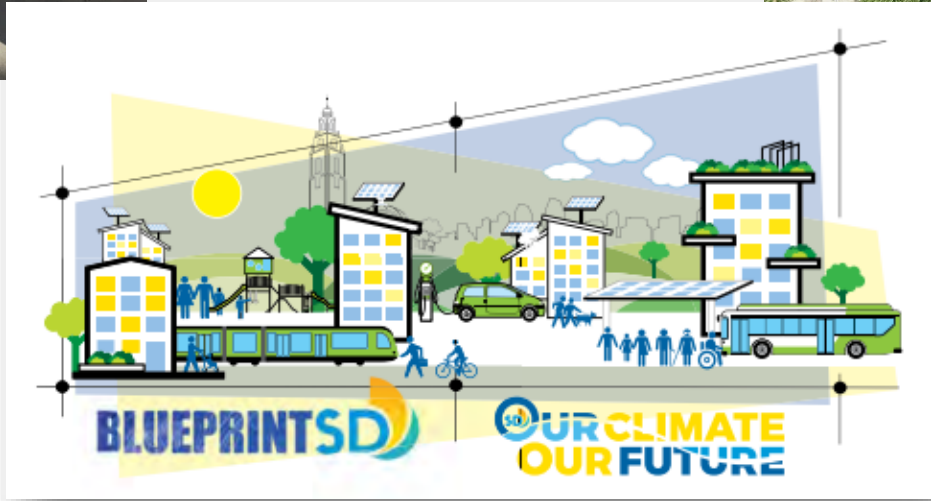
Concurrent Mobility Efforts - Comprehensive

- Bike Racks – Park-wide bike parking and installation
- Traffic Signal Timing and Signage – Review for improvements surrounding the park
- MTS – Explore MTS Branded Loops
- Circulator Updates – Extended connections, connection to Zoo parking lot, new vehicles
- Drop-Off & Pick-Up – Uber and Lyft and other TNC Loading Zones
- ADA – Prioritize missing connections and parking in needed areas



City Mobility Loading Prioritization

- WALKING & ROLLING**
- BIKING & MICROMOBILITY**
- PUBLIC TRANSIT**
- SHARED VEHICLES**
- ELECTRIC VEHICLES**





Workshop Conclusion

Thank you all for all your time, feedback and engagement!