

Balboa Park Committee

Park Mobility Improvements and Water Pipeline Repaving Coordination

May 5, 2022

Outline

Agenda

- Mayor's Office introduction
- Mobility/Transportation Needs of Balboa Park
- Balboa Park Parking Inventory
- Pipeline Paving Coordination Alternatives Evaluated
- Discussion, Comments and Next Steps

Background

Council Priorities

City Council Infrastructure Budget Priorities

The following infrastructure needs were listed as FY 2023 budget priorities by a majority or more of Councilmembers. These are discussed later in this report.

- Transportation and Mobility Safety (*unanimous*)
- Streets (*unanimous*)
- Sidewalks (*unanimous*)
- Stormwater
- Facilities
- Americans with Disabilities Act (ADA)

https://www.sandiego.gov/sites/default/files/22-01_fy23_city_council_budget_priorities_complete_rpt.pdf

Mobility Department

Pre-Pandemic Workshop

Identified Priorities

- Mobility Including Circulation, Parking and ADA & Accessibility Were Top Priorities

- Connecting All Corners of the Park for All Visitors

- How to Approach a Complex Issue:
 - ❑ Coordinated Circulation and Parking Solutions
 - ❑ "Low-Hanging Fruit" or Near-Term Solutions
 - ❑ Mid- and Long-Range Opportunities

- Community and Interdepartmental Collaboration are Essential

Mobility Department

Comprehensive Mobility Opportunities

Community and Stakeholder Workshop Feedback & Ideas:

Parking Availability and Management Ideas

- Balboa Drive – Angled and Timed (4 hour) Parking
- Parking Spot Availability (e.g., Cultural Partnership Sensors)
- Organ Pavilion Restriping and Redesign

ADA and Accessibility Improvements

- ADA Parking Spaces
- Curb Ramps and Sidewalk Connections

Circulators and Shuttles

- Opportunities to Connect to Zoo, West Edge of Park and East Mesa
- Employee Supportive Times and Routes

Signage and Wayfinding

- Signage for Timed and Long-Term (Day Use) Parking Areas
- Wayfinding for ADA and Circulators

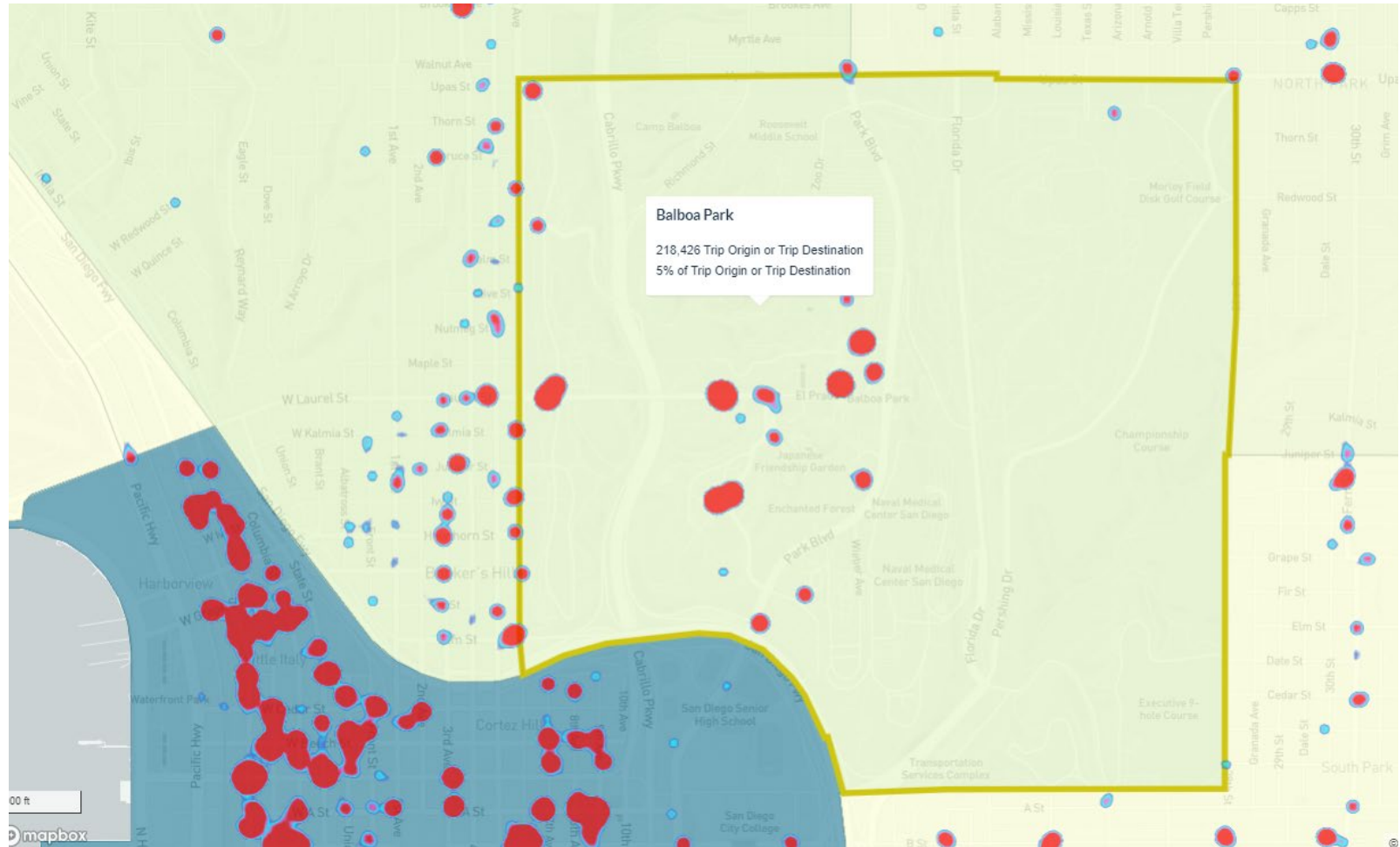
Active Mobility Solutions

- Getting to the Park
- Bike Racks and Employee Bike Lockers
- Corrals and Geo-Fencing



Mobility Department

Micro-Mobility Demand



Park and Recreation

Parking Totals

Palisades: 1,097 spaces

- Organ Pavilion Lot
- Palisades Lot
- Federal Lots

East Prado: 852 spaces

- North Carousel Lot
- South Carousel Lot
- Pepper Grove North Lot
- Pepper Grove South Lot
- Casa de Balboa Lot
- Village Place
- Botanical Lot

West Prado: 158 spaces

- Alcazar Lot
- Museums/Old Globe

Inspiration Point: 1,457 spaces

- Inspiration Point North Lot
- Inspiration Point South Lot
- Inspiration Point Way
- Wieber Drive

Zoo Lots: 3,596 spaces

Park Blvd: 335 spaces

GRAND TOTAL: 7,468



Engineering and Capital Projects

Capital Improvement Program

Balboa Park Pipeline Replacement (Water)

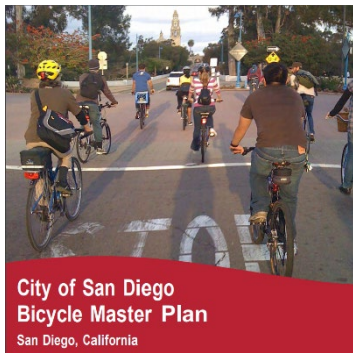
- B17140 and B17141
 - Curb Ramps
 - July through August 2022
 - Paving and Restriping
 - September through December 2022



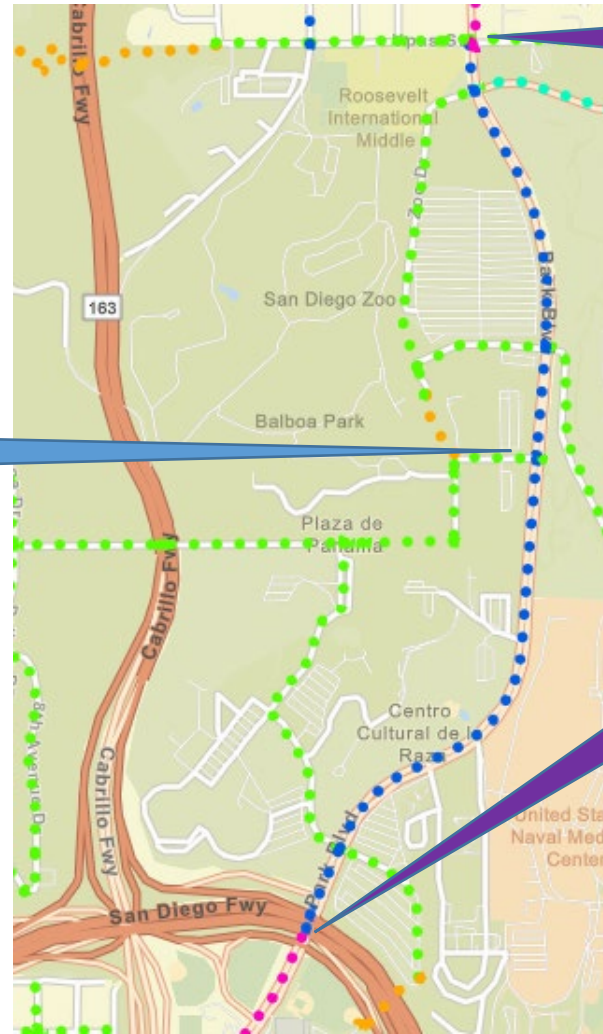
Planned Bike Network

Park Blvd

Bicycle Master Plan (2013)

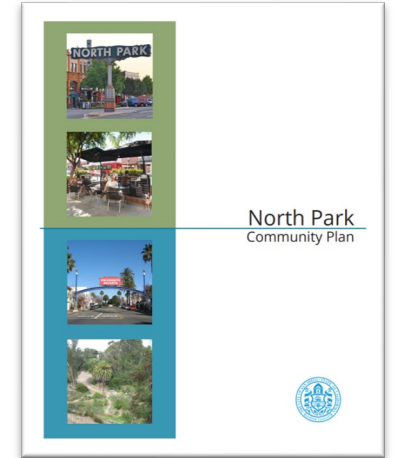


Class II:
Bike Lane

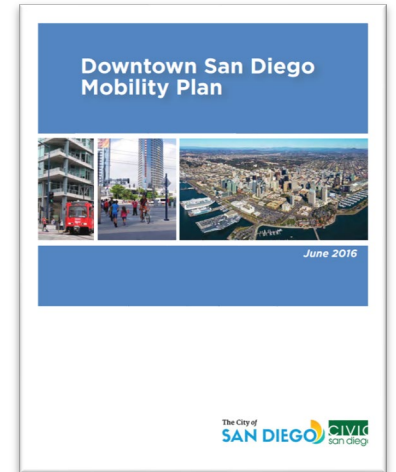


North Park Community Plan (2016)

Class IV:
Separated
Bikeway



Class IV:
Separated
Bikeway



Downtown Mobility Plan(2016)

Design Alternatives

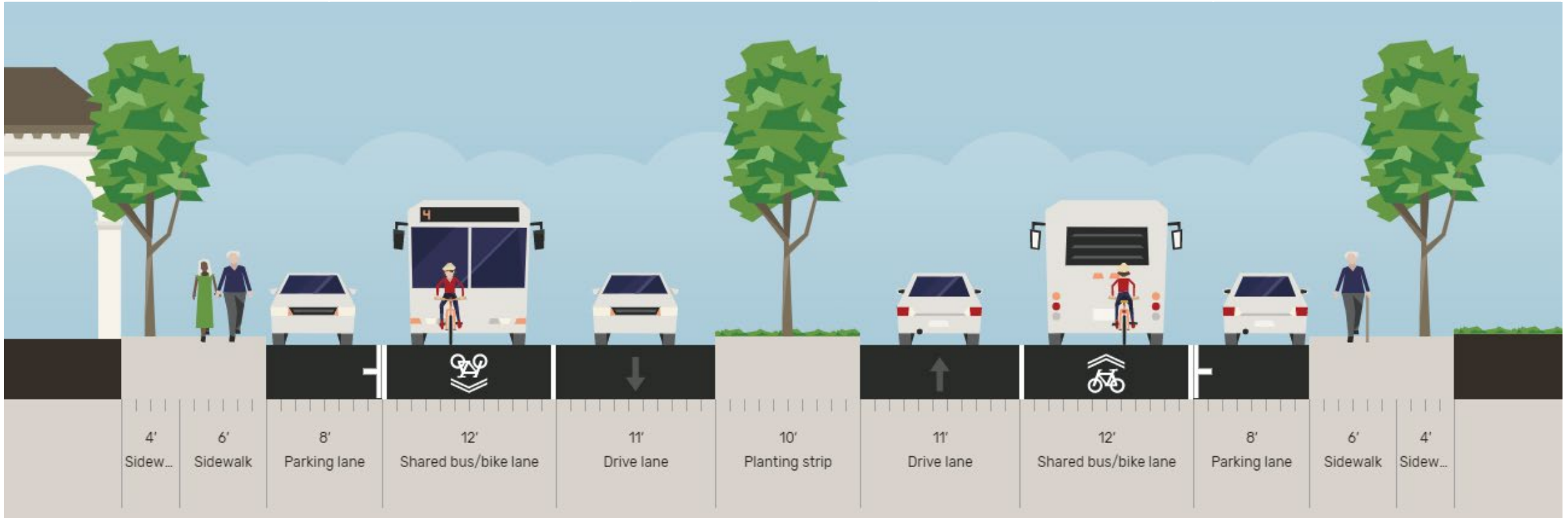
Design Alternatives	Bike	Bus	Parking	General Vehicle Lanes	Policy Goal Changes +/-
Existing Conditions	Sharrow	None	Curbside	2 lanes	Transit - Bikes -
A	Bus/Bike Lane	Bus Lane	Curbside	1 lane	Transit + Bikes +/-
B	Bike Lane	General Travel Lane	Curbside	1 lane	Transit - Bikes +
C	Separated Bikeway	General Travel Lane	Floating	1 lane	Transit - Bikes ++
D	Separated Bikeway	Bus Lane	Removed*	1 lane	Transit ++ Bikes ++
E	Door Zone	Mirror Overhang	Curbside	2 lanes	Transit +/- Bikes - -

Existing Conditions



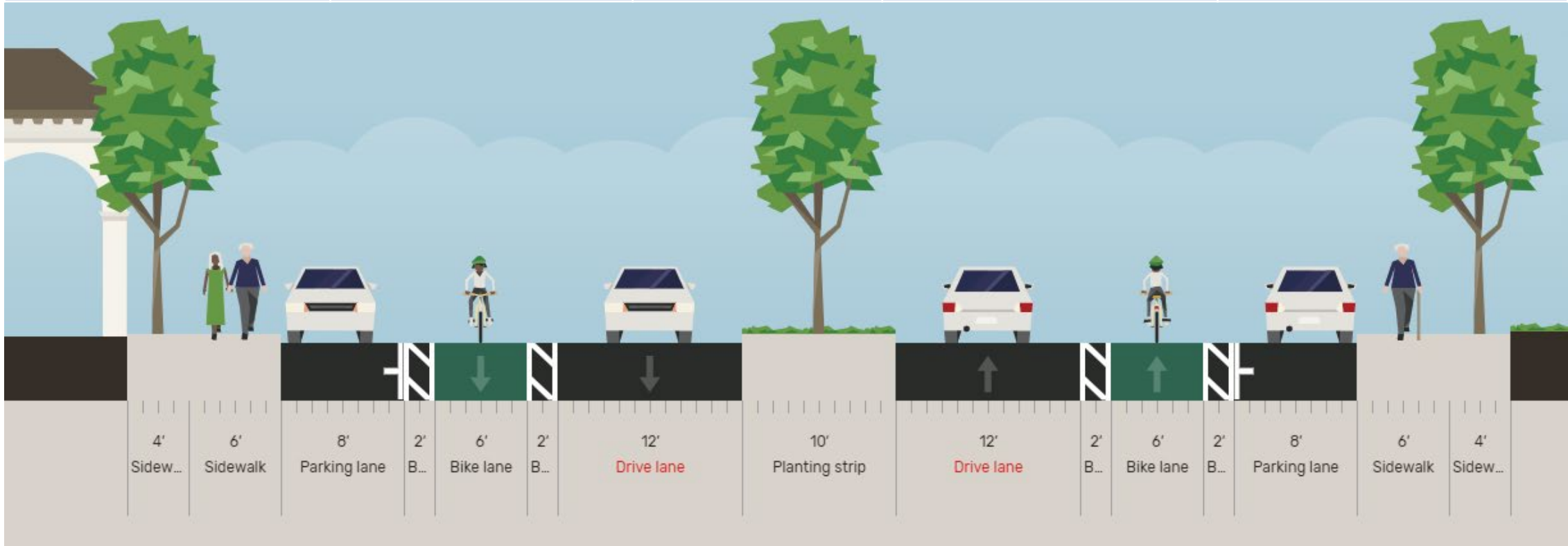
Alternative A

Bike	Bus	Parking	General Vehicle Lanes	Policy Goal Changes +/-
Bus/Bike Lane	Bus Lane	Curbside	1 lane	Transit + Bikes +/-



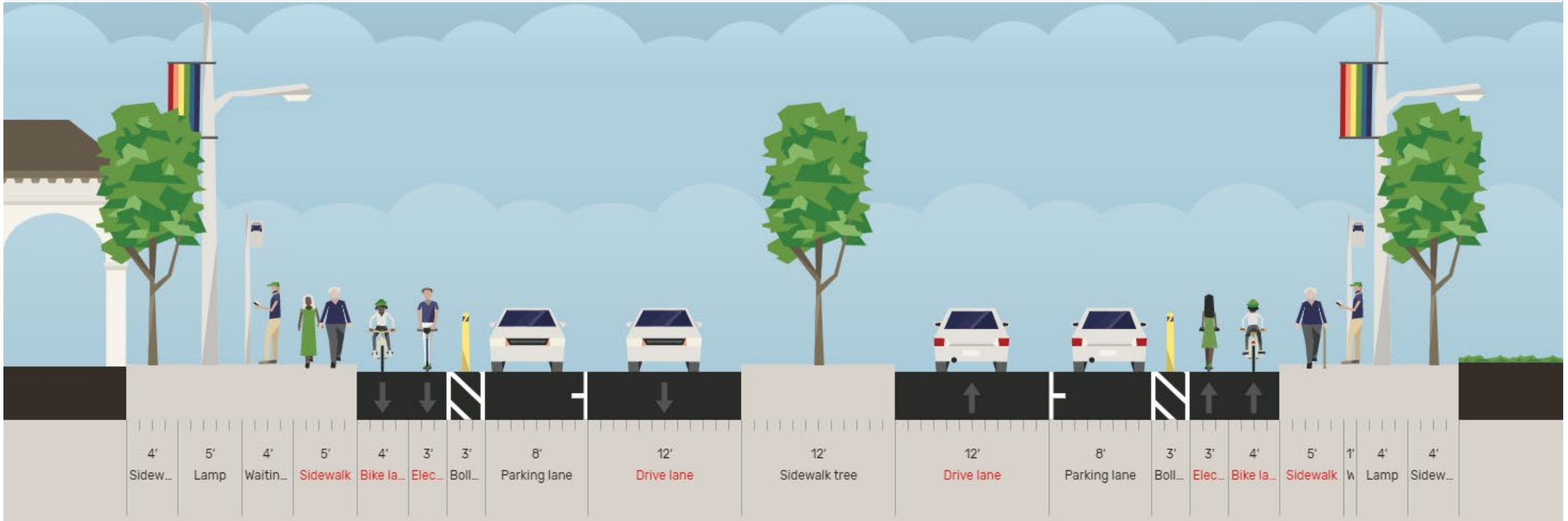
Alternative B

Bike	Bus	Parking	General Vehicle Lanes	Policy Goal Changes +/-
Bike Lane	General Travel Lane	Curbside	1 lane	Transit - Bikes +



Alternative C

Bike	Bus	Parking	General Vehicle Lanes	Policy Goal Changes +/-
Separated Bikeway	General Travel Lane	Floating	1 lane	Transit - Bikes ++



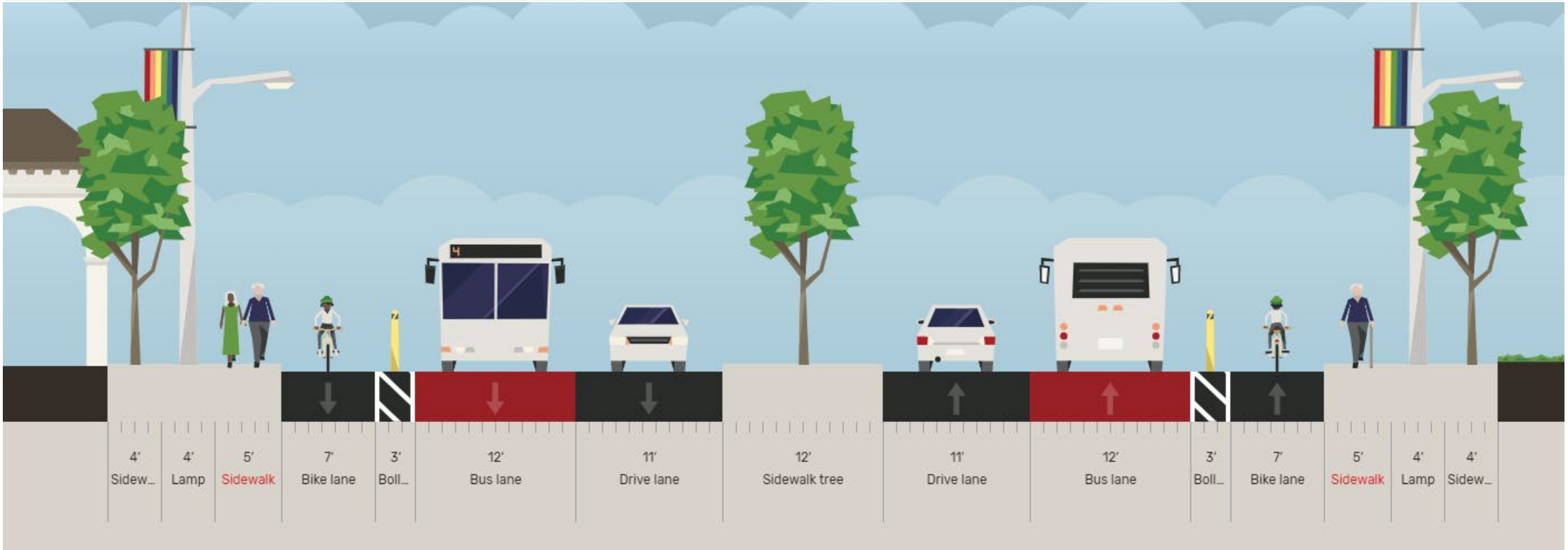


Design Alternative C and Floating Parking

Floating Parking			<u>DRAFT</u> Alternative C		Existing Counts		
Street	From	To	West Side	East Side		West	East
Park Blvd	Presidents Way	Inspiration Point	16	20		22	17
	Inspiration Point	Space Theater Way	37	59		32	30
	Space Theater Way	Rose Garden Bridge	24			15	6
Subtotal			77	79		69	52
	Rose Garden Bridge	Village Place	6	8		6	12
	Village Place	Zoo Place	13	16		14	22
	Zoo Place	Morely Field Drive	58	72		58	72
Subtotal			77	96		78	104
Totals			154	175		147	156
Grand Total			329		109%	306	

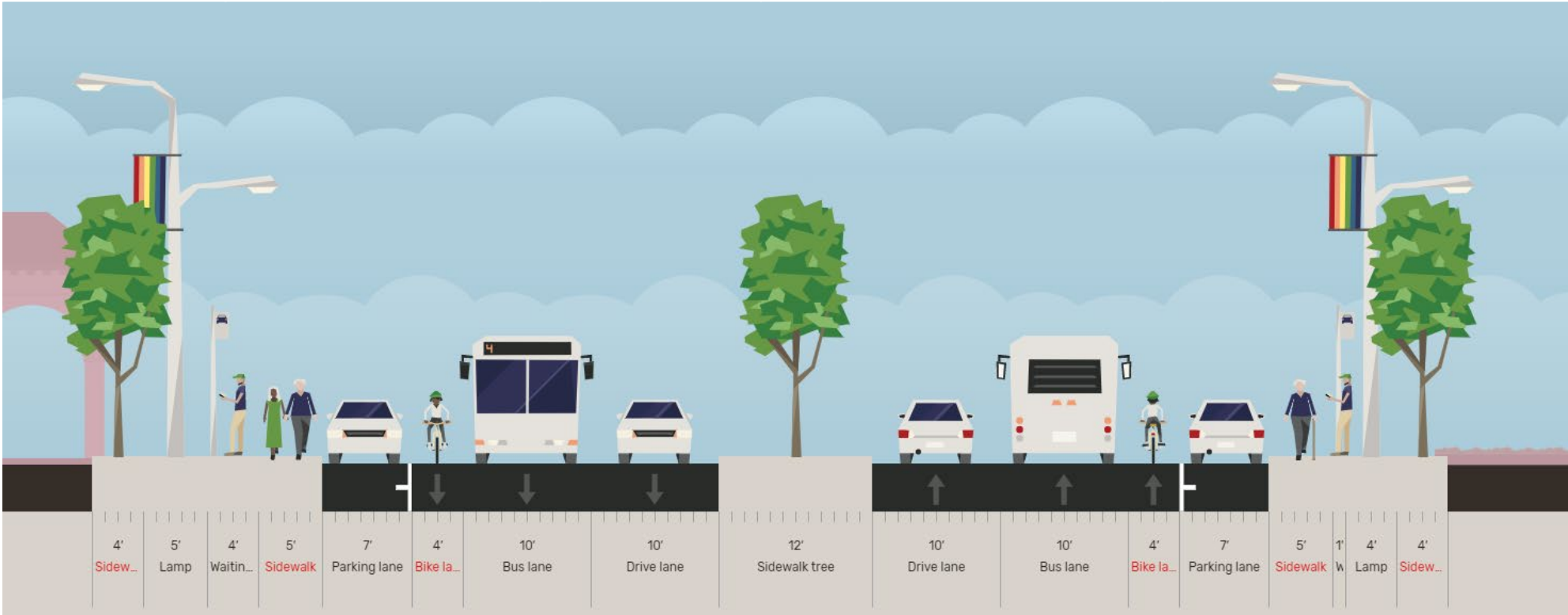
Alternative D

Bike	Bus	Parking	General Vehicle Lanes	Policy Goal Changes +/-
Separated Bikeway	Bus Lane	Removed	1 lane	Transit ++ Bikes ++



Alternative E (does not fit/functionally infeasible)

Bike	Bus	Parking	General Vehicle Lanes	Policy Goal Changes +/-
Door Zone	Mirror Overhang	Curbside	2 lanes	Transit +/- Bikes - -



Workshop Conclusion

- Discussion
- Public Comments
- Board member Comments
- Return for action/recommendation