



Public Works Department
Right of Way Division

June 12, 2020

Subject: Sewer and Storm Drain Group 828 –Site Development Permit Phase

Dear Balboa Park Committee:

The intent of this letter is to inform you on the status of the subject project. The Site Development Permit is currently being reviewed by the Development Services Department. Enclosed please find the project location map and fact sheet for your review.

The Sewer and Storm Drain Group 828 project replaces approximately 9,000 linear feet of the existing sewer mains and extends existing storm drain into the canyon at Maple Street, Olive Street and Palm Street. The project also includes installation of curb ramps and street resurfacing.

The project is scheduled to start construction in late 2021. Construction work is anticipated to be completed in late 2022. Once the contract has been awarded to a construction firm, the Public Works Department's Construction Management and Field Services Division will take the lead on outreach to the community and the residents through a series of notices during construction. These include a mailed notice 30 days prior to construction work and a door hanger placed on businesses and residences along streets one week prior to construction work starting.

Please review the project and let me know if you have any recommendations for the Site Development Permit.

If you have any questions or concerns with regards to this project, please contact me at 619) 533 - 4661.

Sincerely,

Sabeen Cochinwala
Project Manager

Enclosures: Location Map
Fact Sheet

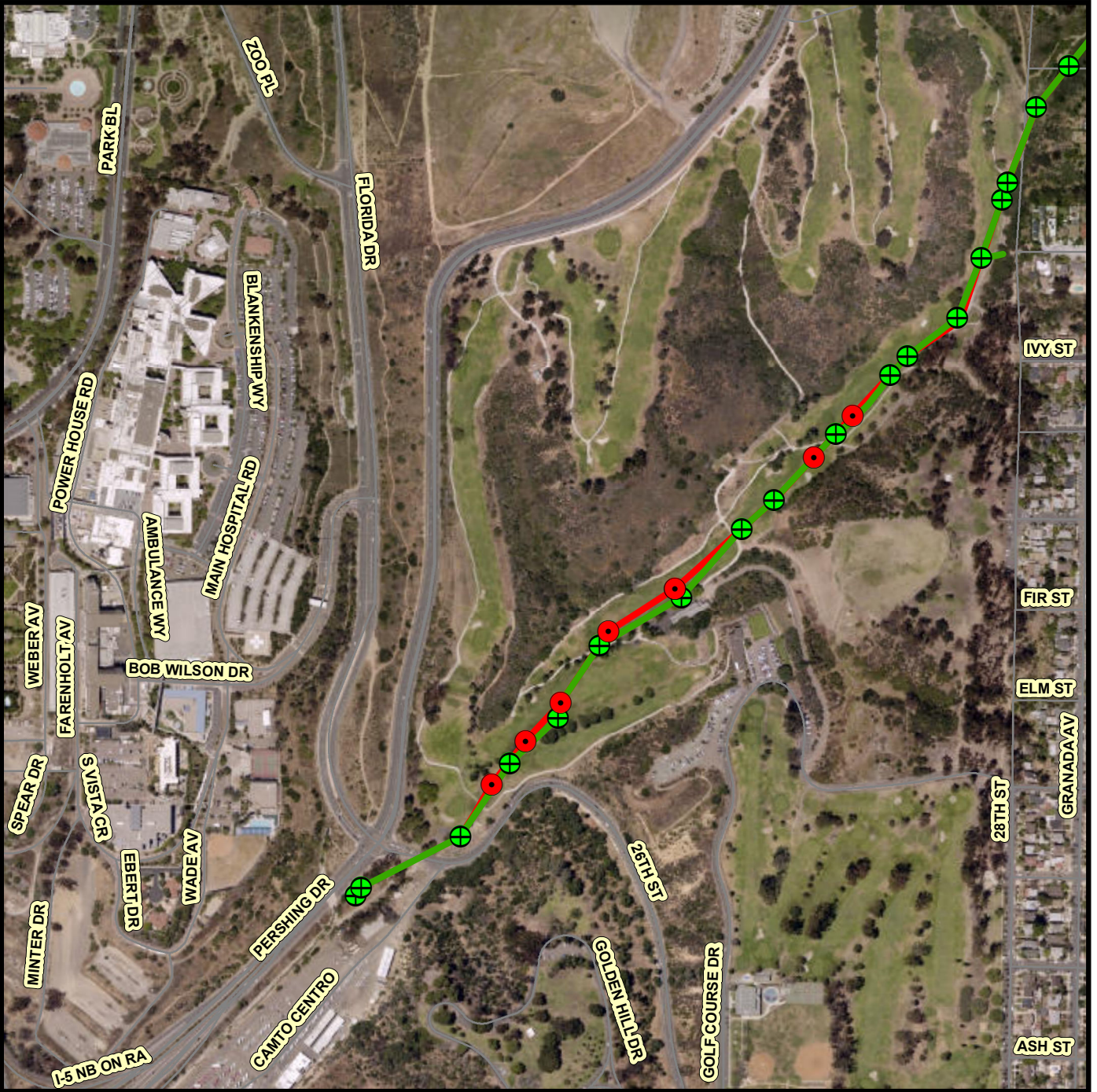
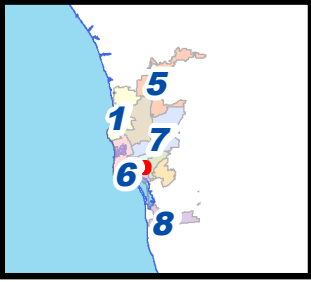
Sewer & Storm Drain Group 828

SENIOR ENGINEER
Alex Sleiman
(619) 533-7588

PROJECT MANAGER
Sabeen Cochinwala
(619) 533-4661

PROJECT ENGINEER
Valery Polyak
(619) 533-5495

FOR QUESTIONS ABOUT THIS PROJECT
Call: 619-533-4207
Email: engineering@sandiego.gov



Legend

- ABANDON EX SEWER MH
- ⊕ PROPOSED SEWER MH
- ABANDON EX SEWER MAIN
- PROPOSED SEWER MAIN (TRENCHLESS)



THIS MAP/DATA IS PROVIDED WITHOUT WARRANTY OF ANY KIND, EITHER EXPRESS OR IMPLIED, INCLUDING, BUT NOT LIMITED TO, THE IMPLIED WARRANTIES OR MERCHANTABILITY AND FITNESS FOR A PARTICULAR PURPOSE. Note: This product may contain information reproduced with permission granted by RAND MCNALLY & COMPANY to SanGIS. This map is copyrighted by RAND MCNALLY & COMPANY. It is unlawful to copy or reproduce all or any part thereof, whether for personal use or resale, without the prior, written permission of RAND MCNALLY & COMPANY.

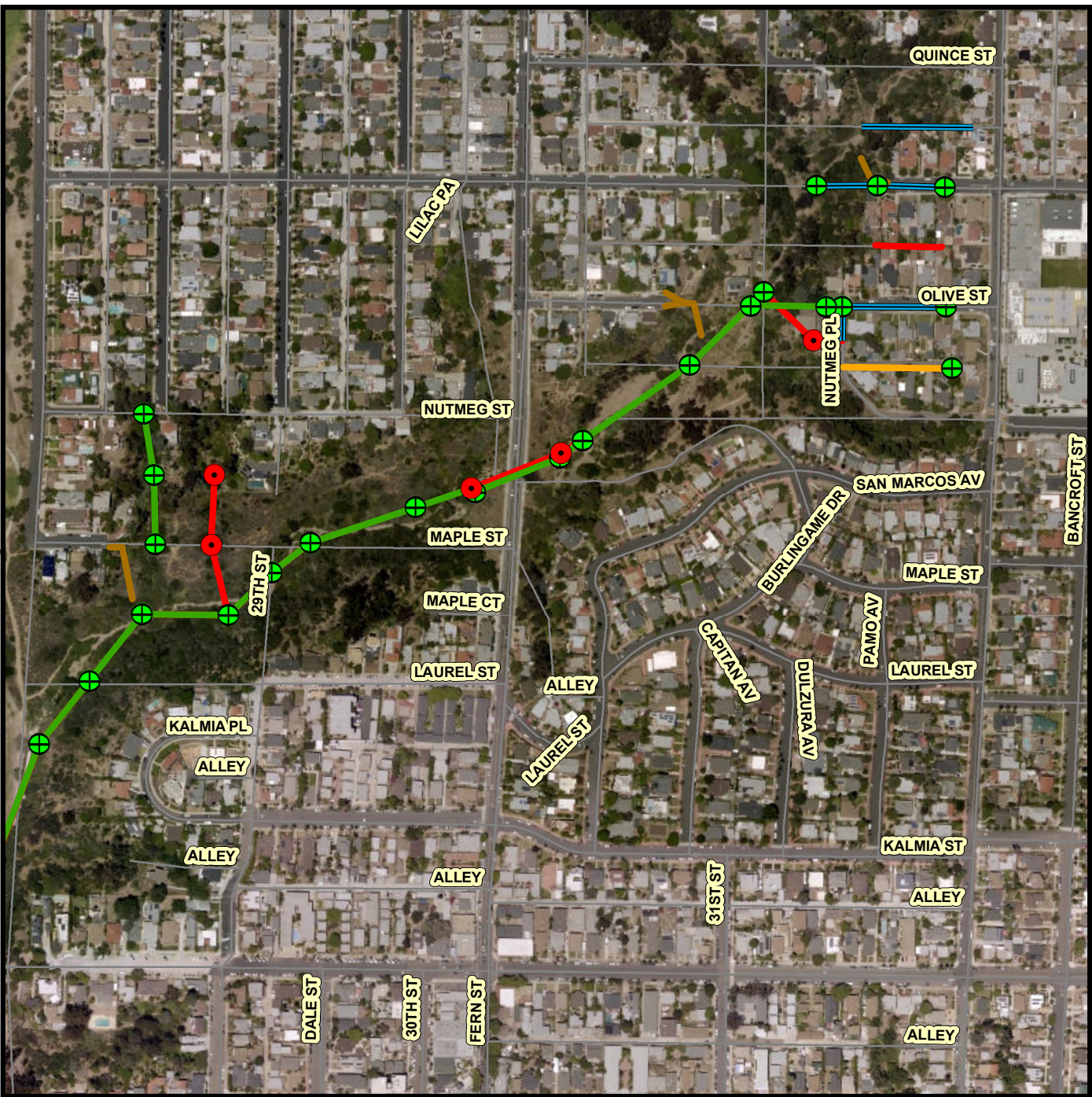
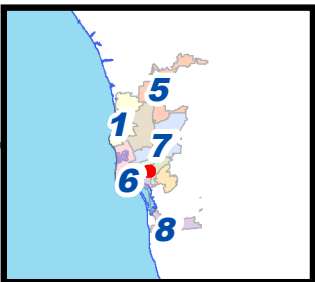
Sewer & Storm Drain 828

SENIOR ENGINEER
Alex Sleiman
(619) 533-7588

PROJECT MANAGER
Sabeen Cochinwala
(619) 533-4661

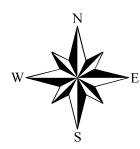
PROJECT ENGINEER
Valery Polyak
(619) 533-5495

FOR QUESTIONS ABOUT THIS PROJECT
Call: 619-533-4207
Email: engineering@sandiego.gov



Legend

- ABANDON EX SEWER MH
- ⊕ PROPOSED SEWER MH
- ABANDON EX SEWER MAIN
- PROPOSED SEWER MAIN (TRENCHLESS)
- PROPOSED SEWER MAIN (NEW TRENCH)
- STORM DRAIN
- PROPOSED SEWER MAIN (REPLACE IN PLACE DEEPER THAN EXISTING)



THIS MAP/DATA IS PROVIDED WITHOUT WARRANTY OF ANY KIND, EITHER EXPRESS OR IMPLIED, INCLUDING, BUT NOT LIMITED TO, THE IMPLIED WARRANTIES OR MERCHANTABILITY AND FITNESS FOR A PARTICULAR PURPOSE. Note: This product may contain information reproduced with permission granted by RAND MCNALLY & COMPANY to SanGIS. This map is copyrighted by RAND MCNALLY & COMPANY. It is unlawful to copy or reproduce all or any part thereof, whether for personal use or resale, without the prior, written permission of RAND MCNALLY & COMPANY.



Public Works Department

FACT SHEET

Sewer & Storm Drain Group 828

Background

The City of San Diego has more than 3,000 miles of wastewater pipelines to provide wastewater services to its businesses and residences. Some pipelines are more than 100 years old, are deteriorating, and are in need of replacement, repair and upgrades. To avoid future service disruptions, such as sewer main and storm drain stoppages, the aging pipelines are being replaced. This project will replace approximately 1.71 miles of existing sewer mains that were constructed over 75 years ago and install 0.07 miles of new storm drain pipes. The new pipelines will bring the existing sewer mains and storm drains up to modern standards, accommodate community growth and reduce maintenance requirements.

Project Overview

Sewer and Storm Drain Group 828 will replace the aging and deteriorating sewer mains and install new storm drain pipes within parts of the Balboa Park Golf Course and Switzer Canyon. The construction work will take place on City right-of-way (streets) and other paved surfaces, as well as easements located in the canyon. The project will:

- Replace approximately 1.71 miles of existing 6-inch, 8-inch and 10-inch sewer mains with 8-inch, 12-inch and 15-inch pipes;
- Install approximately 0.07 miles of new 18-inch storm drain pipes;
- Abandon approximately 3,800 linear feet of existing sewer mains;
- Abandon approximately 170 linear feet of existing storm drains pipes;
- Use best management practices (BMPs) for erosion control, storm drain inlet protection and restoration of disturbed areas to their original condition;
- Resurface streets impacted by its construction activities;
- And install new curb ramps that will improve mobility access for people with physical disabilities.

Project Schedule

Completion of the project design: April 2021*

Construction: September 2021* through September 2022*

*All dates are approximate and subject to change.

Project Budget

The project's most updated planning, design, and construction budget is \$11,727,935.