

City of San Diego

De Anza Revitalization Plan – An Amendment to the Mission Bay Park Master Plan and Local Coastal Program

Ad-hoc Subcommittee Meeting No. 5 Summary

June 16, 2016

Prepared by:
PlaceWorks

I. Introduction

The City of San Diego conducted the fifth meeting of the De Anza Revitalization Plan Ad-hoc Committee on Thursday, June 16, 2016 at Mission Bay High School on Grand Avenue. The Ad-hoc Committee met from 6 to 8 p.m. The purpose of the meeting was to provide an overview of the activities conducted at the Community Workshop No.2, conduct a similar group design activity with the Ad-Hoc Committee as was done at Workshop No.2, provide an update on the program prioritization counts from the workshop and online survey results, explain the process for the future creation of design alternatives, and conduct a program prioritization dot exercise with the public. In addition to the project team and Ad-Hoc Committee members present (Addendum A), approximately 84 community members also attended the meeting.

Click the link below for the meeting agenda.

[Agenda](#)

II. Format

The meeting was facilitated by Joan Isaacson (one of the project team consultants), Randy Jackson (PlaceWorks), and Glen Schmidt (Schmidt Design Group) and called to order by the Committee Chair, Paul Robinson, at 6:00 p.m.

Joan provided an overview of the agenda and explained the next steps for developing design alternatives with the Ad-Hoc Committee. Glen and Randy then provided an overview of the activities conducted at the workshop. In particular, they presented the results and findings of the program prioritization activity including the top 5 major themes that were voted on by the public through the workshop and the online activity. Glen and Randy then discussed the major themes from the group design activity and case study survey results in detail.

The Committee then participated in the group design activity, which mirrored the design charrette conducted at Community Workshop #2 (Addendum B). The Committee was broken into three groups and given 30 minutes to finish the exercise. While the Ad-Hoc Committee conducted the design activity, the public attendees participated in a sticker prioritization activity with the remaining programs that were not in the top 5 major themes (Addendum C).

Both the Ad-Hoc Committee activity and the public dot exercise activity ended at the same time. Each of the three Ad-Hoc Committee groups then reported out and presented their design. Randy and Glen then explained the future timeline and process for development of the Revitalization Plan design alternatives in greater detail, and provided “Key Questions” and parameters for the Ad-Hoc Committee to consider when looking at the information collected thus far. The meeting concluded with a public comment period.

III. Discussion and Input

As part of the discussion on the feedback received from the Community Workshop activities, Ad-Hoc Committee meetings, and online activity, the consultant team provided an overview of the program prioritization counts and general overview of online activity responses that have been received thus far. The facilitators then explained the Design Alternative activity to the Ad-Hoc Committee and the dot activity for the public. The facilitators explained that the purpose of the exercise was to gauge what the next most important activities are to the public from the remaining programs on the list. Below is a summary of the public questions and project team comments, prior to the start of the activity:

Questions from the Public

- Where are the more specific uses, such as an arcade?
 - That level of detail will not be determined in this process.
- Why are the top 5 and the remaining programs in order?
 - The programs are in no particular order.
- Why are we doing this exercise?
 - We didn't have enough info to provide three alternatives and so the consultant team wanted to gather more feedback.
- Who is going to pay for this?
 - We will address that at a later time.
- Has everything done so far looked at the Mission Bay Park Master Plan?
 - Yes.
- Why are we considering non-/motorized water recreation?
 - Cut out non-/motorized so it is just water recreation.

Following the discussion about the design alternatives process and prioritization dot exercise, the three Ad-Hoc Committee groups presented their design alternatives. Below is a general summary of their designs:

Group #1

- Presented by Karen Zirk
- Had questions regarding wetlands, the amount of area that will become wetlands within existing Campland
- Looked at prevailing winds for water restoration (water stays in the back bay for up to 20 days)
- Car free peninsula - blew away parking because "parks are for people not cars"

Group #2

- Presented by Vicki Granowitz
- Lots of play areas, extended beach, and tent camping
- Top Golf
- Needs to incorporate all sports facilities
- Vendor opportunities

- Passive recreation consists of beach, open space, etc.
- Wanted to be able to accommodate rising sea level

Group #3

- Presented by Lisa Lind
- Expressed a balance of uses
- Had environmentally sensitive uses at the south, recreational in the middle, and economy-driving uses in the north
- Wants to incorporate channel
- Want trails and public access
- RV to tents – decrease intensity from north to south
- Want to shrink or eliminate golf

The Ad-hoc Committee finished presenting their designs and Randy followed up with closing remarks about the future process for drafting design alternatives. He also explained that a new online activity will be posted on the website, which mirrors the prioritization dot exercise for the remaining programs and alternatives that were not in the top 5. Randy and Glen went on to present key questions to the Ad-hoc Committee and Parameters for Developing Draft Alternatives.

Key Questions asked by the Project Team:

- Does the list reflect an appropriate list of uses?
- Does it include everything that needs to be on it? Are there others that should be added?
- Can we take any uses off this list that are provided elsewhere in Mission Bay?

Parameters for Developing Draft Alternatives:

- Alignment with the Mission Bay Park Master Plan Vision
- Feasibility-physical opportunities and constraints
- Guiding Principles
- Distinctly different
- Consultant team design expertise

After explaining the thinking behind key questions and parameters for future alternatives consideration, the discussion was opened to the Ad-hoc Committee for questions and input on the data that has been collected so far and how it will impact the alternatives.

Committee Questions

- Were people able to take the survey more than once or was there a way of knowing who took each survey?
 - We can look at their IP address and only counted one vote for a program if there were multiple selections of the same program, within the same survey
- How are we going to be able to address feasibility of these ideas?

- We have engineers working on the project that will address those concerns when we have developed alternatives

Comments

- It is easy to gain support for things online. De Anza should be for the people, and we should think about Fiesta Island when considering uses for De Anza
- There are uses on the list that may not be for De Anza
- Excellent opportunity, driving down the I-5, we need something iconic that would let people know it is there
- No matter what uses we consider we need to think about the larger context of Mission Bay
- Mission Bay is a place where people go in the water, so water is critical
- Need to provide more photos and ideas of water activities
- Rose Creek needs more room to breathe
- Neighbors surrounding Mission Bay do not have good access, it is unsafe, and needs an entrance for pedestrians and bikes off Grand.
- We need to consider the population growth as a result of the Balboa Station

Joan closed the Ad-hoc Committee comments and questions session and explained the “Next Steps” which is the timeline for the remainder of the alternatives development process. After discussion of the “Next Steps”, Paul Robinson opened the public comment period. He explained that because the meeting was ahead of schedule, speakers were allowed 3 minutes to speak. Speaker input cards from those who spoke at the meeting are included in Addendum D, Input Cards, below.

Public Comments/Questions

- Natural habitat has many uses, for example recreation and preservation (which would be a legal requirement for Kendall Frost). How will this be accommodated?
- How can we pay for this project? The schedule is wrong.
- What is the game plan for taking on alternatives to what is going on in ReWild? We need habitat retention, recreation, and economic opportunities. How will we bring two parallel processes together?
- Where can I get the Mission Bay Park Master Plan?
 - Available online.

Comment

- There are no camping opportunities in San Diego, but Campland provides many opportunities. There are too many “cants” in the world.
- Waterfront is where the money is. That is where memories are worth 2.5 million a year
- Everyone wants the prime waterfront property. Campland has been a great tenant.
- There are problems with Top Golf including late night lights and noise. The existing golf course would lose 500k annually. The golf course should not be

changed because it would be too expensive and we should have someone else come in and pay for renovations.

- We could have been planning this project for 4 years. Boat ramp will be eliminated because it takes up swim and park space. A lot of pedestrian and bicycle facilities will be coming in, thus, there needs to be village style amenities. Also an aquatic center and swimming facility on vacation island.
- “Campland Cares” program for at risk youth, serves as a drop-in center and provides food. Also lets kids in program use Campland for a night.
- Mission Bay Park Master Plan water quality + environment = recreation and environment. Standards to protect our health are not being met and no planning will solve all the water quality issues.
- Dunes used to be main habitat at De Anza. They are fun to visit, good for restoration. Should also consider channels that run north-south instead of east-west. Other desires include ponds in golf course should clean water, consider mini golf, and include a hostel.
- Most native habitat around De Anza is now deep water (from 1,500 acres to 40 acres of coastal salt marsh). ReWild should be incorporated into this plan.
- Enhance water quality in Mission Bay by bringing the creek through the Golf and ball fields. Also want skate park, off-leash dog area, and new childrens pool.
- Boat and Ski Club offers clubs, non-profits that cannot compete with SeaWorld at South Bay. Wants a community multi-use facility.
- Campland is like Disneyland in San Diego.
- Pacific Beach project follows the states land trust, it is able to gain money and is going to start next week.
- Top priority is safety and improving water quality/uses.
- Timing for on leash use

Joan closed out the public comment period at 8:00 p.m. and reminded the meeting attendees that the prioritization dot activity will be online for a week.

Addendum A

Project Team Members in Attendance

PlaceWorks – Lead Consultant

Randy Jackson
Scott Ashlock
Michael Paul
Marc-Thomas Cordova

Katz & Associates

Joan Isaacson
Emily Wolfsohn

Schmidt Design Group

Glen Schmidt

City Staff

Robin Shifflet

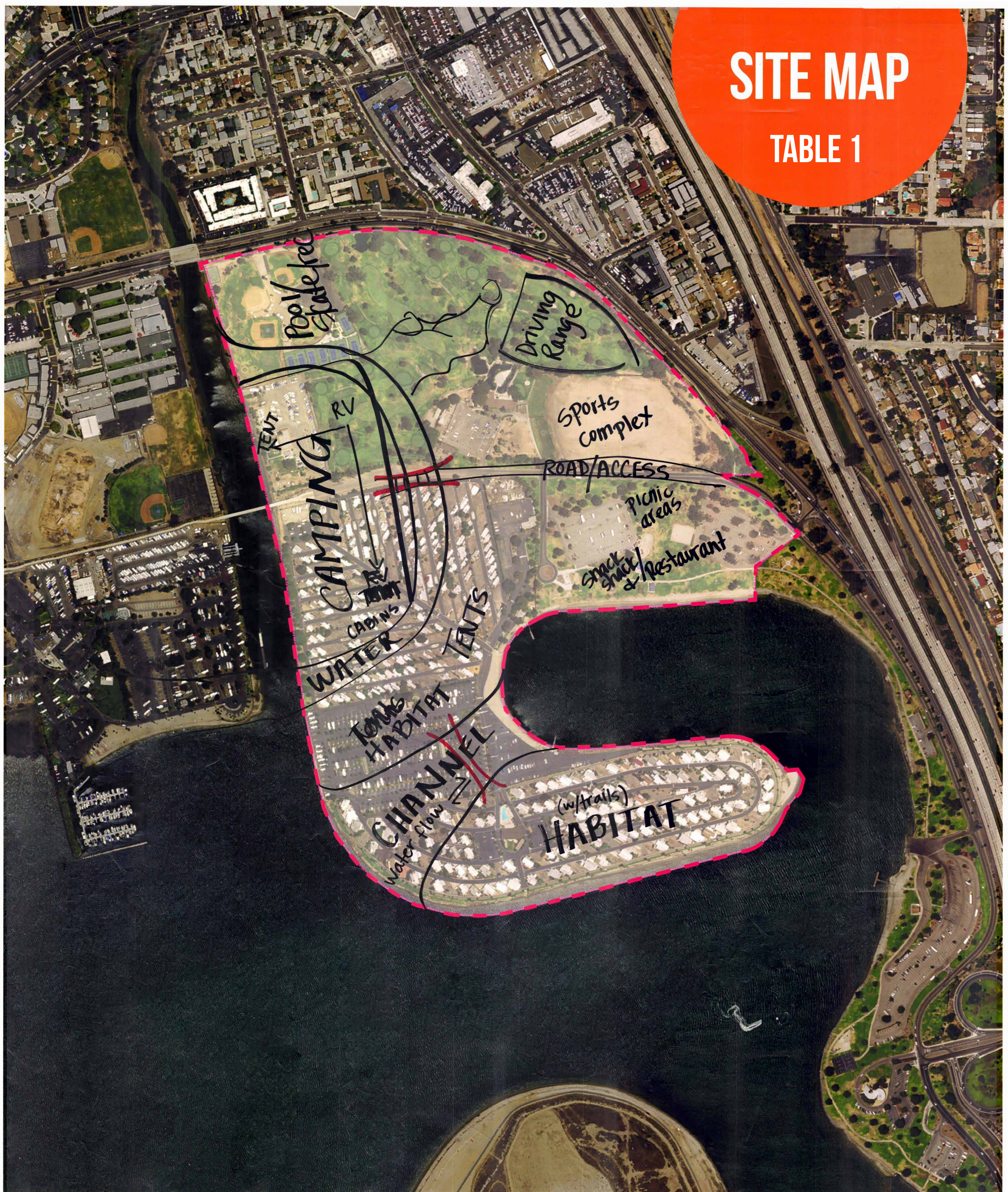
Subcommittee Members in Attendance

| | |
|------------------|--------------------------------------------------|
| Chris Olson | Pacific Beach Planning Group |
| Cindy Hedgecock | Mission Bay Park Committee |
| Darlene Walter | Mission Bay Park Committee |
| Jim Greene | Mission Bay Park Committee |
| Karin Zirk | Rose Creek Watershed Alliance |
| Lisa Lind | American Planning Association, San Diego Section |
| Namara Mercer | Mission Bay Lessees Association |
| Paul Robinson | Mission Bay Park Committee |
| Rebecca Schwartz | San Diego Audubon |
| Vicki Granowitz | Park and Recreation Board |

Addendum B
Ad-Hoc Committee Designs

SITE MAP

TABLE 1



SITE MAP

TABLE 2



SITE MAP

TABLE 3



Addendum C
Program Prioritization Activity

Potential Programming Uses/Amenities List

Highest Priorities

Expand and restore native habitat

Golf course

Guest Housing: (RV camping, overnight cabins or similar, low scale hotel/eco-lodge/conference center)

Restaurant

Safely accommodate walking, running and bicycling activities

| Other | Counts from Ad-Hoc Meeting #5 |
|---------------------------------------------------------------------------|-------------------------------|
| •Passive picnicking and recreation open space | 24 |
| •Ecological visitor center with community meeting rooms | 23 |
| •Large adventure play area for children (and adults) | 17 |
| •Off leash dog park | 8 |
| •Community garden | 7 |
| •Sports fields | 12 |
| •Sandy beaches / swimming in bay | 31 |
| •Grass or sand volleyball | 7 |
| •Games such as bocce / horseshoes | 8 |
| •Promenade | 6 |
| •Accommodate non-motorized water recreation* | 20 |
| •Skateboard park | 6 |
| •Facilities to accommodate fishing | 4 |
| •Facilities to promote Ecotourism | 13 |
| •Day use RV parking | 6 |
| •Boat ramp and trailer parking | 11 |
| •Performance venue or amphitheater | 13 |
| •Tennis facility | 20 |
| •Vendor leasing for creative activities such as climbing or creative play | 6 |
| •Food vendor(s) | 2 |
| •Retail concessions (Snacks / convenience) vendor(s) | 4 |
| •Boat slips | 28 |
| •Public competitive size swimming pool/aquatic center | 21 |
| • Non-motorized water recreation rentals* | 22 |

*The term "Non-motorized" was removed due to a request made during the Ad-Hoc meeting (#5) to allow for the row to indicate general water uses

Addendum D

Input Cards



DE ANZA REVITALIZATION PLAN

Input Card

Date: 6/16/16
Name: Isabelle Kay
Organization/Affiliation: Academic Coordinator and manager, UC San Diego Natural Reserve System
Email Address: ikaya@ucsd.edu
Would you like to receive project updates? YES NO

General Comments:

I strongly suggest that the city integrate this project with a revitalization of the entire community — wherein the adjacent neighborhood would be integrated with pedestrian and bicycle routes that are safe and appealing. The businesses there could be supported to provide ecotourism businesses — renting kayaks, binoculars, purchasing recreation gear, offering habitat tours, etc. Then there wouldn't be a need to use precious tidelands and bayfront for commercial uses that don't need to be adjacent. Could also accommodate a skate park, tennis courts, boat storage, My votes for water recreation and water recreation rentals were both for non-motorized modes.

Missing from uses on the list — that were not available for votes with red dots: ① scientific research and marine sciences education ~~and~~ (where the information that would be shared with the public would be generated) ② Tent camping ③ passive recreation in natural open space (as opposed to "recreation open space" which could be what we have already in the form of lawns & artificial beaches.

"Balance" needs to apply to habitat, recreation, and commerce mission Bay-wide.



DE ANZA REVITALIZATION PLAN

Input Card

Date: 6/16/16
Name: Roy Little
Organization/Affiliation: FOMBM
Email Address: robert.little1939@sbcglobal.net
Would you like to receive project updates? YES NO

General Comments:

General interest in water purification. No discussion on what water quality improvement is needed, if any, because the monitoring is almost non-existent. If water quality improvement is needed it will require major engineering changes and/or lots of marsh.

This issue and flood control/Sea Level Rise will define much of the design, and these topics are not given any visibility in public desires/discussions.

A basic issue is that Rose Creek is excluded from De Anza Revitalization Plan.



DE ANZA REVITALIZATION PLAN

Input Card

Date: 6-16-16

Name: Stephanie Gabriel

Organization/Affiliation: Holistic Coastal Community Center

Email Address: Sgab86@hotmail.com

Would you like to receive project updates? YES NO

General Comments:

I would like to see a community center or something related to an Ecological Center community. The community center can include a Community garden, activities for children and our senior community. The community center will host recreation activities, aquatics center, and bike, kayak rentals. We would focus on teaching people to care for our land, public awareness ~~and~~ on eating better, senior yoga classes. Plenty of recreational activities for all and especially focused on our community.



DE ANZA REVITALIZATION PLAN

Input Card

Date: 6/16/16

Name: VERONICA Cruz

Organization/Affiliation: Holistic Coastal Community

Email Address: bresthecruz@gmail.com

Would you like to receive project updates? YES NO

General Comments:

I'd really like to see a place where the Community can enjoy the Cove. creating a safe environment for children & seniors! An aquatic center, a community garden, classes for people to take to learn outdoor activities. A place where children can grow building on their self-esteem & confidence. I'd like to see the community unite to take care of environment by offering a center to provide this information.



DE ANZA REVITALIZATION PLAN

Input Card

Date: 6/16/16

Name: Amber Russell

Organization/Affiliation: Holistic Coastal Community

Email Address: breathecleanseal@gmail.com

Would you like to receive project updates? YES NO

General Comments:

I would really like to see a place where the community can come and enjoy the cove. To create a safe place for children and all the way to senior communities. I would like to see food, aquatic center, community garden, bike/kayak rentals, 'classes for people' to take to learn outdoor activities as well as a place they can learn and grow as individuals. Many families are under educated on how their decision affect the environment and a center that can provide information to enhance human behaviors to encourage good behavior.

DE ANZA REVITALIZATION AD HOC MEETING [June 16, 2016]

Public Comment submitted by Rod Meade: 1221 Torrey Pines Road La Jolla CA 92037

THANK YOU FOR THE OPPORTUNITY TO ADDRESS YOU AND FOR CONSIDERING THE WRITTEN COMMENTS THAT STAFF FORWARDED TO YOU. MISSION BAY PARK IS RESULT OF EXTRAORDINARY VISION – WE ARE FORTUNATE TO BE ABLE TO ENJOY THIS UNIQUE PUBLIC RECREATIONAL RESOURCE, SO, THANK YOU FOR YOUR EFFORTS. I THINK WE ALL UNDERSTAND THAT.

TODAY I WANT TO FOCUS ON A SINGLE QUESTION:

HOW WILL REVITALIZATION PLANNING AND PLANNING FOR THE REWILD AREA BE COORDINATED IN A WAY THAT WILL LEAD TO ACHIEVABLE, SUSTAINABLE AND DEFENSIBLE SOLUTIONS?

I AM, ADMITTEDLY, COMING LATE TO THE REVITALIZATION PROCESS. AND, EVEN THOUGH I REVIEWED YOUR “EXISTING CONDITIONS WORKBOOK” AND OTHER BACKGROUND DOCUMENTS, I STILL DON’T THINK I UNDERSTAND YOUR OVERALL APPROACH TO PLANNING FOR THE COMBINED REVITALIZATION AND REWILD AREAS. I KNOW IT CAN BE DIFFICULT TO SPELL OUT IN WRITTEN MATERIALS WHAT YOU INTEND TO ACCOMPLISH AND HOW. BUT IT IMPORTANT THAT YOU SUCCEED IN DOING JUST THAT.

BASED ON MY 4 DECADES EXPERIENCE WITH LARGE-SCALE PUBLIC AND PRIVATE PROJECTS, INSIDE AND OUTSIDE THE COASTAL ZONE, I THINK THE REVITALIZATION PROCESS NEEDS TO BETTER EXPLAIN HOW THESE 2 IMPORTANT PLANNING EFFORTS WILL BE MANAGED TO ADDRESS PUBLIC RECREATION NEEDS IN A WAY THAT ALSO ADDRESSES STATE/FEDERAL REGULATORY REALITIES RELATING TO RESOLVING PUBLIC ACCESS/USE WITH HABITAT PROTECTION AND CLIMATE CHANGE. IF SEA LEVEL RISES 3 TO 5 FT OVER THE NEXT 35 YEARS AND WATER FOR IRRIGATION AND RECREATIONAL USE IS INCREASINGLY LIMITED, HOW WILL THESE REALITIES AFFECT THE AVAILABILITY OF SUSTAINABLE PROJECT ALTERNATIVES?

REWILD AND REVITALIZATION ARE INTRICATELY WOVEN TOGETHER BY SITE AND SITUATION FACTORS . *i.e.*, WHAT YOU DECIDE TO DO IN THE DE ANZA SSA WILL AFFECT THE CHOICE OF RESTORATION ALTERNATIVES AND FUTURE OUTCOMES IN THE REWILD AREA.

THUS, MY REQUEST IS THAT MORE CLARITY BE PROVIDED AS TO OVERALL PROJECT PURPOSES AND GOALS, AND HOW THE TIMING/SEQUENCING OF WHAT NOW APPEARS TO BE “PARALLEL” REVITALIZATION AND REWILD PLANNING PROCESSES WILL CONVERGE CONSTRUCTIVELY AT A LOGICAL AND TIMELY JUNCTURE TO ENABLE AN INTEGRATED, DEFENSIBLE RESOLUTION OF HABITAT/WATER QUALITY AND RECREATION/VISITOR-SERVING USE GOALS.

AS YOU KNOW, MY WRITTEN COMMENTS EXPLORE ADDITIONAL QUESTIONS AND THEY STILL STAND.

THANK YOU AGAIN FOR YOUR ATTENTION.



DE ANZA
Revitalization Plan



DE ANZA REVITALIZATION PLAN

Input Card

Date: 6/16/16

Name: Carolyn Lieberman

Organization/Affiliation: US Fish & Wildlife Service

Email Address: carolyn-lieberman@fws.gov

Would you like to receive project updates? YES NO

General Comments:

~~_____~~

The DeAnza Revitalization Plan should incorporate the habitat restoration areas identified by the Rewild Project into the Alternatives for the DeAnza Revitalization Plan.



DE ANZA REVITALIZATION PLAN

Input Card

Date: 6-16-16

Name: Robert Forshaw

Organization/Affiliation: Friends of Campland

Email Address:

Would you like to receive project updates? YES NO

General Comments:

leave Campland alone!

De Anza is wide open for developing
Campland is a safe camping spot
on Mission Bay.



DE ANZA REVITALIZATION PLAN

Input Card

Date: 6/16/16
 Name: Terri L. Campbell
 Organization/Affiliation:
 Email Address: AZTLC @ yahoo.com
 Would you like to receive project updates? YES NO

General Comments:

The Revitalization plan has a moral / social / fiscal / environmental responsibility to keep RV camping with Beach Access on Mission Bay

We have four generations in our family alone. We have a responsibility to allow future generations access to family friendly, safe, beach access camping.

Campland is our neighbor we live right by there we share Campland with visitors locally, statewide, national, international visitors. They contribute their facility for numerous fund raising events

- Crew Classic
- SAN DIEGO Parrot Head Club
- MADD
- CSA

PLEASE Keep Campland in its entirety.



DE ANZA REVITALIZATION PLAN

Input Card

Date: JUNE 16, 2016
Name: RUSSELL D MOORE
Organization/Affiliation: San Diego Crew Classic
Email Address: RMOORE7@SAN.DZ.COM
Would you like to receive project updates? YES NO

General Comments:

I have been living and working on Mission Bay since 1976. I have seen first-hand the changing stress that Mission Bay Park, its Rangers and groundskeeper face from increasing demand on Mission Bay's resources.

Despite this increasing pressure, Campland continues to provide a safe and well managed facility which serves 100,000's of residents and visitors. The staff, the rangers and the venue all contribute to create a family-friendly, safe and relaxing spot in our beautiful City.

The San Diego Crew Classic is a 43 year annual tradition in Mission Bay. Each year 4,000 rowers and 6,000 spectators come to this event. Campland has hosted the operations base to this event for nearly a decade. Their donation of parking, launch ramp and dock space are a critical component of this event. Campland donates these resources for 3 weeks prior and week following our annual event.

Please ensure that the De Anza Revitalization Plan provides for Campland's continued support of San Diegans, its camping visitors and the San Diego Crew Classic.



DE ANZA REVITALIZATION PLAN

Input Card

Date: June 16, 2016

Name: Stephen Roberts

Organization/Affiliation: _____

Email Address: handyego@yahoo.com

Would you like to receive project updates? YES NO

General Comments:

I am supporting the Campand Plan to keep the Family
Style campground in this area. It is a proven attraction that
brings families from ALL over to Pacific Beach/Mission Bay area
that is FUN, SAFE and AFFORDABLE!



DE ANZA REVITALIZATION PLAN

Input Card

Date: 6-16-14

Name: Janessa Finley

Organization/Affiliation:

Email Address:

Would you like to receive project updates? YES NO

General Comments:

I don't agree with turning Campland into a wetland bird sanctuary for the following reasons:

- 1.) your taking away jobs.
- 2.) your inadvertently increasing bird population that will create issues in the area such as smell & devaluing houses in area. No different than the seals in La Jolla.
- 3.) marathons run across Jester Island which is across from camp land which is going to impact runners from wanting to run because of having to run thru the smell. People travel from all over to run these events so its an economy boost.

instead of costing tax payers more money for something that doesn't generate profit why not take the money & make something that is good better? why not make campland better & increase the economy & create more jobs?



DE ANZA REVITALIZATION PLAN

Input Card

Date: 6/16/16

Name: Roy Little

Organization/Affiliation: FOMB M

Email Address: robot-little1939@sbcglobal.net

Would you like to receive project updates? YES NO

General Comments:

MB "charter" says "balance" among commerce, recreation & environment. There is no definition of "balance" and for the last >50 years "environment" has been seriously neglected. There is no requirement that each "project" inside MB Park has to be "balanced", so why is such a requirement being applied to this De Anza project? Certainly such a requirement has not been applied to previous "projects". Is this a precedent that will be applied to all future "projects"?



DE ANZA REVITALIZATION PLAN

Input Card

Date:

6/16/16

Name:

Mark Deitch

Organization/Affiliation:

Email Address:

858 551 2318

Would you like to receive project updates? YES NO

General Comments:

Use channels to separate distinct land uses; the channels will enhance water quality.

Make the potential amphitheatre similar to San Diego Pops (orchestra)

Relocate golf to Fiesta Island (model of Coronado Golf Course, which is along Etovrietta Bay.

Create separate financing mechanisms for each land use, and the initial infrastructure.



DE ANZA REVITALIZATION PLAN

Input Card

Date: 06-16-16

Name: Jean LEE GAUTHIER

Organization/Affiliation: _____

Email Address: JEAN.GAUTHIER1944@ATT.NET

Would you like to receive project updates? YES NO

General Comments:

In regards to the new plan - R.V. ocean view family camping.

I have been a marina + tenant along with camping tenant. I feel it would be an injustice to all the families who have been coming to Camp Land and for future families. I myself have been coming to Camp Land for over 25 years.



DE ANZA
Revitalization Plan



DE ANZA REVITALIZATION PLAN

Input Card

Date: 16 JUN 16

Name: GEORGE HEATHERINGTON

Organization/Affiliation: ECO SAN DIEGO, PROPERTY OWNER, 70+ YEAR RESIDENT

Email Address: geoheatherington@gmail.com

Would you like to receive project updates? YES NO

General Comments:

THIS PROCESS HAS BEEN ORCHESTRATED FOR A PRE DETERMINED OUTCOME.
PUBLIC COMMENT HAS BEEN IGNORED.
PRESENTERS TODAY DISINGENUOUSLY ANNOUNCE "... what you want."
THROUGH ATTENDANCE AT EVERY ONE OF THESE MEETINGS OFFERED
TO THE PUBLIC I OBSERVED OVERWHELMING INTEREST FROM THE PUBLIC FOR
WILD LAND RESTORATION AND PUBLIC PARKLAND. TODAY WE ARE TOLD THAT
MOTORHOMES ARE "OUR" "HIGHEST PRIORITY"



DE ANZA REVITALIZATION PLAN

Input Card

Date: June 16, 2016

Name: Dora R Sanger

Organization/Affiliation: _____

Email Address: DORRANN SANGER @ yahoo.com

Would you like to receive project updates? YES NO

General Comments:

Please include RV camping on the ocean / bay that is for families - My family has been camping for over 20 years at Compland. It is important for a major city to have this type of camping



DE ANZA REVITALIZATION PLAN

Input Card

Date: 6/14/16

Name: Gayle Gordon

Organization/Affiliation: Friends of MGC and P.B. Tennis Club

Email Address: gayle@gordonandsmith.com

Would you like to receive project updates? YES NO

General Comments:

1. First, I am encouraged that you are listening to the community.
2. Second, since San Diego is a city noted for its achievement of supporting fitness I have deep reservations that you should eliminate the base ball fields, tennis courts and golf course.
3. I think that there should be a real effort to combine ecology goals with the other priorities, but I feel that it should not have a higher priority than the people needs.
4. I have been on the East Coast and seen boardwalks. I think a cement walkway would be safer and more versatile for a variety of walking, biking, skating etc.
5. I do think the need to increase the quality of the water is very important.
6. Parking needs to be accessible for young families to actually get to the areas of recreation.



DE ANZA REVITALIZATION PLAN

Input Card

Date:

6/16/16

Name:

Sean S. Schwab

Organization/Affiliation:

Friends of Campland

Email Address:

Rocksean@Azn.com

Would you like to receive project updates? YES NO

General Comments:

Overnight, waterfront, family friendly
affordable, safe camping for
RVS!

Thank you, you guys are doing
a great job!



DE ANZA REVITALIZATION PLAN

Input Card

Date: 6/16/16

Name: Diane Riehl

Organization/Affiliation:

Email Address: driehl@san.ra.com

Would you like to receive project updates? YES NO

General Comments:

Commercial driving range is not in keeping with environmental goals - keep golf as is with added

Consider the cost of these items and how much use they will get. Mission Bay is a great park where people love to picnic, walk, jog. I don't know that a lot of commercial or RV, tent, camping is best use of land since Camp Land is there - I also am concerned that these commercial ideas will not raise money and will also add to cost of to the city -



DE ANZA REVITALIZATION PLAN

Input Card

Date: 6/16/16

Name: JIM ELKO

Organization/Affiliation: _____

Email Address: _____

Would you like to receive project updates? YES NO

General Comments:

If we open a ^{new} channel will it allow for cleaner water for children to play in?

How large does the channel need to be for it to effectively flush the inner "boot"?



#4

DE ANZA REVITALIZATION PLAN

Input Card

Date: 6-16-16

Name: GLORIA & STAVE HENSON

Organization/Affiliation: M.P. RESIDENT

Email Address: GLOHNSON@SAN.RR.COM

Would you like to receive project updates? YES NO

General Comments:

THE DEANZA COVE AREA IS A FABULOUS CITY RECREATION RESOURCE. THE CURRENT FEATURES AVAILABLE ARE POPULAR & SHOULD STAY. THE GOLF COURSE SHOULD STAY!

THE MULTIPLE PHOTOS OF "NATURAL WALK-WAYS" WITH EVERYONE SHOWING REAL WOOD PLANKS. THAT IS VERY UNCOMFORTABLE USE FOR ALL WHEELCHAIRS. YOU CAN WITH GREAT DIFFICULTY PUSH A WHEELCHAIR ON WOOD PLANKS BUT IT IS VERY BUMPLY FOR CHAIR OCCUPANT. ALSO THE BEACH IS VERY POPULAR FOR ROLLER BLADES, BIKES, SKATEBOARDS & THEY CAN NOT USE WOOD PLANK WALK-WAYS.

ALTERNATE TERRAINE FEATURES ARE A FUN CONCEPT BUT ABILITY TO USE THE SPACE FOR THE MAJORITY OF NEEDS MEANS ABILITY FOR HUNDREDS OF PICKNICKERS WITH BLANKET, WHEELED TRAVELERS, ETC.

P.S. A CAMEL IS A 'RACE HORSE' DESIGNED BY COMMITTEE.



DE ANZA
Revitalization Plan



DE ANZA REVITALIZATION PLAN

Input Card

Date: 6-16-16

Name: NANCY CLAIN

Organization/Affiliation: SDPHC

Email Address: _____

Would you like to receive project updates? YES NO

General Comments:

Would like family R.V. camping - Ocean
or Bay side



DE ANZA REVITALIZATION PLAN

Input Card

Date: 6/16/16
Name: Ann Parode Dynes
Organization/Affiliation: Municipal Golf (Course) Committee
Email Address: anndynes@ucsd.edu
Would you like to receive project updates? YES NO

General Comments:

1- A driving range is a poor use of such precious land. A revitalized golf course (more trees, marshland perimeters, etc.) would meet all the objectives of the Mission Bay plan - environmentally sound (esp. for birds), recreational and commercial services. I want to help MBGC become certified by an organization such as Audubon International; it would actually be respected for its role in the new De Anza Cove.

2- I am concerned about some uses, such as an amphitheatre, which would be a magnet for cars and its associated parking. Uses which call for less cars per use, like picnicking seems much wiser.



DE ANZA REVITALIZATION PLAN

Input Card

Date: 6/16/16

Name: Amanda Witzens

Organization/Affiliation: N/A

Email Address: Witzens@gmail.com

Would you like to receive project updates? YES NO

General Comments:

First, I must say, there is nothing else like Campland. I was born in San Diego and have camped there most of my life. Campland is family friendly and very unique. People travel a long way for that experience and many of us who are local have 'stay-cations' frequently. We also hold charity events there and enjoy local music talents outside by the water, while watching SealWorld fireworks, during the summer. There are many water and land activities for groups and families. There is nothing that can compare with the experience of what we have in Campland. A safe zone for our kids/family behind a gated community on the water of our beautiful bay. There are many public playgrounds around the bay but nothing like this that is safe and protected behind gates, in a private campground. Please don't take away this unique facility. Upgrade the current area to make it more appealing but leave the land the way it is and let the locals/campers keep enjoying it. It has something for every camper!



DE ANZA REVITALIZATION PLAN

Input Card

Date: _____

Name: _____

Organization/Affiliation: _____

Email Address: _____

Would you like to receive project updates? YES NO

General Comments:

(200y)
Long-term flood control combined with Sea Level Rise should be a basic requirement for this area. MBHS will be flooded by 100y flood + SLR, so have to build up the ~~east side~~ west side of Rose Creek, let the flood spill into the retention basin/recreation area/golf course. This is a basic part of any solution.

DE ANZA REVITALIZATION AD HOC MEETING [June 16, 2016]

Public Comment submitted by Rod Meade: 1221 Torrey Pines Road La Jolla CA 92037

rodmeade@gmail.com 858 531 1705

THANK YOU FOR THE OPPORTUNITY TO ADDRESS YOU AND FOR CONSIDERING THE WRITTEN COMMENTS THAT STAFF FORWARDED TO YOU. MISSION BAY PARK IS RESULT OF EXTRAORDINARY VISION – WE ARE FORTUNATE TO BE ABLE TO ENJOY THIS UNIQUE PUBLIC RECREATIONAL RESOURCE, SO, THANK YOU FOR YOUR EFFORTS. I THINK WE ALL UNDERSTAND THAT.

TODAY I WANT TO FOCUS ON A SINGLE QUESTION:

HOW WILL REVITALIZATION PLANNING AND PLANNING FOR THE REWILD AREA BE COORDINATED IN A WAY THAT WILL LEAD TO ACHIEVABLE, SUSTAINABLE AND DEFENSIBLE SOLUTIONS?

I AM, ADMITTEDLY, COMING LATE TO THE REVITALIZATION PROCESS. AND, EVEN THOUGH I REVIEWED YOUR "EXISTING CONDITIONS WORKBOOK" AND OTHER BACKGROUND DOCUMENTS, I STILL DON'T THINK I UNDERSTAND YOUR OVERALL APPROACH TO PLANNING FOR THE COMBINED REVITALIZATION AND REWILD AREAS. I KNOW IT CAN BE DIFFICULT TO SPELL OUT IN WRITTEN MATERIALS WHAT YOU INTEND TO ACCOMPLISH AND HOW. BUT IT IMPORTANT THAT YOU SUCCEED IN DOING JUST THAT.

BASED ON MY 4 DECADES EXPERIENCE WITH LARGE-SCALE PUBLIC AND PRIVATE PROJECTS, INSIDE AND OUTSIDE THE COASTAL ZONE, I THINK THE REVITALIZATION PROCESS NEEDS TO BETTER EXPLAIN HOW THESE 2 IMPORTANT PLANNING EFFORTS WILL BE MANAGED TO ADDRESS PUBLIC RECREATION NEEDS IN A WAY THAT ALSO ADDRESSES STATE/FEDERAL REGULATORY REALITIES RELATING TO RESOLVING PUBLIC ACCESS/USE WITH HABITAT PROTECTION AND CLIMATE CHANGE. IF SEA LEVEL RISES 3 TO 5 FT OVER THE NEXT 35 YEARS AND WATER FOR IRRIGATION AND RECREATIONAL USE IS INCREASINGLY LIMITED, HOW WILL THESE REALITIES AFFECT THE AVAILABILITY OF SUSTAINABLE PROJECT ALTERNATIVES?

REWILD AND REVITALIZATION ARE INTRICATELY WOVEN TOGETHER BY SITE AND SITUATION FACTORS . . . *i.e.*, WHAT YOU DECIDE TO DO IN THE DE ANZA SSA WILL AFFECT THE CHOICE OF RESTORATION ALTERNATIVES AND FUTURE OUTCOMES IN THE REWILD AREA.

THUS, MY REQUEST IS THAT MORE CLARITY BE PROVIDED AS TO OVERALL PROJECT PURPOSES AND GOALS, AND HOW THE TIMING/SEQUENCING OF WHAT NOW APPEARS TO BE "PARALLEL" REVITALIZATION AND REWILD PLANNING PROCESSES WILL CONVERGE CONSTRUCTIVELY AT A LOGICAL AND TIMELY JUNCTURE TO ENABLE AN INTEGRATED, DEFENSIBLE RESOLUTION OF HABITAT/WATER QUALITY AND RECREATION/VISITOR-SERVING USE GOALS.

AS YOU KNOW, MY WRITTEN COMMENTS EXPLORE ADDITIONAL QUESTIONS AND THEY STILL STAND.

THANK YOU AGAIN FOR YOUR ATTENTION.



DE ANZA REVITALIZATION PLAN

Input Card

Date: June 16, 2016
 Name: Cynthia I. Relph ALSO
 Organization/Affiliation: Resident of San Diego County, - Campland on the Bay - CAMPER
 Email Address: breph99@hotmail.com

Would you like to receive project updates? YES NO

General Comments:

1. VERY Important to keep the golf course you could change it to a nine hole regulation. Remodel the existing restaurant + possibly add some conference rooms, there could possibly be used for rentals, such as weddings etc.
2. Pool + Aquatic center, could also be used by Mission Bay High School, swimming groups.
3. The most important are Beach Front camping as the residents of San Diego have had with Campland on the Bay. This is also revenue for the city of San Diego. Most of our campers are motor homes and trailers and some tents. I'm not big on cabins, those would need cleaning when people check out. San Diego has numerous rental trailer and RV companies to rent from. Campland on the Bay is so important + has created so many memories for numerous San Diego families and tourists to spend money at restaurants + businesses here in P.B. + Mission Beach. We have so many family activities.
4. Keep the ball fields + a skate park would be nice. OUR YOUTH need activities



DE ANZA REVITALIZATION PLAN

Input Card

Date: 5/16

Name: Jim Peugh

Organization/Affiliation: as an individual

Email Address: peugh@cox.net

Would you like to receive project updates? YES NO

General Comments:

Include some dune habitat in upland areas, with dune vegetation

Channel more NS than E W, or NE to SW

Water quality bays as water features in Golf course

Small mini golf course with an environmental theme & interpretive features close to camping and recreation areas.

Disappointed that non-motorized water activity was removed.
Non-motorized would be more environmentally benign & provide for more users.
Consider a hostel as part of visitor accommodations.
They provide for a lot of people with not much land at relatively low cost. Balboa station will make it more important.



DE ANZA REVITALIZATION PLAN

Input Card

Date: _____

Name: _____

Organization/Affiliation: _____

Email Address: _____

Would you like to receive project updates? YES NO

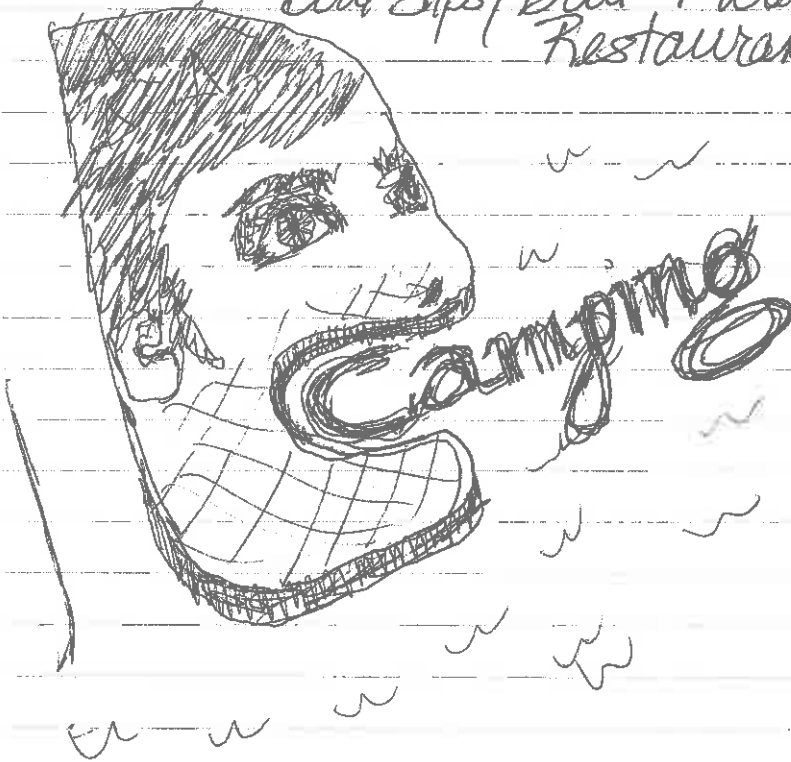
General Comments:

RV & tent camping combined with family/kids/sports oriented activity areas.

Olympic Sized Pools

Water Park

*Boat Slips / Boat & watercraft rentals / Launch
Restaurant / banquet / catering*





DE ANZA REVITALIZATION PLAN

Input Card

Date: June 15, 2016
Name: Sandy Vissman
Organization/Affiliation: USFWS
Email Address: Sandy.Vissman@fws.gov
Would you like to receive project updates? YES NO

General Comments:

My name is Sandy Vissman, and I would like to provide input regarding the need for the restoration and/or creation of wildlife habitat around Mission Bay, including De Anza Cove. The City has an opportunity to build upon ~~existing~~ potential conservation efforts at North Fiesta Island, and Kendall Frost Preserve, and potentially Campland, to create a meaningful acreage of functional wetland, salt flat, mudflat & sandbar habitat.

Only 40 acres of salt marsh remain
of the over 10,000 historical acres.

Part of the enjoyment of being near
the water is wildlife viewing. In order
to support people in a wildlife area, it
needs to be big enough.

If Mission Bay wetlands could
↓
a sig.
acreage

be restored / created, it would
allow people to really experience
an enjoyable bay experience -
with fishing, wildlife, clean
water.



DE ANZA REVITALIZATION PLAN

Input Card

Date: 6/16/2016

Name: Bill Tippets

Organization/Affiliation:

Email Address: billtippets@gmail.com

Would you like to receive project updates? YES NO

120 Acres of total land available (plus water)

General Comments:

- ① This is the only portion of Mission Bay that is logical to prohibit motorized aquatic craft. There must be a portion of MB that is motorized watercraft-free.
- ② No permanent hotels/motels/cabins in the restoration/restoration. RV facility should be buffered from the shoreline - not close (>100') from the upper shoreline. No long-term RV leases - maximum 2 week space rental (like state/faceted parks).
- ③ Please check the golf course receipt/time of use. There appears to be a vocal few who strongly advocate for golf, but that may not reflect "real" use. Consider converting this to a ^{smaller} 9-hole approach course to free up land for wetland restoration along Rose Creek (move the boat storage to south MB end and have the MBHS tennis courts made available - for a fee - to the tennis club.
- ④ Remove this portion of MB cannot be planned ~~as if it were a~~ ^{separate} ~~entity~~ from the remaining 90%+ of activities and opportunities throughout MB. The revitalization plan has to feature/highlight this area's unique historical/environmental values and opportunities.
- ⑤ Locate any "commercial" buildings within the some of the "extra" space made available from the reduced golf course. This could include ball fields/tennis/skate park/etc and a visitor center (or that could be included in the RV facility - no long or it is open to the public).
- ⑥ The risk of sea level rise (SLR) has to be fully analyzed and accommodated. The COSMOS 3.0 model (USEPA/USGS) must be used as it is the most comprehensive and reliable model tool.

Over →

⑦ The peninsula that sticks out to form ^{De Anza} Estero (one needs to be removed / lowered to become ^{clines} Sattmarck habitat and channels to help improve water quality.

⑧ The overall plan for De Anza Revitalization must clearly determine which uses are for local (CPB / La Jolla / MJB) users, regional users/needs and out-of-SD users and needs. Then, figure out how those various users/needs best fit with each other within the RZA planning area.

- Not all uses can be accommodated