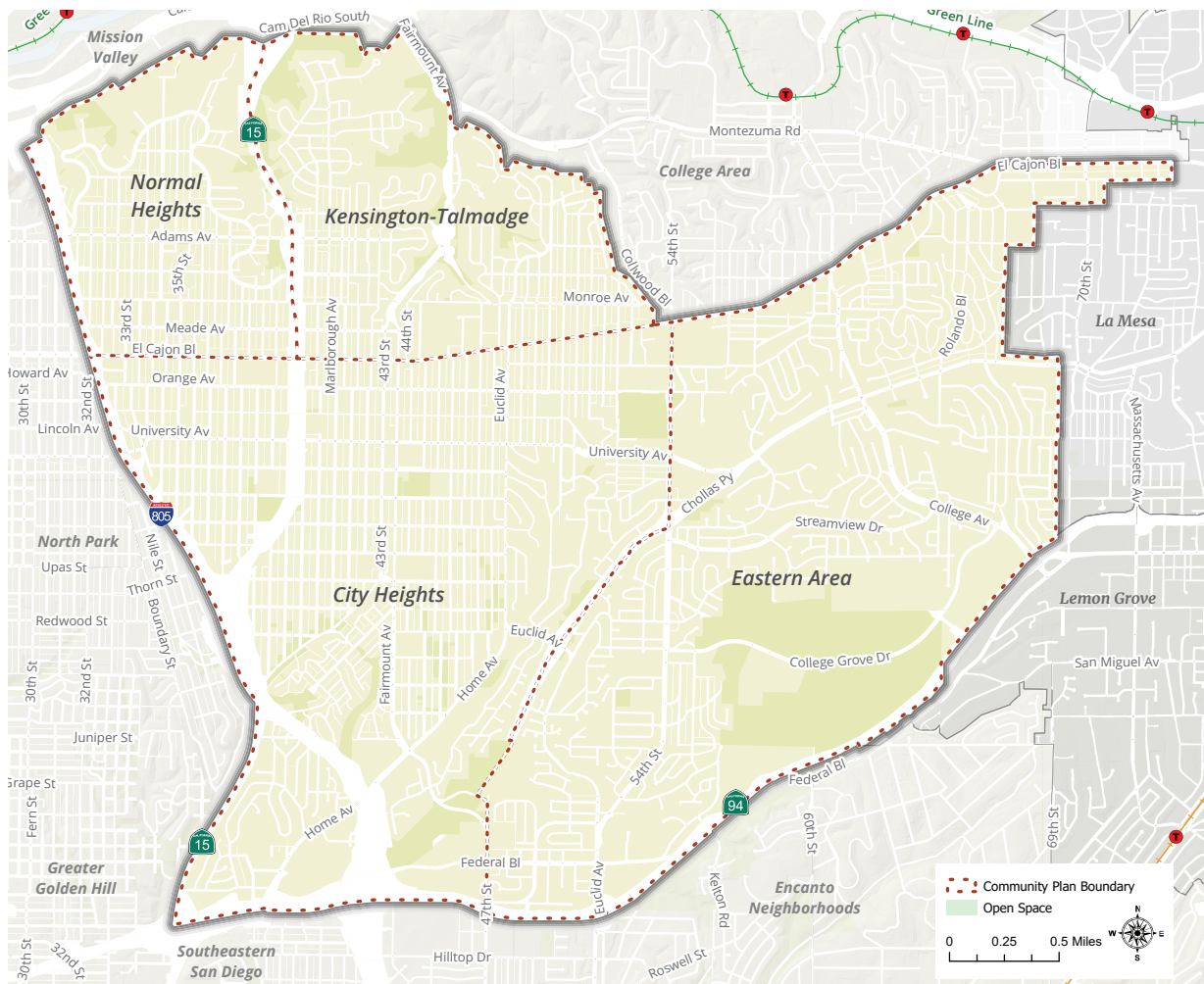


WHY IS THE CITY UPDATING THE MID-CITY COMMUNITIES PLAN?

The City of San Diego is updating the Mid-City Communities Plan for the first time in 25 years to identify opportunities for new homes, businesses and infrastructure to benefit everyone in Mid-City. The Mid-City Communities Plan will be a part of the City's General Plan - the City's guide to long-term growth - and will implement the City's Climate Action Plan. The City looks forward to hearing from community members about what the community is like today, and their vision for the future growth and investment in Mid-City.

WHAT AREAS ARE INCLUDED IN THE MID-CITY COMMUNITIES PLAN?

The Mid-City Communities Plan covers 8,052 acres and includes four communities: City Heights, Eastern Area, Kensington-Talmage and Normal Heights. The northern area of Mid-City is next to Interstate 8 and the College Area community; while the west adjoins Interstate 805, State Route 15, and the North Park and Golden Hill communities. On the east side is the City of La Mesa; and the southern portion is bounded by State Route 94 and communities of Southeastern and Encanto Neighborhoods (also referred to as Chollas Valley).



Mid-City Planning Area



FACT SHEET



WHAT IS THE TIMELINE AND FOCUS?

The update to the Mid-City Communities Plan will serve as the 30-year vision for land use, mobility, urban design, public facilities and services, natural resources, historic and cultural resources and economic development. During the plan update process, City Planning Department will consult Mid-City community members to identify and consider important questions, issues and opportunities including:



How can people of all backgrounds and incomes be able to live and work in Mid-City?



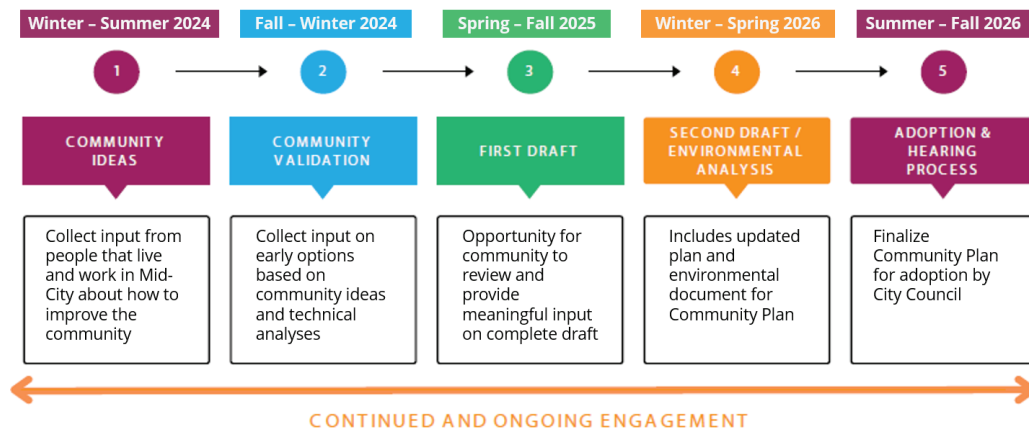
How can we make it easier for people to walk/roll, bike and use transit?



Where are the special places in Mid-City that we can celebrate and invest in?



How do we make Mid-City more adaptable, equitable and resilient?



Community Plan Update at a Glance

HOW DO I GET INVOLVED?

Visit PlanMidCity.org for updates and to sign-up for email announcements. Upcoming opportunities to get involved include:

- Participate in community conversations by attending pop-ups, meetings, events, office hours and workshops planned for winter, spring and summer of 2024.
- Explore community ideas and priorities through an online survey planned for winter of 2024.
- Apply to join the Mid-City CPU Working Group.

Questions? Email Planmidcity@sandiego.gov

Translation and Interpretation Services
 Servicios de Traducción e Interpretación
 Mga Serbisyong Pagsasalín at Pagpakahulugan
 翻译和口译服务
 Các Dịch vụ Biên dịch và Phiên dịch
 번역 및 통역 서비스



Scan for information on translation and interpretation services or visit sandiego.gov/planning/translation-services

