

Convoy Community Forum – Convoy Parking Study Next Steps

May 3, 2023

Kearny Mesa Community Plan

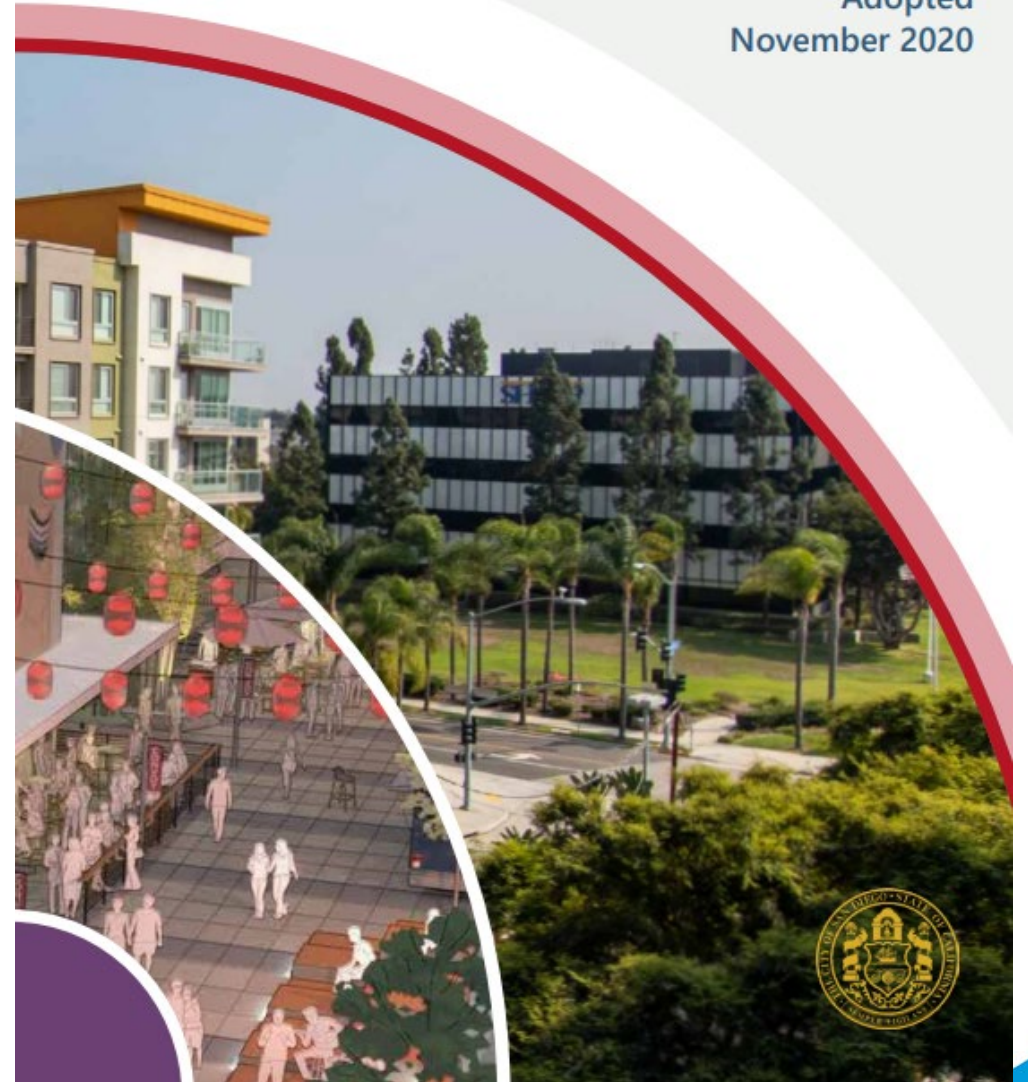
Adopted November 2020

*The future of Kearny Mesa is as a strong employment center with supportive residential uses and abundant outdoor spaces where people can connect and share ideas. This growth is taking place in an era of sustainable and healthy communities. Like much of its history – one rooted in innovation, collaboration, and investment – **Kearny Mesa is well positioned to be a model for achieving a vibrant employment community.***

Kearny Mesa Community Plan, p. 7

KEARNY MESA COMMUNITY PLAN

Adopted
November 2020



Convoy Corridor

An epicenter of commerce, cuisine, and culture, now flourishing in a mixed-use and walkable community

Kearny Mesa Community Plan, p. 18



A Vision for the Future

Convoy Street Evolution into a Mixed Use Village

- Convoy Square
 - 4888 Convoy Street
 - 531 units on Dixieline Site
- Convoy Gateway
 - 7585 & 7655 Clairemont Mesa Blvd
 - 1,622 units with 33,000 sq ft of retail

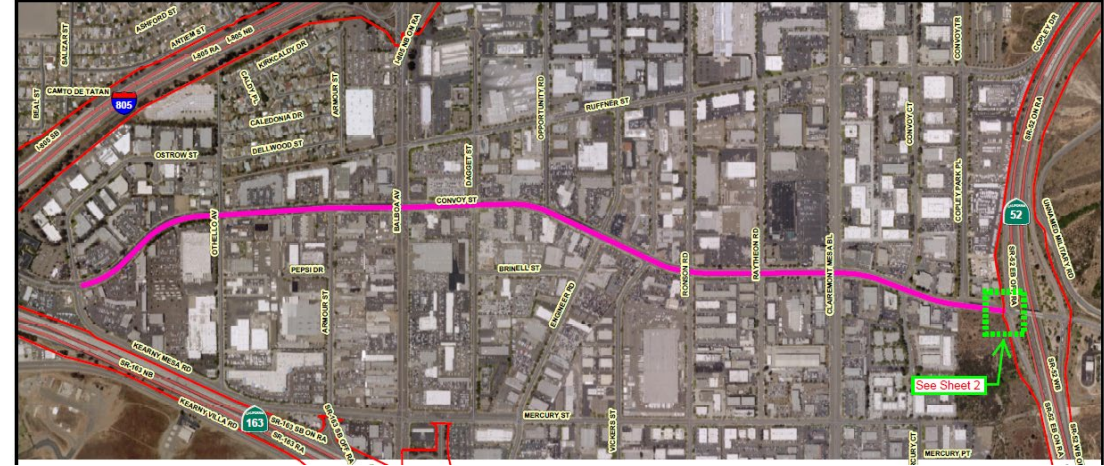


Rendering of Convoy Square

Convoy Street Infrastructure Improvements

Comprehensive Implementation

- Water pipeline project
 - AC Water and Sewer Group 1042, B-17117
- Bike network implementation per Kearny Mesa Community Plan
 - Separated Bikeway with buffers and posts
- Resurfacing 3.4 miles along Convoy Street



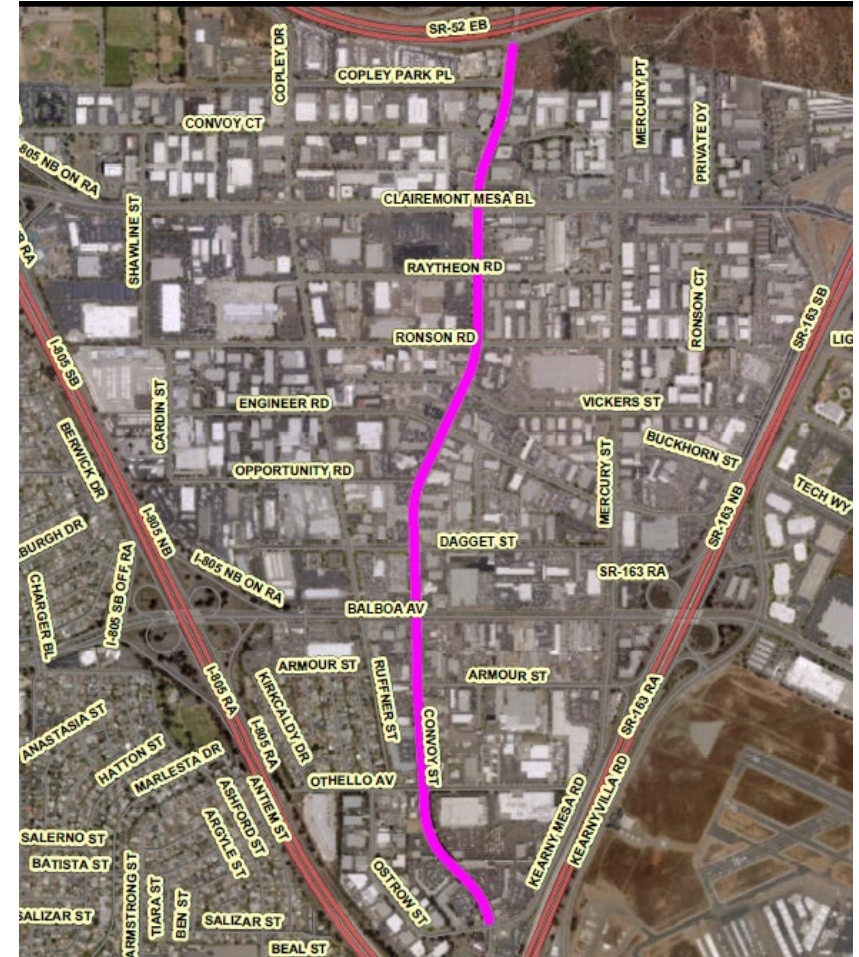
Pipeline and Resurfacing Project



Separated Bikeway

Construction Schedule

- Construction is anticipated to start June 2023 and is expected to be complete in February 2024.
- Night construction from 9 pm – 5 am (Monday – Friday).
- Construction is expected to start by SR-52 on/off ramps and move south towards Kearny Mesa Road.
- Traffic Control measures will be implemented to maintain flow of vehicular traffic and access to businesses and residences along Convoy Street
 - “No Parking” signs will be posted 72 hours in advance



Construction Schedule

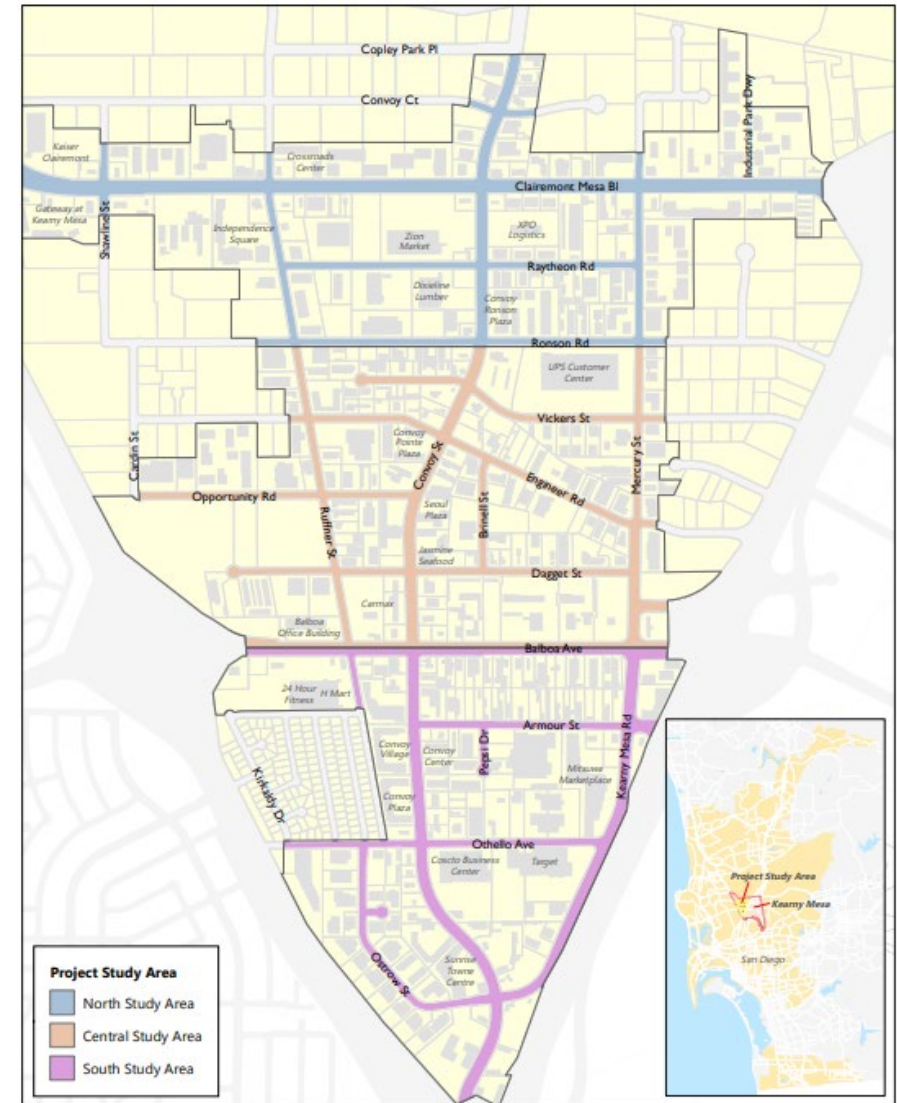
- Construction will be completed in 3 specific phases:
 - **Summer 2023:** Concrete improvements (bus pads, driveways)
 - **Summer 2023 – Winter 2023:** Paving improvements (asphalt removal, paving)
**On-street parking will be impacted at this time*
 - **Winter 2023 – Spring 2024:** Striping/signage (bikeways/signage)

For questions and feedback about the paving construction*, you can contact us at (619) 533-4207 or email engineering@sandiego.gov

**Upon distribution of the construction notices to the businesses and property owners, a resident engineer point of contact will be provided.*

Convoy Parking Study

- Evaluate parking inventory and parking impacts
- Weekday and weekend data collection
 - Parking Occupancy
 - Turnover
- Study Area
 - 55 street segments
 - 2 paid parking lots
 - 40 off-street parking lots



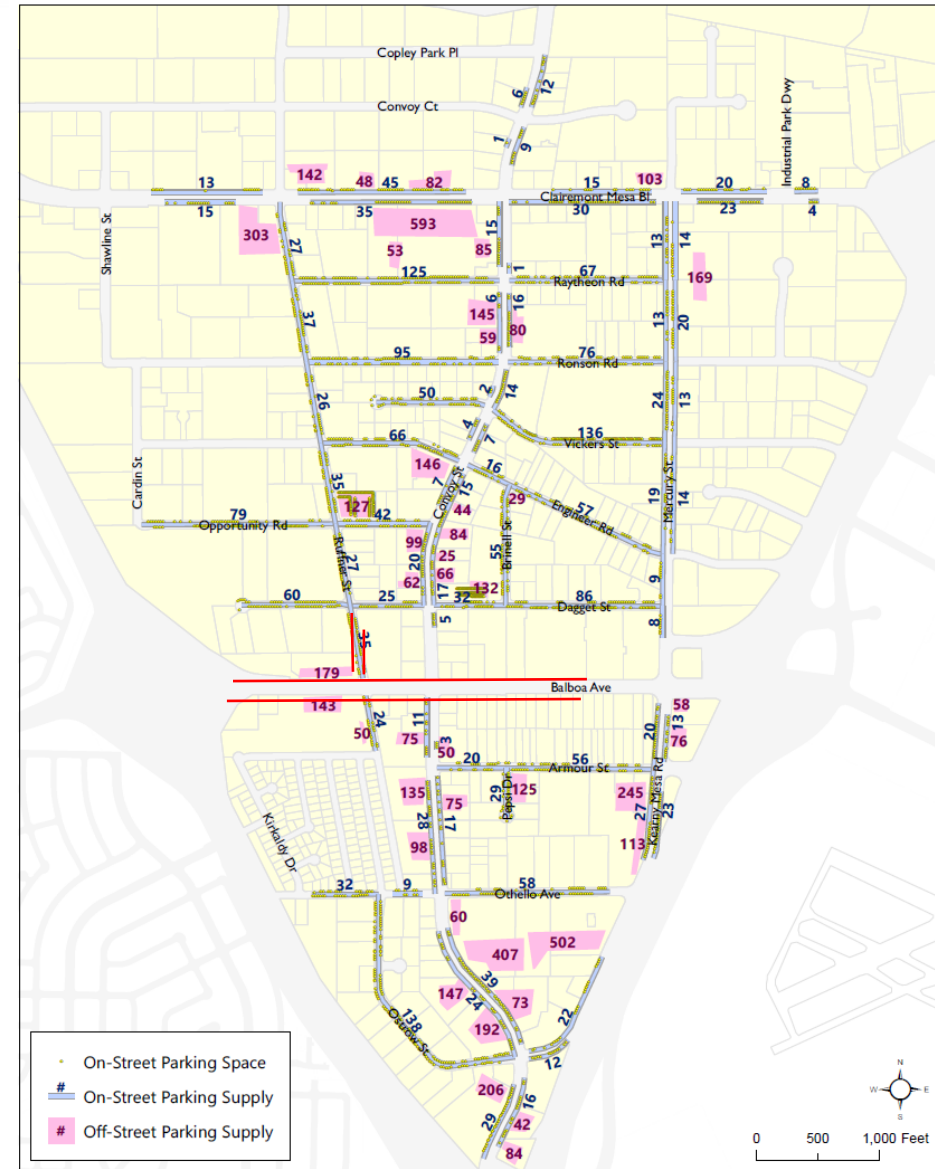
Convoy Parking Study available on the [City's Transportation website](#).

Public Parking Inventory

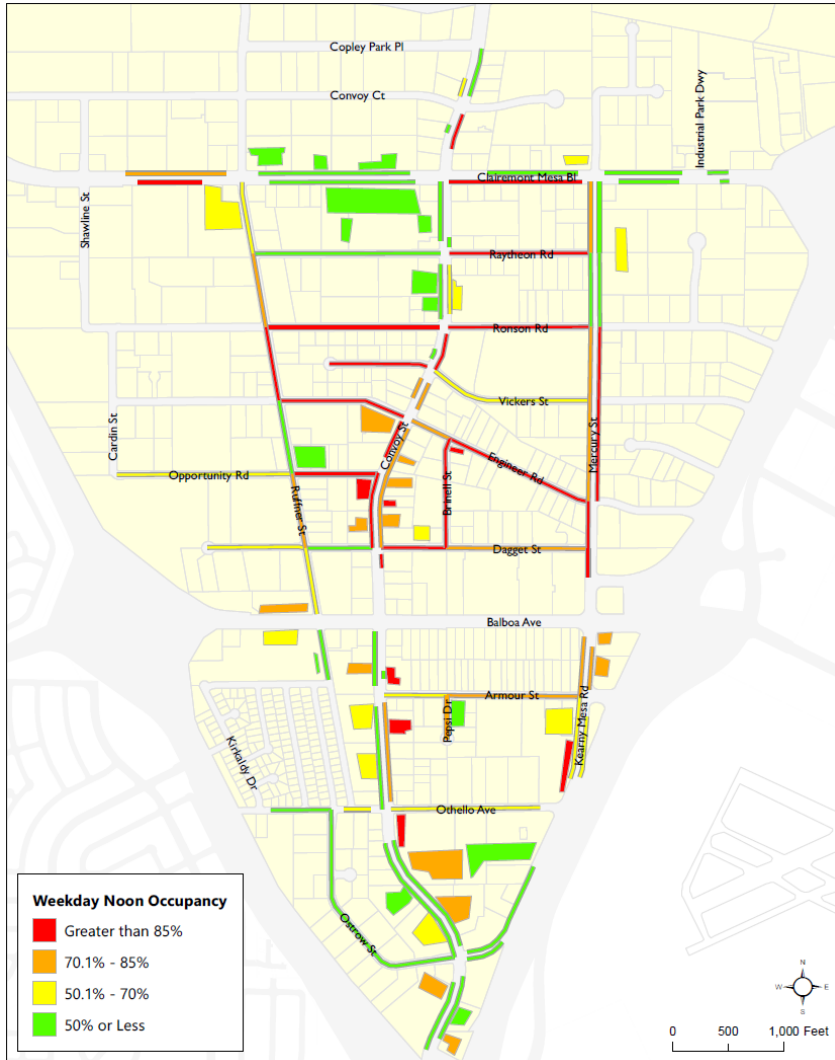
Location	North	Central	South	Total Study Area
Convoy Street	66	91	167	324
Side Street Public Parking	695	914	483	2,092
Off-Street Public Parking	n/a	259	n/a	259
Total Public Spaces	761	1,264	650	2,675

Public and Private Parking Inventory

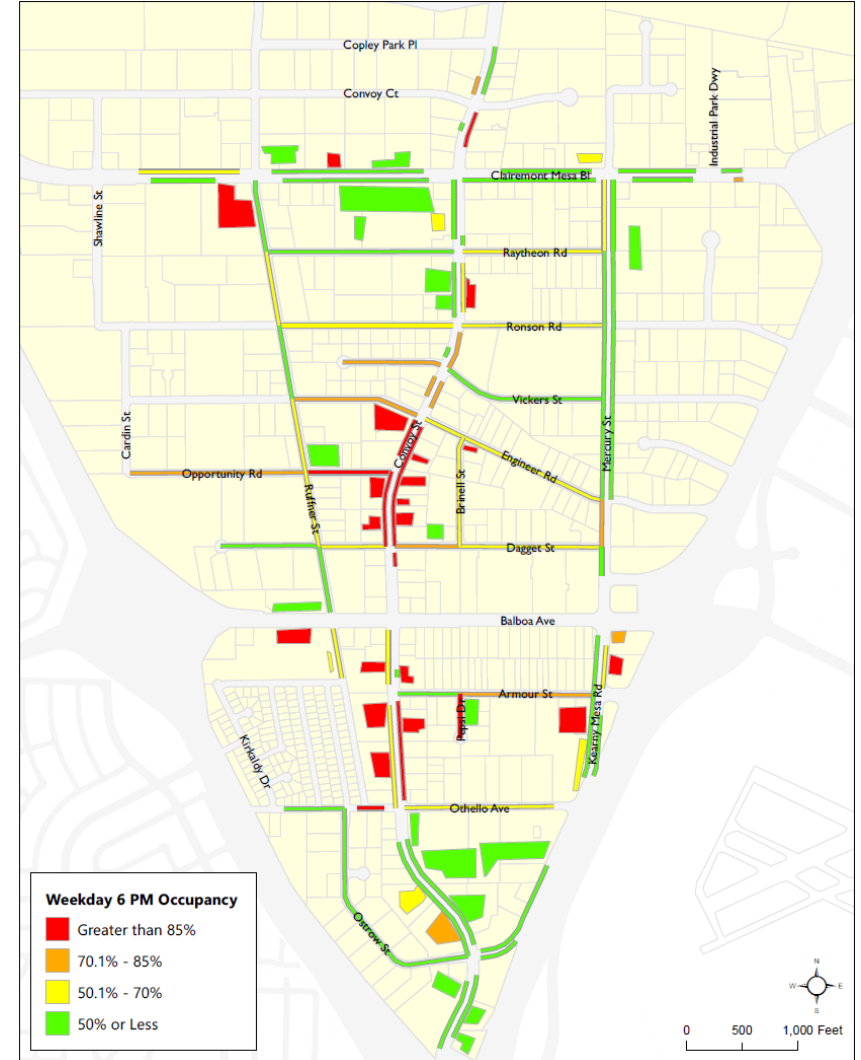
Parking Type	North	Central	South	Total Study Area
Public Parking	761	1,264	650	2,675
Private Parking	1,862	734	2,965	5,561
Total Spaces Inventoried	2,623	1,998	3,615	8,236



Parking Occupancy – Weekday (12 PM – 1 PM)

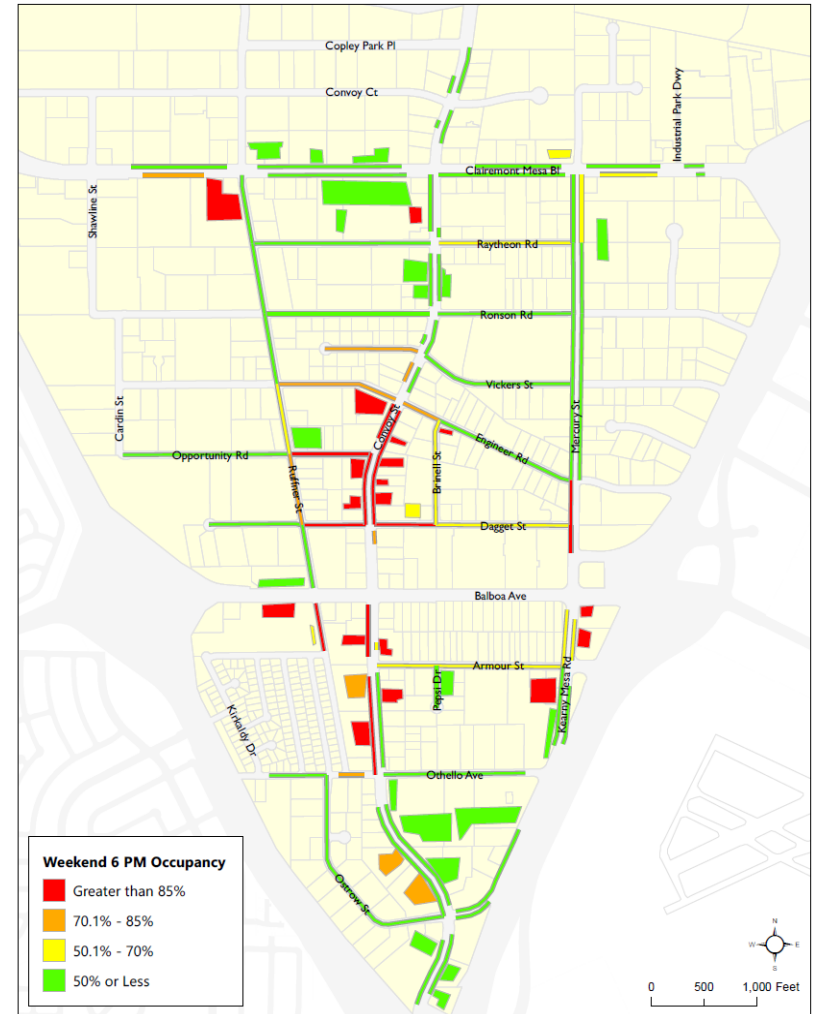
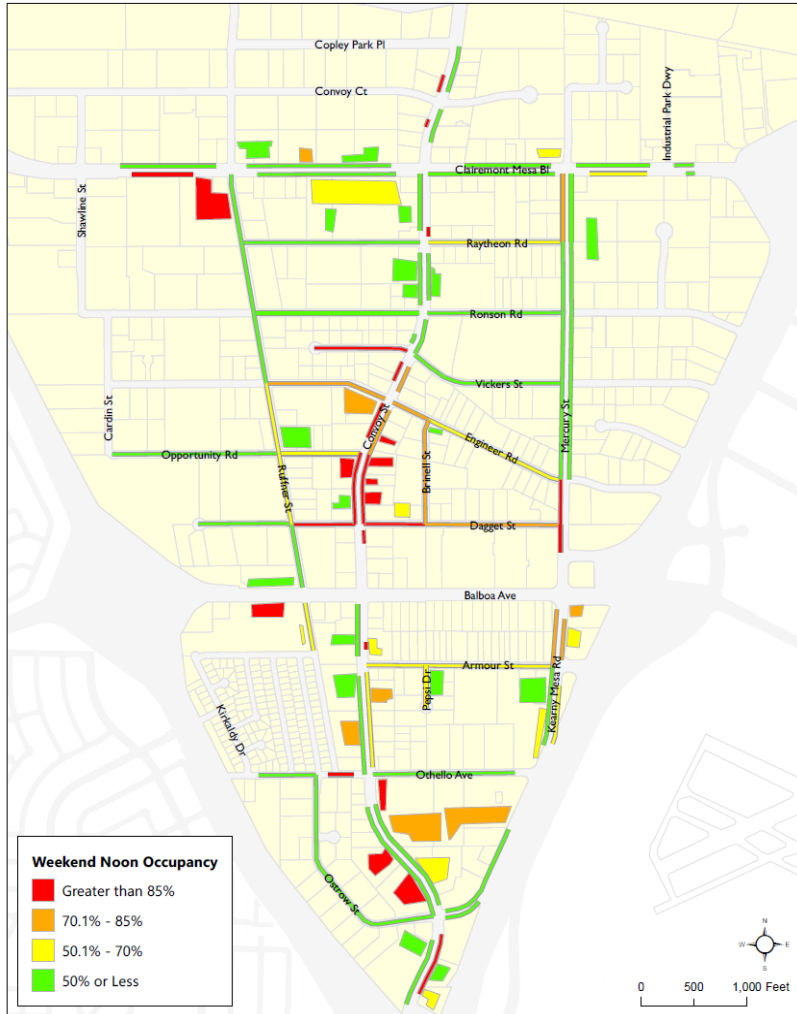


Parking Occupancy – Weekday (6 PM – 7 PM)



Parking Occupancy – Weekend (12 PM – 1 PM)

Parking Occupancy – Weekend (6 PM – 7 PM)



Business Focused Parking Survey

WE NEED TO HEAR FROM YOU



The City of San Diego is conducting a parking study in the Convoy area and would like your feedback as local property and business owners. Now is the time to share specifics about your business and potential opportunities for the area that may be of interest to you.

Please take the survey to provide your input.

PARTICIPATE NOW:
surveyMonkey.com/r/XL99ZTQ

- Survey will take less than 5 minutes
- Survey will be available until Dec. 2 at 11:59 p.m. PST



Questions?

Claudia Brizuela
Senior Traffic Engineer
Sustainability & Mobility Department
CBrizuela@saniego.gov

Lauren Garces
Special Events Coordinator for Convoy District
Asian Business Association San Diego
info@convoydistrict.com

The City of **SAN DIEGO**

@CITYOFSANDIEGO



- Businesses indicated employees primarily park on-street and on-site private lot
- 60% of respondents did not support time limited parking
- 73% of respondents support shared parking agreements with other businesses
- 36% of respondents support electric vehicle car share and charging infrastructure

Customer Focused Survey Results

SHARE YOUR EXPERIENCE



The City of San Diego is conducting a parking study in the Convoy area and would like your feedback as patrons of local businesses along Convoy Street.

Please take the survey to provide your input.

PARTICIPATE NOW:
surveyMonkey.com/r/G9QW2LR

- Survey will take less than 2 minutes
- Survey will be available until Jan. 15 at 11:59 p.m. PST



Questions?

Claudia Brizuela
Senior Traffic Engineer
Sustainability & Mobility Department
CBrizuela@sandiego.gov

Lauren Garces
Special Events Coordinator for Convoy District
Asian Business Association San Diego
info@convoydistrict.com

The City of **SAN DIEGO** | @CITYOFSANDIEGO



- 93% currently drive to businesses along Convoy Street
- 84% said they visit Convoy businesses between 3 hours or less
- Majority willing to walk up to 5 minutes to businesses
- Majority willing to pay \$1-5 for parking

Preliminary Findings

- Parking is most impacted during lunch hours (11 am – 2 pm) and evening hours (5 – 7 pm)
- Majority of vehicles are typically parked for 1 - 2 hours along Convoy Street
- In areas with high utilization, parking is generally available nearby
 - Angled parking conversions may add capacity
- Paid public parking lots are not fully occupied
 - Signage can help guide customers to nearby parking spaces
 - Coordinate with businesses to list public parking spaces
- Appears employees primarily park off-street
 - Opportunity to expand shared parking arrangement for off-site parking for employees

Parking Management Recommendations



Angled Parking Conversions



Shared Parking



Shuttle Services



Wayfinding Signage



Pedestrian Enhancements



Micromobility Infrastructure

Angle Parking Conversions

Concurrent implementation with overlay:

- Armour Street – Additional 16 parking spaces
- Brinnell Street – Additional 6 parking spaces
- Pepsi Drive – Additional 6 parking spaces

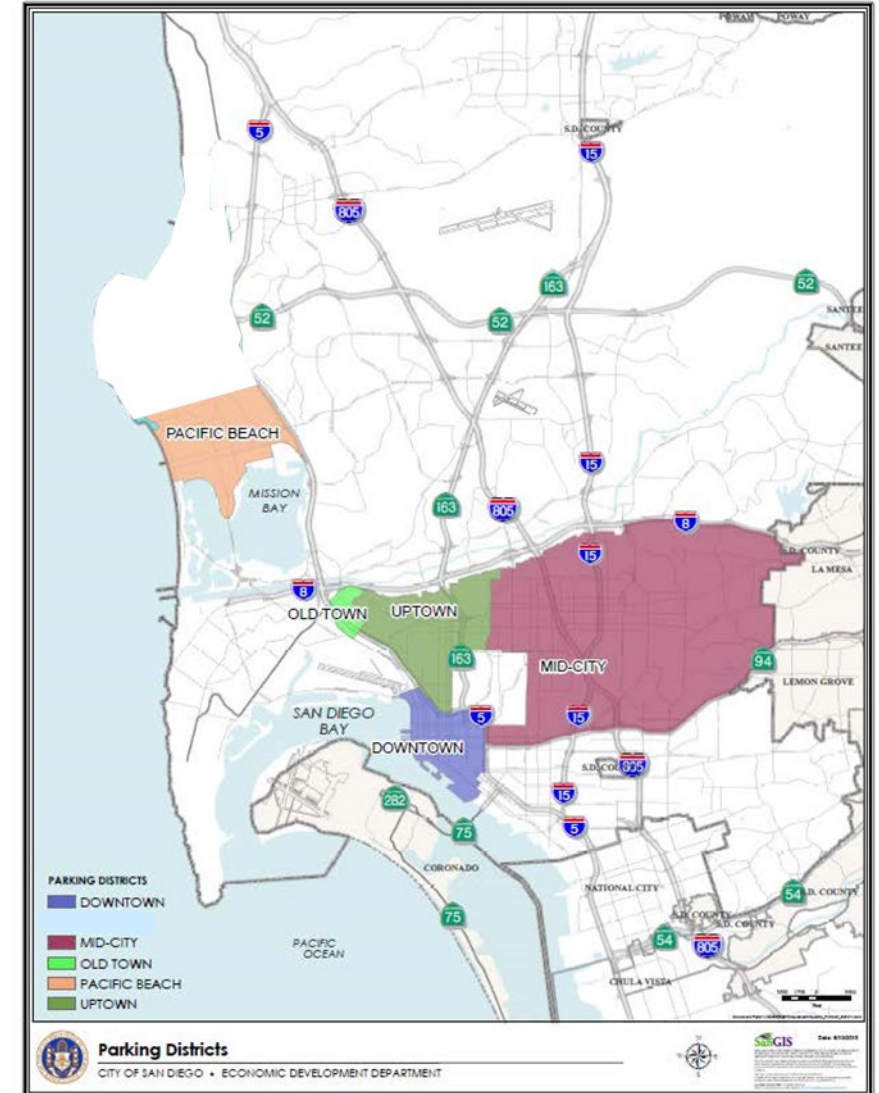
Previous Angle installs

- Dagget St – 23 Completed in 2020
- Vickers St – 76 Completed in 2018
- Opportunity Rd – 14 Completed in 2020
- Total – 113



Community Parking Districts (CPD)

- Offer community-focused parking management strategies in adversely impacted areas
- Five (5) CPDs in the City of San Diego:
 - Downtown
 - Uptown
 - Mid City
 - Old Town
 - Pacific Beach
- CPDs develop Annual Plan and Budgets, approved by City Council every year
- [Council Policy 100-18](#)



Kearny Mesa CPD Conceptual Plan

Administration and Management

- Administered by the Convoy District Partnership
- Explore revenue generating opportunities (shared parking agreements, valet, etc.)

Proposed Initiatives

- Shared parking
- Pedestrian-scale lighting
- Wayfinding (parking and transportation information)
- Community shuttle service





Proposed CPD Boundary

Kearny Mesa Community Planning District

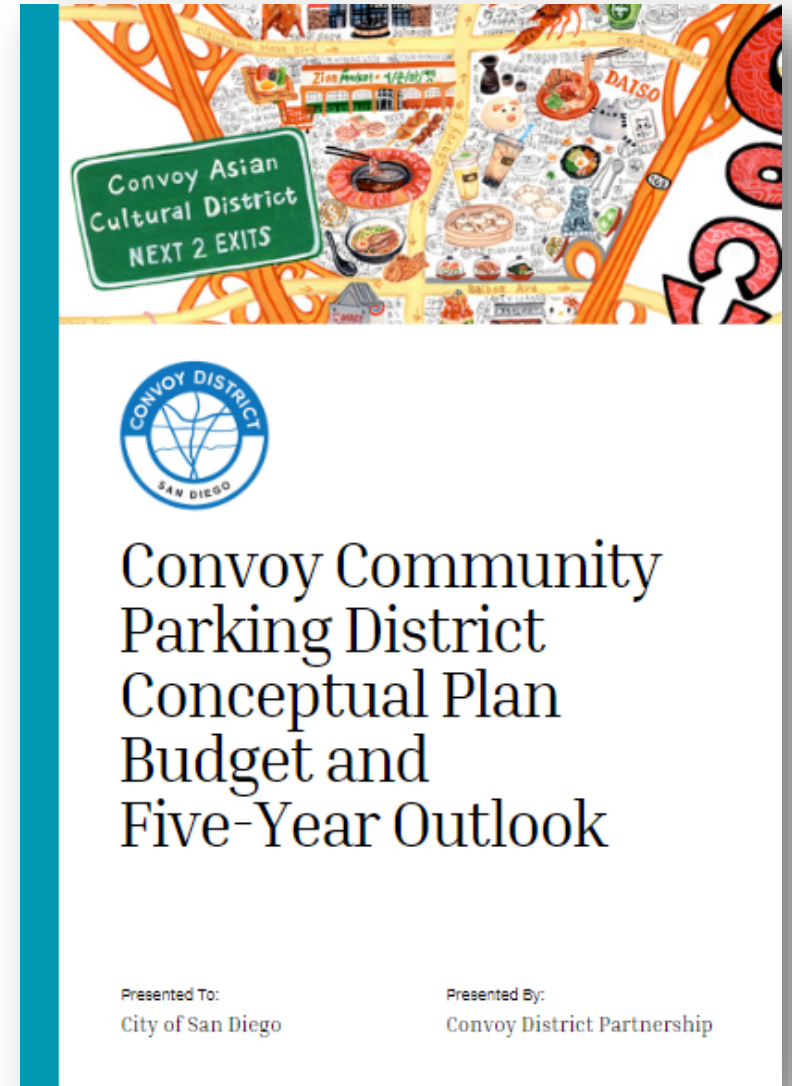
- Bounded by the SR-163 on the East, I-805 on the West, and SR-52 on the North
- Provides greatest flexibility in implementing comprehensive parking management solutions
- Inclusive of future development in the community



	Kearny Mesa CPD: Community Planning Area		 0 2,000 4,000 Feet
	Sustainability and Mobility Department	2023	

CPD Next Steps

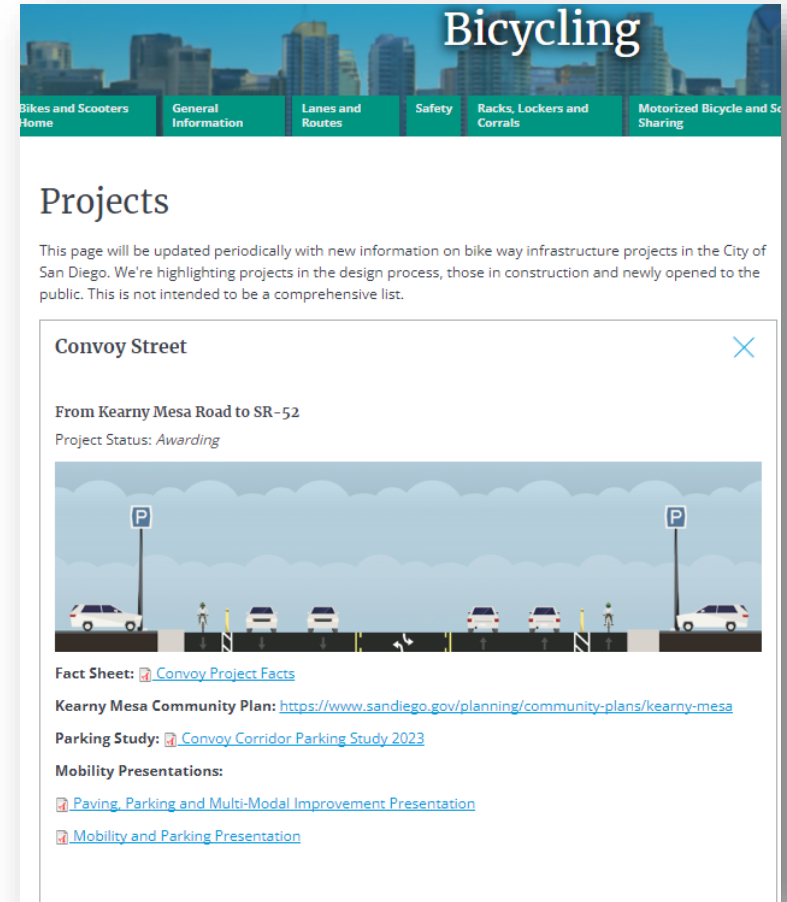
- **May 4– June 4:** Public Input on CPD Conceptual Plan
- **May 17th, 11:30 am:** Kearny Mesa Community Planning Group
 - Serra Mesa-Kearny Mesa Library
- **Summer 2023** - ATI Committee
- **Fall 2023** – City Council



The CPD Conceptual Plan is on the [Convoy District Partnership's website](#).

Resources

- Information about the Convoy Street Road Repair and Bike Installation project is available [here](#) including:
 - [Fact Sheet](#)
 - [Convoy Parking Study](#)
- Provide feedback on the [Kearny Mesa CPD Conceptual Plan](#) through June 4. Email info@convoydistrict.com.
- Interested in a bike rack? The City offers bike racks to businesses at approved locations. [Fill out the bike rack inquiry form!](#)
- [The Kearny Mesa Community Plan](#) was updated in 2020 with a vision for growth as a vibrant employment community with thriving businesses and active spaces.



The screenshot shows the "Bicycling" section of the City of San Diego website. The page title is "Bicycling" and the navigation menu includes "Bikes and Scooters Home", "General Information", "Lanes and Routes", "Safety", "Racks, Lockers and Corrals", and "Motorized Bicycle and Scooter Sharing". The main content area is titled "Projects" and contains a section for "Convoy Street". The project description states: "From Kearny Mesa Road to SR-52" and "Project Status: Awarding". Below the text is an illustration of a street scene with a parking sign, a car, a person on a bicycle, and a person walking. The page also includes links for "Fact Sheet: Convoy Project Facts", "Kearny Mesa Community Plan: https://www.sandiego.gov/planning/community-plans/kearny-mesa", "Parking Study: Convoy Corridor Parking Study 2023", and "Mobility Presentations: Paving, Parking and Multi-Modal Improvement Presentation" and "Mobility and Parking Presentation".

Thank you!
Questions?