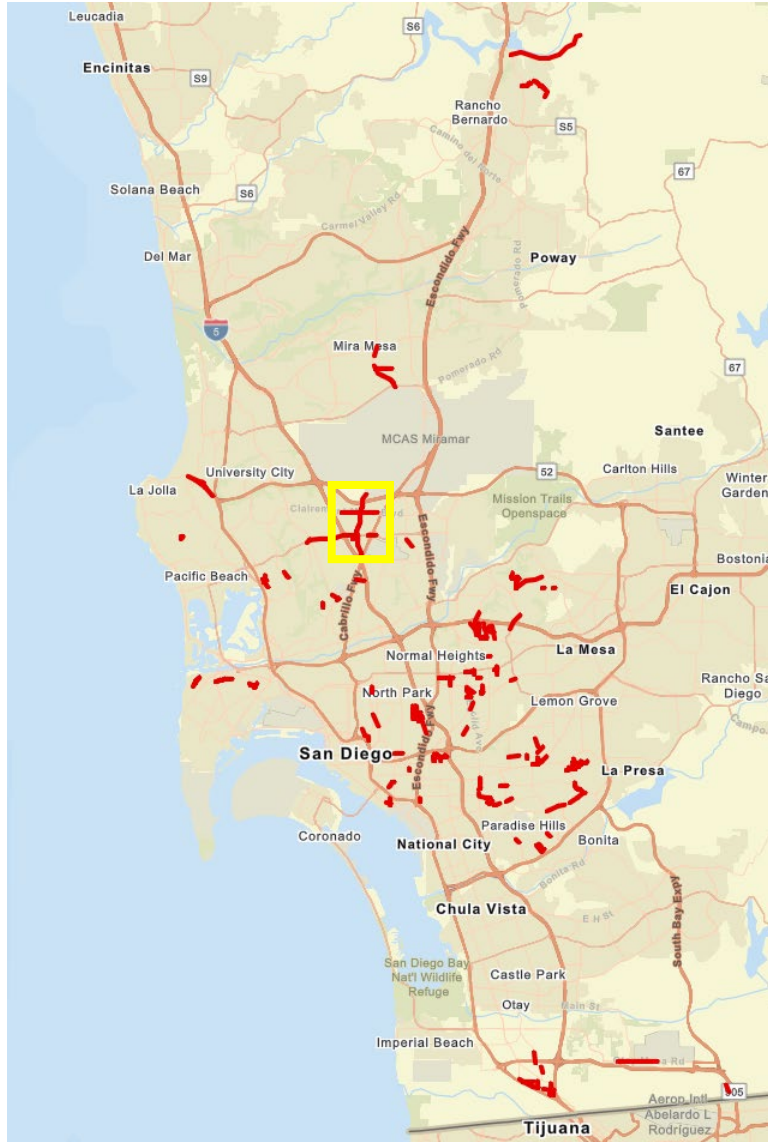


Kearny Mesa Mobility & Parking Study

Background

Bundling Opportunity

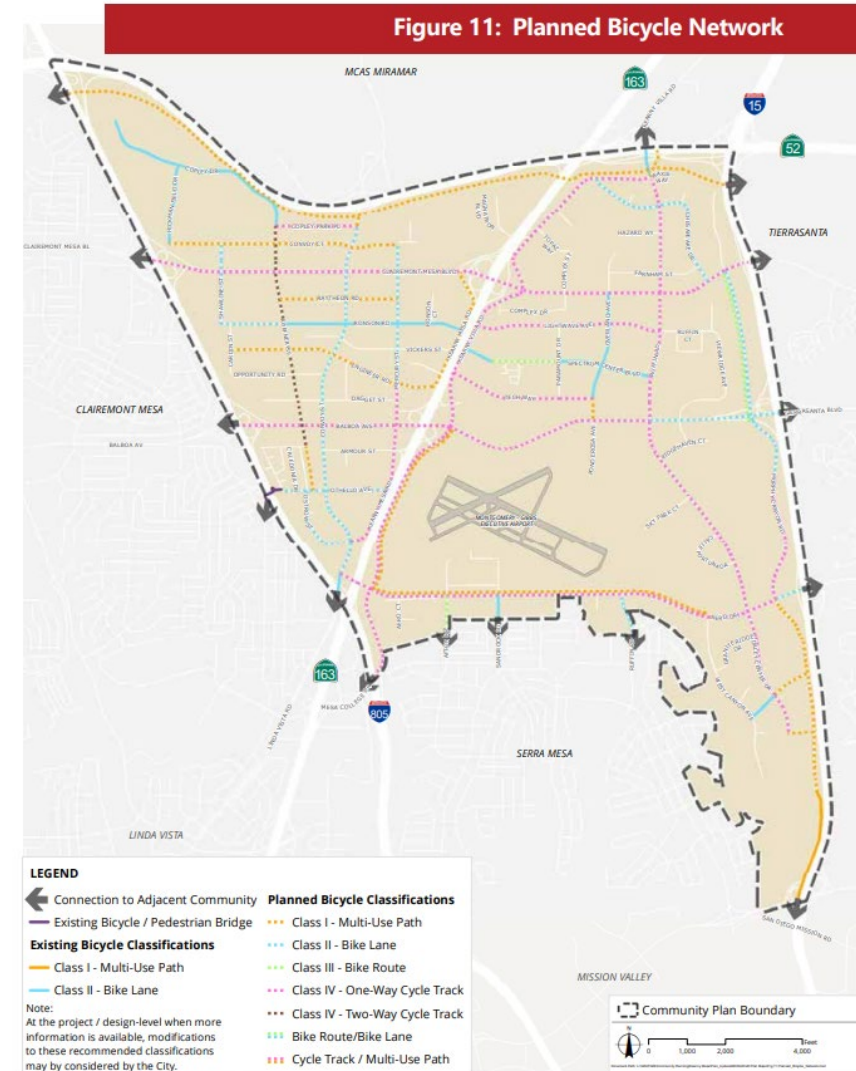
- FY 2023 Overlay





Community Plan Update

November 2020



Spotlight on: Convoy Corridor



Pan-Asian cultural celebration through identity, placemaking and design

Celebrate the Pan-Asian cultural identity of the Convoy Corridor through a unique design that enhances placemaking with culturally-referencing or complimentary themes, colors, and branding. Incorporate modern design techniques that take cues from Pan-Asian cultures can further energize the area as a destination unto itself.



Parks, Plazas, and Open Spaces

As an economic and cultural center of San Diego's Asian Pacific-American community, the Convoy corridor attracts visitors from across the City. New parks and plazas can create inviting community places for gathering.



Clairemont Mesa Blvd.

Raytheon Rd.

Balboa Ave.

Othello Ave.

Convoy Ct.



Convoy Street



Streetscapes and Gateways

Augmented streetscapes can accommodate multiple travel modes while creating a sense of place. The Convoy Corridor can draw more visitors with distinct and memorable gateway and design features.



Active Spaces and Frontages

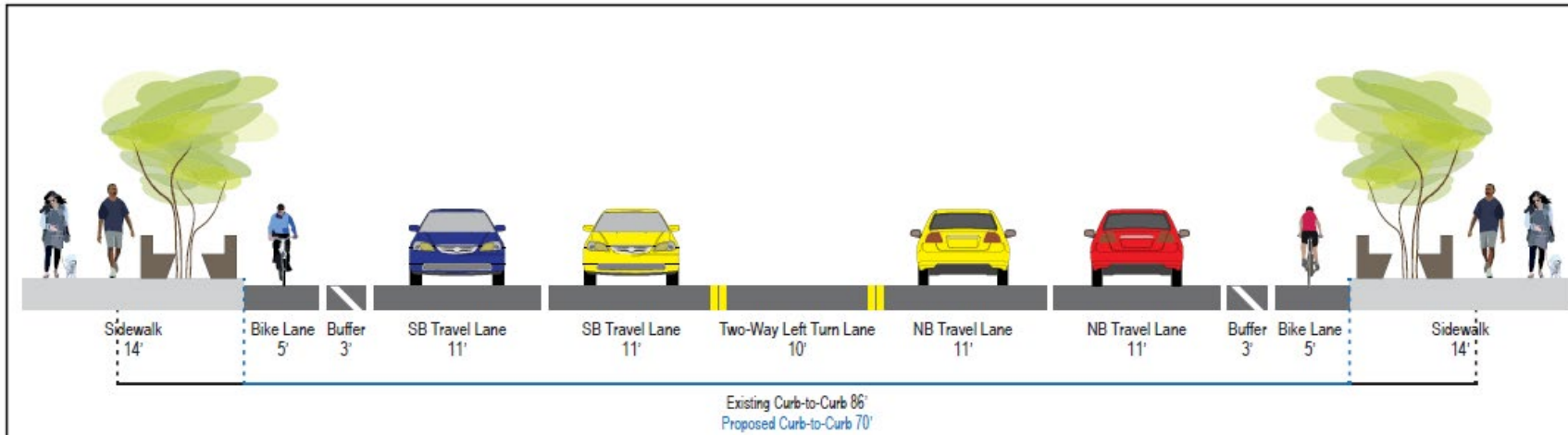
Spaces and buildings oriented to pedestrians can improve connectivity, interaction, and safety. An active, engaging network of paseos, urban paths, and storefronts can enhance the uniqueness of the neighborhood and help businesses thrive.



Incorporate residential units with employment on the corridor

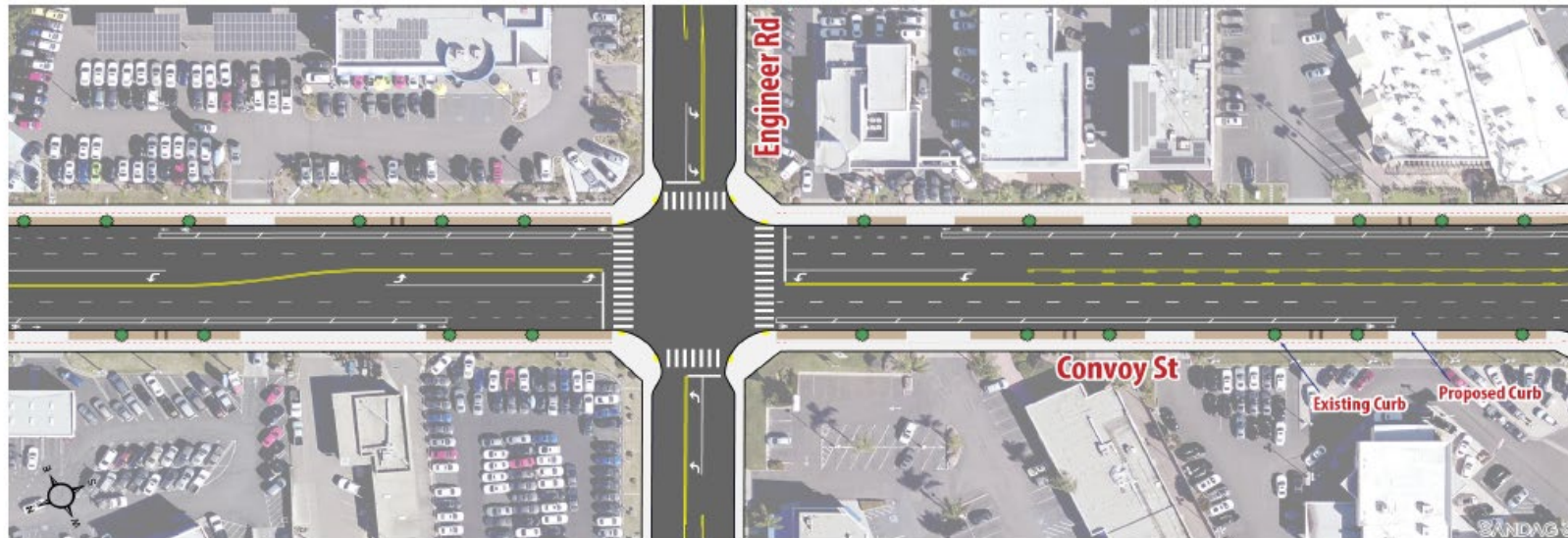
Convoy is an employment-centered corridor with potential for infusion of residential units in vertical mixed-use configurations. Introduction of homes in the area can create opportunities to strengthen local patronage of businesses and provide opportunities for reduction of carbon emissions where people locate near their job.

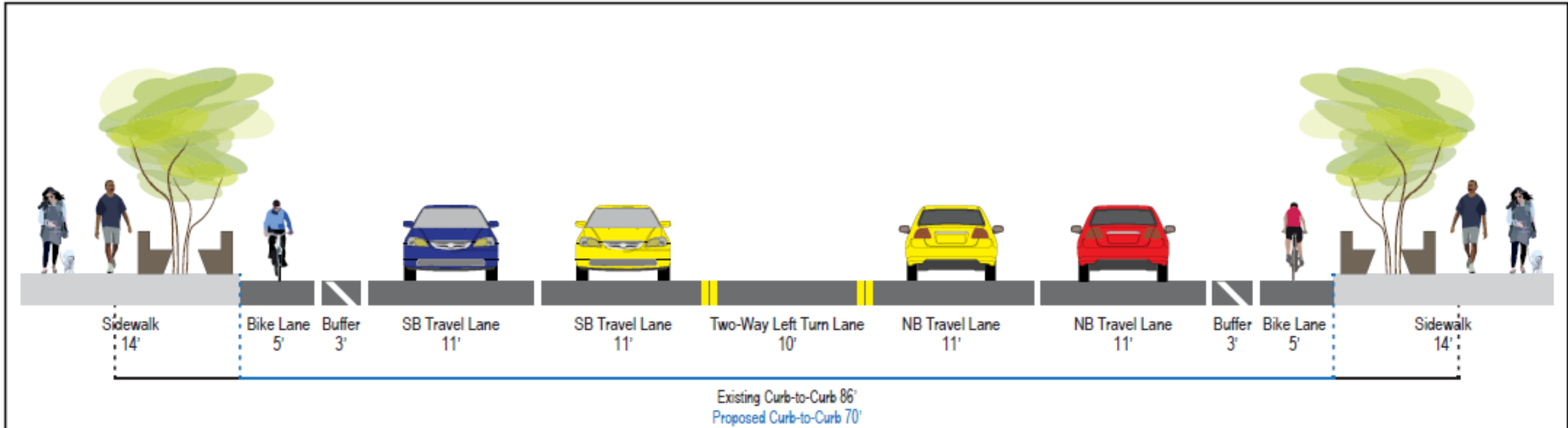




*This graphic is for conceptual purposes only. Further engineering study would be required at the project-level prior to implementation.

**Landscaping, trees, textures, materials, and placement of street furnishing is for illustrative purposes only, further refinement/specifications would be required prior to implementation.





*This graphic is for conceptual purposes only. Further engineering study would be required at the project-level prior to implementation.

**Landscaping, trees, textures, materials, and placement of street furnishing is for illustrative purposes only, further refinement/specifications would be required prior to implementation.

- Data Collection Conducted (7am-8pm):
 - Friday, October 14, 2022
 - Saturday, October 15, 2022
- License Plate Recognition



✓ LICENSE PLATE: pl8rec

✓ TYPE: Sedan

✓ REGION: US-CA

✓ DIRECTION: 90 degrees

✓ MAKE: BMW

✓ MODEL: 3 series

✓ COLOR: Blue

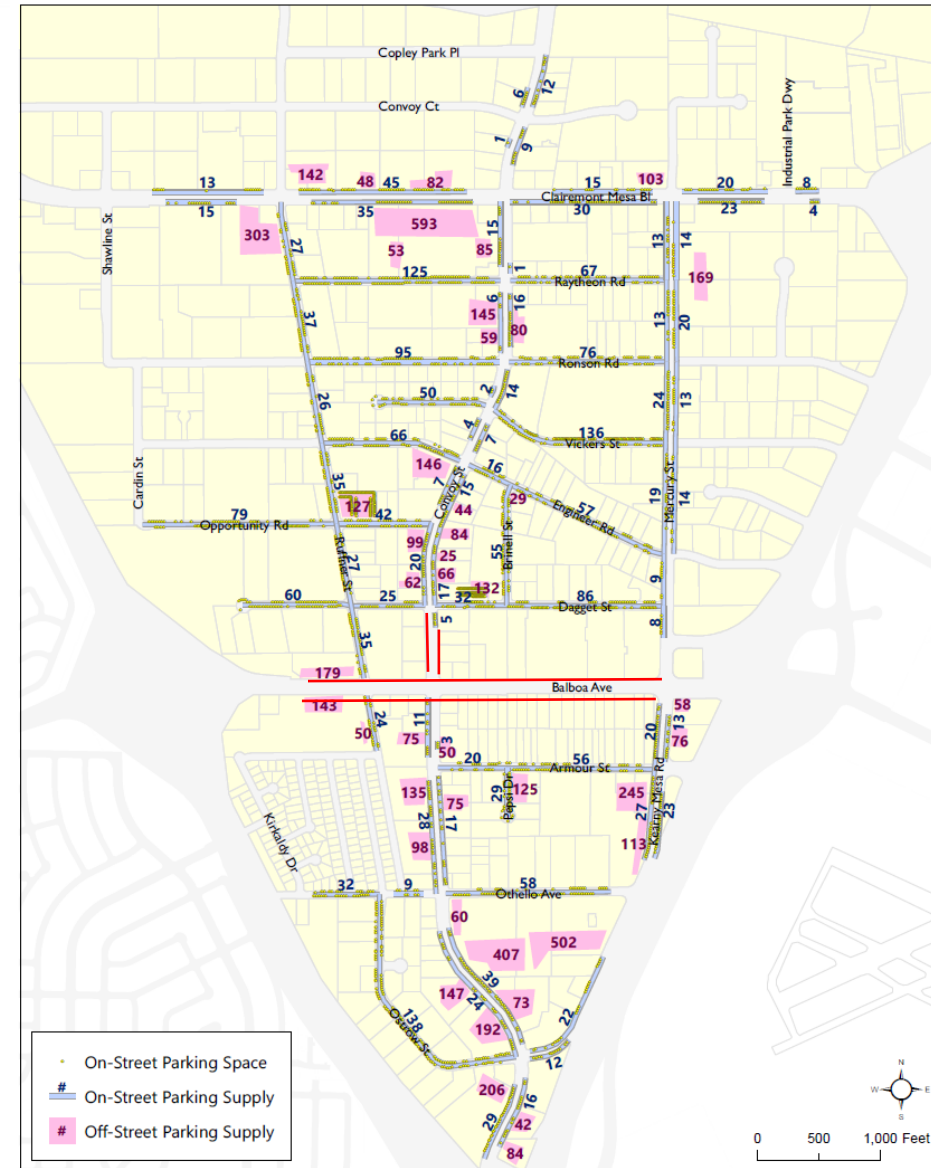
✓ ORIENTATION: Rear

- 55 street segments
- 2 paid parking lots
- 40 off-street parking lots

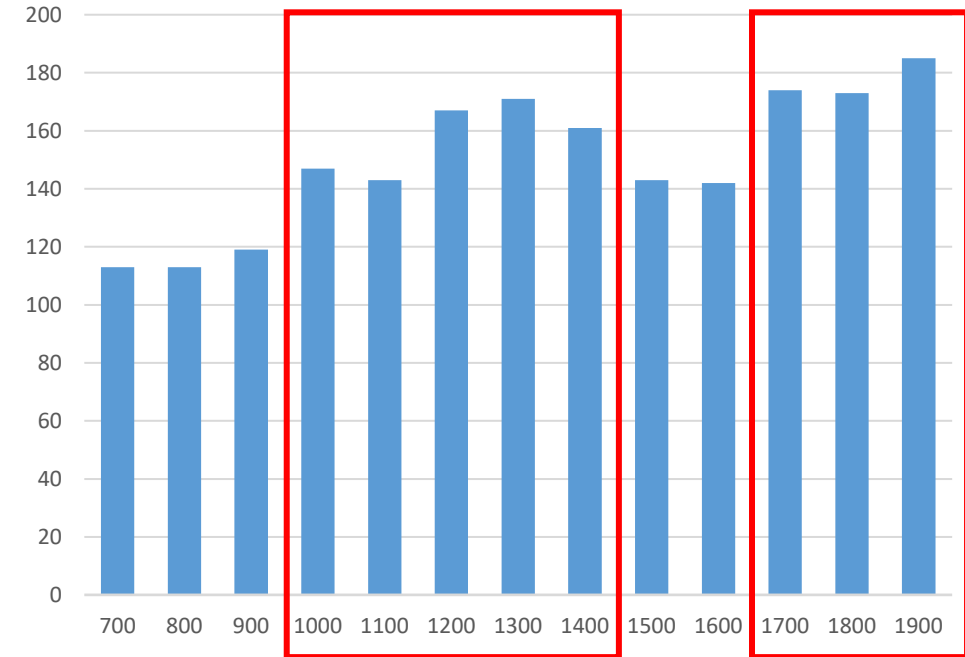
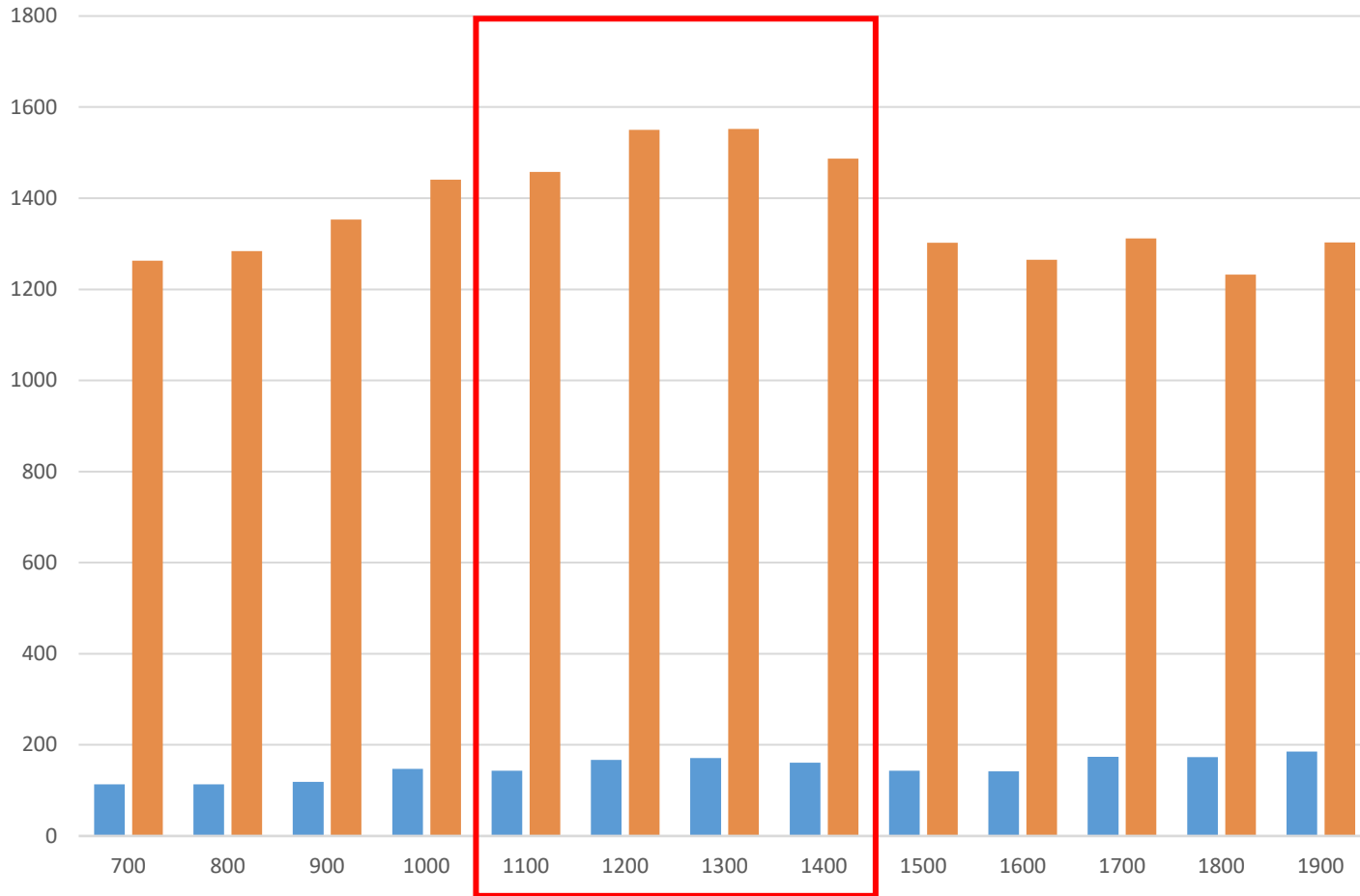


Parking Type	Total
On-Street – Convoy	325
On-Street - Other	2,092
Subtotal	2,417
Off-Street (Private)	4,959
Off-Street (Zion)	593
Off-Street (Paid Public)	259*
Subtotal	5,811
Total Spaces	8,228

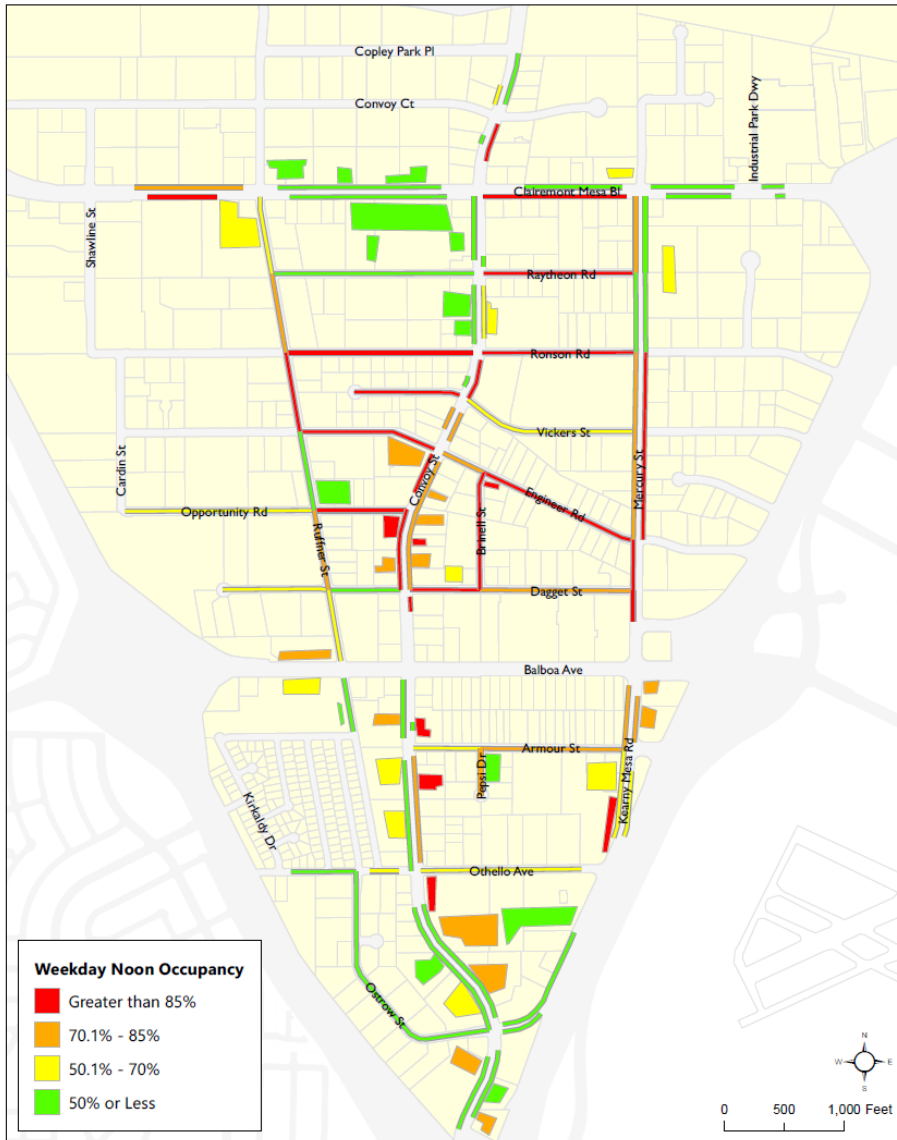
* Includes 84 unmarked spaces at Jasmine



On-Street

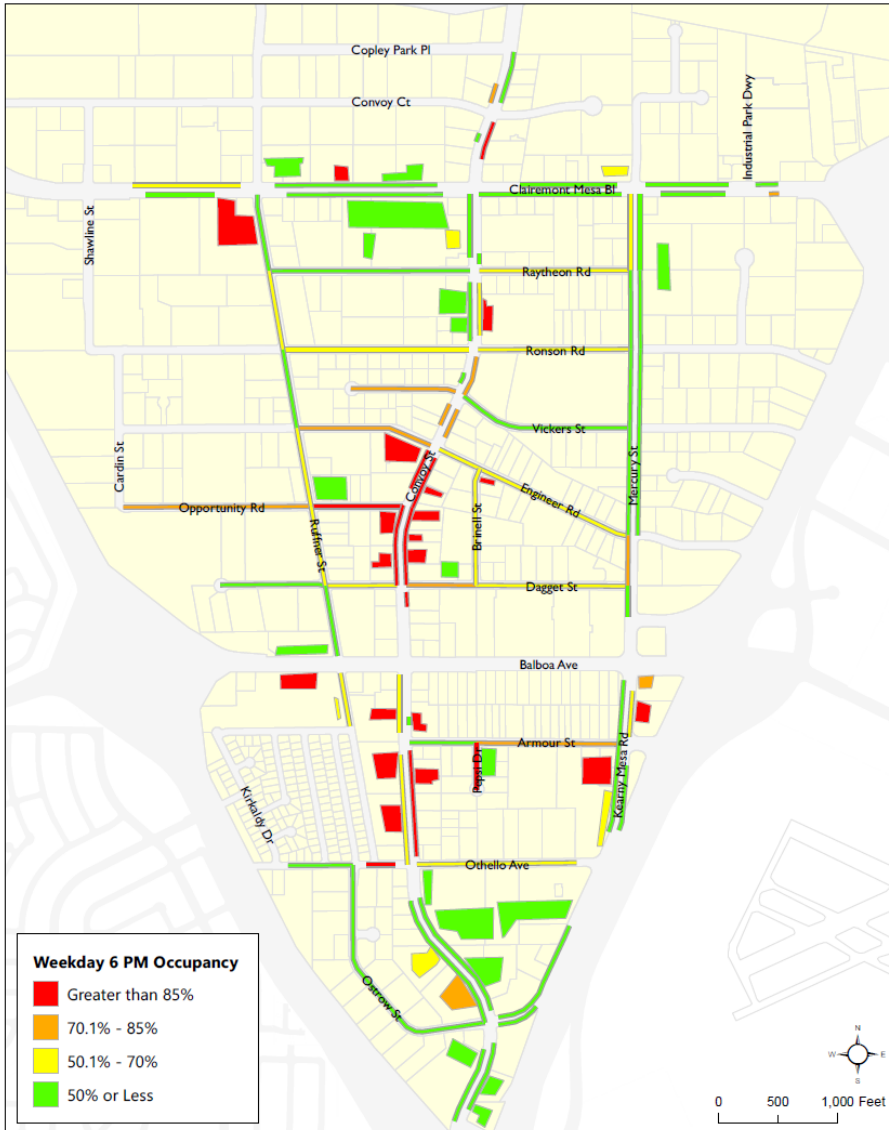


Study Area Convoy



Weekday (12 PM – 1 PM)

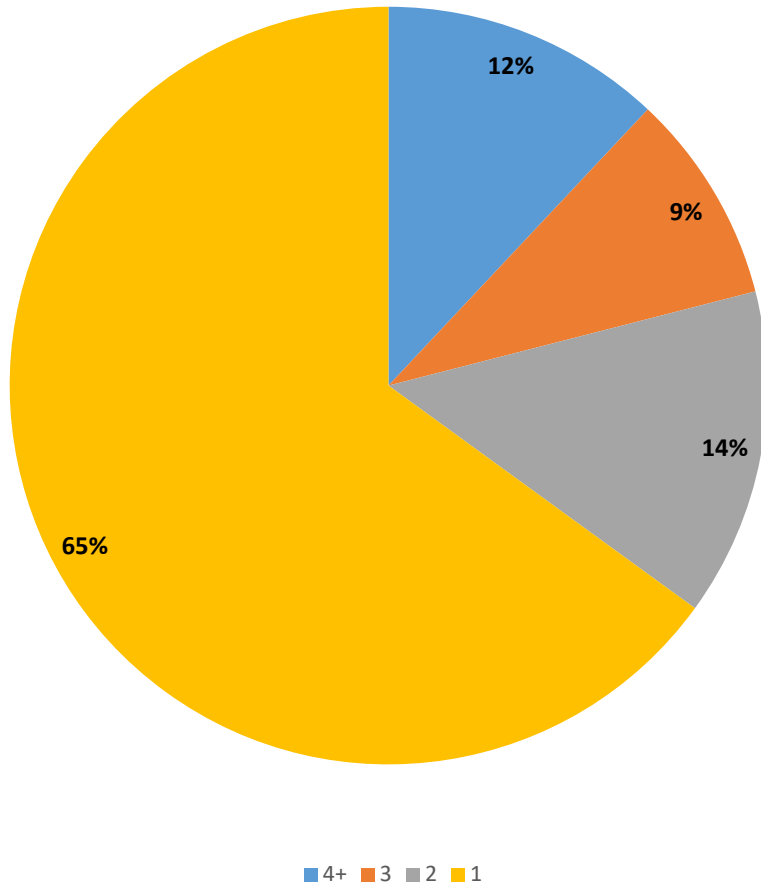
- High utilization of parking along Convoy Street between Ronson Road and Daggett Street and along segments within walking distance of this area
- Some high utilization along portions of Clairemont Mesa Blvd, Mercury, and off street lots near Armour Street



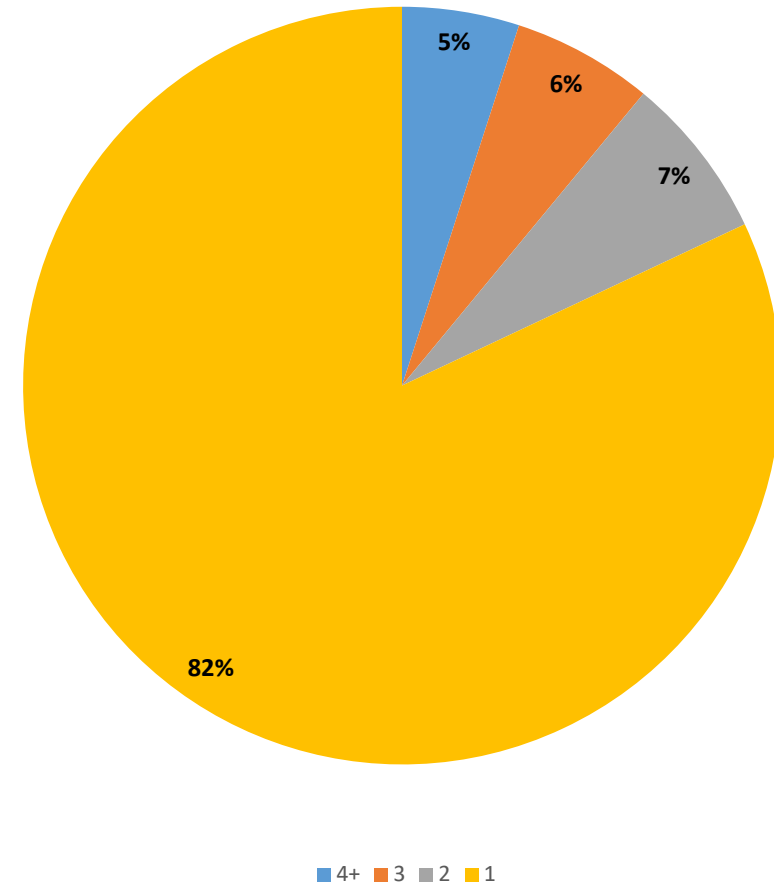
Weekday (6 PM – 7 PM)

- High utilization of parking along Convoy between Engineer Road and Daggett Street and along segments within walking distance of this area
- High utilization of parking along Convoy Street and in off street parking lots between Armour Street and Othello Avenue
- Some high utilization along off street lot on Clairmont Mesa Blvd and Ruffner Street, and some off street lots along Kearny Mesa Road

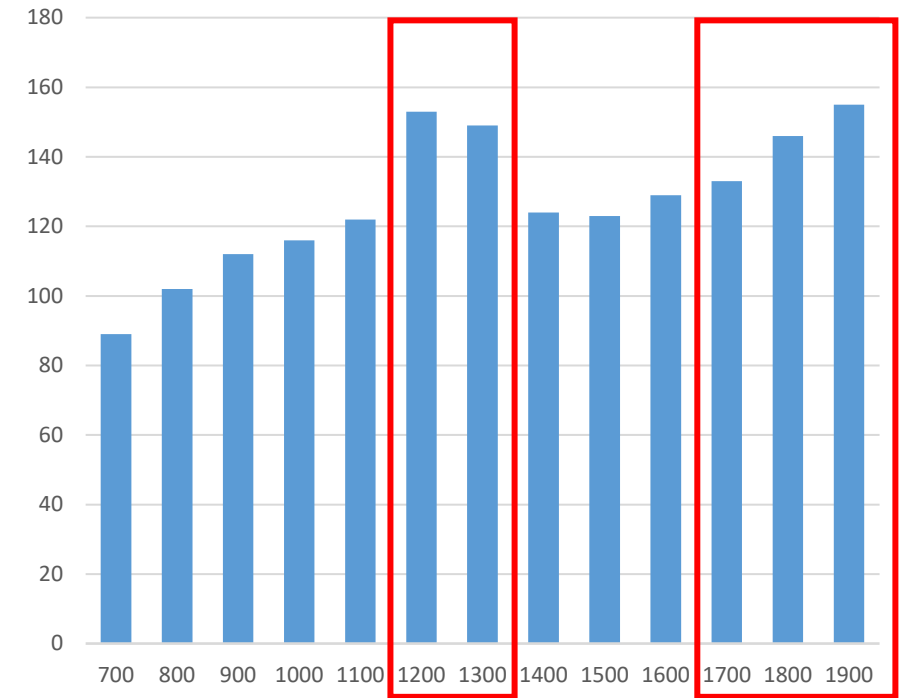
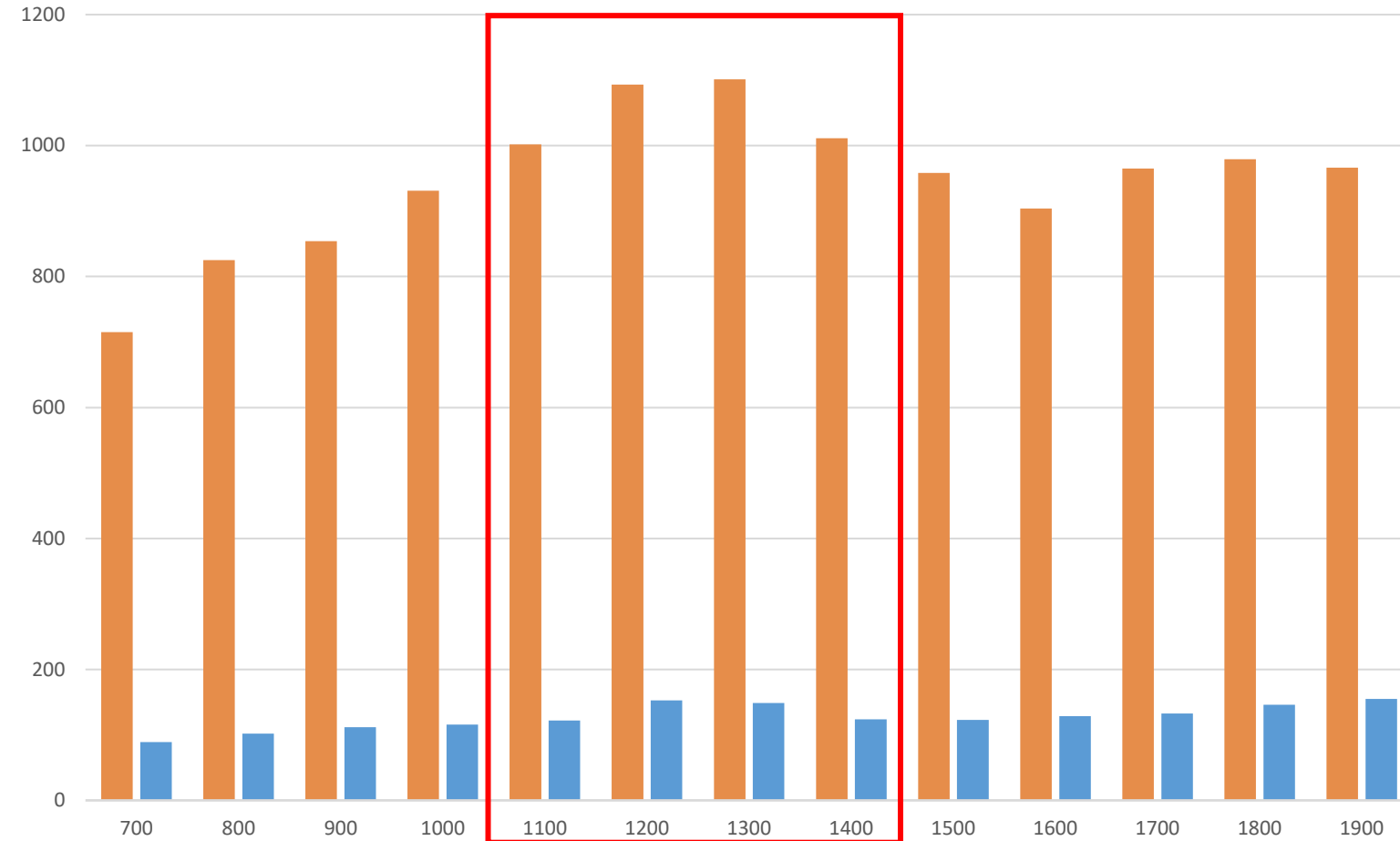
Study Area



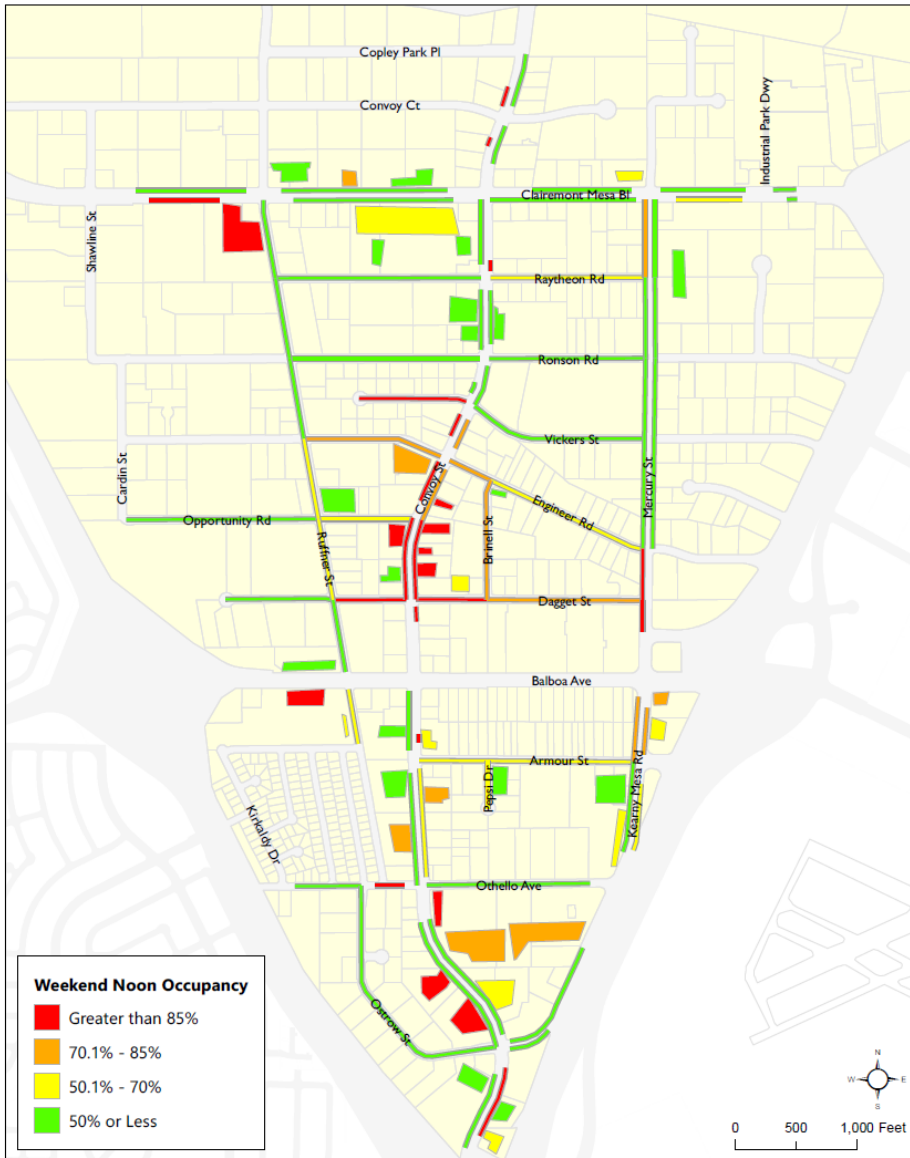
Convoy



Weekend (On-Street)

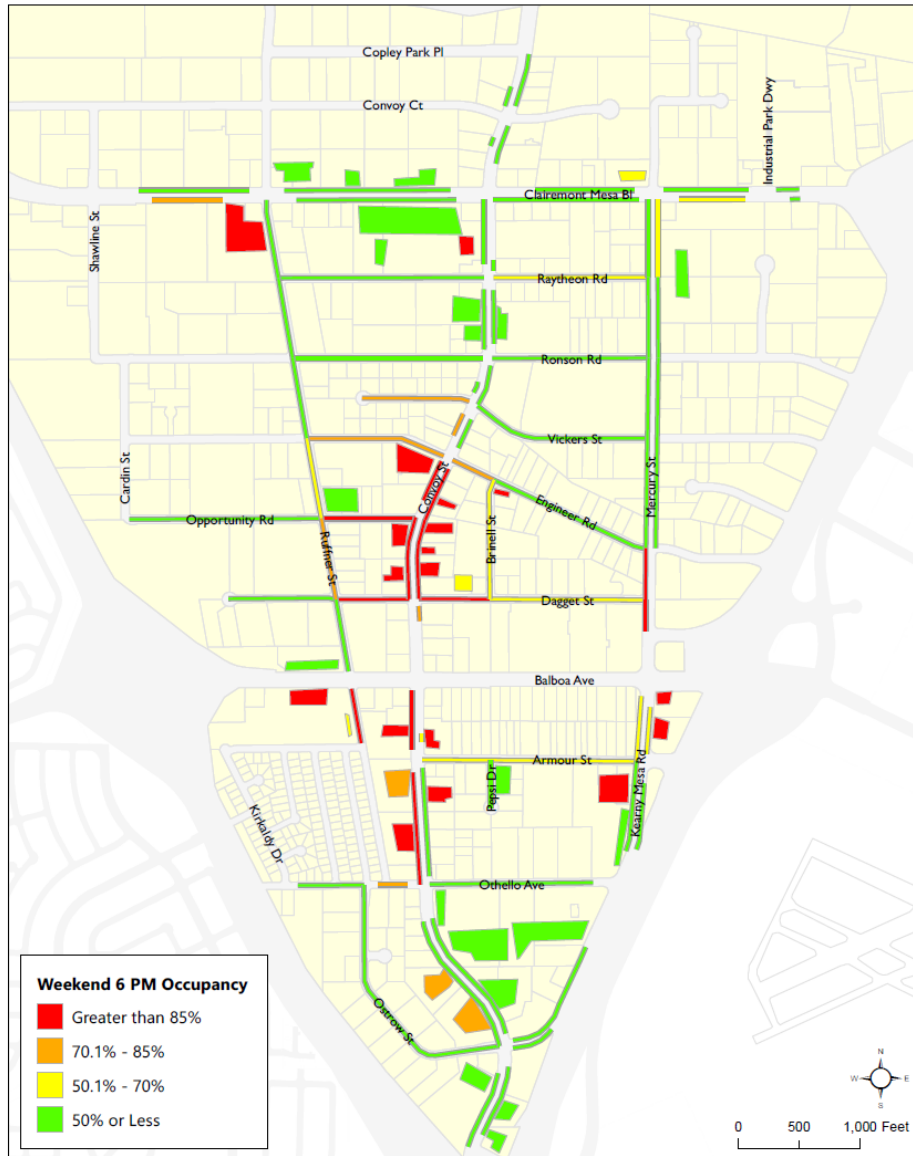


Study Area Convoy



Observations:

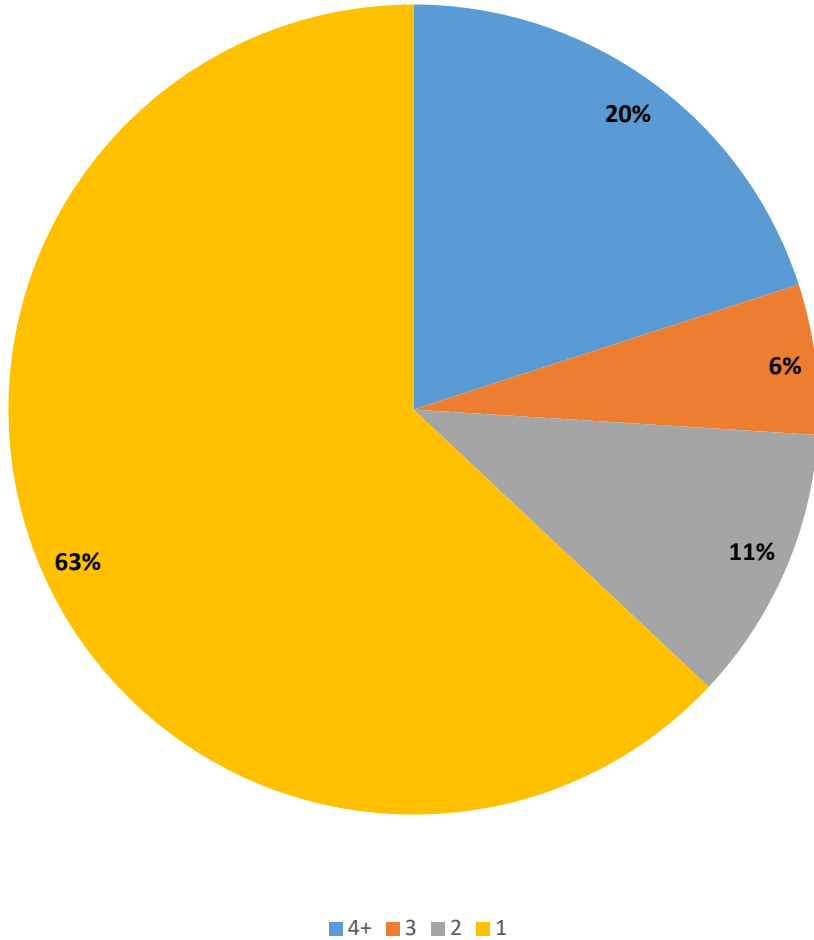
- High utilization of parking along Convoy between Engineer Road and Daggett Street
- Parking is utilized more along segments within walking distance of this area
- Some high utilization along portions of Clairmont Mesa Blvd, Mercury, and off street lots near Ostrow Street and Othello Avenue



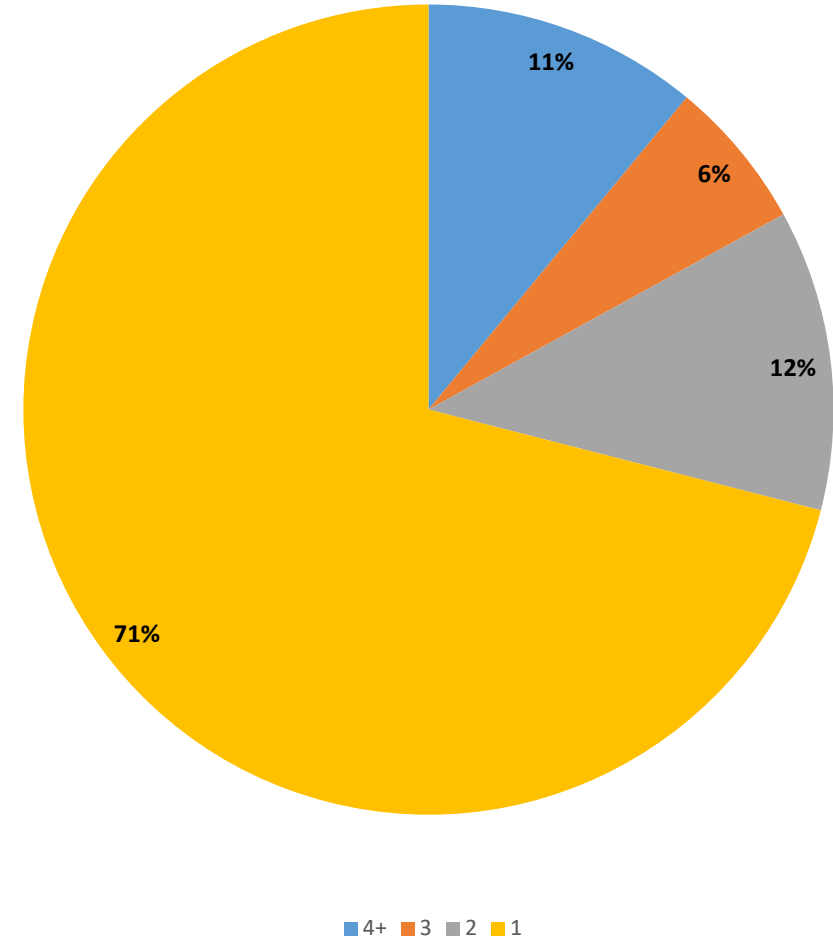
Observations:

- High utilization of parking along Convoy between Engineer Road and Daggett Street
 - Parking is utilized along segments within walking distance of this area
- High utilization of parking along Convoy Street and in off-street parking lots between Balboa Avenue and Othello Avenue
- Some high utilization along off-street lot on Clairemont Mesa Blvd near Ruffner Street, and some off street lots along Kearny Mesa Road

Study Area



Convoy



WE NEED TO HEAR FROM YOU



The City of San Diego is conducting a parking study in the Convoy area and would like your feedback as local property and business owners. Now is the time to share specifics about your business and potential opportunities for the area that may be of interest to you.

Please take the survey to provide your input.

PARTICIPATE NOW:
surveymonkeys.com/r/XL99ZTQ



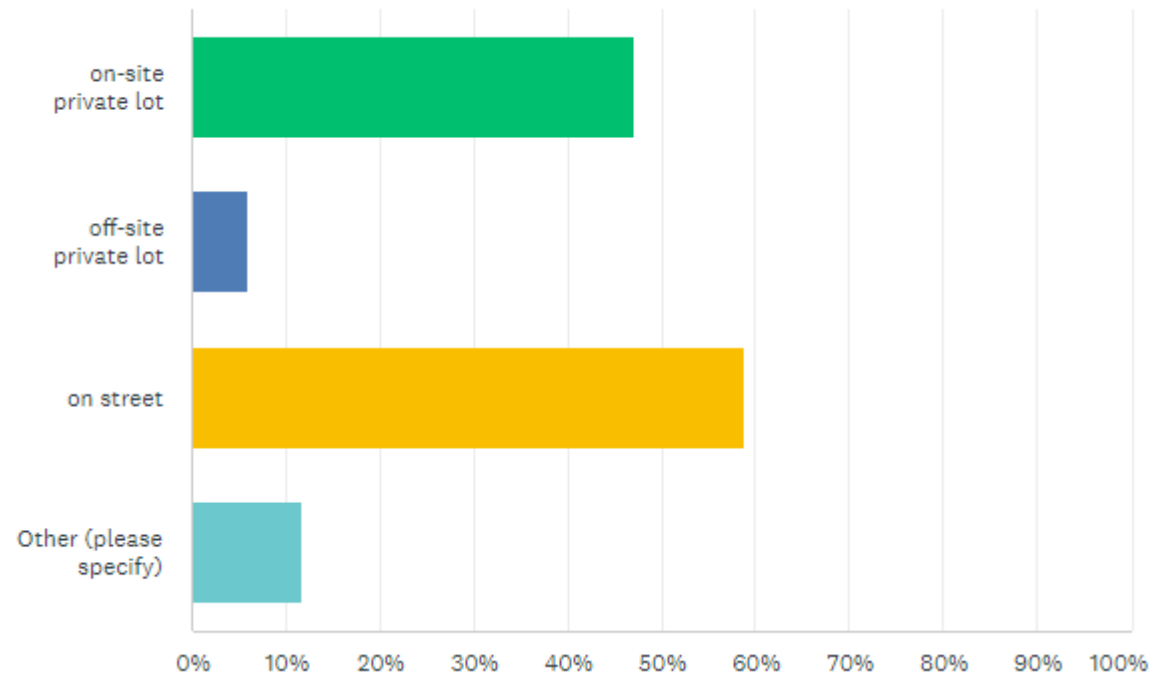
- Survey will take less than 5 minutes
- Survey will be available until Dec. 2 at 11:59 p.m. PST

Questions?

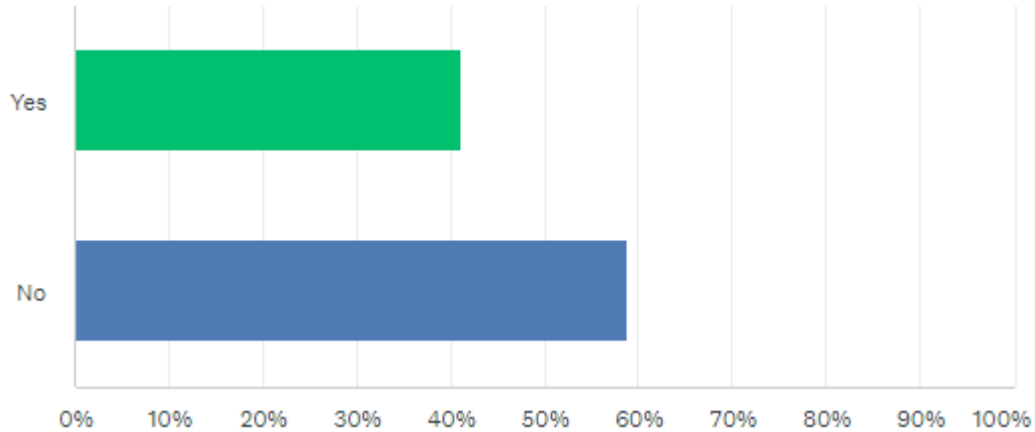
Claudia Brizuela
Senior Traffic Engineer
Sustainability & Mobility Department
CBrizuela@sandiego.gov

Lauren Garces
Special Events Coordinator for Convoy District
Asian Business Association San Diego
info@convoydistrict.com

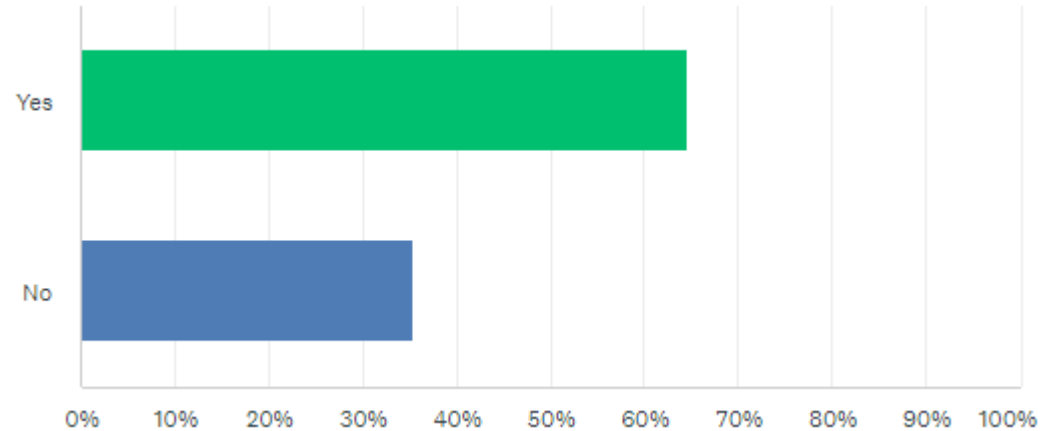
Where do **employees** park? (check all that apply)



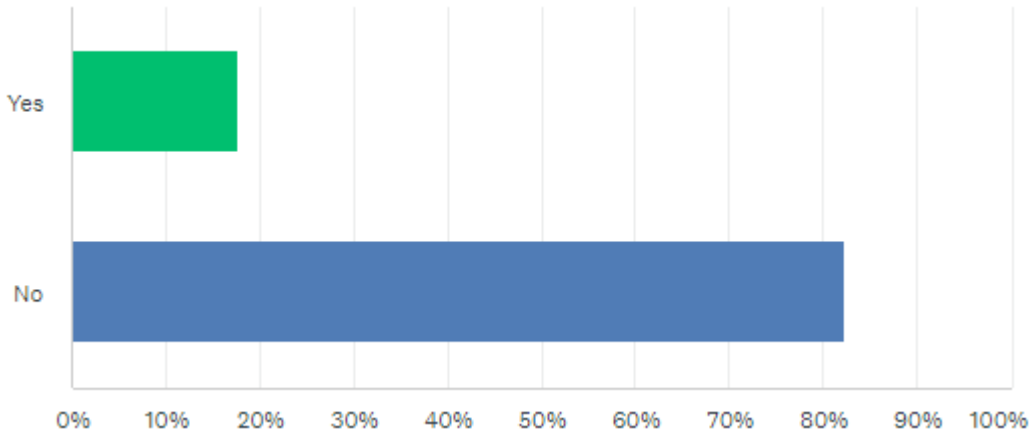
Would you support **time-limited** parking (example: 2-hour parking limit)?



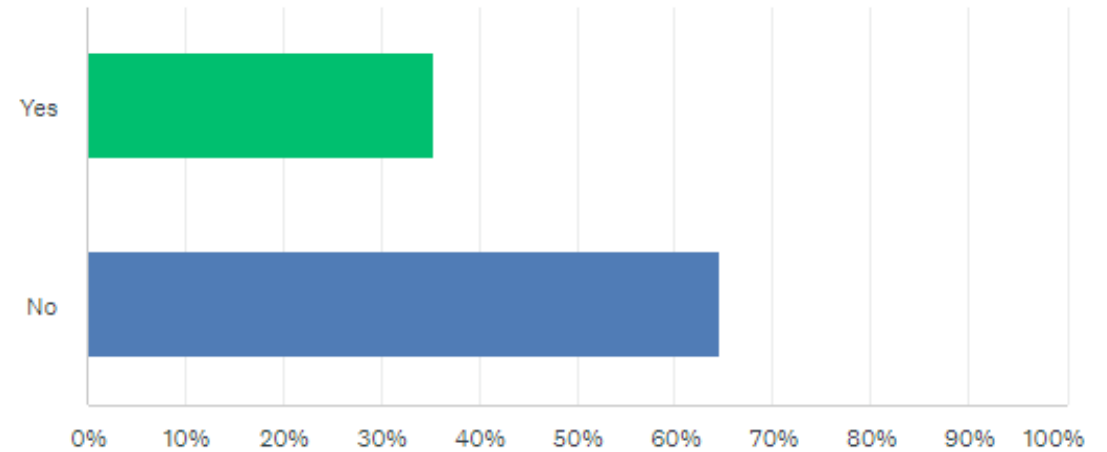
Would you support the **creation of a parking district**? The purpose of the parking district is to improve parking availability and encourage turnover to promote economic growth for local businesses.



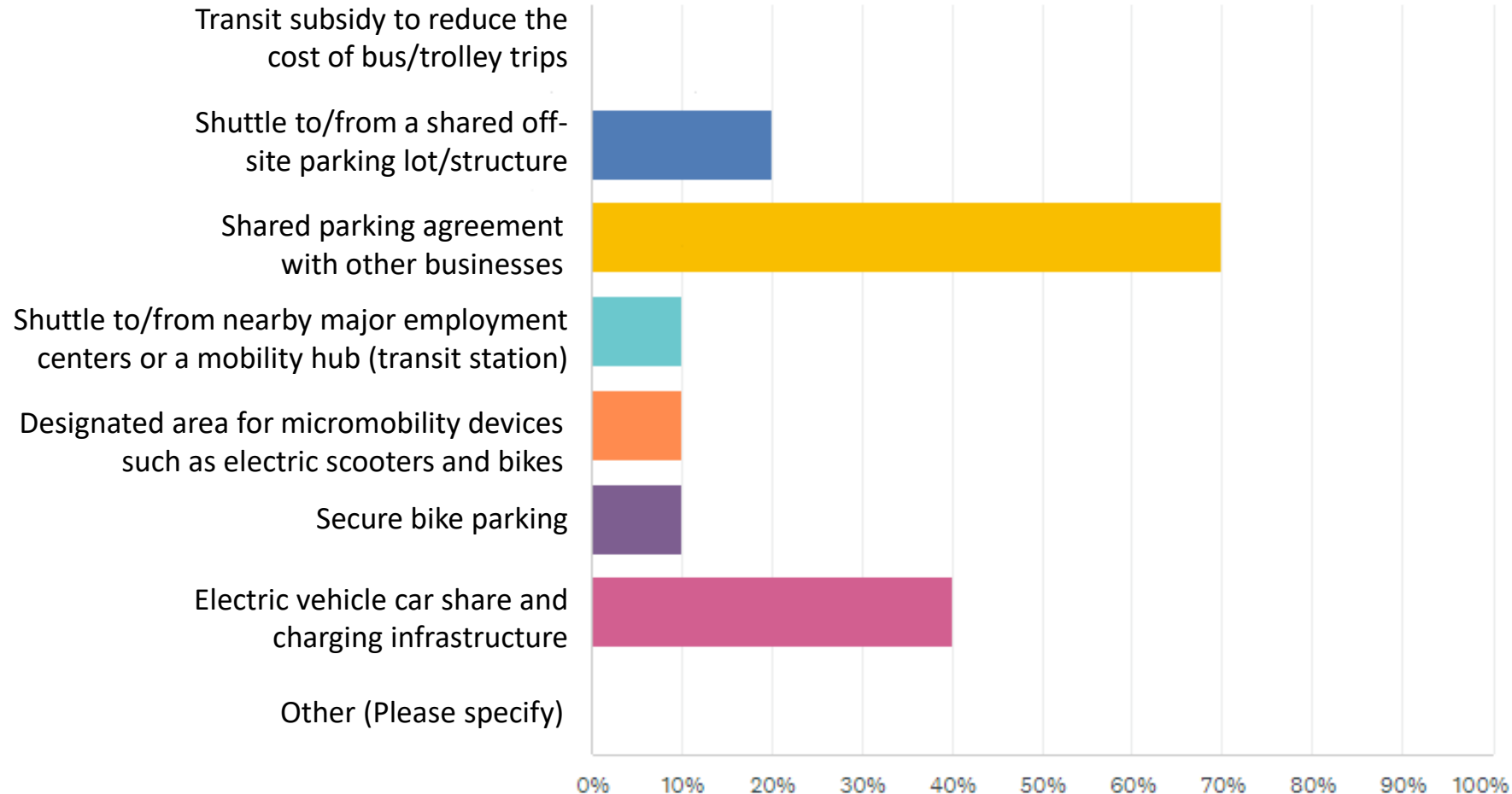
Would you support **parking meters** as a part of the parking district formation?



If some of the funding from parking meter fees was used to make **parking and street improvements** in the community, would you support **parking meter** installation?

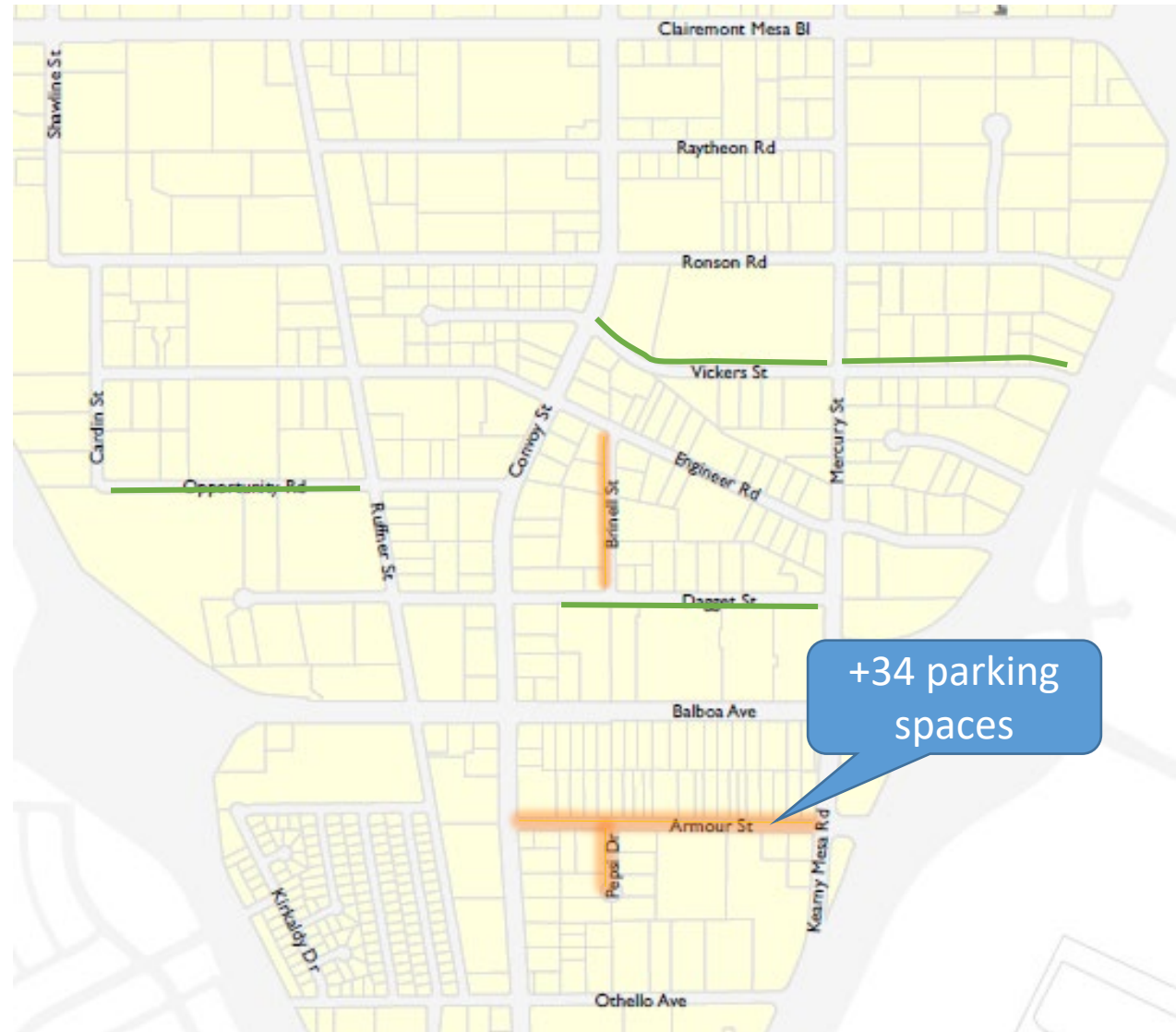


Select **options** below, that may be of interest to your business:



Past Angle Conversions	Spaces
Dagget St	45
Vickers St	80
Opportunity Rd	46
Total	171

Additional Conversions	Spaces
Armour Street	~ +34
Brinell Street	Evaluation underway
Pepsi Drive	Evaluation underway



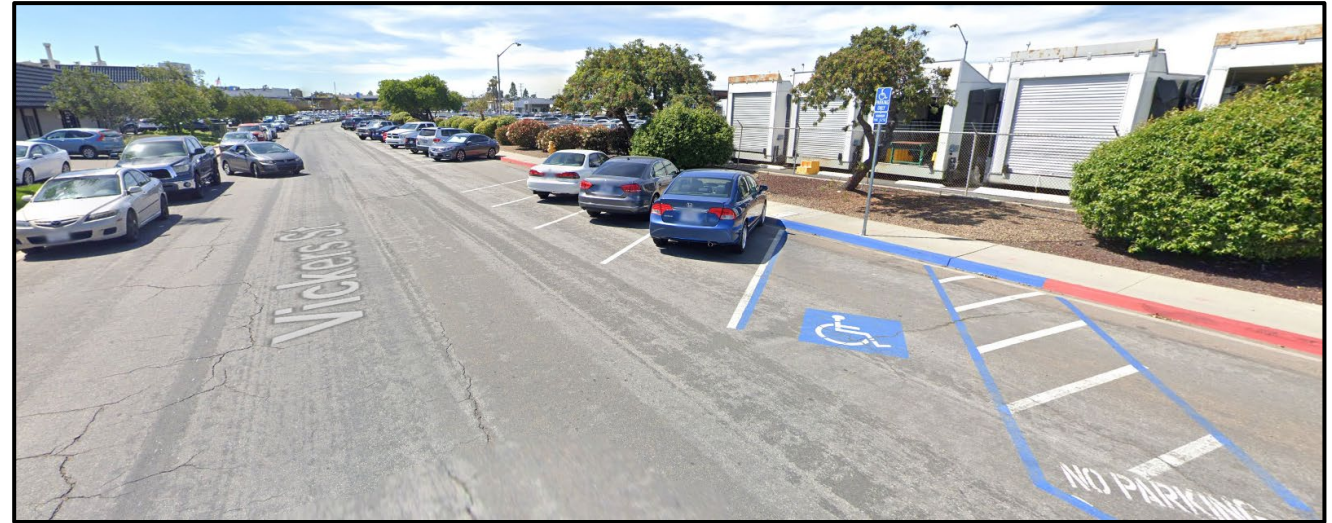
+34 parking spaces

Preliminary Findings

- Generally, where we observed higher utilization of parking there was available parking nearby
- Repurposing of parking along Convoy Street can be absorbed by nearby available parking spaces
 - In certain areas with higher utilization angle parking conversions are being evaluated to offset some parking loss for those specific areas
- Paid public parking lots are not fully occupied
 - Signage can help guide customers to nearby parking spaces
 - Coordinate with companies to list public parking spaces
- Appears employees primarily park off-street in parking lots
 - Parking duration shows majority of on-street parking is less than 2 hours
- Some businesses are have entered into shared parking agreements for off-site parking

Preliminary Recommendations

- **Angle parking conversion**
- **Shared parking for employees**
- **Parking District Formation**
 - Shared Parking Agreement facilitation
- **Parking District with Parking Meters**
 - Shuttle Program for Employees/Customers
 - Streetscape and pedestrian improvements
 - Pedestrian scale lighting
 - Improved crossings and sidewalks
 - Trees
 - Car Share & Charging Infrastructure
 - Gateway/Wayfinding signs



Thank you & Questions?