

Botanical Building and Gardens Phase 2 Balboa Park Committee Presentation

April 11, 2024



S P U R L O C K

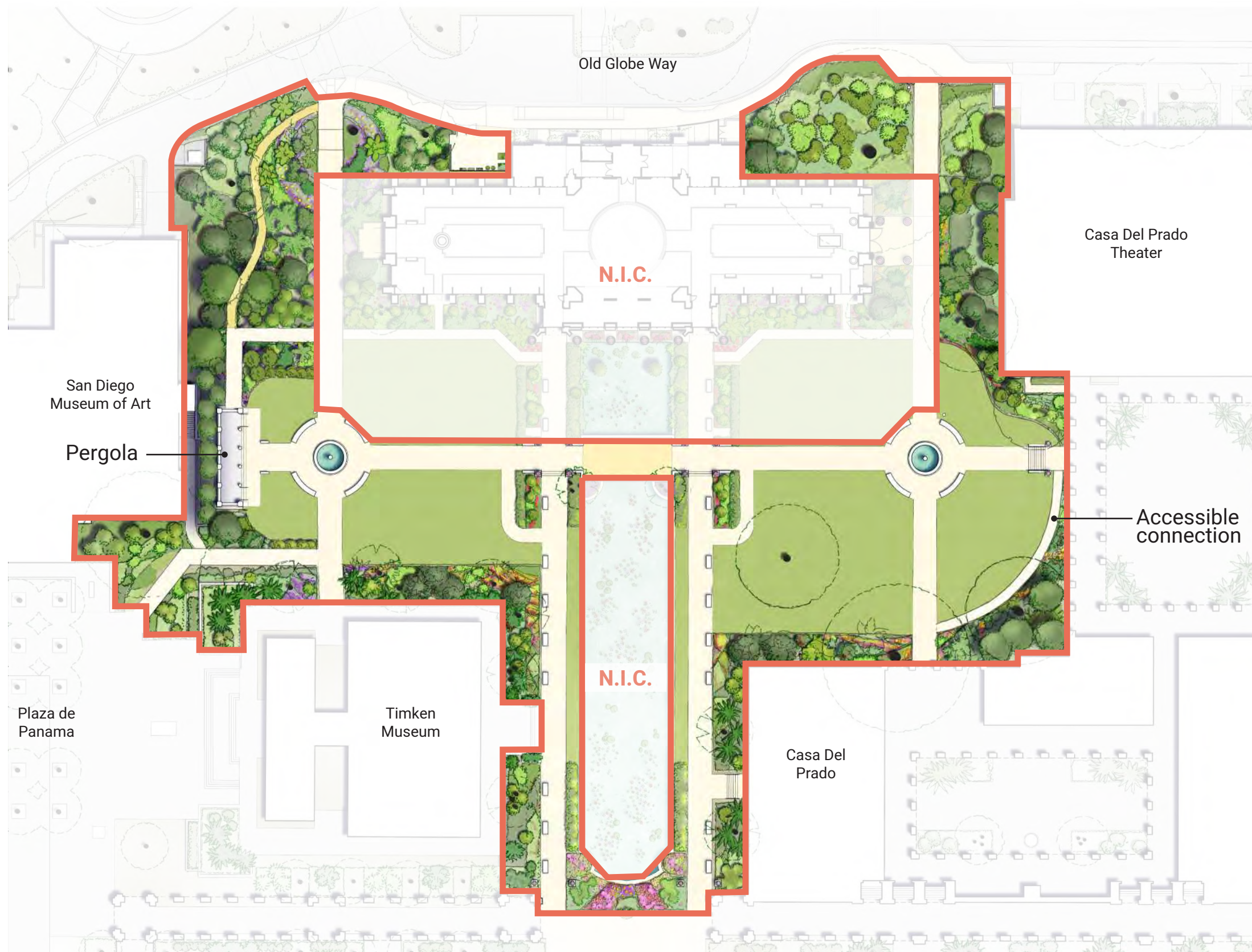
 FOREVER
BALBOA PARK

The City of
SAN DIEGO

Project Goals

- Revitalize an **iconic destination** in Balboa Park
- Celebrate Balboa Park's **cultural and recreational riches**
- Develop a memorable **series of garden stories**
- Create a **harmonious connection** between interior and exterior
- Showcase **seasonality, horticultural diversity and sustainability**
- Align with Parks and Recreation **standards** and the 1992 **Central Mesa Precise Plan**

Botanical Building Gardens - Phase 2 Scope of Work

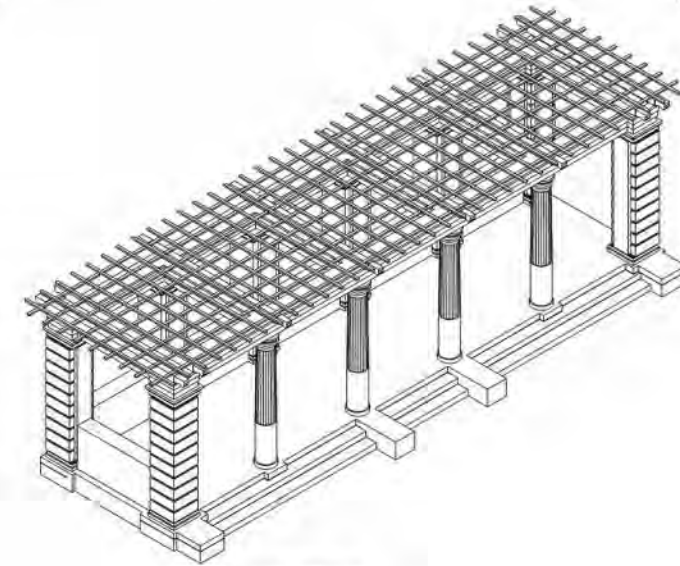
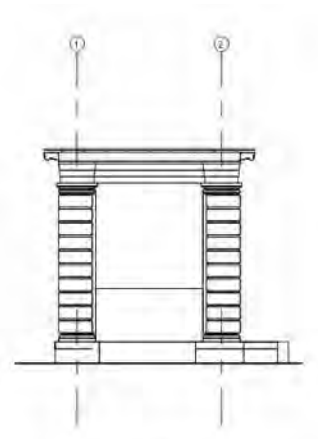
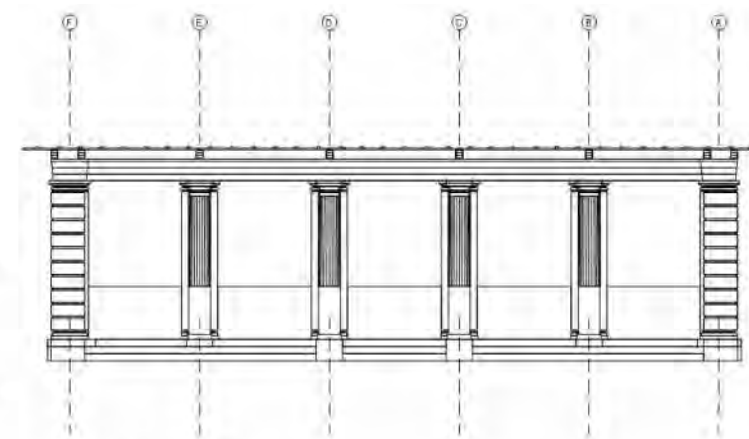
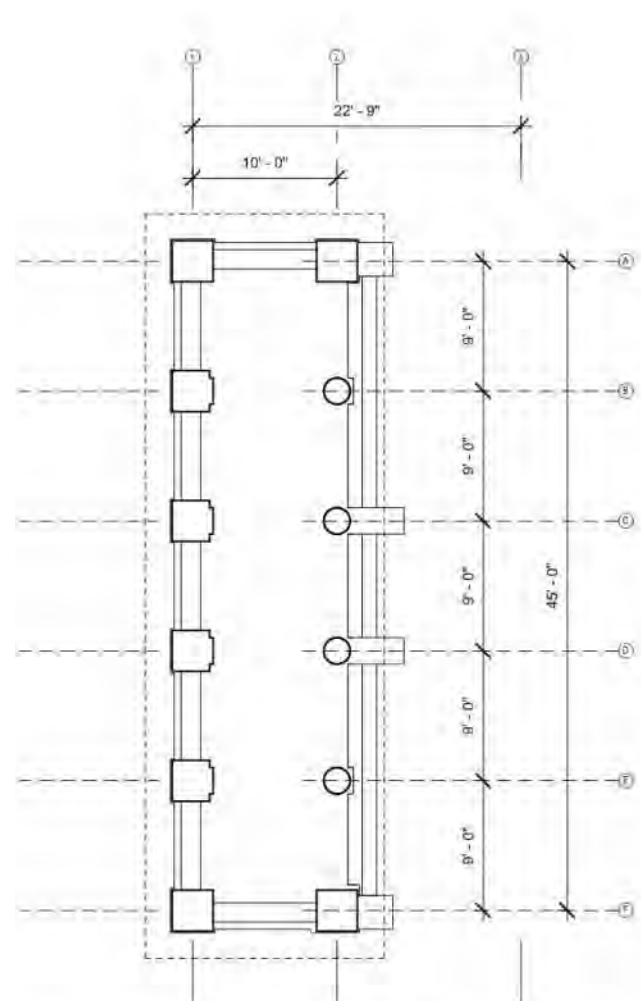
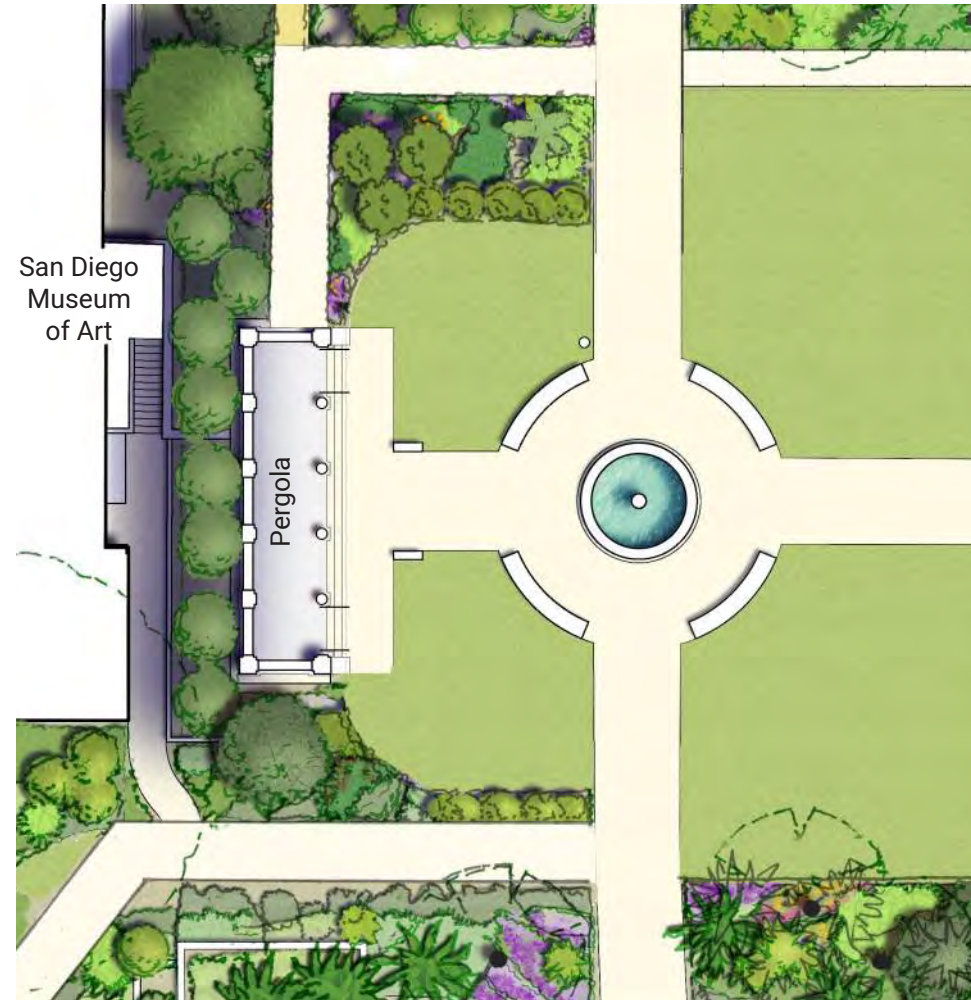


Scope of Work

- Reconstruct historic pergola
- Improve accessibility
- Refresh planting and irrigation
- Restore fountains, urns and balustrades
- Improve exterior lighting

Introduction

Botanical Building Gardens - Reconstructed Pergola



PROPOSED PERGOLA



Site Observations

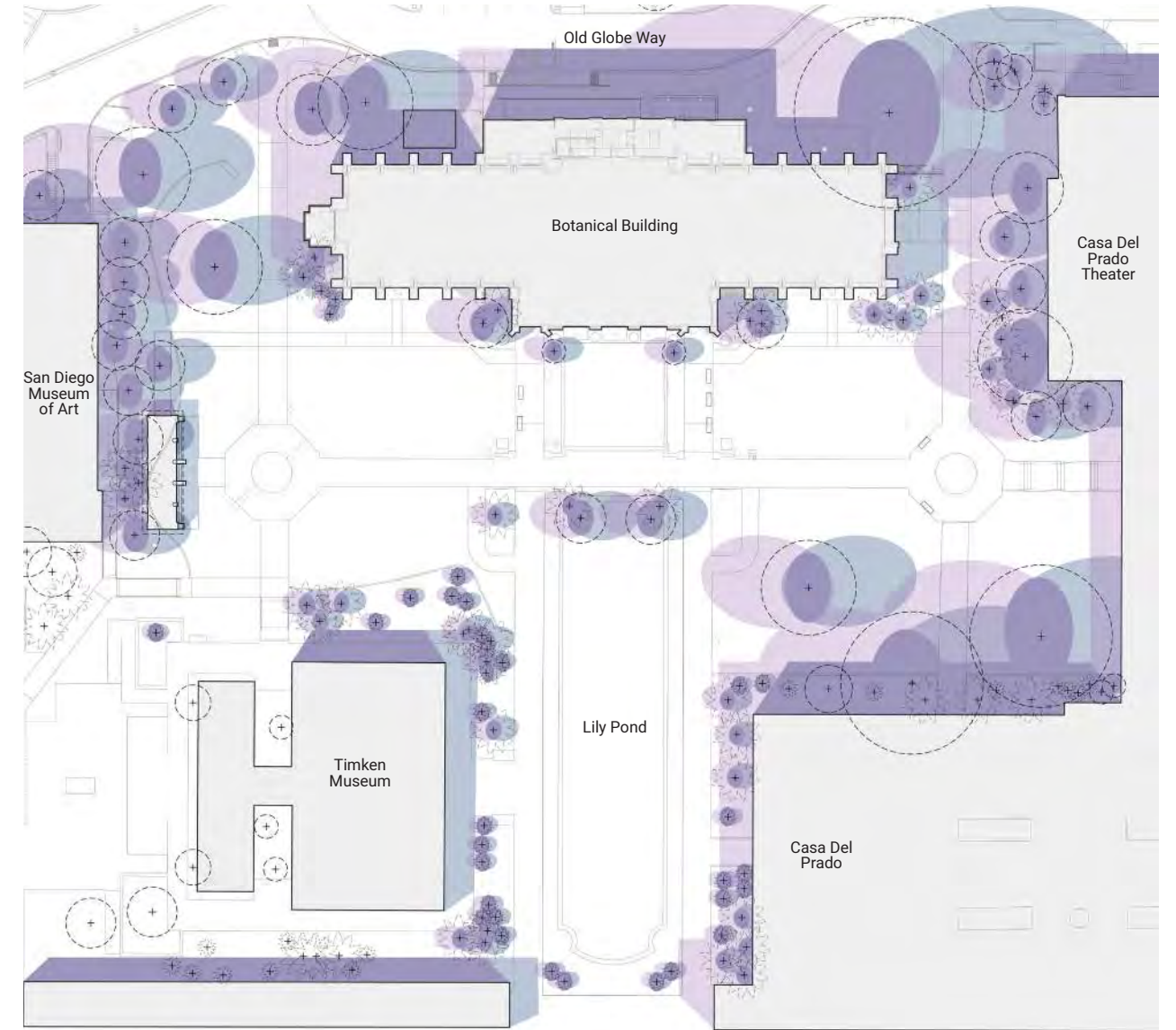
Trees



Legend

- ★ Significant Tree
(1992 Central Mesa Precise Plan)
- Coniferous Evergreen
- Canopy
- Tropical/Succulent Tree
- ★ Palm
- Tree out of Scope

Shade

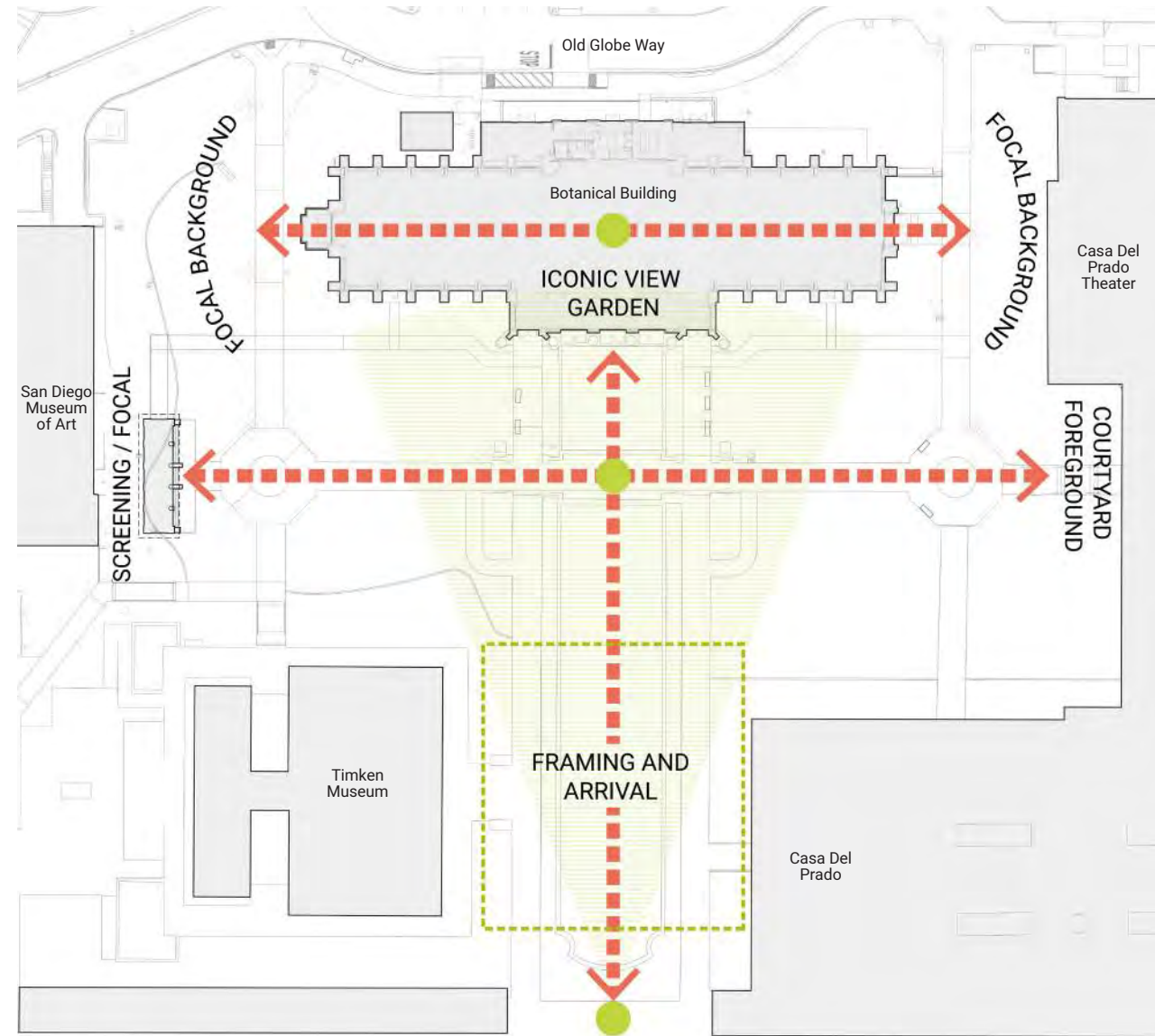


Legend

- Morning Shade
- Afternoon Shade
- Full Shade

Site Opportunities

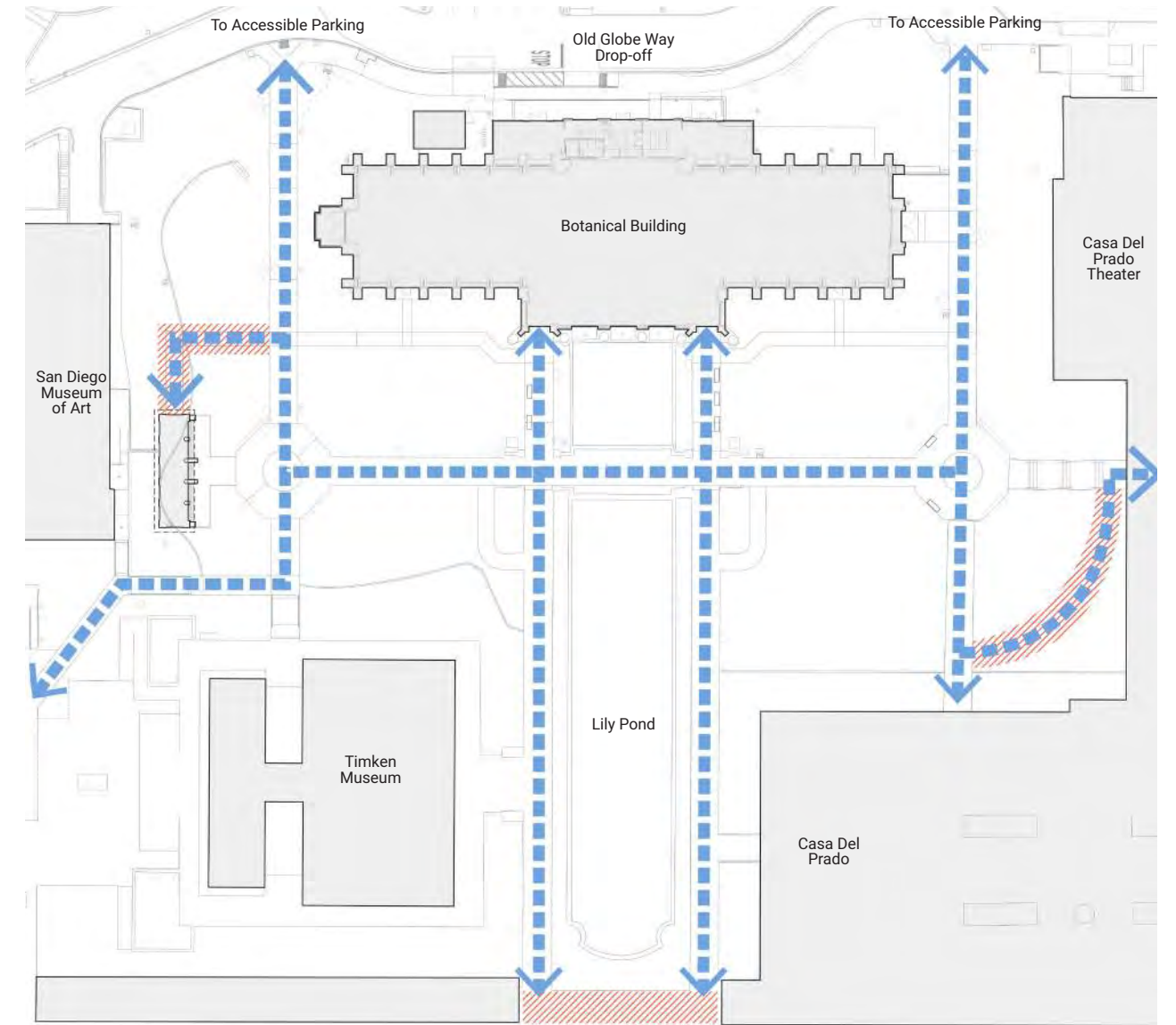
Views



Legend

- Iconic View
- Views
- Viewpoint

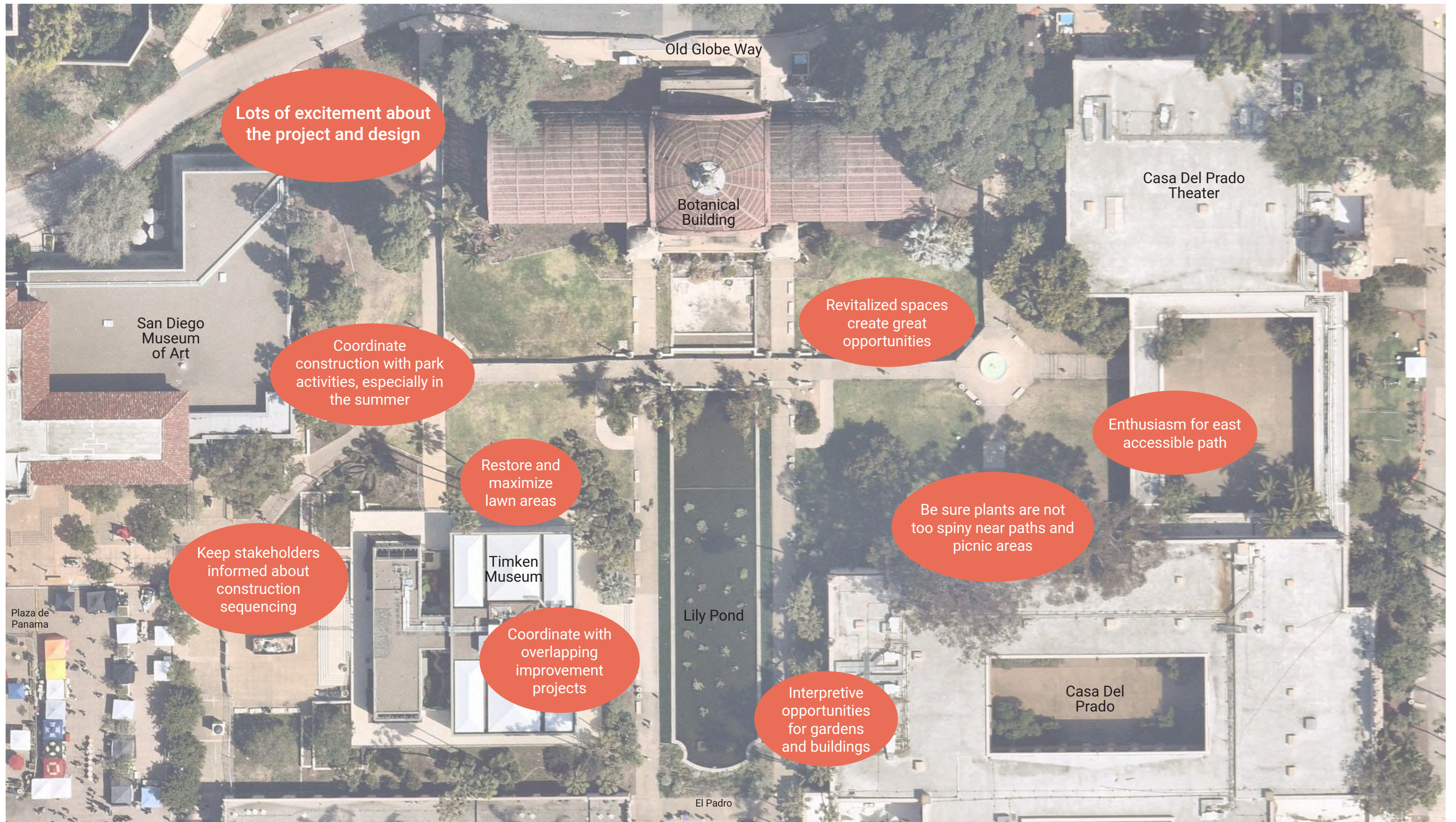
Accessible Improvements



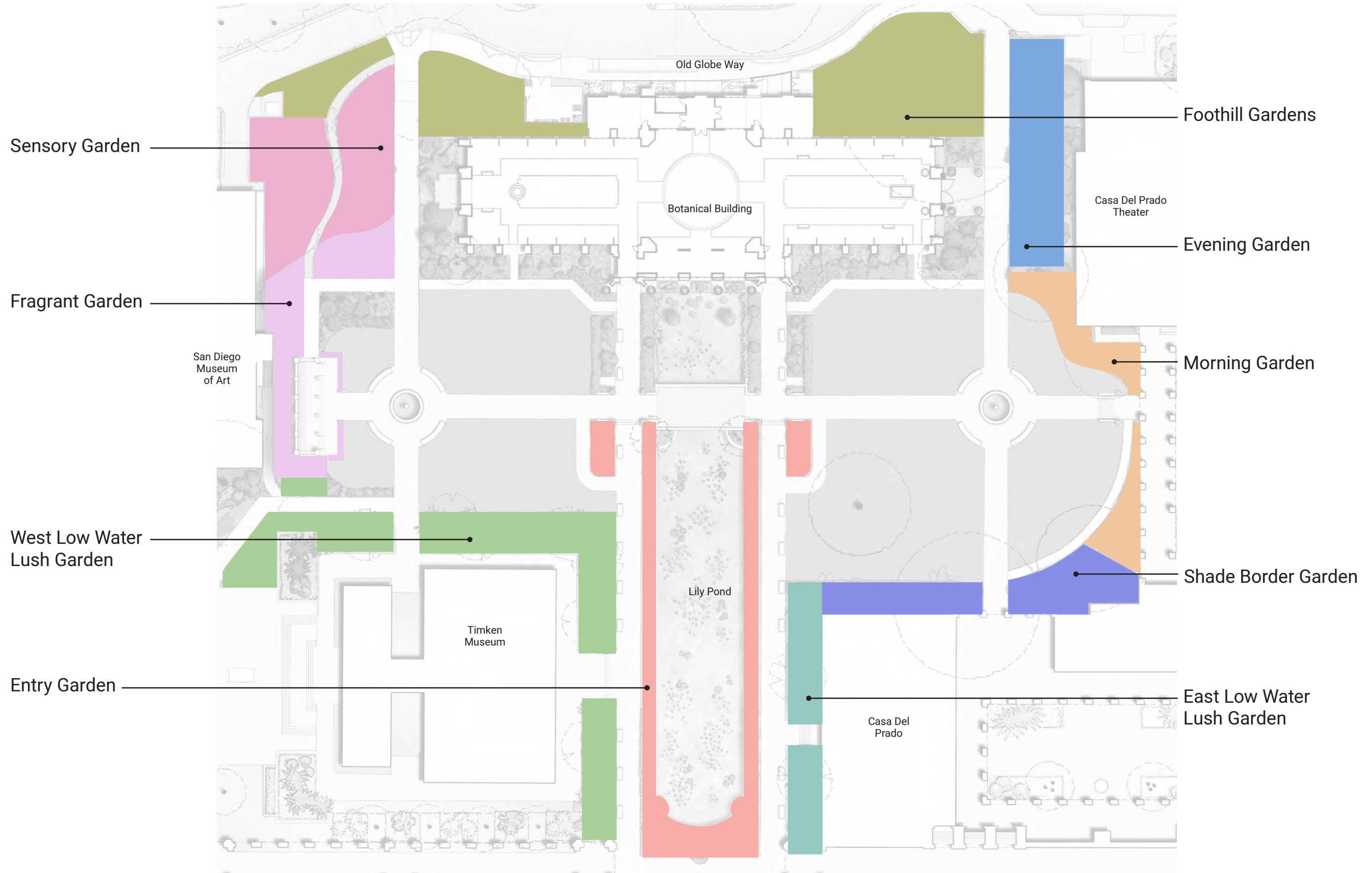
Legend

- Accessible Path of Travel
- Improvements

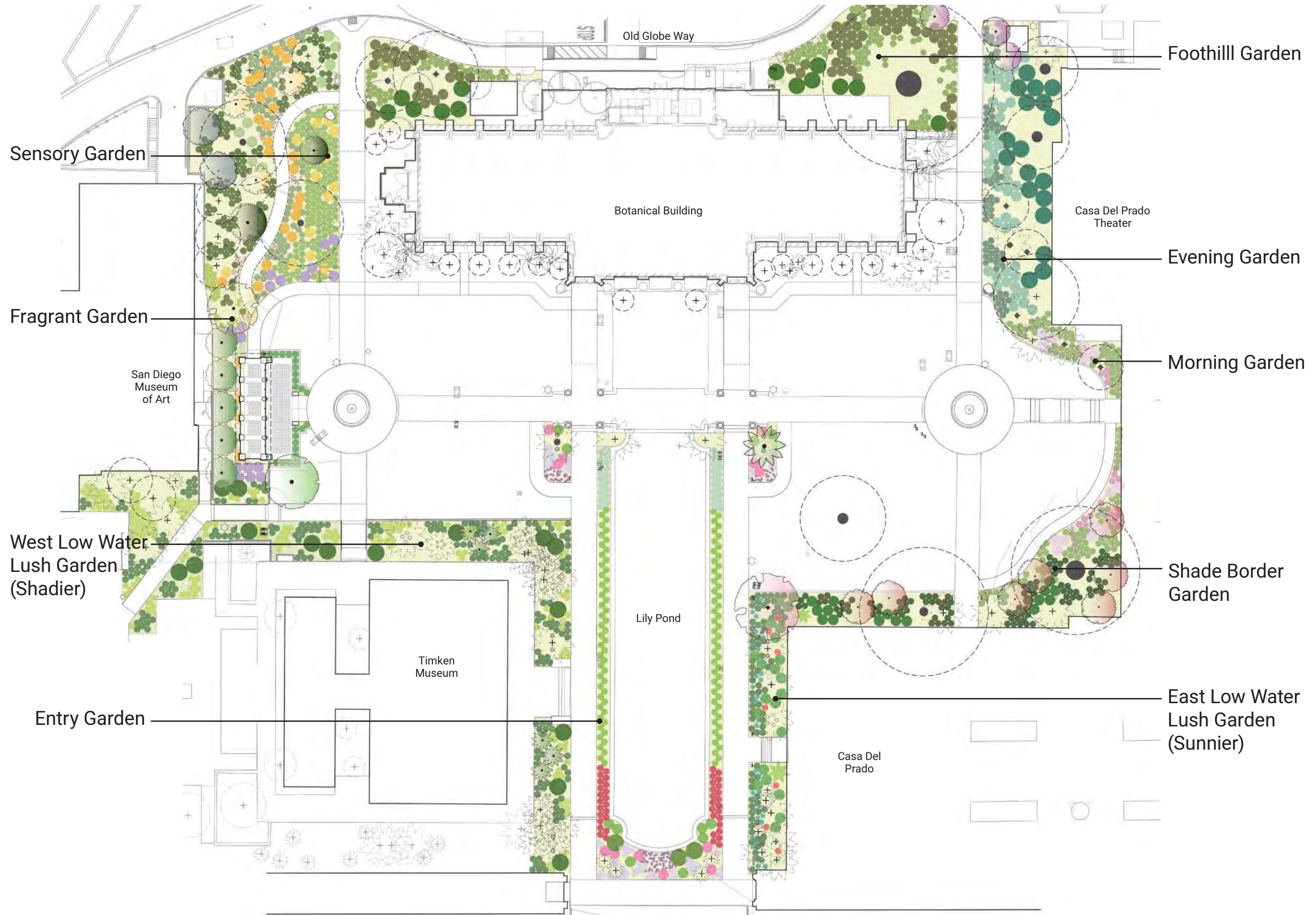
Stakeholder Feedback Summary



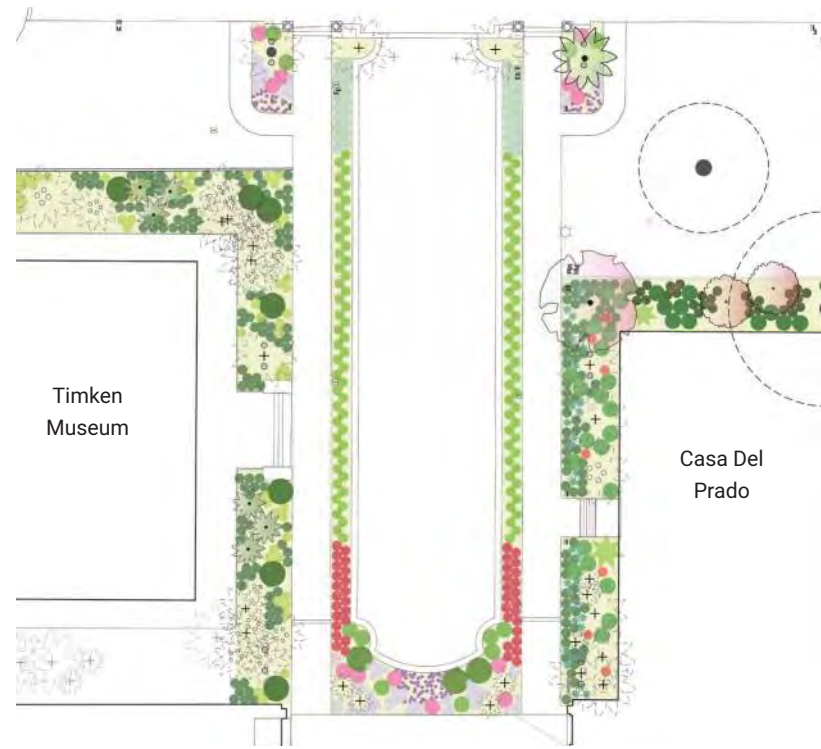
Global Mediterranean



Planting Framework



Entry Garden



KEY MAP

Character:

- Colorful
- Exuberant
- Captivating
- Color: Pinks, lime greens

Species such as:

- Agave 'Blue Flame'
- Arctotis
- Calandrinia
- Coleonema pulchellum
- Coprosma
- Cotyledon spp.
- Crassula undulatom
- Mangave spp.
- Pediolanthus
- Sanseveria cylindrica
- Zamia acuminata

Existing:

- Acoelorrhaphe wrightii
- Roystonea regia
- Chamaerops humilis var. argentea



West Low Water Lush Garden (Shady)



KEY MAP

Character:

- Sculptural
- Bold contrasts
- Playful scale
- Color: Medium and lime greens, coral accents

Species such as:

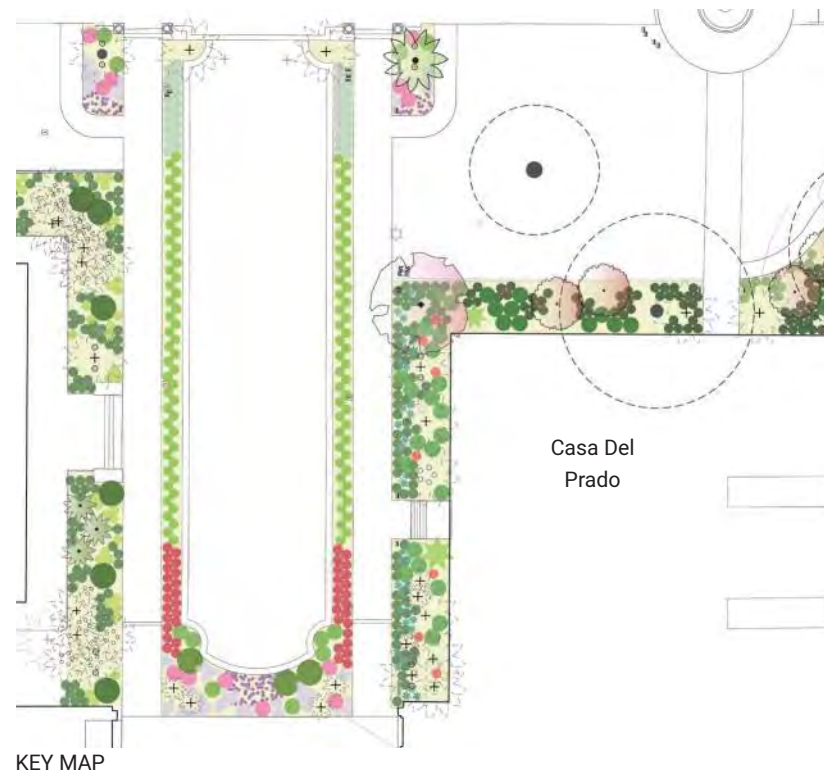
- *Agave gemniflora*
- *Aeonium* spp.
- *Aloe* spp.
- Bromeliad
- *Carex divulsa*
- *Coprosma*
- *Dioon edule*
- *Furcraea macdougallii*
- *Lomandra* 'Breeze'
- *Sanseveria*
- *Zamia acuminata*

Existing:

- *Chamaerops humilis*
- *Bismarckia nobilis*
- *Livingstonia chinensis*



East Low Water Lush Garden (Sunnier)



Character:

- Sculptural
- Spherical forms
- Textural layers
- Color: Blue greens and golden accents

Species such as:

- *Agave gemniflora*
- *Agave parryi*
- *Agave 'Blue Flame'*
- *Caesalpinia pulcherrima*
- *Crassula undulatum*
- *Dasyilirion longissima*
- *Dudleya brittonii*
- *Dyckia*
- *Euphorbia ingens*
- *Euphorbia resinifera*
- *Juniperus 'Blue Pacific'*
- *Nolina nelsonii*
- *Puya minima*
- *Senecio* spp.
- *Yucca rostrata*
- *Xanthorrhoea preisii*

Existing:

- *Acoelorrhaphe wrightii*
- *Roystonea regia*
- *Chamaerops humilis* var. *argentea*



Shade Border Garden



KEY MAP

Character:

- Lush understory
- Seasonal florals
- Textural overlays
- Color: Deep greens, maroon, red and pink

Species such as:

- Abutilon spp.
- Aeonium 'Schwartkopf'
- Anthurium plowmanii
- Acanthus mollis
- Aspidistra
- Asplenium
- Bergenia cordifolia
- Carex 'Ice Dance'
- Cercis 'Forest Pansy'
- Dombeya
- Heuchera maxima
- Salvia spathacea
- Tradescantia spathacea

Existing:

- Archontophoenix cunninghamiana
- Eucalyptus cladocalyx



Morning Garden



KEY MAP

Character:

- Airy forms
- Backlit blooms
- Shimmering textures
- Color: Silver, blonde, and lavender

Species such as:

- Artemisia 'Powis Castle'
- Boutelou 'Blonde Ambition'
- Erigeron karvanskianus
- Guara 'White Butterflies'
- Leptospermum scoparium
- Muhlenbergia capillaris
- Salvia greggii
- Verbena bonariensis
- Westringia

Existing:

- Bauhinia x blakeana
- Livistona chinensis



Evening Garden



Character:

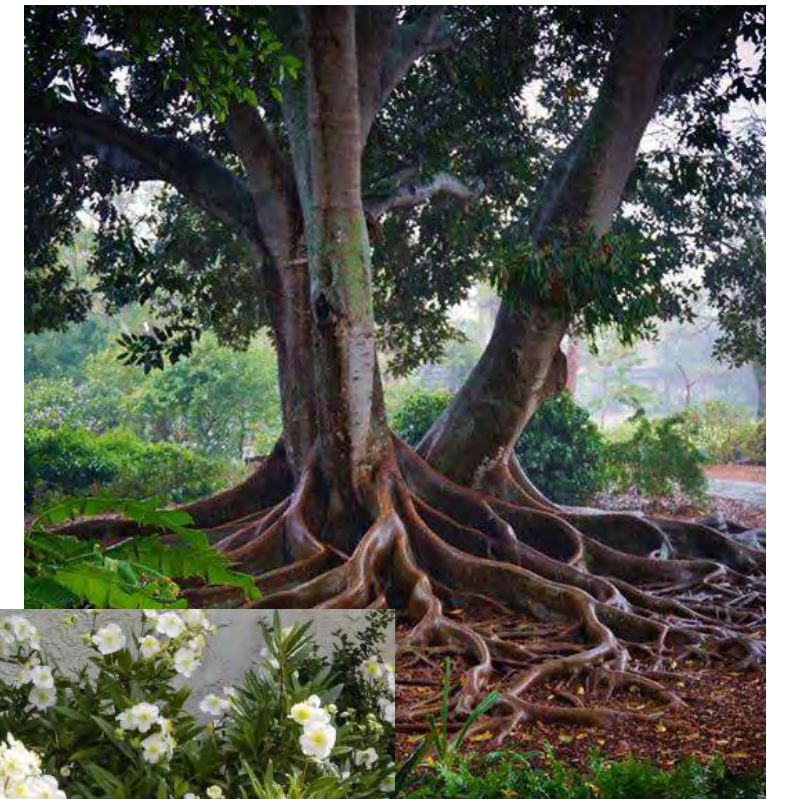
- Dappled understory
- Luminous blooms and foliage
- Sculptural forms
- Color: Dark green, silver, and white

Species such as:

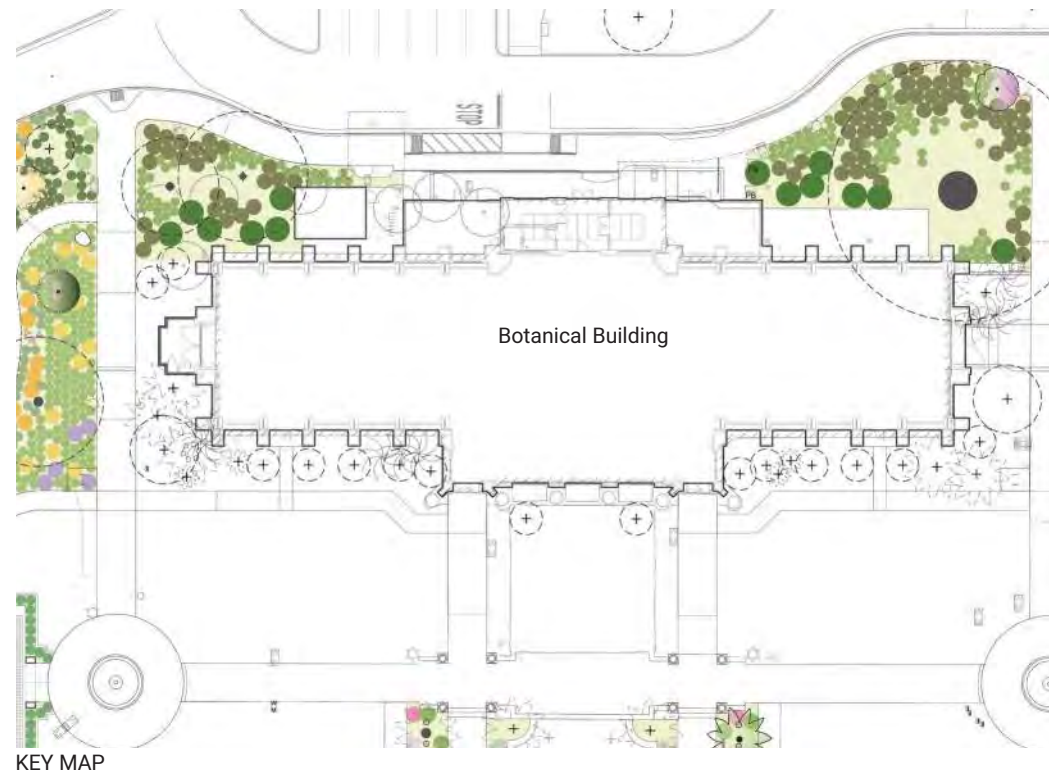
- Camellia
- Carpenteria
- Pittosporum
- Philadelphus
- Plectranthus argentus
- Azalea
- Acanthus spinosus
- Sanseveria 'Moonshine'
- Lomandra 'Platinum'
- Blechnum 'Silver Lady'
- Lamium
- Trachelospermum
- Freesia
- Iris douglasiana
- Narcissus
- Staghorn Fern (suspended overhead from trees)

Existing:

- Ficus macrophylla
- Ficus lyrata
- Livistona chinensis



Foothills Garden



Character:

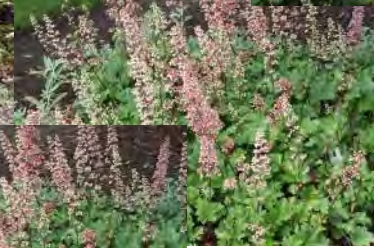
- Subdued evergreens
- Soft textures
- Contrasting drifts
- Color: Dark greens with subtle seasonal color

Species such as:

- *Heuchera maxima*
- *Myrica californica*
- *Polystichum munitum*
- *Rhamnus 'Eve Case'*
- *Ribes sanguineum* var. *glutinosum*
- *Symphoricarpos albus* var. *laevigatus*
- *Woodwardia fimbriata*

Existing:

- *Ficus microphylla*
- *Quercus tomentella*
- *Cedrus deodara*



Sensory Garden



Character:

- Tactile forms
- Rustling foliage
- Playful color drifts
- Color: Gray blue green, sulphur yellow, and orange

Species such as:

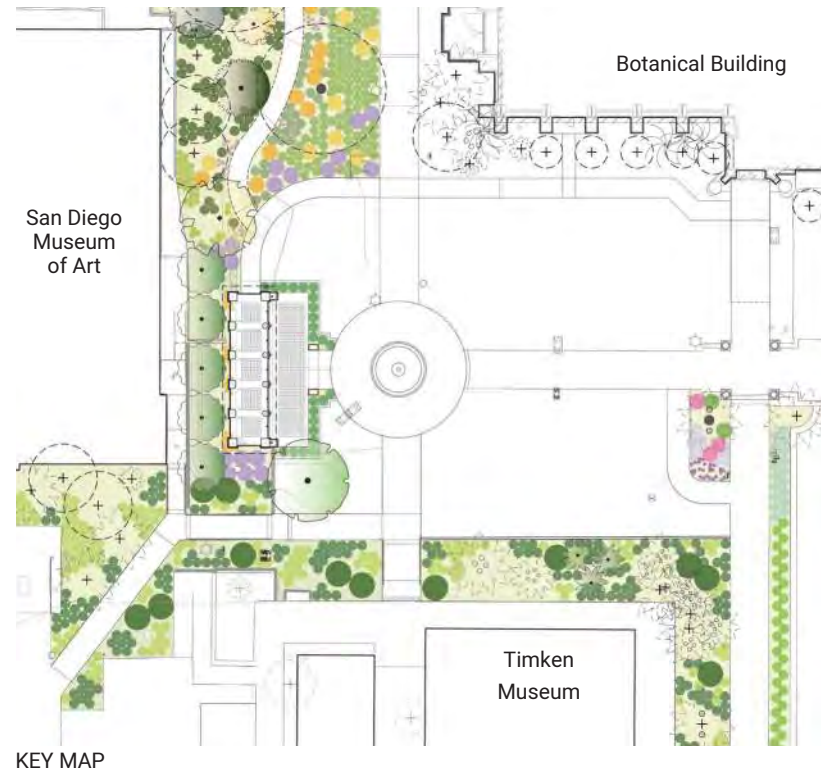
- Aloe marlothii
- Acacia cultriformis
- Carex divulsa
- Heteromeles 'Davis Gold'
- Iris douglasiana
- Lomandra 'Breeze'
- Mahonia 'Soft Caress'
- Polystichum munitum
- Rhamnus 'Eve Case'

Existing:

- Pinus canariensis
- Cedrus deodara



Fragrance Garden



Character:

- Aromatic
- Romantic
- Enveloping
- Color: Lavender, cream, and gold

Species such as:

- Jasminium
- Lavandula 'Meerlo'
- Rosmarinus 'Boule'
- Salvia spp.
- Carex divulsa
- Cistus
- Solandra maxima



Thank You!

