

# Botanical Building and Gardens Phase 2 Concept Design Workshop

February 1, 2024



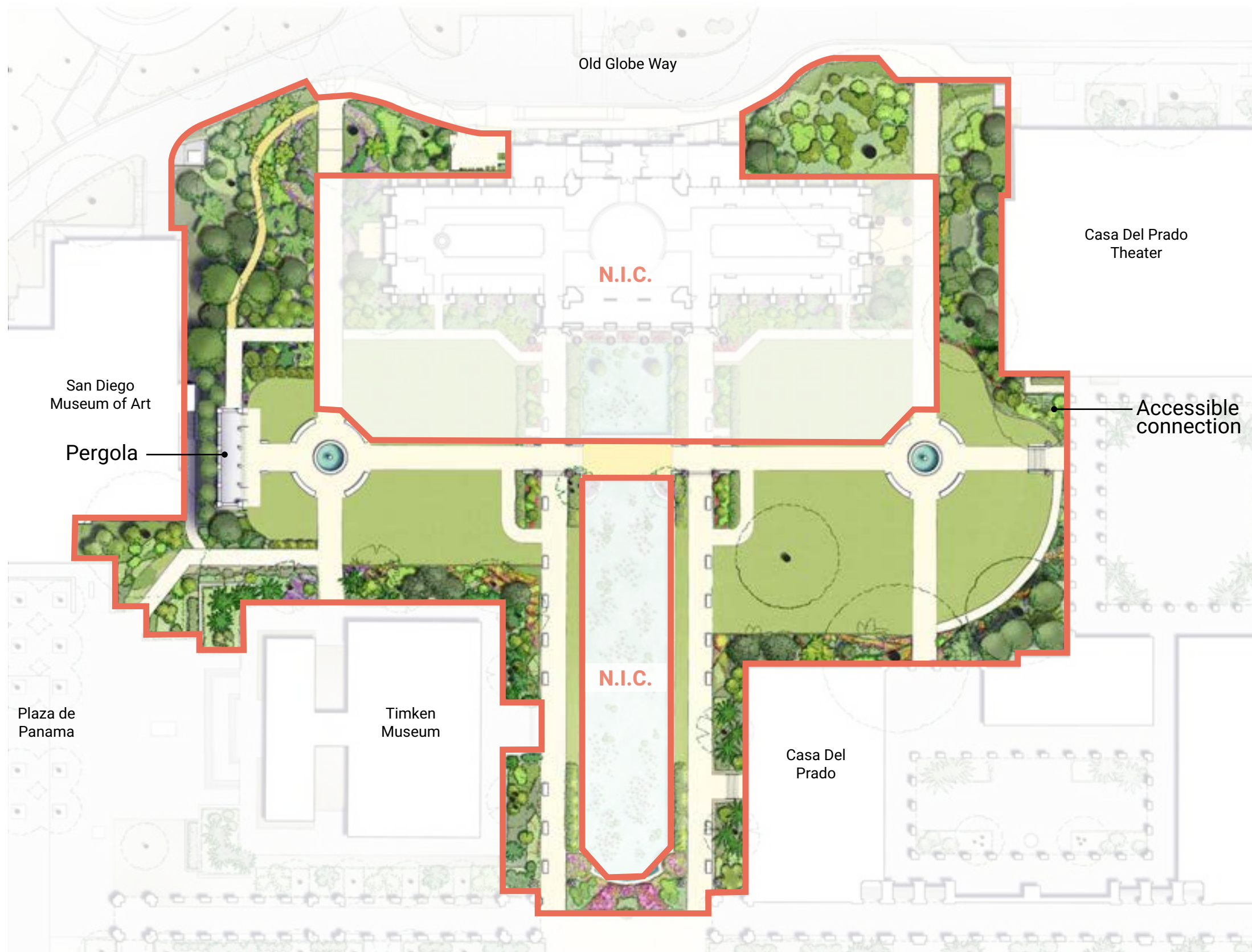
S P U R L O C K



# Project Goals

- Revitalize an **iconic destination** in Balboa Park
- Celebrate Balboa Park's **cultural and recreational riches**
- Develop a memorable **series of garden stories**
- Create a **harmonious connection** between interior and exterior
- Showcase **seasonality, horticultural diversity and sustainability**
- Align with Parks and Recreation **standards** and the 1992 **Central Mesa Precise Plan**

# Botanical Building Gardens - Phase 2 Scope of Work

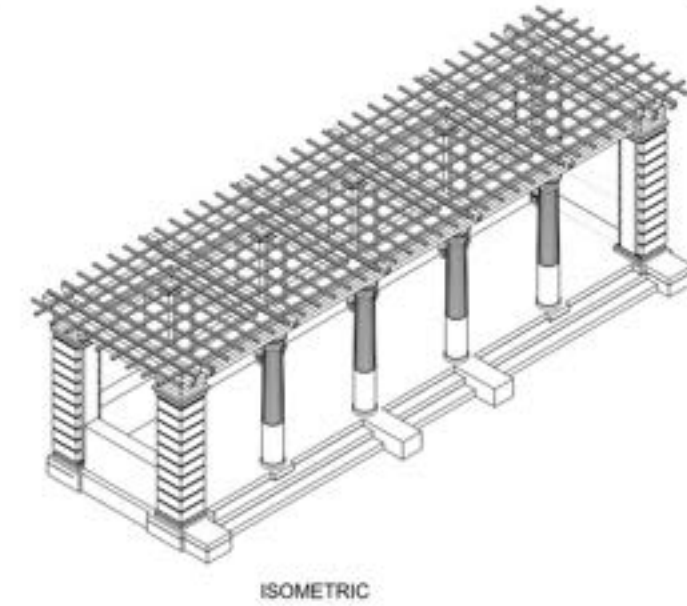
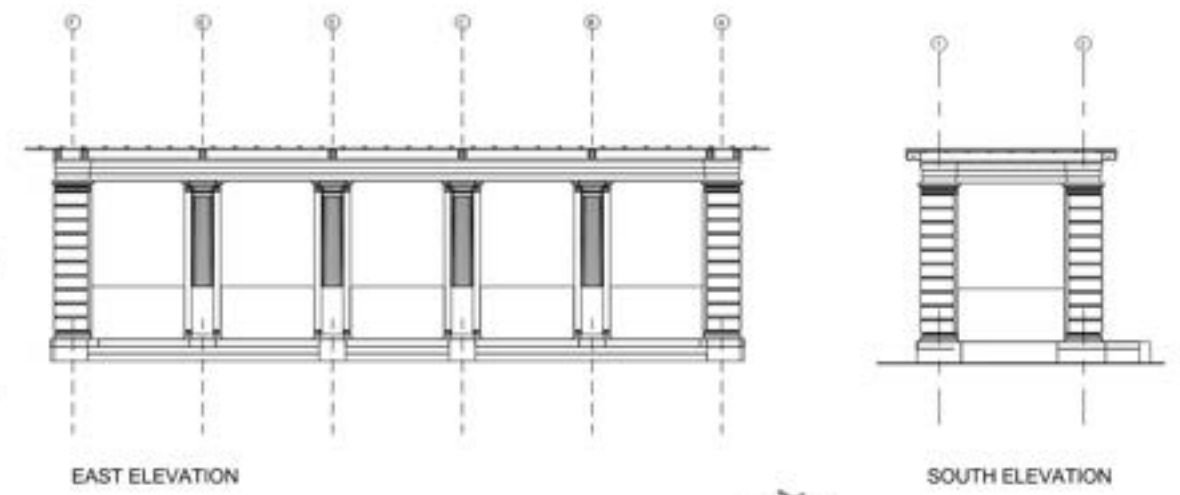
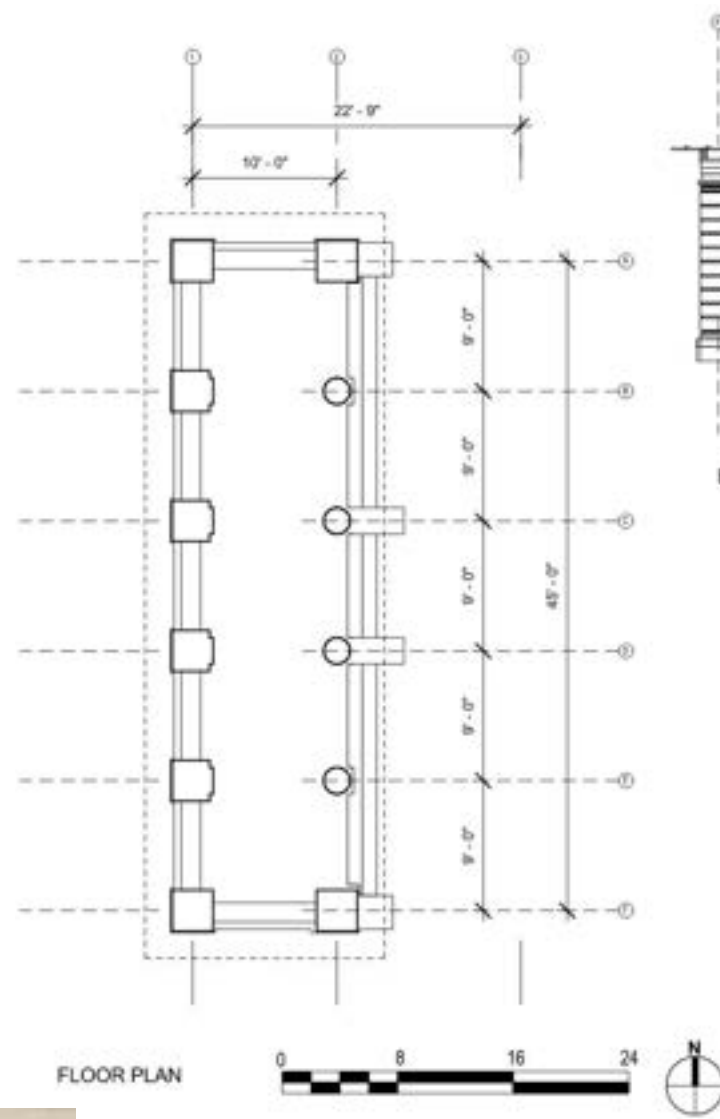


## Scope of Work

- Reconstruct historic pergola
- Improve accessibility
- Refresh planting and irrigation
- Restore fountains, urns and balustrades
- Improve exterior lighting

Introduction

# Botanical Building Gardens - Reconstructed Pergola



PROPOSED PERGOLA



# Site Observations

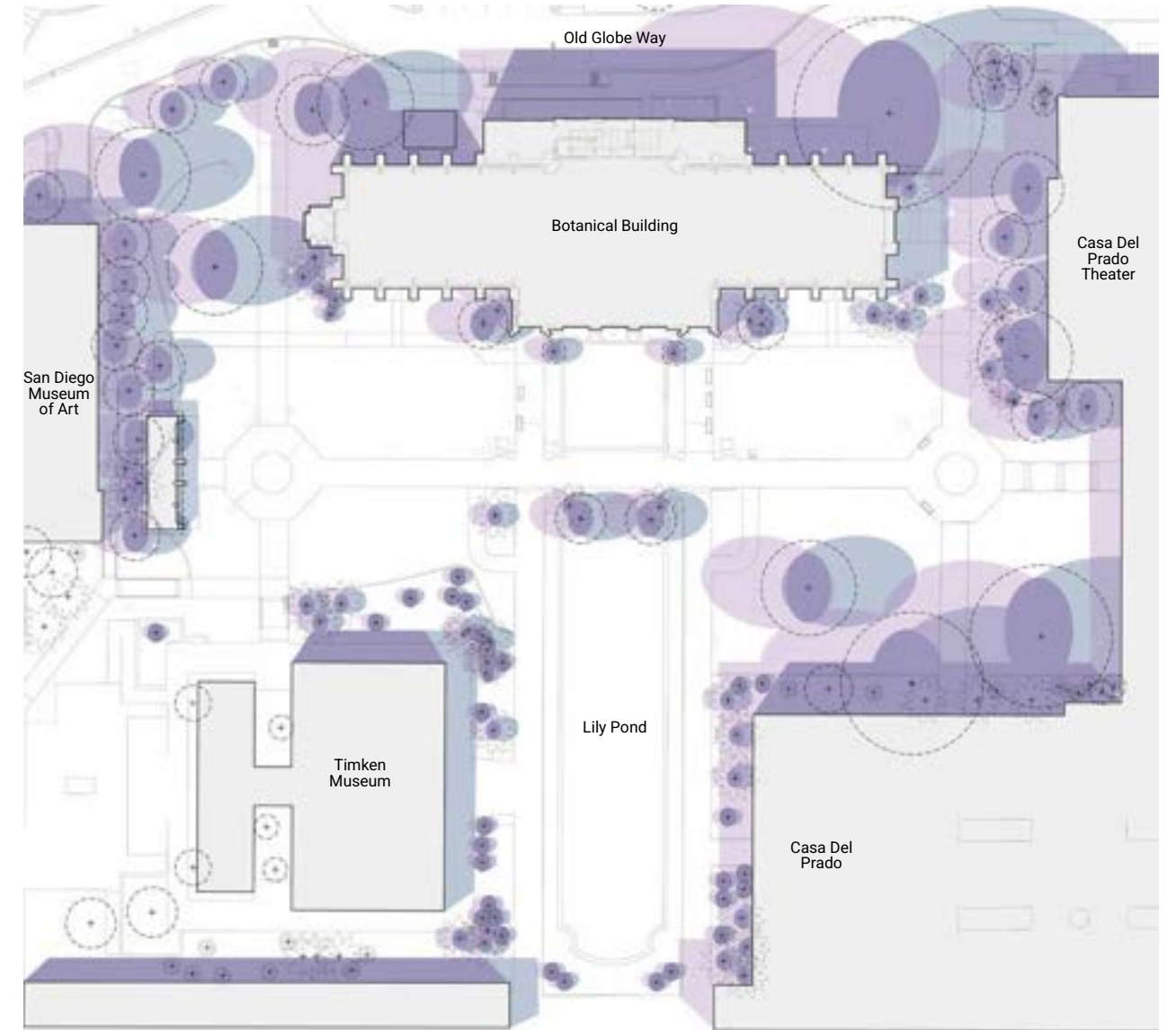
## Trees



### Legend

- ★ Significant Tree (1992 Central Mesa Precise Plan)
- ⊕ Coniferous Evergreen
- ⊕ Canopy
- ⊕ Tropical/Succulent Tree
- 🌴 Palm
- ⊕ Tree out of Scope

## Shade

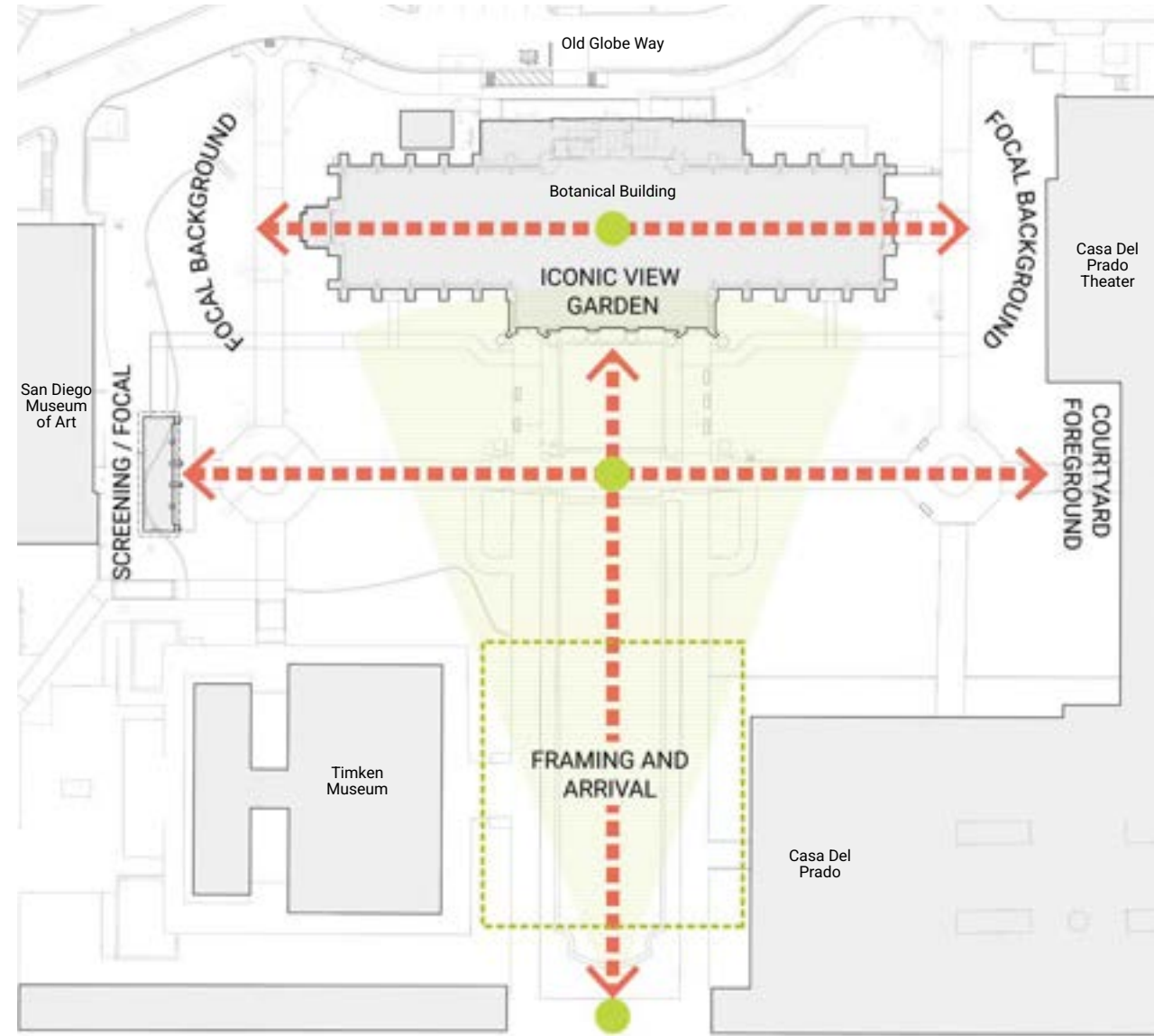


### Legend

- ☐ Morning Shade
- ☐ Afternoon Shade
- ☐ Full Shade

# Site Opportunities

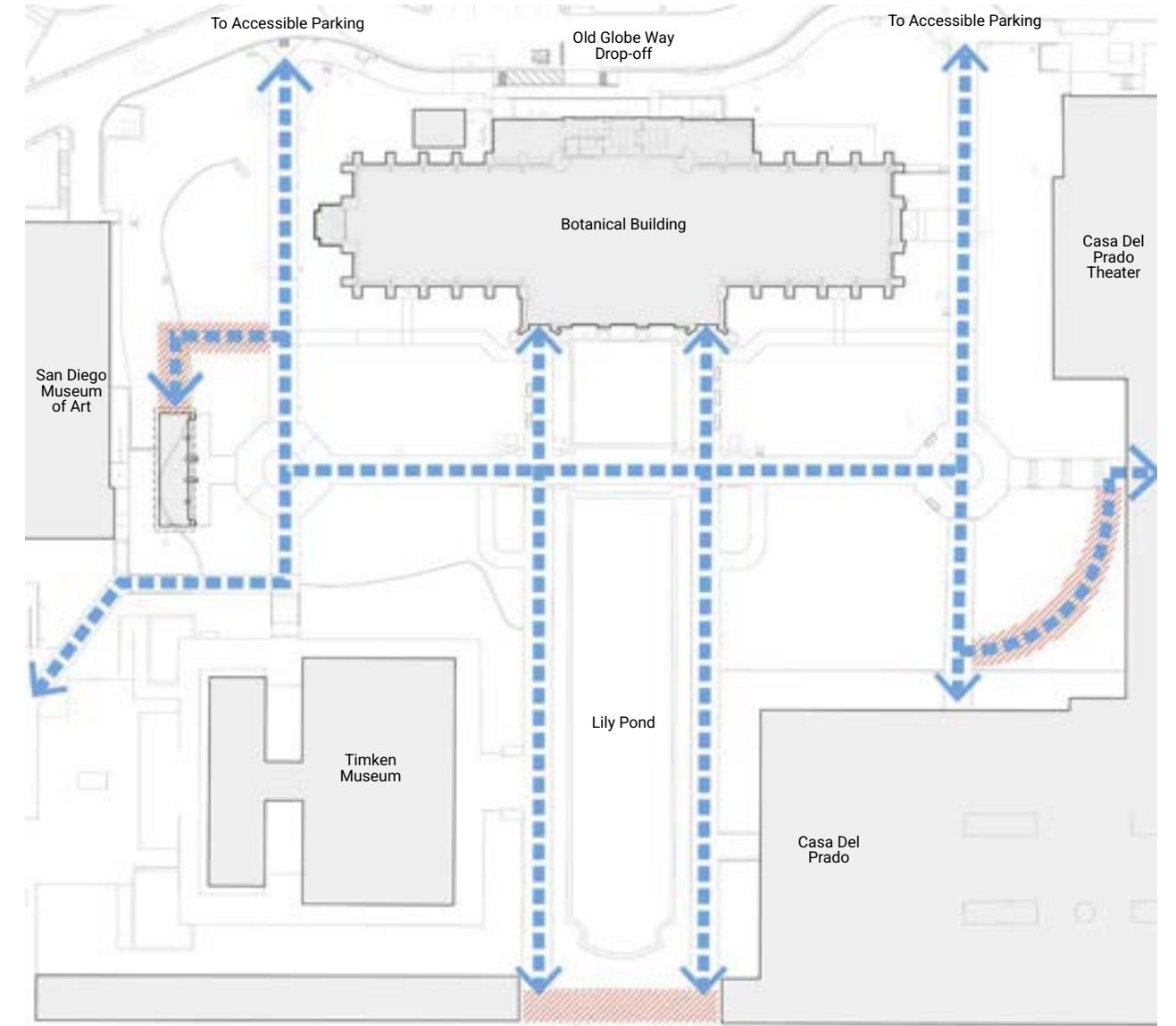
## Views



### Legend

- Iconic View
- Views
- Viewpoint

## Accessible Improvements



### Legend

- Accessible Path of Travel
- Improvements

# Design Concept - Floral Abundance



Sensory Garden



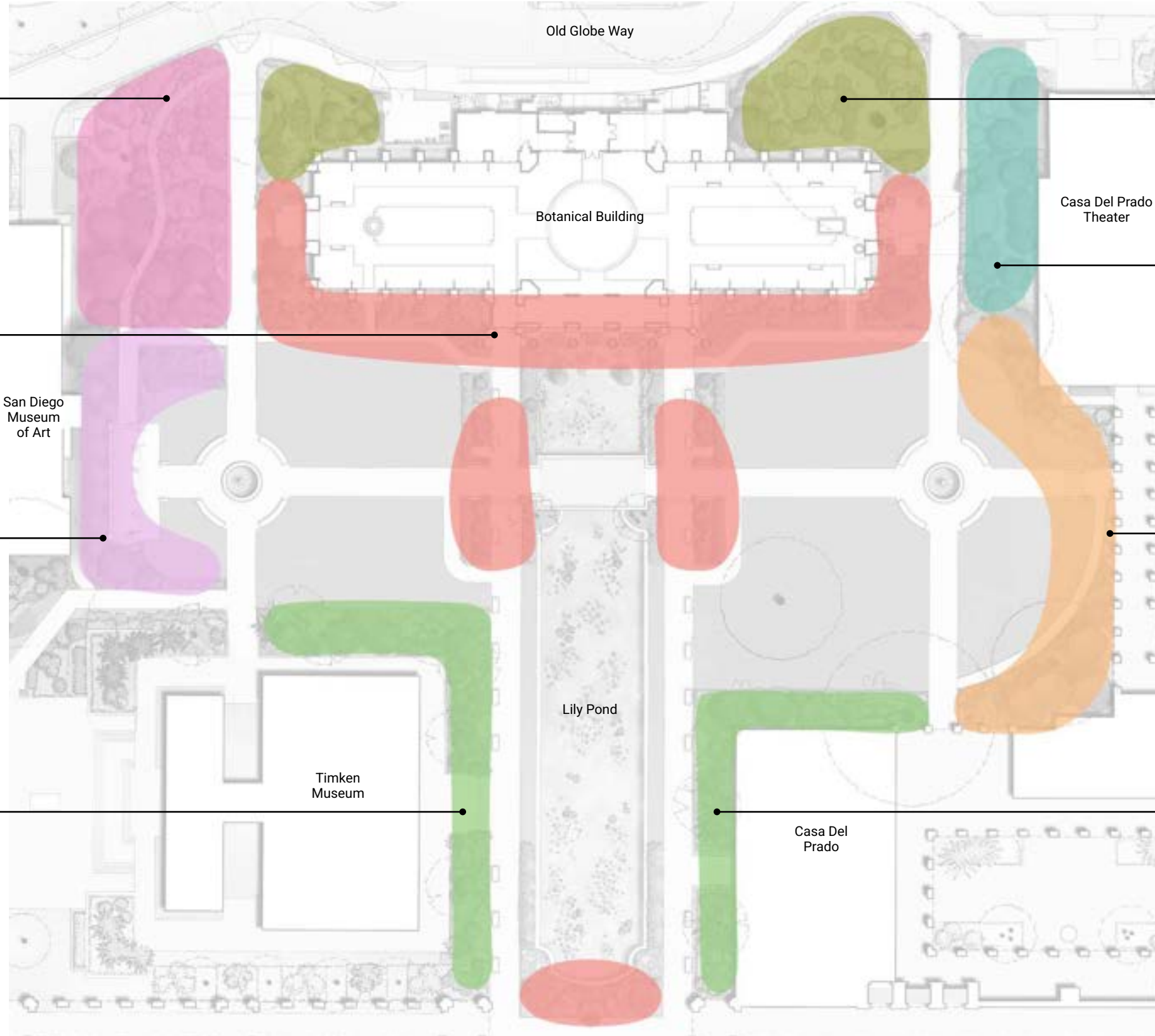
Iconic/  
Exuberant Garden



Fragrant Garden



Low Water Lush Garden



California Native Gardens



Evening Garden

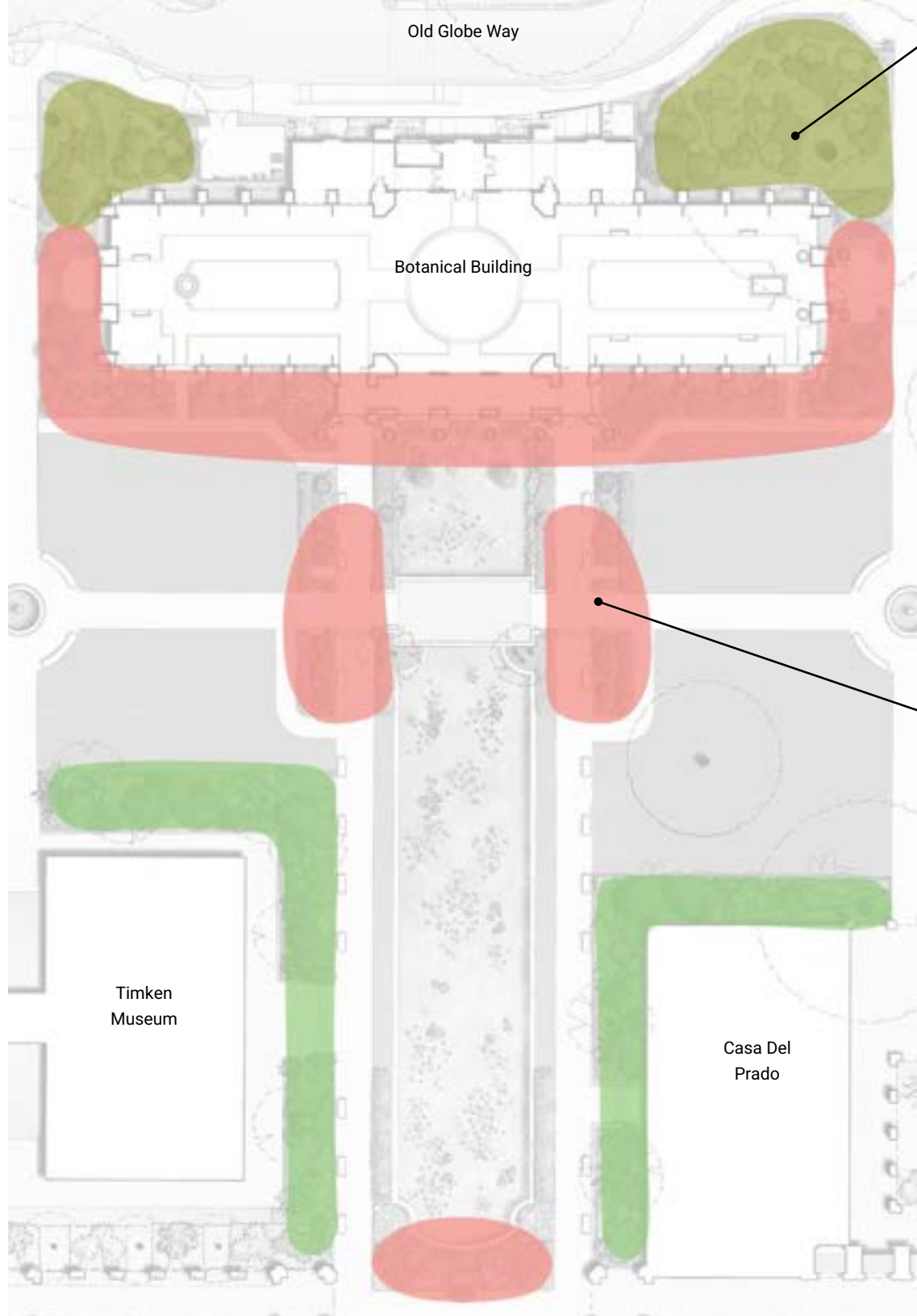


Morning Garden



Low Water Lush Garden

# Global Mediterranean - North Central Conceptual Plant Palette



## California Native Garden

Trees



(E) *Ficus macrophylla*



*Cedrus deodara-ex*



*Cercis occidentalis*

- Native
- Dry shade
- Sustainable

Understory



*Heuchera maxima*



*Woodwardia fimbriata*



*Salvia spathacea*



*Mahonia repens*



*Carpenteria californica*



*Rhamnus californica*  
'Eve Case'

## Iconic/Exuberant Garden

Trees



(E) *Rhophidepis indica*



(E) *Acoelorrhaphe wrightii*



(E) *Archontophoenix alexandrae*

- Display
- Colorful
- Formal

Understory



*Coprosma repens*



*Agave attenuata*  
'Ray of Light'



*Echium wildpretii*



*Agave parryi*



*Aloe plicatilis*



*Euphorbia Blackbird*



# Global Mediterranean - West Conceptual Plant Palette

## Sensory Garden

- Tactile
- Immersive
- Soothing

### Trees



(E) Pinus canariensis-



Quercus tomentella

### Understory



Stachys byzantina



Phlomis purpurea



Punica granatum 'Nana'



Aloe vera



Rosmarinus officinalis 'Boule'



Fragaria chiloensis

## Fragrant Garden

- Aromatic
- Relaxing
- Seasonal

### Trees



(E) Washingtonia filifera



(E) Pinus canariensis

### Understory



Wisteria floribunda



Pelargonium fragrans



Tibouchina urvilleana



Citrus sinensis 'Washington Navel'



Melissa officinalis



Trachelospermum jasminoides



# Global Mediterranean - East Conceptual Planting Palette



## Evening Garden

Trees



(E) *Washingtonia filifera*



(E) *Ficus lyrata*

Understory



*Pittosporum tobira*  
'Creme de Mint'



*Acanthus* 'Whitewater'



*Gardenia augusta* 'Veitchii'



*Plectranthus argentatus*  
'Longwood Silver'



*Kalanchoe bracteata*



*Impatiens* 'SunPatiens  
Compact White'

- Silver
- Variegated foliage
- Luminous

## Morning Garden

Trees



(E) *Ficus macrophylla*



(E) *Bauhinia purpurea*



(E) *Eucalyptus cladocalyx*



(E) *Archontophoenix alexandrae*

Understory



*Muhlenbergia capillaris*  
'White Cloud'



*Guara lindheimeri*



*Leptospermum hybrid*  
'Pink Cascade'



*Teucrium fruticans*



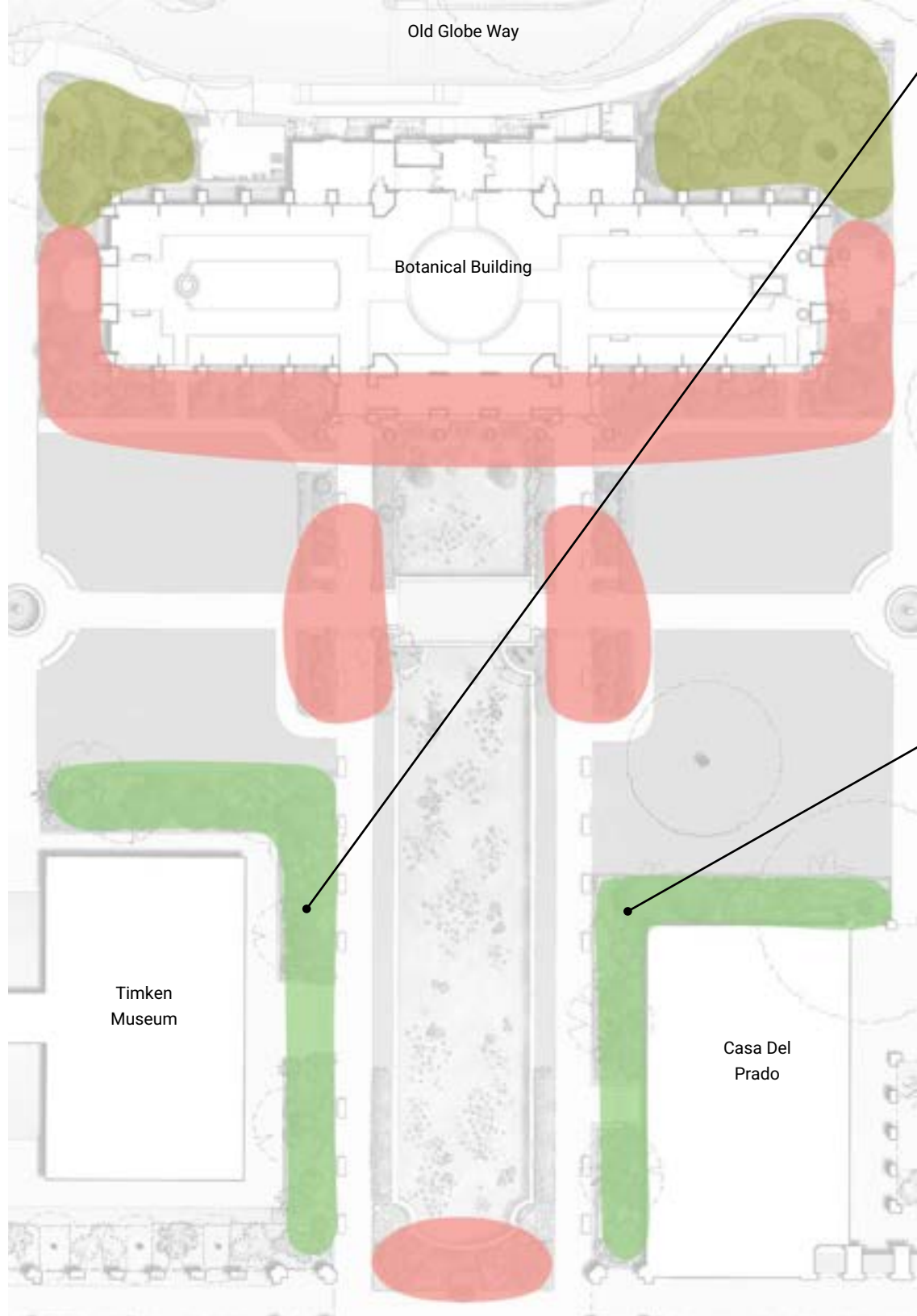
*Salvia apiana*



*Westringia fruticosa*  
'Morning Light'

- Floral
- Soft
- Backlit

# Global Mediterranean - South Central Conceptual Plant Palette



## Low Water Lush Garden (Shadier)

Trees



*Chamaerops humilis*



(E) *Washingtonia robusta*

Understory



*Dasylirion wheeleri*



*Vriesea hieroglyphica*



*Fucrea foetida*



*Philodendron*



*Encephalartos villosus*



*Pittosporum tobira*

- Texture
- Bold
- Modern

## Low Water Lush Garden (Sunnier)

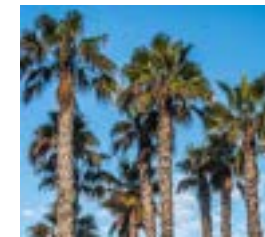
Trees



*Aloe barberae*



*Dracaena draco*



(E) *Washingtonia robusta*



(E) *Brahea armata*

Understory



*Kalanchoe orgyalis*



*Agave attenuata*



*Aloe 'Erik the Red'*



*Westringia fruticosa*



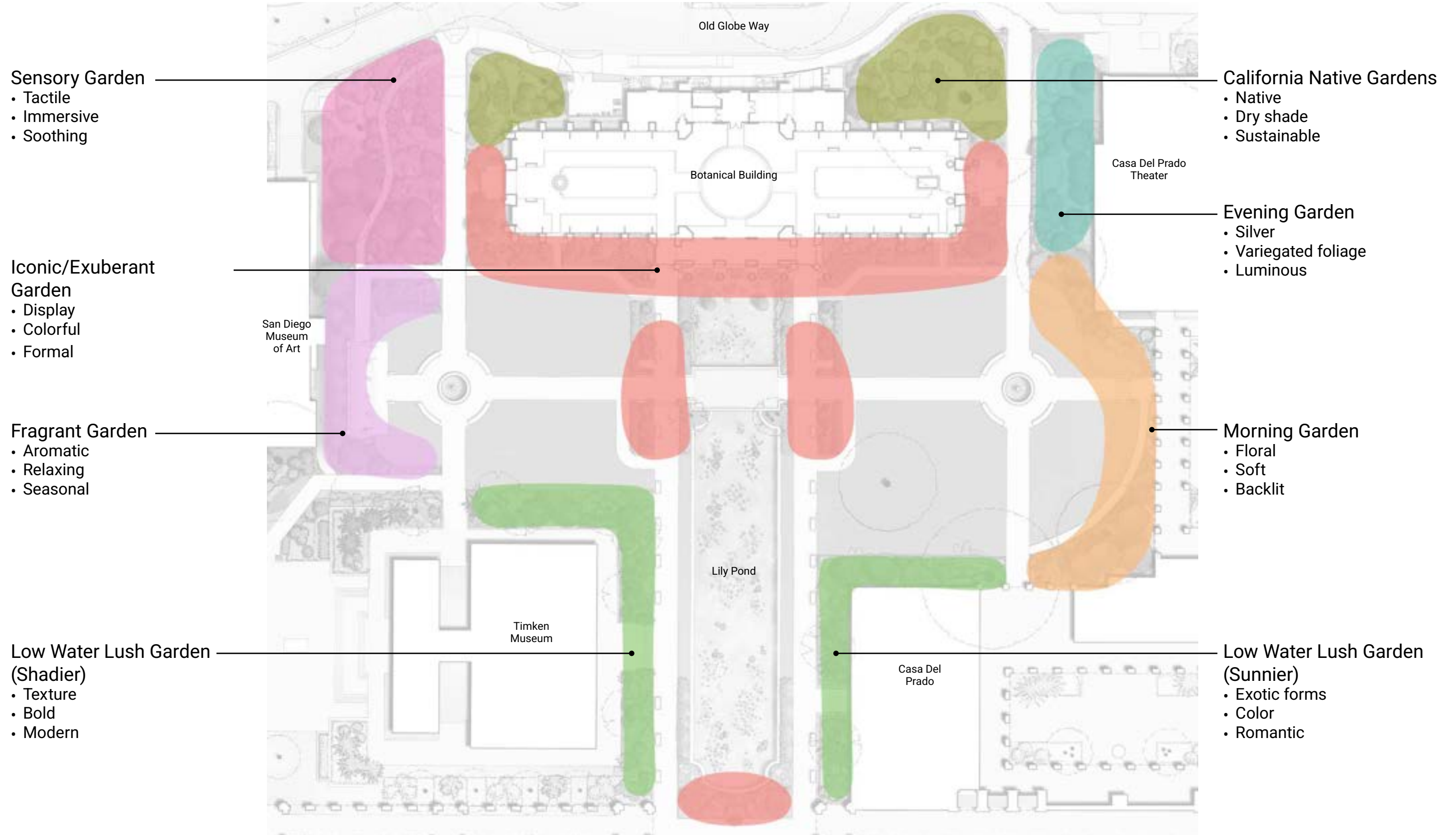
*Aloe thraskii*



*Agave geminiflora*

- Exotic forms
- Color
- Romantic

# Discussion



Thank You!

