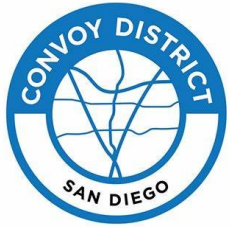


Community Parking District Establishment – Kearny Mesa and San Ysidro

Mobility Board

November 1, 2023

Community Parking Districts (CPD) Proposals



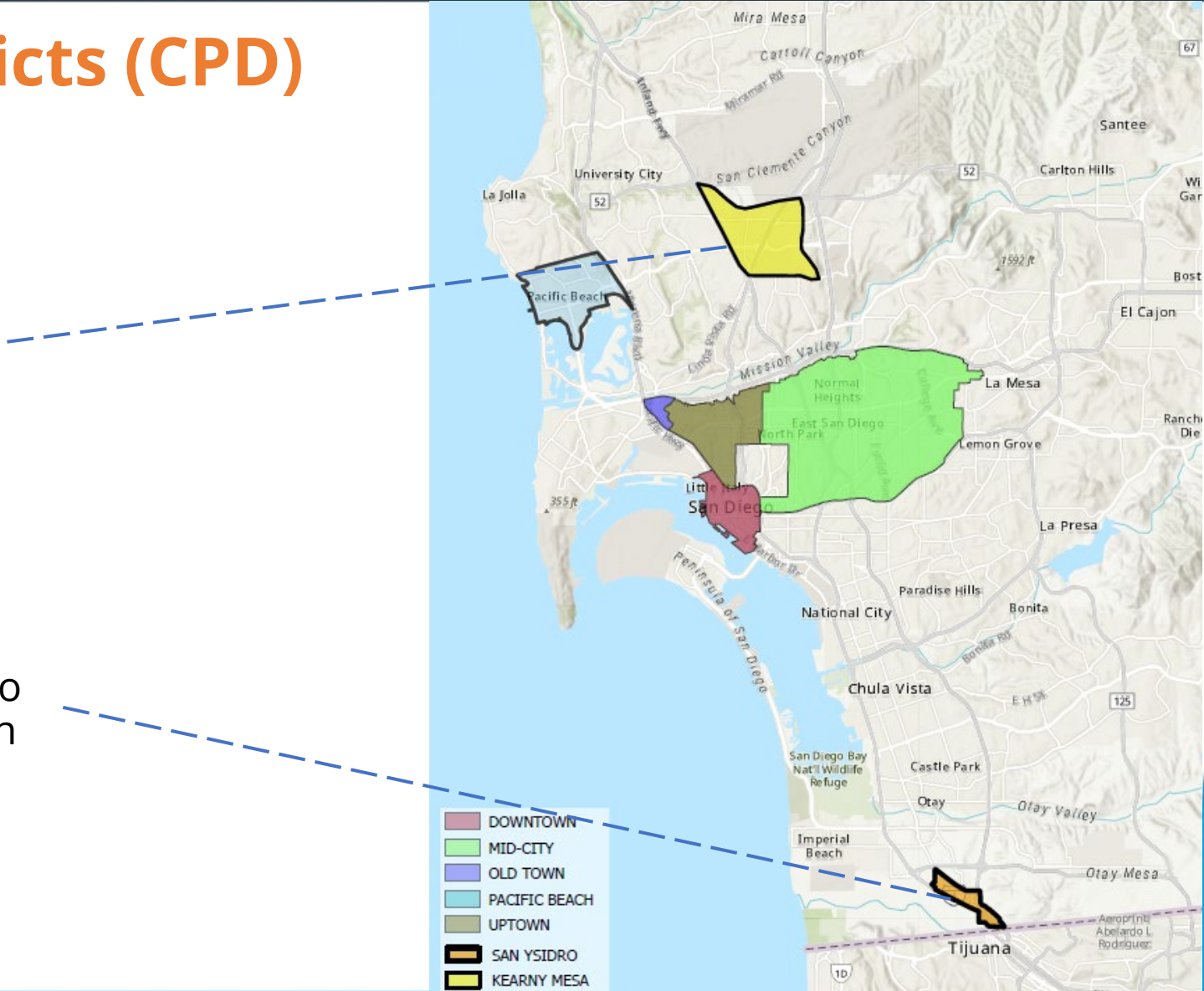
Kearny Mesa CPD

Proposal by the Convoy District Partnership



San Ysidro CPD

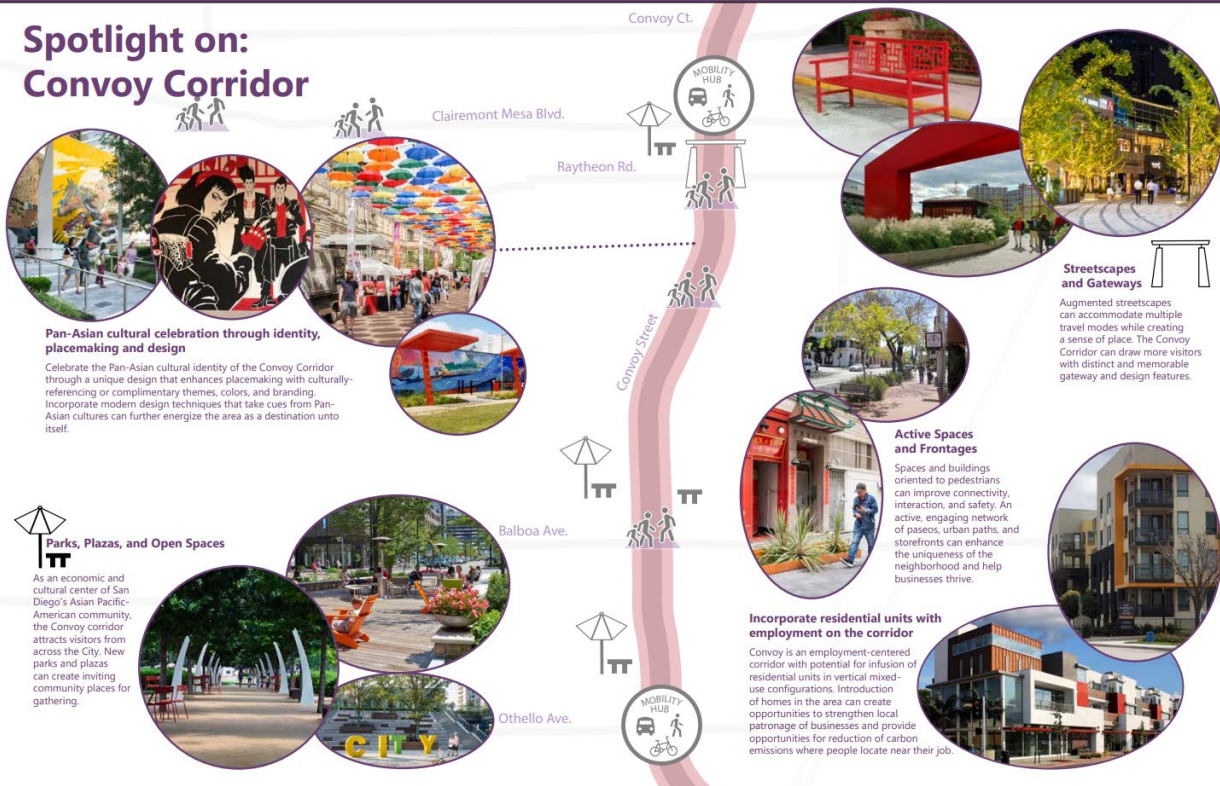
Proposal by the San Ysidro Improvement Corporation



Kearny Mesa Community Plan

"An epicenter of commerce, cuisine, and culture, now flourishing in a mixed-use and walkable community"

Spotlight on: Convoy Corridor



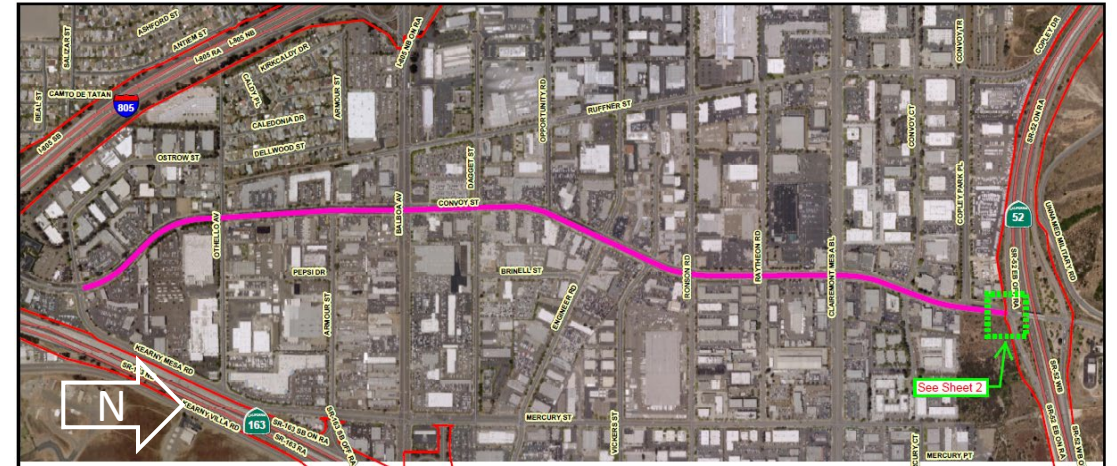
Convoy Square Development Under Construction

Convoy Corridor in the Kearny Mesa Community Plan

Convoy Street Infrastructure Improvements

Comprehensive Implementation

- Water pipeline project
 - AC Water and Sewer Group 1042, B-17117
- Bike network implementation per Kearny Mesa Community Plan
 - Separated Bikeway with buffers and posts
- Resurfacing 3.4 miles along Convoy Street



Pipeline and Resurfacing Project

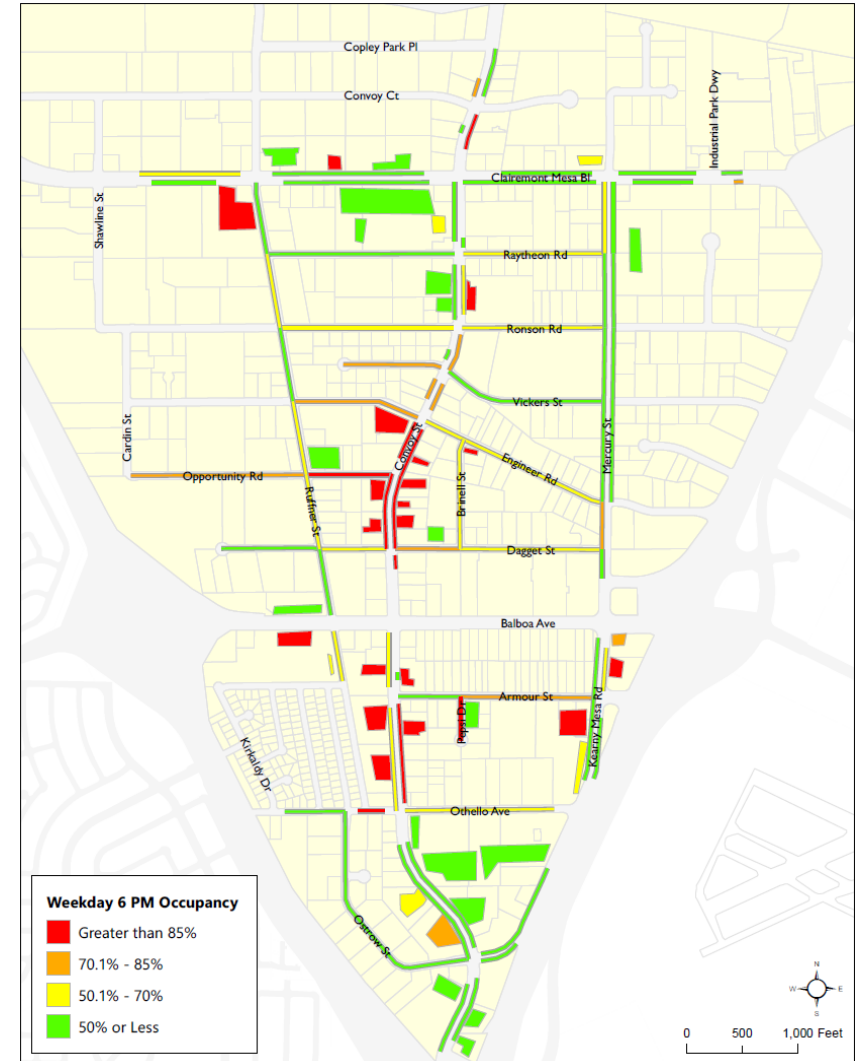


Convoy Street Cross Section with Separated Bikeway

Convoy Parking Study

- Inventory of existing parking and evaluation of current parking conditions
- Weekday and weekend data collection
 - Parking occupancy & turnover
- Understand parking behaviors through business and visitor surveys
- Comprehensive parking management recommended

Parking Occupancy – Weekday (6 PM – 7 PM)



Convoy Parking Study available on the [City's website](#).

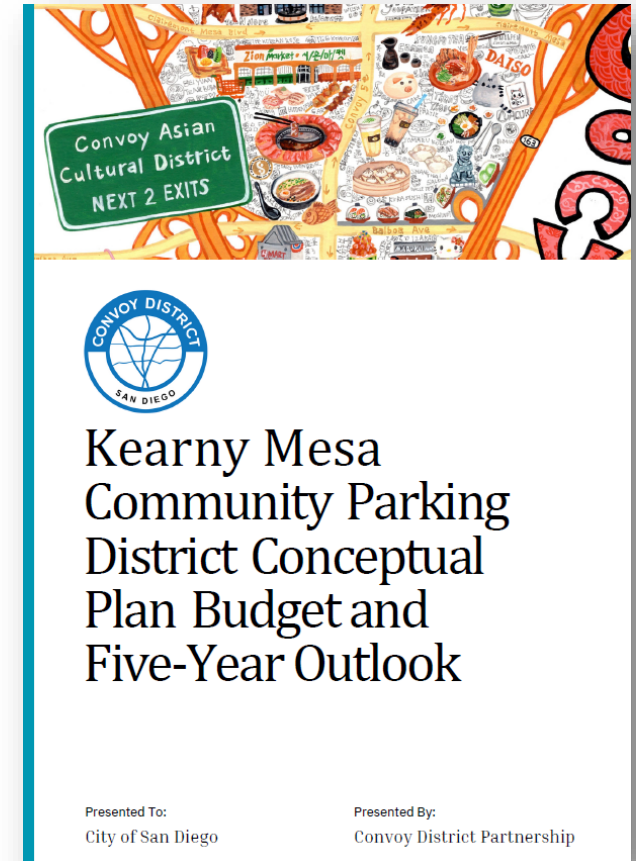
Kearny Mesa CPD Conceptual Plan

Administration and Management

- Administered by the Convoy District Partnership
- Explore revenue generating opportunities (shared parking agreements, valet, etc.)

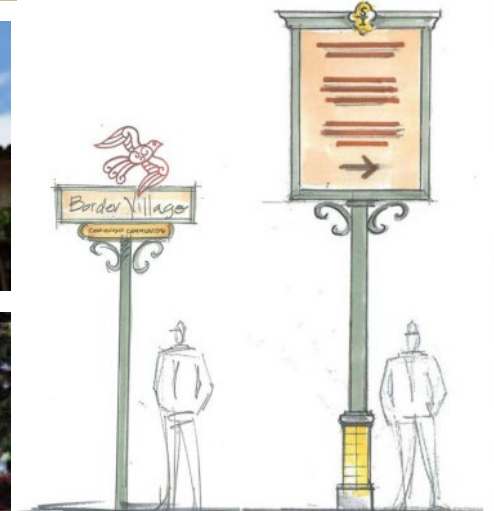
Proposed Initiatives

- Shared parking
- Pedestrian-scale lighting
- Wayfinding (parking and transportation information)
- Community shuttle service



San Ysidro Community Plan

*“A bustling, vibrant
community and gateway to
San Diego and the rest of the
United States”*





Parallel Efforts Underway



San Ysidro Mobility Hub (Phase 1)



Border to Bayshore Bikeway

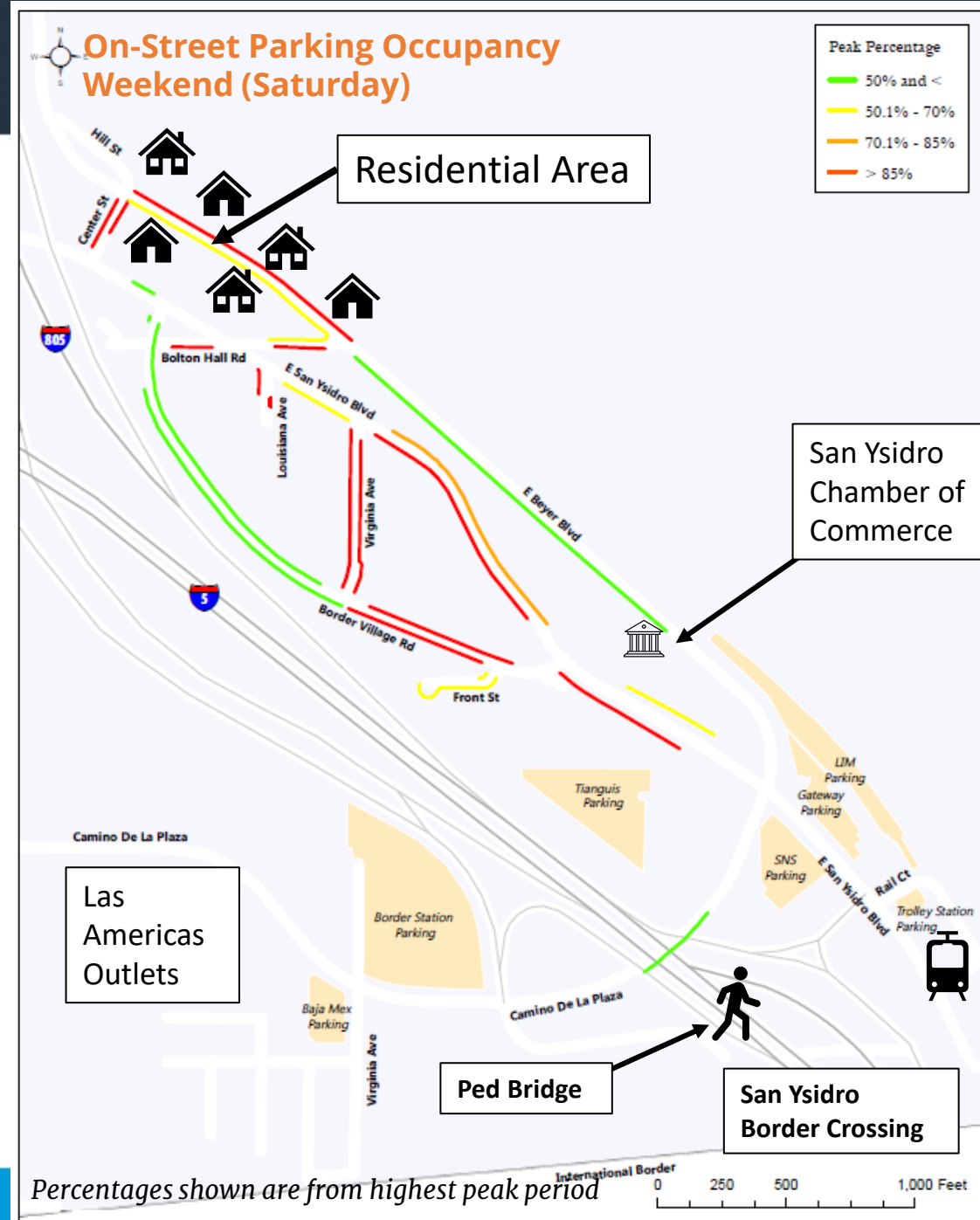


Advancing Border Connectivity Project



San Ysidro Parking Study

- Inventory of existing parking and evaluation of current parking conditions
- Weekday and weekend data collection
 - Parking occupancy & turnover
- Average vehicle duration in study area on Saturday: **3hrs 14 mins**
- Comprehensive parking management recommended



San Ysidro Parking Study available on the City's [website](#).

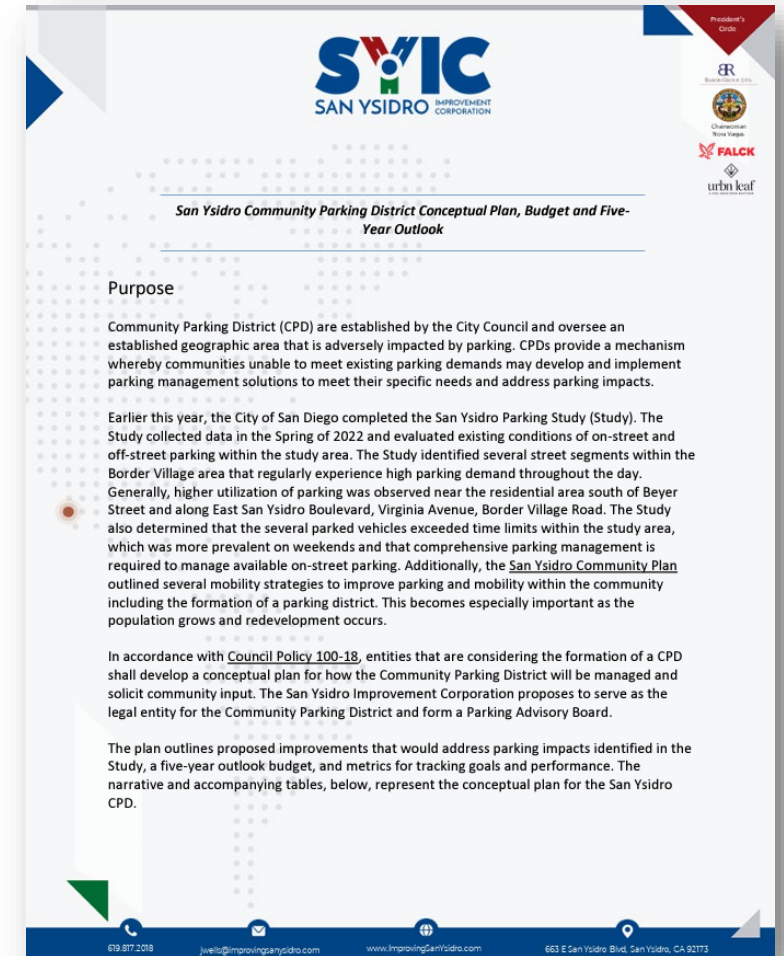
San Ysidro CPD Conceptual Plan

Administration and Management

- Administered by the San Ysidro Improvement Corporation
- Establish diverse and representative Parking Advisory Board

Proposed Initiatives

- Parking enforcement and education
- Curb (time-limits, loading, short-term parking) and parking meter evaluations
- Residential parking considerations
- Pedestrian-scale lighting, streetscape, and wayfinding



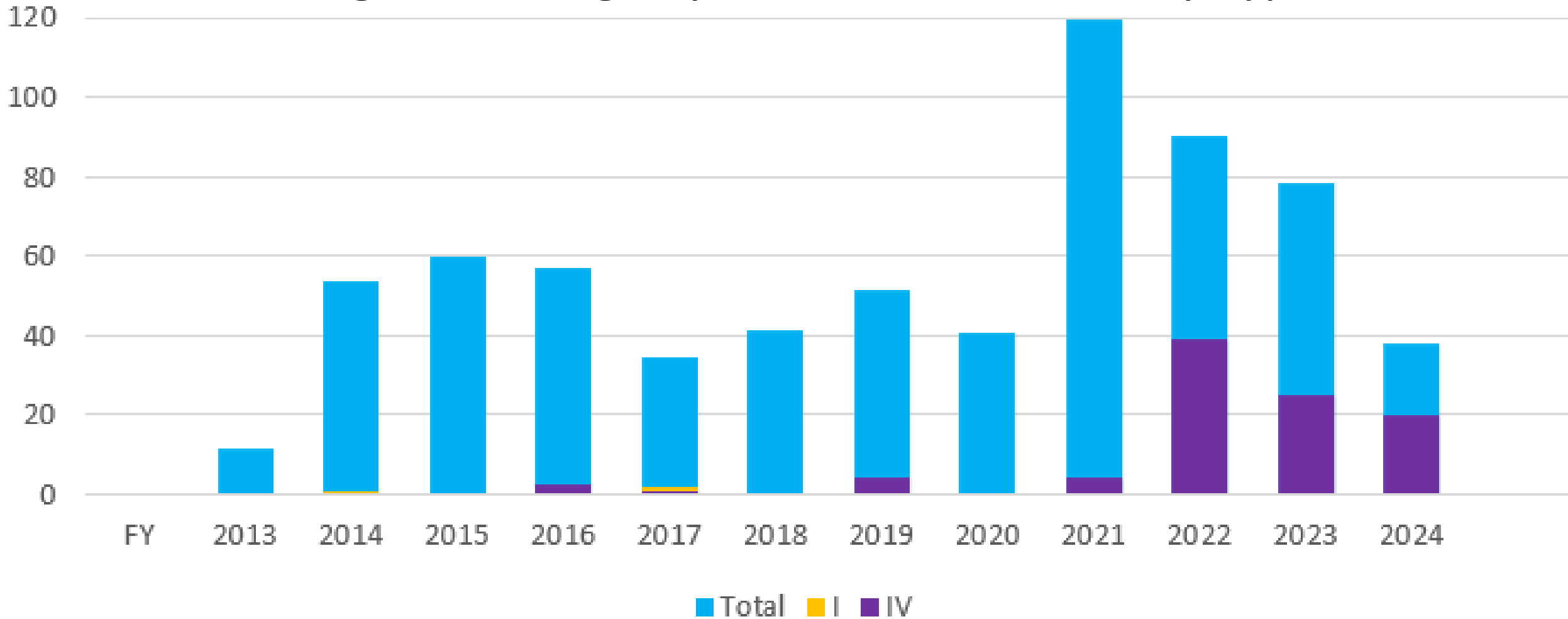
Transportation Department

Bike Program Update

November 1, 2023



Designed Mileage By Fiscal Year and Facility Type



Bike Program

Design Highlights:

Slurry

6th Ave, Aero Rd, Nobel Dr, Regents Rd, Home Ave, Lebon Dr,

Overlay

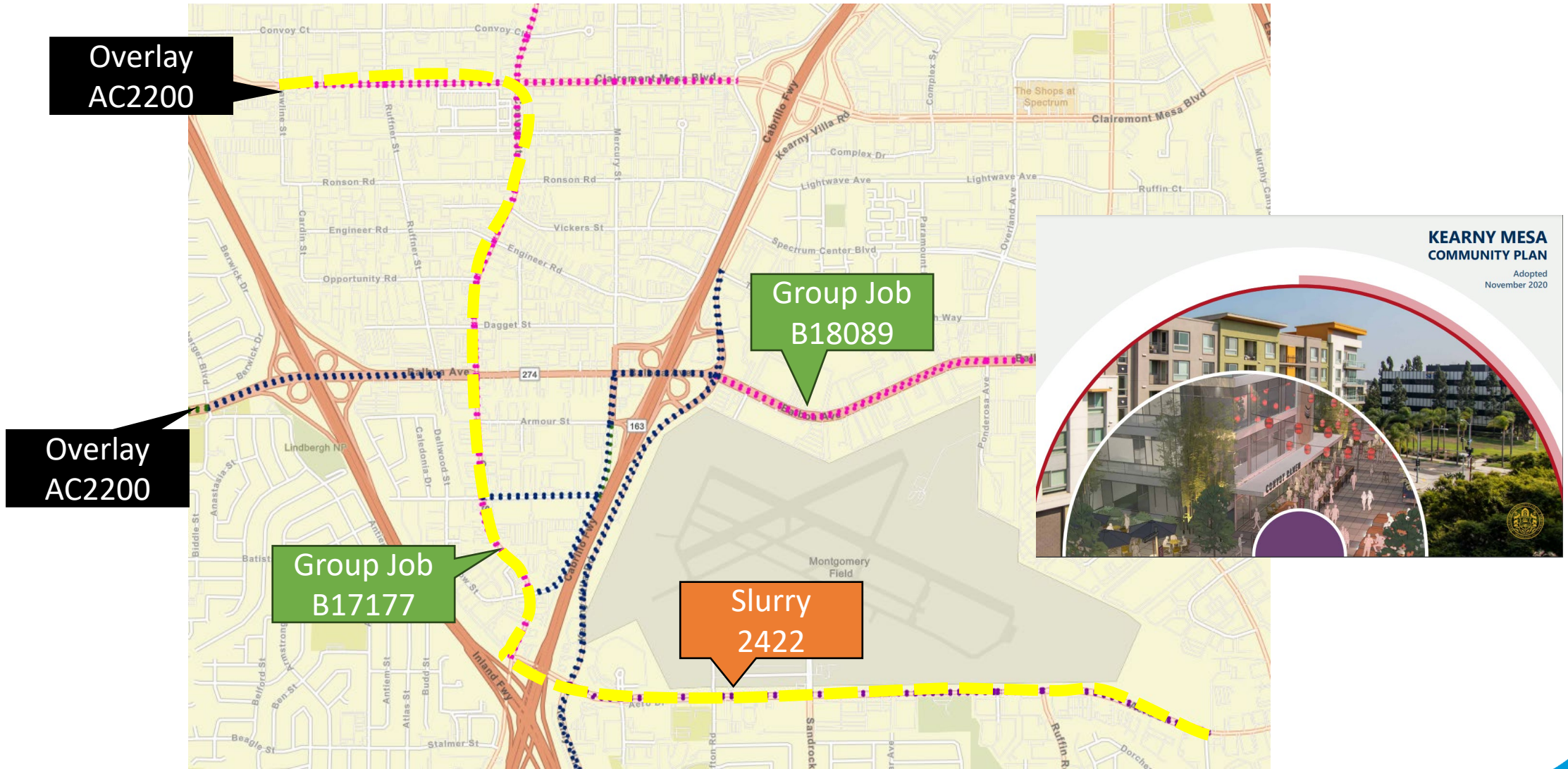
Balboa Ave, Clairemont Mesa Blvd, College Ave, W. Laurel St, Park Blvd, Paradise Valley,
Picador Blvd

Group Job Bundling

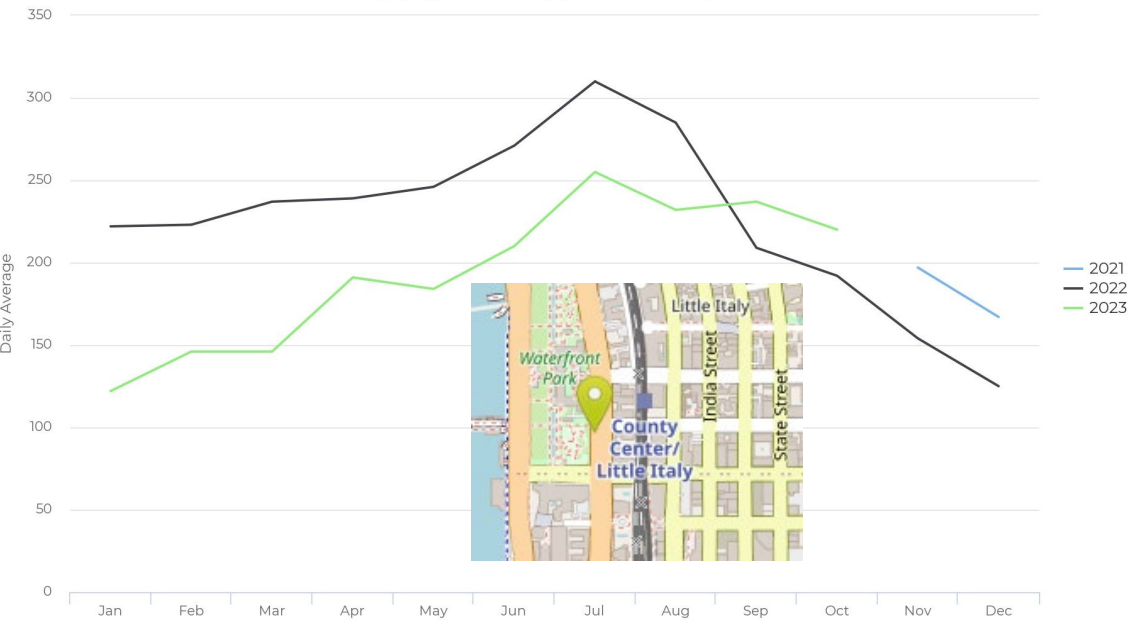
Convoy St, Balboa Ave, Clairemont Mesa Blvd, Kearny Villa Rd, Park Blvd

STAT

30th St TOBO restorations, W. Mission Bay Dr, Ingraham St, Scripps Ranch Blvd, J St

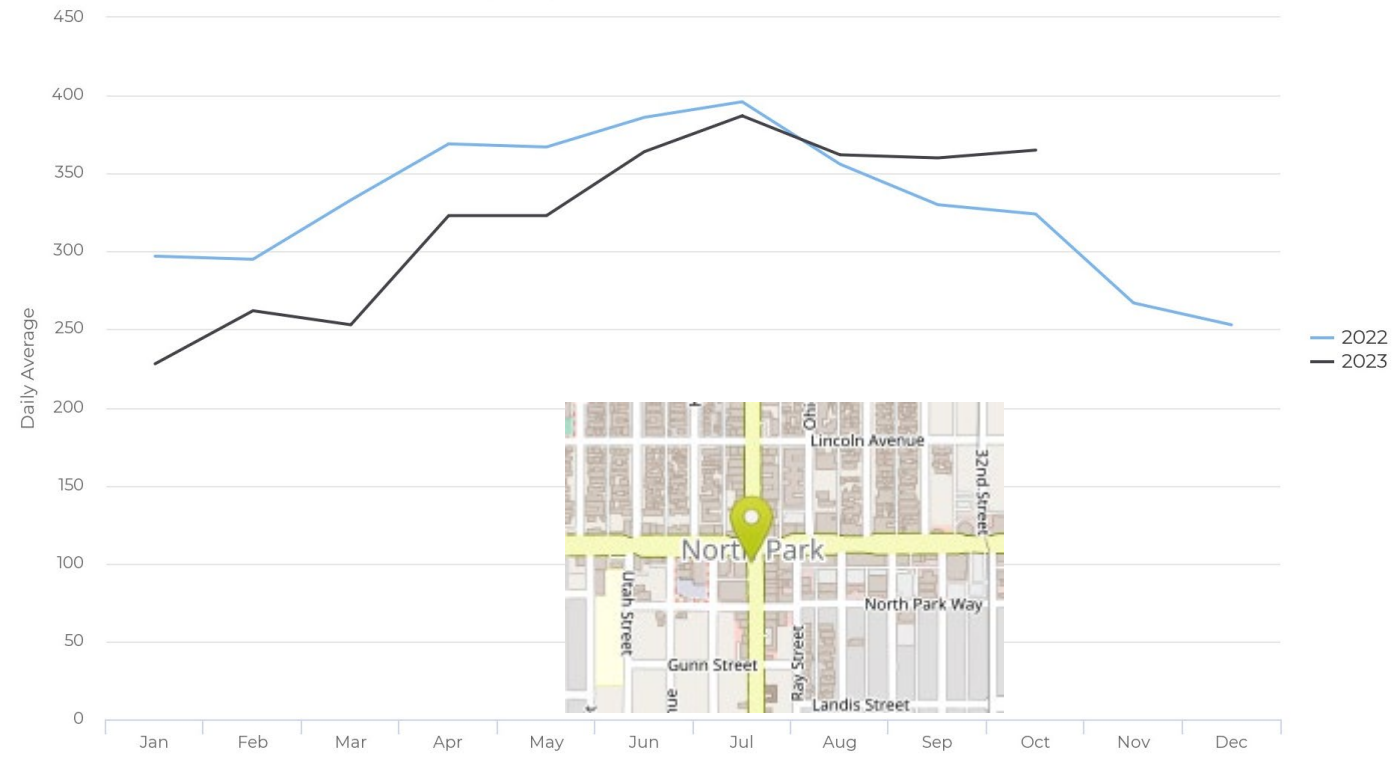


Annual Comparison by Month
@3y → @0d — January 1, 2020 → October 22, 2023



Pacific Highway

Annual Comparison by Month
@3y → @0d — January 1, 2020 → October 22, 2023



30th Street

Look Ahead

Street Design Manual Update

More sidewalk level bikeways

Work on integrated intersection improvements

Update to Bicycle Master Plan

November 2023 to February 2026