

**SECTION 5 – POTENTIAL WATERSHED ACTIVITIES**

**5.0 POTENTIAL WATERSHED ACTIVITIES**

Based on the Watershed Prioritization and Activity Implementation Strategy presented in the previous sections, the City has identified a set of future potential watershed activities to be implemented. These watershed activities are further targeted to priority Sectors (Sectors 1 through 6) in these watersheds. The LID BMPs are also been targeted to sites owned by the City. These activities range from Tier I Outreach and Enforcement activities to Tier III Erosion and Sediment Control BMPs. The City will plan on implementing these potential watershed activities based on effectiveness assessments of projects implemented in the previous years (indicated in Section 4.0) and also implement additional watershed activities as needed to meet the TMDL requirements.

The Table 5-1 describes the future potential activities and the tentative implementation year. The table further defines required education activities and special studies leading to the design, operation, maintenance and effectiveness monitoring of these projects. The maps following the table present the future potential watershed activities by watershed. These maps show possible locations of future BMPs. The City is undergoing a property assessment of additional possible City-owned sites. In addition, the City will evaluate these possible other sites as part of the conceptual design process that includes a geotechnical investigation. The lists of activities shown on these maps are identified in the Map Activity Index provided before these maps.

The following tables are to be used as guidance and will require periodic modification based on available resources, results of site selection evaluation, findings from the effectiveness assessment of the initial watershed activities, and water quality and source studies completed to address results of the identified data gaps. These tables are therefore a working document that should be updated as these data become available.

**SECTION 5 – POTENTIAL WATERSHED ACTIVITIES**

**Table 5-1. Summary of Current and Potential Future Permit Watershed Activities  
City of San Diego**

YEAR	REQUIRED PERMIT ACTIVITIES	REQUIRED PERMIT EDUCATION ACTIVITIES	DESIGN AND O&M ACTIVITIES FOR PERMIT PROJECTS	SPECIAL STUDIES AND EFFECTIVENESS MONITORING ACTIVITIES
<b>San Diego Bay Watershed - Chollas</b>				
2007	<ol style="list-style-type: none"> <li>Increase frequency and use vacuum type sweeping in targeted routes – one new truck and dedicated route in Sectors 1 &amp; 2</li> </ol>	<ol style="list-style-type: none"> <li>Conduct Outreach Activities in Target Street Sweeping Areas of Sectors 1 and 2</li> </ol>	<ul style="list-style-type: none"> <li>Design of additional Green Lot – Project #3A - porous pavements and bio-retention area – parking lot and green belt area – Memorial Park</li> <li>Designate inlet(s) – Project #12A- along aggressive street sweeping route in Sector 2 for pilot inlet insert trash separator device and bacteria filter BMP (Abtech)</li> </ul>	<ul style="list-style-type: none"> <li>Conduct Baseline Effectiveness Assessment Monitoring for Street Sweeping</li> </ul>
2008	<ol style="list-style-type: none"> <li>Conduct increased inspection and fact finding of top source groups for metals - metal related industries and auto related facilities in Sectors 1&amp; 2</li> <li>Conduct Trash Cleanups</li> <li>Implement pilot inlet trash separator device and bacteria filter BMP in area of aggressive street sweeping (Abtech Device) – Project #12A -Sector 2</li> </ol>	<ol style="list-style-type: none"> <li>Conduct pilot programs in residential areas where vacuum assisted street sweeping is being conducted – target behaviors related to bacteria/trash</li> <li>Conduct baseline survey of target residential areas where TMDL and Permit “Green Lot and Green Mall” projects are planned in Sectors 1 and 2.</li> <li>Initiate Pilot Programs for priority commercial sources - metal related industries and auto related facilities</li> </ol>	<ul style="list-style-type: none"> <li>Continue increased frequency and use of vacuum assisted street sweeper in Sectors 2 and 1.</li> <li>Complete Design of Green Lot Project #3 – porous pavements and bio-retention area – parking lot and green belt area (parking lot next to ocean view and 30<sup>th</sup> street in Sector 1)</li> <li>Complete Design of trash separation devices in target inlets along aggressive street sweeping route – Project #12- Sector 2</li> <li>Complete Design of Restoration and Bioretention Area at 30<sup>th</sup></li> </ul>	<ul style="list-style-type: none"> <li>Develop Watershed Activity Assessment Database and Tools.</li> <li>Coordinate with SUSMP Design Standards for LID and City Design Standards</li> <li>Conduct sampling to develop pollutograph for design storm</li> <li>Conduct Baseline Effectiveness Assessment Monitoring for Tier I and II activities</li> <li>Coordinate with Port on source study of auto related facilities</li> <li>Support product substitution campaigns targeting metals</li> </ul>

**SECTION 5 – POTENTIAL WATERSHED ACTIVITIES**

**Table 5-1. Summary of Current and Potential Future Permit Watershed Activities  
City of San Diego**

YEAR	REQUIRED PERMIT ACTIVITIES	REQUIRED PERMIT EDUCATION ACTIVITIES	DESIGN AND O&M ACTIVITIES FOR PERMIT PROJECTS	SPECIAL STUDIES AND EFFECTIVENESS MONITORING ACTIVITIES
			Street Canyon (Ash and Bancroft Streets) – Project #18	
2009	<ol style="list-style-type: none"> <li>1. Conduct increased inspection and fact finding of municipal facilities in Sectors 1&amp; 2</li> <li>2. Conduct Increase Inspections and fact finding in eating and drinking establishments in Sectors 1 &amp; 2</li> <li>3. Implement ‘Green Lot’ Project #3A– Porous pavement and infiltration vault in Memorial park – Sector 1</li> </ol>	<ol style="list-style-type: none"> <li>1. Continue pilot programs in residential areas where vacuum assisted street sweeping is being conducted – target behaviors related to bacteria/trash</li> <li>2. Conduct outreach and pilot programs in residential areas where TMDL and Permit “Green Lot and Green Mall” projects are planned in Sectors 1 and 2 – target bacteria/trash.</li> <li>3. Conduct Pilot Programs for priority commercial sources - metal related industries and auto related facilities – target behaviors related to metals</li> </ol>	<ul style="list-style-type: none"> <li>• Continue increased frequency and use of vacuum assisted street sweeper in Sectors 2 and 1.</li> <li>• Continue increased inspection of top source groups for metals - metal related industries and auto related facilities in Sectors 1&amp; 2</li> <li>• O&amp;M of pilot trash separator device and bacteria filter – Project #12A</li> <li>• Design of additional trash segregation and pilot inlet media filter BMP along route of aggressive street sweeping – Project #12B – Sector 2</li> </ul>	<ul style="list-style-type: none"> <li>• Continue development of Database structure, Query tool and reporting tool.</li> <li>• Conduct second year of sampling to develop pollutograph for design storm</li> <li>• Conduct Effectiveness Assessment Monitoring</li> <li>• Conduct source study in residential areas</li> <li>▪ Continue support of product substitution targeting metals</li> </ul>
2010	<ol style="list-style-type: none"> <li>1. Implement Green Lot – Project #3 – porous pavements and bio-retention area – parking lot and green belt area (parking lot next to ocean view and 30<sup>th</sup> street in Sector 1)</li> <li>2. Implement trash separation devices in target inlets along aggressive street sweeping</li> </ol>	<ol style="list-style-type: none"> <li>1. Conduct outreach and pilot programs in residential areas where TMDL and Permit “Green Lot and Green Mall” projects are planned in Sectors 1 and 2 – target bacteria/trash.</li> <li>2. Complete Pilot Programs for priority commercial sources -</li> </ol>	<ul style="list-style-type: none"> <li>• Continue increased frequency and use vacuum type sweeping in targeted routes – Third Year -one new truck and dedicated route</li> <li>• Continue increased inspection of top source groups for metals - metal related industries and auto</li> </ul>	<ul style="list-style-type: none"> <li>• Enter data and reformatting</li> <li>• Continue Effectiveness Assessment Monitoring</li> <li>• Continue product substitution initiatives</li> <li>• Complete development of pollutograph for design storm</li> <li>• Complete source study in residential areas (Sector 1)</li> </ul>

**SECTION 5 – POTENTIAL WATERSHED ACTIVITIES**

**Table 5-1. Summary of Current and Potential Future Permit Watershed Activities  
City of San Diego**

YEAR	REQUIRED PERMIT ACTIVITIES	REQUIRED PERMIT EDUCATION ACTIVITIES	DESIGN AND O&M ACTIVITIES FOR PERMIT PROJECTS	SPECIAL STUDIES AND EFFECTIVENESS MONITORING ACTIVITIES
	<p>route – Project #12 - Sector 2</p> <p>3. Implement restoration and bioretention area in 30<sup>th</sup> Street Canyon (Ash &amp; Bancroft Streets).</p>	<p>metal related industries and auto related facilities – target behaviors related to metals</p> <p>3. Complete pilot programs in residential areas where vacuum assisted street sweeping is being conducted – target behaviors related to bacteria/trash</p>	<p>related facilities in Sectors 1&amp; 2</p> <ul style="list-style-type: none"> <li>• Continue increased inspection and fact finding of municipal facilities in sectors 1&amp; 2</li> <li>• Continue Increase Inspections and fact finding in eating and drinking establishments in Sectors 1 &amp; 2</li> <li>• Maintain Green Lot – Project #3 – Memorial Park</li> <li>• O&amp;M of pilot trash separator device and bacteria filter – Project #12A</li> <li>• O&amp;M of trash separator devices in Sector 1 – Project #12</li> </ul>	
2011	<p>1. Modify codes to include baseline BMPs for top source groups – metals related industries and commercial auto related facilities – use feedback from Outreach Pilot Programs to emphasize the behaviors that have the highest probability of changing with highest reduction of impact</p> <p>2. Modified design standards for LID based on SUSMP design</p>	<p>1. Conduct pilot programs in residential areas where vacuum assisted street sweeping is being conducted – target behaviors related to bacteria/trash</p> <p>2. Initiated Pilot Programs for eating and drinking establishments in Sectors 1 and 2 – target behaviors related to bacteria</p> <p>3. Initiate Pilot Programs for Municipal facilities – Sectors</p>	<ul style="list-style-type: none"> <li>• Continue increased inspection of top source groups for metals - metal related industries and auto related facilities in Sectors 1&amp; 2</li> <li>• Continue increased inspection and fact finding of municipal facilities in Sectors 1&amp; 2</li> <li>• Continue Increase Inspections and fact finding in eating and drinking</li> </ul>	<ul style="list-style-type: none"> <li>• Enter data and Reformatting</li> <li>• Continue Effectiveness Assessment Monitoring</li> <li>• Continue – support existing product substitution initiatives and initiate work – groups for additional product substitution legislation. Evaluate potential for localized ban of products that increase trash in waters.</li> <li>• Continue source study in residential areas - Sectors 2 &amp; 4</li> </ul>

**SECTION 5 – POTENTIAL WATERSHED ACTIVITIES**

**Table 5-1. Summary of Current and Potential Future Permit Watershed Activities  
City of San Diego**

YEAR	REQUIRED PERMIT ACTIVITIES	REQUIRED PERMIT EDUCATION ACTIVITIES	DESIGN AND O&M ACTIVITIES FOR PERMIT PROJECTS	SPECIAL STUDIES AND EFFECTIVENESS MONITORING ACTIVITIES
	<p>standards</p> <p>3. Add an additional vacuum type sweeper to targeted routes in Sectors 1 and 3</p> <p>4. Implement additional trash segregation and pilot inlet media filter devices along routes of aggressive street sweeping – Project #12B – Sector 2</p>	<p>1 and 2 – target metals, pesticides</p> <p>4. Initiate pilot programs in residential areas where green projects implemented – target behaviors related to runoff reduction and pesticide use</p>	<p>establishments in Sectors 1 &amp; 2</p> <ul style="list-style-type: none"> <li>• Maintain Green Lot – Project #3 – Memorial Park</li> </ul>	
<b>Mission Bay Watershed –Tecolote Creek/Rose Canyon/Miramar</b>				
2007		<ul style="list-style-type: none"> <li>▪ Initiate baseline survey of target residential area for LID projects</li> </ul>	<ul style="list-style-type: none"> <li>▪ Design of ‘Green Street’ – Project #1 - infiltration/vegetated strips and porous sidewalk on city street in residential area</li> </ul>	<ul style="list-style-type: none"> <li>• Coordinate with copermittees on source study of eating and drinking establishments</li> <li>• Initiate design and coordination for rain barrels at Rose Canyon Maintenance Yard.</li> </ul>
2008	<p>1. Conduct increased inspection of eating and drinking establishment in priority area and fact finding on current practices that may result in bacteria loading.</p> <p>2. Install Rain Barrels at Rose Canyon Maintenance Yard</p> <p>3. Trash Cleanups in Canyon Areas</p>	<p>1. Conduct baseline survey of target residential area for LID project and outreach</p> <p>2. Conduct baseline survey and initiate pilot program to target residential areas on activities that control bacteria loading</p>	<ul style="list-style-type: none"> <li>• Design of 2 diversions and flap gates at Visitor’s Center and Cudahy Creek – CBI Grant</li> <li>• Design of Bacteria treatment BMP with gross pollutants removal and control of bacteria load Project #1a</li> </ul>	<ul style="list-style-type: none"> <li>• Coordinate with copermittees on source study of eating and drinking establishments</li> </ul>

**SECTION 5 – POTENTIAL WATERSHED ACTIVITIES**

**Table 5-1. Summary of Current and Potential Future Permit Watershed Activities  
City of San Diego**

<b>YEAR</b>	<b>REQUIRED PERMIT ACTIVITIES</b>	<b>REQUIRED PERMIT EDUCATION ACTIVITIES</b>	<b>DESIGN AND O&amp;M ACTIVITIES FOR PERMIT PROJECTS</b>	<b>SPECIAL STUDIES AND EFFECTIVENESS MONITORING ACTIVITIES</b>
2009	<ol style="list-style-type: none"> <li>1. Conduct increased inspections and fact funding – next 2 top source priorities</li> <li>2. Implement ‘Green Street’ – Project #1 -infiltration/vegetated strips and porous sidewalk on city street in residential area</li> <li>3. Trash Cleanups in Canyon Areas</li> </ol>	<ol style="list-style-type: none"> <li>1. Continue pilot program to target residential area for new LID project with focus on behaviors related to bacteria and water usage</li> <li>2. Conduct pilot program on eating and drinking establishments – targeting behaviors related to bacteria loading and water usage</li> </ol>	<ul style="list-style-type: none"> <li>• Design additional ‘Green Street’ – Project #2 - infiltration/vegetated strips and porous sidewalk on city street in residential area</li> </ul>	<ul style="list-style-type: none"> <li>• Coordinate with copermittees on source study of eating and drinking establishments</li> <li>• Conduct baseline effectiveness monitoring</li> </ul>
2010	<ol style="list-style-type: none"> <li>1. Conduct increased inspections and fact funding – next 2 top source priorities</li> <li>2. Increase frequency and use vacuum type sweeping in targeted routes -1 new truck and dedicated route</li> <li>3. Implement 2 diversions and flap gates at Visitor’s Center and Cudahy Creek – CBI Grant</li> <li>4. Implement Bacteria treatment BMP with gross pollutants removal and control of bacteria load Project #1a</li> </ol>	<ol style="list-style-type: none"> <li>1. Continue pilot program to target residential area for new LID project with focus on behaviors related to bacteria and water usage</li> <li>2. Conduct pilot program on eating and drinking establishments – targeting behaviors related to bacteria loading and water usage Continue pilot program to target residential area for new LID project with focus on behaviors related to bacteria and water usage</li> </ol>	<ul style="list-style-type: none"> <li>▪ Maintain Existing Green Streets – Project #1</li> </ul>	<ul style="list-style-type: none"> <li>• Coordinate with copermittees on source study of eating and drinking establishments</li> <li>• Conduct effectiveness assessment monitoring</li> </ul>
2011	<ol style="list-style-type: none"> <li>1. Conduct increased inspections and fact finding of the next 2 source priorities (municipal facilities and auto related facilities)</li> </ol>	<ol style="list-style-type: none"> <li>1. Conduct outreach of revised codes to next source priorities –sector 1</li> <li>2. Conduct outreach of revised codes to next source priorities</li> </ol>	<ul style="list-style-type: none"> <li>▪ Maintain Existing Green Streets – Project #1</li> <li>▪ Maintain existing Bacteria treatment BMP with gross pollutants removal and</li> </ul>	<ul style="list-style-type: none"> <li>• Conduct effectiveness assessment monitoring</li> </ul>

**SECTION 5 – POTENTIAL WATERSHED ACTIVITIES**

**Table 5-1. Summary of Current and Potential Future Permit Watershed Activities  
City of San Diego**

YEAR	REQUIRED PERMIT ACTIVITIES	REQUIRED PERMIT EDUCATION ACTIVITIES	DESIGN AND O&M ACTIVITIES FOR PERMIT PROJECTS	SPECIAL STUDIES AND EFFECTIVENESS MONITORING ACTIVITIES
	2. Implement additional 'Green Street' – Project #2 - infiltration/vegetated strips and porous sidewalk on city street in residential area	–Sector 2	control of bacteria load Project #1a ▪ Second Year of Increase frequency and use vacuum type sweeping in targeted routes -1 new truck and dedicated route	
<b>Mission Bay Watershed – La Jolla Shores ASBS</b>				
2007		▪ Initiate baseline survey of target residential community for LID	▪ Design of four dry weather diversions per City Engineer Plan (Grant Funded)	
2008	1. Conduct increased inspection of eating and drinking establishment in priority area and fact finding on current practices that may result in bacteria loading  2. Installation of 4 dry weather diversions – Consolidated Grant	1. Conduct baseline survey of target residential area for LID project and outreach 2. Conduct baseline survey and outreach to target residential areas on activities that control bacteria loading and water use	▪ Design remaining 2 diversions of dry weather flow or first flush effective on targeted areas – Project #4 ▪ Design upgrades to Avenida de la Playa outfall and Culvert - Project #5	▪ Conduct sampling to develop pollutograph for design storm (La Jolla shores ASBS) ▪ Coordinate with copermittees on source study of eating and drinking establishments and auto related facilities ▪ Conduct baseline effectiveness assessment monitoring ▪ Conduct sediment source and characterization study to develop approach to sediment reduction ▪ Conduct air deposition study to determine metals contribution
2009	1. Installation of dry weather diversions – Consolidated Grant  2. Conduct Increased Inspections of Auto-related facilities.	1. Conduct pilot programs of target residential area for LID project and outreach to target residential areas on activities that control bacteria loading and runoff	▪ Maintain Dry Weather Diversions – Project #2 ▪ Continue increased inspection of eating and drinking establishment in priority area and fact finding	▪ Conduct sampling to develop pollutograph for design storm (La Jolla shores ASBS) ▪ Coordinate with copermittees on source study of eating and drinking establishments and auto related

**SECTION 5 – POTENTIAL WATERSHED ACTIVITIES**

**Table 5-1. Summary of Current and Potential Future Permit Watershed Activities  
City of San Diego**

YEAR	REQUIRED PERMIT ACTIVITIES	REQUIRED PERMIT EDUCATION ACTIVITIES	DESIGN AND O&M ACTIVITIES FOR PERMIT PROJECTS	SPECIAL STUDIES AND EFFECTIVENESS MONITORING ACTIVITIES
		2. Conduct pilot programs of eating and drinking establishments on activities that control bacteria loading and runoff	on current practices that may result in bacteria loading	facilities <ul style="list-style-type: none"> <li>▪ Conduct baseline effectiveness assessment monitoring</li> <li>▪ Conduct sediment source and characterization study to develop approach to sediment reduction</li> <li>▪ Continue to conduct air deposition study to determine metals contribution</li> </ul>
2010	1. Increase frequency and use vacuum type sweeping in targeted routes – 1 new truck and dedicated routes (La Jolla shores drive and collectors)  2. Installation of dry weather diversions and upgrades to Ave. del la Playa diversion – CBI Grants	1. Conduct pilot programs of target residential area for LID project and outreach to target residential areas on activities that control bacteria loading and runoff  2. Conduct pilot programs of eating and drinking establishments on activities that control bacteria loading and runoff	<ul style="list-style-type: none"> <li>▪ Maintain Dry Weather Diversions – Project #2</li> <li>▪ Continue increased inspection of eating and drinking establishment in priority area and fact finding on current practices that may result in bacteria loading</li> </ul>	<ul style="list-style-type: none"> <li>▪ Coordinate with copermittees on source study of eating and drinking establishments and auto related facilities</li> <li>▪ Conduct effectiveness assessment monitoring</li> </ul>



**SECTION 5 – POTENTIAL WATERSHED ACTIVITIES**

**Table 5-1. Summary of Current and Potential Future Permit Watershed Activities  
City of San Diego**

YEAR	REQUIRED PERMIT ACTIVITIES	REQUIRED PERMIT EDUCATION ACTIVITIES	DESIGN AND O&M ACTIVITIES FOR PERMIT PROJECTS	SPECIAL STUDIES AND EFFECTIVENESS MONITORING ACTIVITIES
2011	<ol style="list-style-type: none"> <li>1. Implement runoff reduction incentive program – rebate on smart irrigation systems</li> <li>2. Implement runoff reduction program and bacteria reduction program along Avenida del la Playa based on source study and pilot outreach activities – coordinate with businesses and provide incentives to reduce</li> </ol>	<ol style="list-style-type: none"> <li>1. Conduct pilot programs of target residential area for LID project and outreach to target residential areas on activities that control bacteria loading and runoff</li> <li>2. Conduct pilot programs of eating and drinking establishments on activities that control bacteria loading and runoff</li> </ol>	<ul style="list-style-type: none"> <li>▪ Maintain Dry Weather Diversions – Project #2</li> <li>▪ Continue increased inspection of eating and drinking establishment in priority area and fact finding on current practices that may result in bacteria loading</li> <li>▪ Second Year - Increase frequency and use vacuum type sweeping in targeted routes – 1 new truck and dedicated routes (La Jolla shores drive and collectors)</li> </ul>	<ul style="list-style-type: none"> <li>▪ Coordinate with copermittees on source study of eating and drinking establishments and auto related facilities</li> <li>▪ Conduct effectiveness assessment monitoring</li> </ul>

**SECTION 5 – POTENTIAL WATERSHED ACTIVITIES**

**Table 5-1. Summary of Current and Potential Future Permit Watershed Activities  
City of San Diego**

YEAR	REQUIRED PERMIT ACTIVITIES	REQUIRED PERMIT EDUCATION ACTIVITIES	DESIGN AND O&M ACTIVITIES FOR PERMIT PROJECTS	SPECIAL STUDIES AND EFFECTIVENESS MONITORING ACTIVITIES
<b>San Diego River Watershed</b>				
2007		<ul style="list-style-type: none"> <li>▪ Initiate baseline surveys of target residential areas</li> </ul>		
2008	<ol style="list-style-type: none"> <li>1. Conduct Increased Inspections and Fact Finding of Eating and Drinking Establishments in prioritized area to identify and address practices that may result in bacteria loading.</li> <li>2. Conduct increased inspection of animal facilities in priority area to identify and address practices that may result in bacteria loading.</li> <li>3. Trash Cleanups</li> </ol>	<ol style="list-style-type: none"> <li>1. Conduct Baseline Surveys of Target Residential Areas for activities that may result in bacteria loading</li> <li>2. Conduct baseline surveys of target community and businesses for sediment</li> </ol>	<ul style="list-style-type: none"> <li>▪ Design Erosion and sediment Control BMPs for erosion control – Project #2.</li> </ul>	<ul style="list-style-type: none"> <li>▪ Conduct Source Survey and update inventory Coordinate with other Copermittees on Source Studies</li> <li>▪ Initiate sediment source study and integrate with hydro-modification program</li> <li>▪ Identify restoration opportunities that can be linked to sediment control and hydro-modification projects.</li> </ul>
2009	<ol style="list-style-type: none"> <li>1. Conduct Increased Inspection and Fact Finding of Commercial Landscaping and Golf Courses – target sediment</li> <li>2. Conduct Increased Inspection and Fact Finding of Projects Subject to SUSMPS and Municipal Facilities (parks) – target sediment</li> <li>3. Trash Cleanups</li> </ol>	<ol style="list-style-type: none"> <li>1. Continue to Conduct Baseline Surveys of Target Residential Areas for bacteria loading</li> <li>2. Continue to Conduct baseline surveys of target community and businesses for sediment</li> </ol>	<ul style="list-style-type: none"> <li>▪ Continue Increased Inspections and Fact Finding of Eating and Drinking Establishments in prioritized areas to identify and address practices that may result in bacteria loading.</li> <li>▪ Continue increased inspection of animal facilities in priority area to identify and address practices that may result in bacteria loading.</li> <li>▪ Design Green Mall – Project #3</li> </ul>	<ul style="list-style-type: none"> <li>▪ Conduct Source Survey and update inventory Coordinate with other Copermittees on Source Studies</li> <li>▪ Conduct sediment source study and integrate with hydro-modification program</li> <li>▪ Identify restoration opportunities that can be linked to sediment control and hydro-modification projects.</li> </ul>
2010	<ol style="list-style-type: none"> <li>1. Expand Increased Inspection of Commercial Landscaping, Golf</li> </ol>	<ol style="list-style-type: none"> <li>1. Conduct outreach of Target Residential Area where runoff</li> </ol>	<ul style="list-style-type: none"> <li>▪ Continue Increased Inspections and Fact</li> </ul>	<ul style="list-style-type: none"> <li>▪ Conduct Source Survey and update inventory</li> </ul>

**SECTION 5 – POTENTIAL WATERSHED ACTIVITIES**

**Table 5-1. Summary of Current and Potential Future Permit Watershed Activities  
City of San Diego**

YEAR	REQUIRED PERMIT ACTIVITIES	REQUIRED PERMIT EDUCATION ACTIVITIES	DESIGN AND O&M ACTIVITIES FOR PERMIT PROJECTS	SPECIAL STUDIES AND EFFECTIVENESS MONITORING ACTIVITIES
	<p>Courses, Projects Subject to SUSMPs and Municipal Facilities – target sediment</p> <ol style="list-style-type: none"> <li>2. Install 2 Erosion and sediment Control BMPs for erosion control – Project #2.</li> <li>3. Implement Runoff Reduction program in target community and commercial area - Provide incentives for use of weather-based irrigations systems and zero-scapes</li> </ol>	<p>reduction program will be initiated – target behaviors that lead to over-irrigation and urban runoff</p> <ol style="list-style-type: none"> <li>2. Conduct pilots on golf courses, parks, and commercial landscaping – target behaviors that lead to sediment loading</li> <li>3. Outreach to Community for "Green Mall" – target behaviors that lead to over irrigation.</li> </ol>	<p>Finding of Eating and Drinking Establishments in prioritized area to identify and address practices that may result in bacteria loading.</p> <ul style="list-style-type: none"> <li>▪ Continue increased inspection of animal facilities in priority area to identify and address practices that may result in bacteria loading.</li> <li>▪ Continue Increased Inspection and Fact Finding of Commercial Landscaping and Golf Courses – target sediment</li> <li>▪ Continue Increased Inspection and Fact Finding of Projects Subject to SUSMPS and Municipal Facilities (parks) – target sediment</li> <li>▪ Design of restoration project that also addresses sediment control and hydro-modification.</li> </ul>	<ul style="list-style-type: none"> <li>▪ Coordinate with other Copermitees on Source Studies</li> <li>▪ Conduct sediment source study and integrate with hydro-modification program</li> <li>▪ Identify additional restoration opportunities that can be linked to sediment control and hydro-modification projects.</li> </ul>
2011	<ol style="list-style-type: none"> <li>1. Expand Increased Inspection of Commercial Landscaping, projects subject to SUSMPS, Golf Courses and Municipal Facilities</li> <li>2. Implement Green Mall – porous pavement and Bioretention</li> </ol>	<ol style="list-style-type: none"> <li>1. Conduct pilots at eating and drinking establishments and animal facilities that target behaviors that lead to bacteria loading</li> <li>2. Conduct outreach of Target Residential Area where runoff</li> </ol>	<ul style="list-style-type: none"> <li>▪ Maintain 2 Erosion and sediment Control BMPs for erosion control – Project #1.</li> <li>▪ Continue Increased Inspections where effective</li> <li>▪ Continue runoff reduction</li> </ul>	<ul style="list-style-type: none"> <li>▪ Complete Source Survey and update inventory</li> <li>▪ Coordinate with other Copermitees on Source Studies</li> <li>▪ Complete sediment source study and integrate with hydro-modification program</li> </ul>

**SECTION 5 – POTENTIAL WATERSHED ACTIVITIES**

**Table 5-1. Summary of Current and Potential Future Permit Watershed Activities  
City of San Diego**

YEAR	REQUIRED PERMIT ACTIVITIES	REQUIRED PERMIT EDUCATION ACTIVITIES	DESIGN AND O&M ACTIVITIES FOR PERMIT PROJECTS	SPECIAL STUDIES AND EFFECTIVENESS MONITORING ACTIVITIES
	area – Project #3	reduction program will be initiated – target behaviors that lead to over-irrigation and urban runoff 3. Conduct pilots on golf courses, parks and commercial landscaping – target behaviors that lead to sediment loading 4. Outreach to Community for "Green Mall" – target behaviors that lead to over irrigation.	program – incentives for weather-based irrigation systems and zero-scapes	<ul style="list-style-type: none"> <li>▪ Identify additional restoration opportunities that can be linked to sediment control and hydro-modification projects.</li> </ul>
<b>Los Peñasquitos Watershed</b>				
2007		<ul style="list-style-type: none"> <li>▪ Initiate baseline survey of priority residential area for bacteria related activities (dog waste, landscaping, trash management, nuisance flows)</li> </ul>		
2008	<ol style="list-style-type: none"> <li>1. Conduct increased inspection of eating and drinking establishment in priority area and fact finding on current practices that may result in bacteria loading</li> <li>2. Conduct increased inspection of animal related facilities in priority area and fact finding on current practices that may result in bacteria loading</li> <li>3. Trash Cleanups</li> </ol>	<ol style="list-style-type: none"> <li>1. Conduct baseline survey of priority residential area for bacteria related activities (dog waste, landscaping, trash management, nuisance flows)</li> <li>2. Conduct baseline survey of commercial landscaping and conduct outreach in priority drainage area of planned sediment control BMPs targeting activities that lead to sediment loading</li> </ol>	<ul style="list-style-type: none"> <li>▪ Design Erosion and sediment Control BMP Projects (2) in prioritized area – Project #1</li> </ul>	<ul style="list-style-type: none"> <li>▪ Conduct survey and update source inventory of eating and drinking facilities and animal related facilities in priority areas – data entry</li> <li>▪ Coordination w/ other Copermittees on Source Studies – Animal Related Facilities</li> <li>▪ Study of Sedimentation sources and coordination with hydromodification program to prioritize projects</li> <li>▪ Development of Erosion and Sediment Control and Peak Flow Management Program – Include study of restoration opportunities that</li> </ul>

**SECTION 5 – POTENTIAL WATERSHED ACTIVITIES**

**Table 5-1. Summary of Current and Potential Future Permit Watershed Activities  
City of San Diego**

YEAR	REQUIRED PERMIT ACTIVITIES	REQUIRED PERMIT EDUCATION ACTIVITIES	DESIGN AND O&M ACTIVITIES FOR PERMIT PROJECTS	SPECIAL STUDIES AND EFFECTIVENESS MONITORING ACTIVITIES
2009	<ol style="list-style-type: none"> <li>1. Conduct Increase Inspections of Commercial Landscaping, Golf Courses, and Municipal facilities in priority area and fact finding on current practices that may result in sediment loading</li> <li>2. Trash Cleanups</li> </ol>	<ol style="list-style-type: none"> <li>1. Continue baseline and conduct pilot studies to residence in prioritized area for bacteria related activities (dog waste, landscaping, trash management, nuisance flows)</li> <li>2. Continue baseline survey of residences and commercial landscaping and conduct pilots in priority drainage area for behaviors that lead to sediment load.</li> </ol>	<ul style="list-style-type: none"> <li>▪ Design of “Green Mall” Project #5</li> </ul>	<p>can be combined with peak flow management projects</p> <ul style="list-style-type: none"> <li>▪ Conduct Survey and update inventory of eating and drinking facilities, animal related facilities, commercial landscape facilities in priority areas</li> <li>▪ Source Study for Bacteria Loading to Verify Prioritized Sources</li> <li>▪ Continue Study of Sedimentation Issues and Prelim. Design of Erosion and Sediment Control and Peak Flow Management Project to address sediment load to creek – stabilize areas of canyons and provide retention basin within City property – combine with possible restoration opportunities</li> <li>▪ Conduct Baseline Effectiveness Monitoring of Community targeted for Rain Barrel Project and outreach for bacteria and sediment load activities</li> <li>▪ Conduct baseline effectiveness monitoring of Erosion and sediment Control BMP to measure sediment removal and to assess bacteria re-growth addressed.</li> </ul>
2010	<ol style="list-style-type: none"> <li>1. Install Erosion and sediment Control BMP Projects (2) in prioritized area to reduce sediment load – device and maintenance to also address bacteria re-growth issues – Project #1</li> </ol>	<ol style="list-style-type: none"> <li>1. Conduct outreach in targeted residential community on low impact approaches using rain barrels and low impact gardening</li> <li>2. Conduct outreach to eating and drinking establishments</li> </ol>		<ul style="list-style-type: none"> <li>▪ Continue to conduct Survey and update inventory of priority sources - eating and drinking facilities, animal related facilities, commercial landscape facilities, municipal facilities in priority areas</li> <li>▪ Conduct Effectiveness Assessment</li> </ul>

**SECTION 5 – POTENTIAL WATERSHED ACTIVITIES**

**Table 5-1. Summary of Current and Potential Future Permit Watershed Activities  
City of San Diego**

YEAR	REQUIRED PERMIT ACTIVITIES	REQUIRED PERMIT EDUCATION ACTIVITIES	DESIGN AND O&M ACTIVITIES FOR PERMIT PROJECTS	SPECIAL STUDIES AND EFFECTIVENESS MONITORING ACTIVITIES
	2. Expand Increased Inspections of Animal Facilities, Eating and Drinking Establishments in additional prioritized areas to reduce bacteria loading 3. Implement Rain Barrels/Low Impact Garden Project in Target Residential Area (approximately 250 residences) to reduce flows (peak discharge) and sediment/ bacteria loading – Project #3	and Commercial Landscaping on new codes and program of increased inspections 3. Conduct outreach to community for proposed “Green Mall” project		Monitoring of Community targeted for Rain Barrel Project and outreach for bacteria and sediment load activities
2011	1. Expand increased inspection of commercial landscaping, municipal facilities and golf courses in additional target areas to reduce sediment load 2. Implementation of “Green Mall” project in prioritized area at a location that includes commercial development – Project #5	1. Continue to conduct outreach in targeted residential community on low impact approaches using rain barrels and low impact gardening 2. Continue to conduct outreach to eating and drinking establishments and Commercial Landscaping on new codes and program of increased inspections	1. Maintain Erosion and sediment Control BMP Projects (2) in prioritized area to reduce sediment load – device and maintenance to also address bacteria re-growth issues – Project #1	<ul style="list-style-type: none"> <li>▪ Conduct Effectiveness Assessment Monitoring of Community targeted for Rain Barrel Project (Project #3) and outreach for bacteria and sediment load activities</li> <li>▪ Conduct Effectiveness Assessment Monitoring of Sediment Control Project #4 to measure load reduction achieved.</li> </ul>
<b>San Dieguito Watershed</b>				
2007		<ul style="list-style-type: none"> <li>▪ Initiate baseline survey of priority residential area for bacteria related activities (dog waste, landscaping, trash management, nuisance flows)</li> </ul>		
2008	1. Conduct increased inspection of eating and drinking establishment in priority area and fact finding on current	1. Conduct baseline survey of priority residential area for bacteria related activities (dog waste, landscaping, trash	<ul style="list-style-type: none"> <li>▪ Conduct study and design bacteria load reduction project in target drainage area – debris and Trash</li> </ul>	<ul style="list-style-type: none"> <li>▪ Conduct survey and update source inventory of eating and drinking facilities and animal related facilities in priority areas – data entry</li> </ul>

**SECTION 5 – POTENTIAL WATERSHED ACTIVITIES**

**Table 5-1. Summary of Current and Potential Future Permit Watershed Activities  
City of San Diego**

YEAR	REQUIRED PERMIT ACTIVITIES	REQUIRED PERMIT EDUCATION ACTIVITIES	DESIGN AND O&M ACTIVITIES FOR PERMIT PROJECTS	SPECIAL STUDIES AND EFFECTIVENESS MONITORING ACTIVITIES
	<p>practices that may result in bacteria loading</p> <p>2. Trash Cleanups</p>	<p>management, nuisance flows)</p> <p>2. Conduct baseline survey of commercial landscaping regarding behaviors that lead to sediment loading and conduct outreach in priority drainage area of planned sediment control BMPs</p>	<p>segregation Devices with Aggressive Street Sweeping and increased removal from streets – Project #1</p> <ul style="list-style-type: none"> <li>▪ Design of Bacteria Treatment BMP Project #2 to address bacteria load to creek</li> </ul>	<ul style="list-style-type: none"> <li>▪ Coordination w/ other Copermitees on Source Studies – Eating and Drinking Establishment</li> <li>▪ Prelim. Design of Bacteria Treatment BMP Project</li> </ul>
2009	<p>1. Conduct Increase Inspections of Commercial Landscaping, Golf Courses, and Municipal facilities in priority area and fact finding on current practices that may result in nutrient loading</p> <p>2. Expand Increased Inspections of Animal Facilities, Eating and Drinking Establishments in additional prioritized areas to reduce bacteria and nutrient loading</p>	<p>1. Continue baseline and conduct pilots in prioritized residential areas for bacteria related activities (dog waste, landscaping, trash management, nuisance flows)</p> <p>2. Conduct baseline survey of commercial landscaping, golf courses, and municipal facility and conduct pilot studies in priority drainage area. Conduct outreach – target behaviors that lead to nutrient loading and over-irrigation</p>		<ul style="list-style-type: none"> <li>▪ Conduct Survey and update inventory of eating and drinking facilities, animal related facilities, commercial landscape facilities in priority areas</li> <li>▪ Data Entry for Effectiveness Assessment of Outreach Programs</li> <li>▪ Data Entry for Effectiveness of Increased Inspections.</li> <li>▪ Conduct Study of runoff reduction program to be initiated in 2011 – Project #3.</li> <li>▪ Conduct Baseline Effectiveness Monitoring of Community targeted for Runoff Reduction program using weather-based irrigation controls and zero-scapes.</li> </ul>
2010	<p>1. Implement bacteria load reduction project in target drainage area – debris and Trash segregation Devices with Aggressive Street Sweeping and increased removal from streets – Project #1</p> <p>2. Install Bacteria Treatment BMP</p>	<p>1. Conduct outreach in targeted residential community on low impact approaches using low impact gardening and weather-based irrigation controllers.</p> <p>2. Conduct pilot programs for eating and drinking</p>	<ul style="list-style-type: none"> <li>▪ Design of Project #4 - Bacteria Treatment BMP Project to address bacteria load to creek</li> </ul>	<ul style="list-style-type: none"> <li>▪ Continue to conduct Survey and update inventory of priority sources - eating and drinking facilities, animal related facilities, commercial landscape facilities, municipal facilities in priority areas</li> <li>▪ Data Entry for Effectiveness Assessment of Outreach Programs</li> </ul>

**SECTION 5 – POTENTIAL WATERSHED ACTIVITIES**

**Table 5-1. Summary of Current and Potential Future Permit Watershed Activities  
City of San Diego**

YEAR	REQUIRED PERMIT ACTIVITIES	REQUIRED PERMIT EDUCATION ACTIVITIES	DESIGN AND O&M ACTIVITIES FOR PERMIT PROJECTS	SPECIAL STUDIES AND EFFECTIVENESS MONITORING ACTIVITIES
	Project #2 in prioritized area to reduce bacteria load.	establishments targeting behaviors that lead to bacteria loading and nuisance flows		<ul style="list-style-type: none"> <li>▪ Data Entry for Effectiveness of Increased Inspections.</li> <li>▪ Conduct Effectiveness Assessment Monitoring of bacteria Control (Project #2) to measure load reduction achieved.</li> </ul>
2011	<ol style="list-style-type: none"> <li>1. Expand increased inspection of commercial landscaping, municipal facilities and golf courses in additional target areas to reduce nutrient load</li> <li>2. Implement Runoff Reduction Program – Provide \$500 Rebate on Weather-Based Irrigation Systems – IT Controllers – Approx. 100 homes to reduce dry weather flows and bacteria loading – Project #3</li> </ol>	<ol style="list-style-type: none"> <li>1. Continue to conduct outreach in targeted residential community on low impact approaches using weather-based irrigation controller and low impact gardening</li> <li>2. Continue to conduct pilot programs for eating and drinking establishments targeting behaviors that lead to bacteria loading and nuisance flows</li> <li>3. Conduct pilots on Commercial Landscaping on new codes and program of increased inspections</li> </ol>	<ul style="list-style-type: none"> <li>▪ Maintain Projects #1 and #2 – Trash segregation Devices with Aggressive Street Sweeping and Bacteria Treatment BMP Project</li> </ul>	<ul style="list-style-type: none"> <li>▪ Conduct Effectiveness Assessment Monitoring of Community targeted for Runoff Reduction program using weather-based irrigation controls and zero-scapes – Project #3</li> <li>▪ Conduct Effectiveness Assessment Monitoring of bacteria Control Project #2 to measure load reduction achieved.</li> <li>▪ Data Entry for Effectiveness Assessment of Outreach Programs</li> <li>▪ Data Entry for Effectiveness of Increased Inspections.</li> </ul>
<b>Tijuana Watershed</b>				
2007				
2008	<ol style="list-style-type: none"> <li>1. Conduct Increased Inspections and Fact Finding of Auto-Related Facilities in Prioritized Area to determine potential source and identify and address practices that are resulting in pollutant loading (metals &amp; TSS).</li> <li>3. Conduct Increased Inspections</li> </ol>	<ol style="list-style-type: none"> <li>1. Conduct baseline and outreach to community where aggressive street sweeping planned.</li> <li>2. Conduct baseline survey of priority residential area for bacteria related activities (dog waste, landscaping, trash management, nuisance flows)</li> </ol>	<ul style="list-style-type: none"> <li>• Design of trash segregation devices on select section of proposed aggressive street sweeping - Project #1</li> </ul>	<ul style="list-style-type: none"> <li>▪ Conduct survey and update source inventory of Auto-related facilities in priority areas – data entry</li> <li>▪ Conduct survey and update source inventory of eating and drinking establishments – data entry</li> <li>▪ Data Entry for Effectiveness Assessment of Outreach Programs</li> <li>▪ Data Entry for Effectiveness of</li> </ul>



**SECTION 5 – POTENTIAL WATERSHED ACTIVITIES**

**Table 5-1. Summary of Current and Potential Future Permit Watershed Activities  
City of San Diego**

YEAR	REQUIRED PERMIT ACTIVITIES	REQUIRED PERMIT EDUCATION ACTIVITIES	DESIGN AND O&M ACTIVITIES FOR PERMIT PROJECTS	SPECIAL STUDIES AND EFFECTIVENESS MONITORING ACTIVITIES
	and Fact Finding of Eating and Drinking Establishments in prioritized area to identify and address practices that may result in bacteria loading.			Increased Inspections.
2009	<ol style="list-style-type: none"> <li>1. Expand Increased Inspections and Fact Finding of Auto-related facilities in Prioritized Area to determine potential source and identify and address practices that are resulting in pollutant loading (metals and TSS).</li> <li>2. Expand Increased Inspections and Fact Finding of Eating and Drinking Establishments in prioritized area to identify and address practices that may result in bacteria loading.</li> </ol>	<ol style="list-style-type: none"> <li>1. Continue to conduct baseline and outreach to community where aggressive street sweeping planned.</li> <li>2. Continue to conduct baseline survey of priority residential area for bacteria related activities (dog waste, landscaping, trash management, nuisance flows)</li> </ol>	<ul style="list-style-type: none"> <li>• Design of “Green Mall” project located in industrial area – targeted at auto-related businesses and reduction of metals.- Project #2</li> </ul>	<ul style="list-style-type: none"> <li>▪ Conduct survey and update source inventory of Auto-related facilities in priority areas – data entry</li> <li>▪ Conduct survey and update source inventory of eating and drinking establishments – data entry</li> <li>▪ Data Entry for Effectiveness Assessment of Outreach Programs</li> <li>▪ Data Entry for Effectiveness of Increased Inspections.</li> </ul>
2010	<ol style="list-style-type: none"> <li>1. Implement Aggressive Street Sweeping in Prioritized Sector – Project #4</li> <li>2. Install trash segregation devices on select section of proposed aggressive street sweeping – Project #1</li> </ol>	<ol style="list-style-type: none"> <li>1. Continue outreach to community where aggressive street sweeping implemented and conduct outreach of priority residential area for bacteria related activities (dog waste, landscaping, trash management, nuisance flows)</li> <li>2. Conduct pilot on auto-related facilities targeting behavior that leads to metals loading</li> </ol>		<ul style="list-style-type: none"> <li>▪ Conduct survey and update source inventory of Auto-related facilities in priority areas – data entry</li> <li>▪ Conduct survey and update source inventory of eating and drinking establishments – data entry</li> <li>▪ Data Entry for Effectiveness Assessment of Outreach Programs</li> <li>▪ Data Entry for Effectiveness of Increased Inspections.</li> </ul>

**SECTION 5 – POTENTIAL WATERSHED ACTIVITIES**

**Table 5-1. Summary of Current and Potential Future Permit Watershed Activities  
City of San Diego**

YEAR	REQUIRED PERMIT ACTIVITIES	REQUIRED PERMIT EDUCATION ACTIVITIES	DESIGN AND O&M ACTIVITIES FOR PERMIT PROJECTS	SPECIAL STUDIES AND EFFECTIVENESS MONITORING ACTIVITIES
2011	<ol style="list-style-type: none"> <li>1. Implementation of “Green Mall” project – Project #2</li> <li>2. Conduct increase inspections of Municipal facilities</li> </ol>	<ol style="list-style-type: none"> <li>1. Conduct outreach to community and businesses where the “green mall” project located in industrial area – targeted at auto-related businesses and reduction of metals.</li> <li>2. Implement outreach to auto-related facilities, eating and drinking establishments and municipal facilities of new codes.</li> </ol>	<ul style="list-style-type: none"> <li>• O&amp;M of trash segregation devises – Project #1</li> <li>• Continue aggressive street sweeping- Project #4</li> </ul>	<ul style="list-style-type: none"> <li>▪ Data Entry for Effectiveness Assessment of Outreach Programs</li> <li>▪ Data Entry for Effectiveness of Increased Inspections.</li> <li>▪ Data Entry for Green Mall and Street Sweeping Activities.</li> </ul>

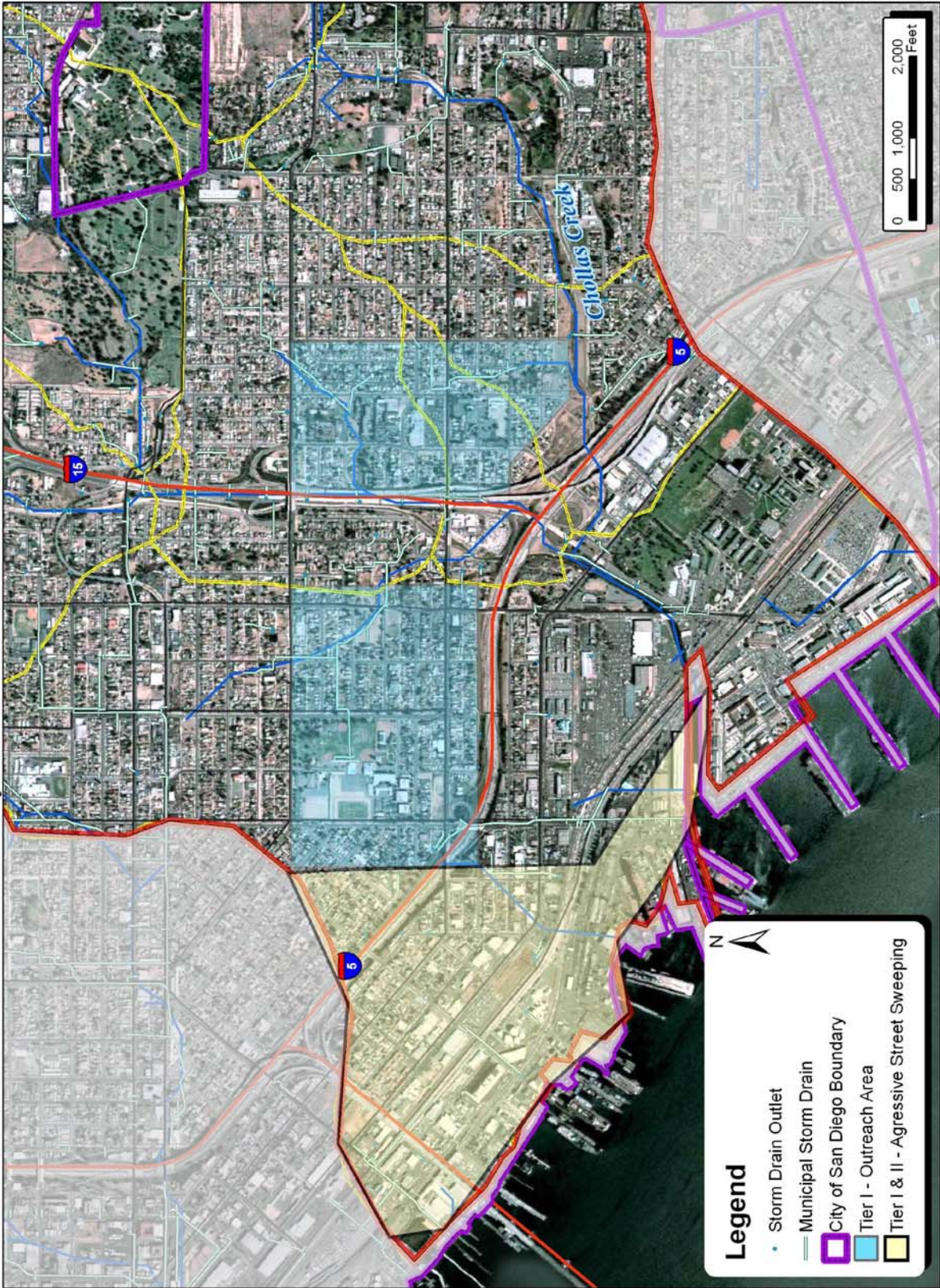
**San Diego Bay Watershed  
Management Area - Chollas Creek  
Watershed**

## SECTION 5 – POTENTIAL WATERSHED ACTIVITIES

San Diego Bay Watershed - Chollas Creek - Map Activity Index							
Tier	Map	Project #	Type of Project	Address	Property owner	Current Use	Start Year
Tier I	4.1		Outreach for Green Mall	Sector 1			2007
Tier I	5.1		Outreach for Trash Segregation	Sector 1			2010
Tier I	5.3		Outreach for Green Mall and Green Lot	Sector 1			2010
Tier I	5.1		Outreach for Trash Segregation	Sector 1			2010
Tier I	5.1		Outreach for Green Mall and Green Lot	Sector 2			2010
Tier II	4.1		Street Sweeping	Sector 1	NA	Street	2007
Tier II	4.5		Street Sweeping	Sector 2	NA	Street	2007
Tier II	5.1		Street Sweeping	Sector 1	NA	Street	2010
Tier II	5.4	1	Green Lot	41st, University - Polk (Sector 2)		Parking Lot	2010
Tier II	4.2	2	Green Mall	Dalbergia St. (Sector 1)	City	Street	2009
Tier II	4.2	3A	LID Infiltration Project	Oceanview & 30th (Sector 1)	City	Memorial Park	2009
Tier II	4.2	3	Green Lot	Oceanview & 30th (Sector 1)	City	Parking Lot	2010
Tier II	5.4	4	Green Street	Highland Ave. (Sector 2)	City	Street	2010
Tier II	5.4	5	Green Mall	54th St (Sector 2)	City	Commercial	2010
Tier II	5.4	8	Green Lot	54th St. (Sector 2)	City	Parking Lot	2011
Tier II	5.4	9	Green Street	Myrtle Ave (Sector 2)	City	Street	2011
Tier II	5.4	10	Green Mall	North 54th St. (Sector 2)	City	Commercial	2011
Tier II	5.3	12B	Street Sweeping (New Vac Truck)	Sector 2	City	Street	2011
Tier II	5.2	13	Green Lot	National Ave (Sector 1)	City	Parking Lot	2011
Tier II	5.4	14	Green Street	University Ave (Sector 2)	City	Street	2011
Tier II	5.2	15	Green Mall	National Ave (Sector 1)	City	Commercial	2011
Tier III	5.2	6	Diversions	Sector 1	NA	Storm Drain	2010
Tier III	5.4	6	Diversions	Sector 2	NA	Storm Drain	2010
Tier II	5.2	7	Trash Segregation	National & 28th (Sector 1)	City	Street	2010
Tier III	5.2	11	Diversions	Sector 1	NA	Storm Drain	2011
Tier III	5.2	11	Diversions	Sector 2	NA	Storm Drain	2011
Tier II	5.4	12	Trash Segregation	Orange Ave (Sector 2)		Street	2010
Tier II	5.4	12A	Trash Segregation	Abtech(Hillcrest Avenue) Sector 2	City	Street	2008
Tier III	5.2	16	Diversions	Sector 1	NA	Storm Drain	2011
Tier III	5.4	16	Diversions	Sector 2	NA	Storm Drain	2011
Tier II	5.4	17	Trash Segregation	Fairmount Ave. (Sector 2)	City	Street	2011
Tier II	5.2	18	LID Infiltration Project	Ash & Bancroft St	City	Commercial	2010
* Yellow Highlighted Projects indicate Permit Activities							
* Non Highlighted Zone indicate TMDL Activities							
*Green Highlighting indicates Initial Activities							
*Orange Highlighting indicates Future Potential Activities							

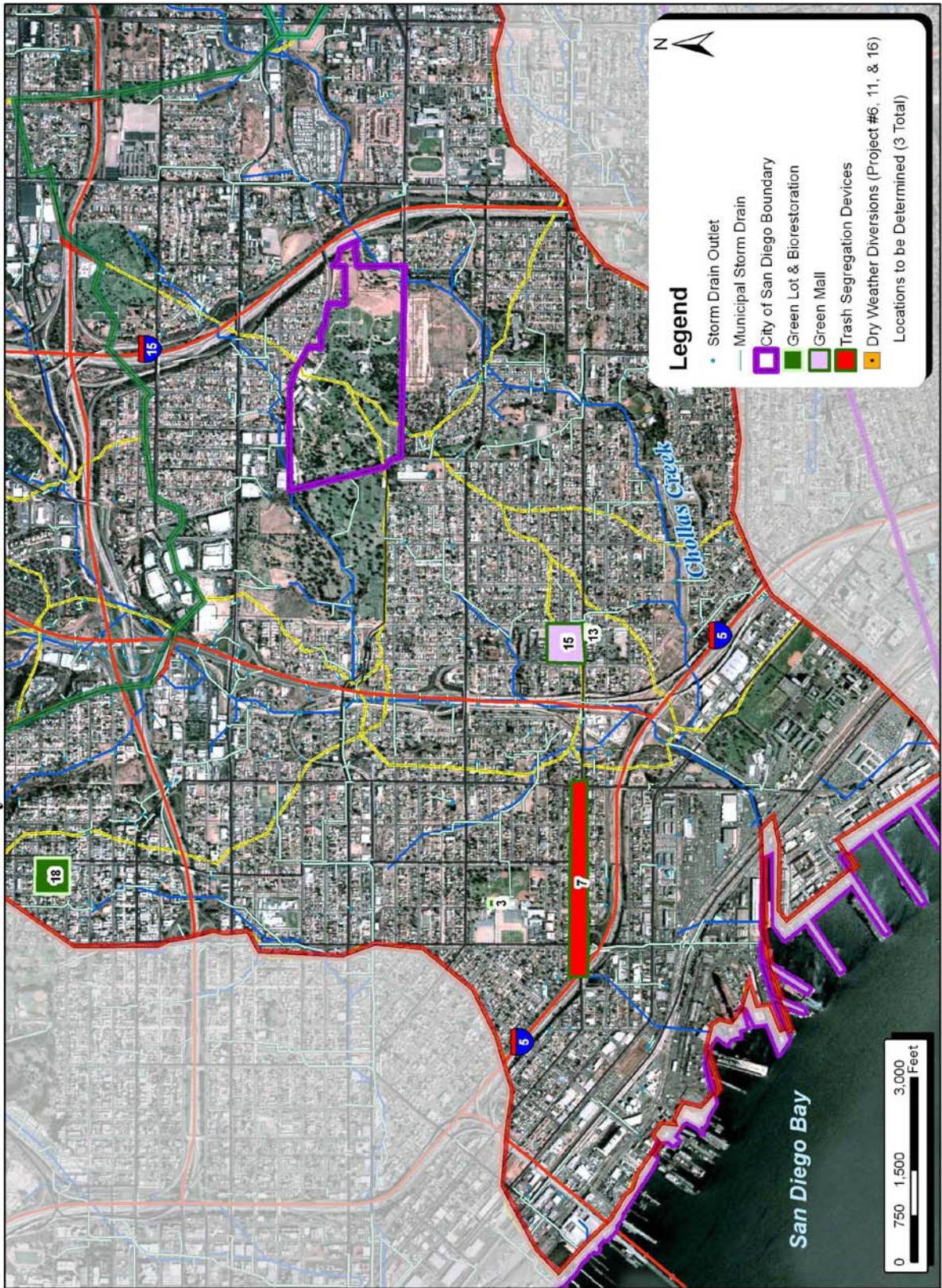
SECTION 5 – POTENTIAL WATERSHED ACTIVITIES

Chollas Creek Watershed - Priority Sector I - Tier I & II - Future Potential Permit Activities



**SECTION 5 – POTENTIAL WATERSHED ACTIVITIES**

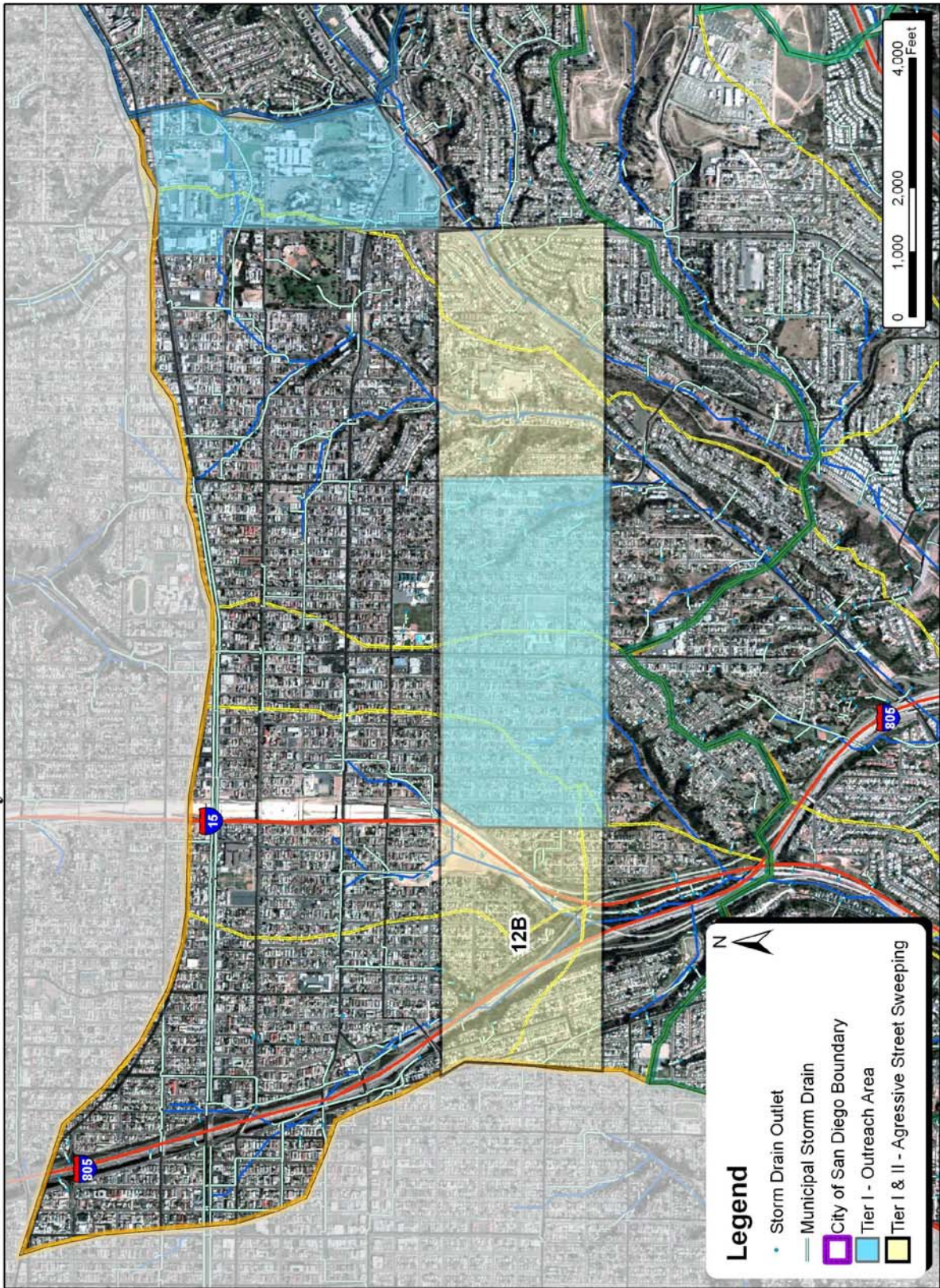
**Chollas Creek Watershed - Priority Sector I - Tier II & III - Future Potential TMDL Activities**



**Map 5.2**

**SECTION 5 – POTENTIAL WATERSHED ACTIVITIES**

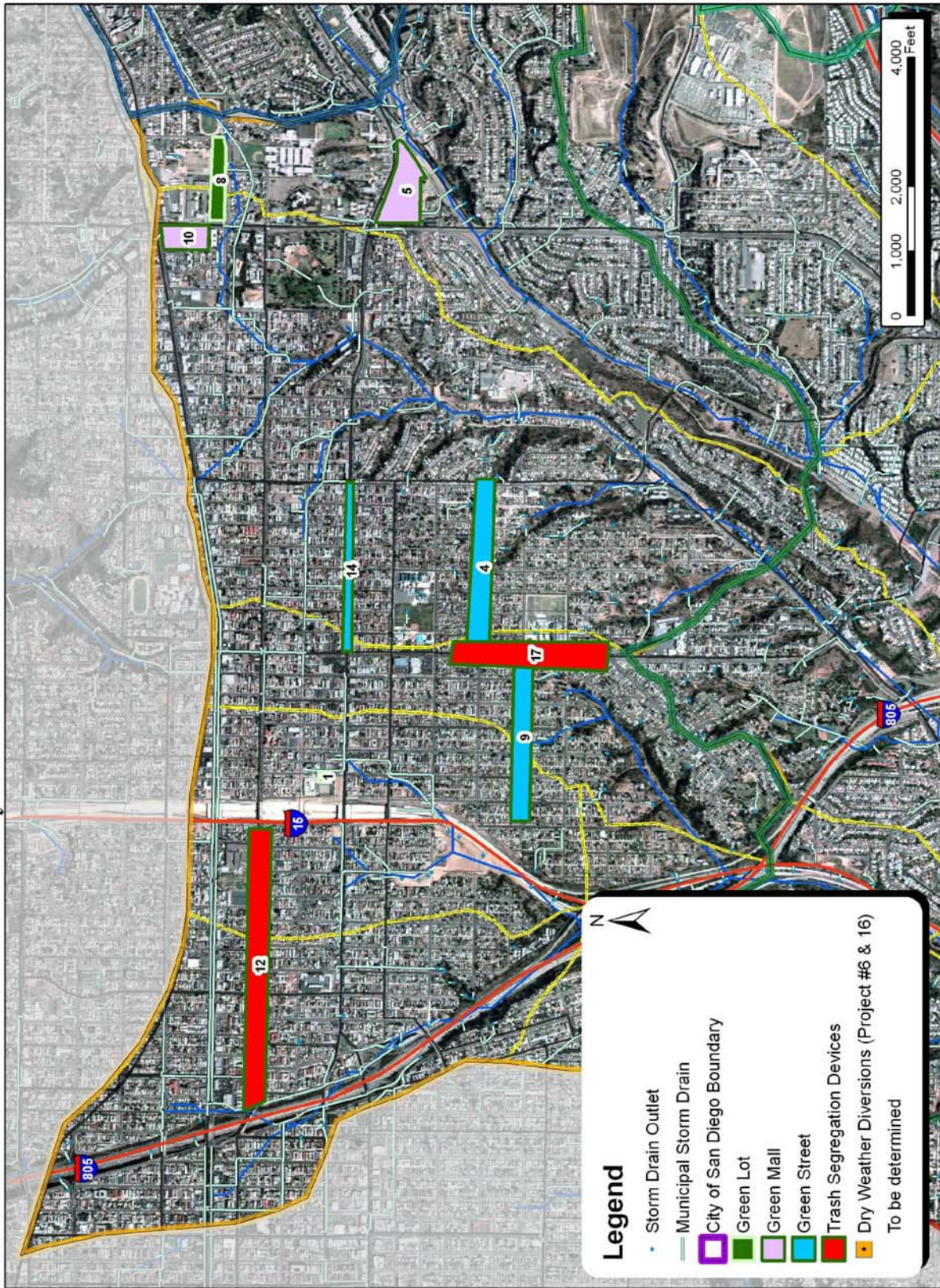
**Chollas Creek Watershed - Priority Sector II - Tier I & II - Future Potential Permit Activities**



**Map 5.3**

**SECTION 5 – POTENTIAL WATERSHED ACTIVITIES**

**Chollas Creek Watershed - Priority Sector II - Tier II & III - Future Potential TMDL Activities**



**Map 5.4**



**SECTION 5 – POTENTIAL WATERSHED ACTIVITIES**

**54<sup>th</sup> Street and University Avenue**



**Map 5.5**

**SECTION 5 – POTENTIAL WATERSHED ACTIVITIES**

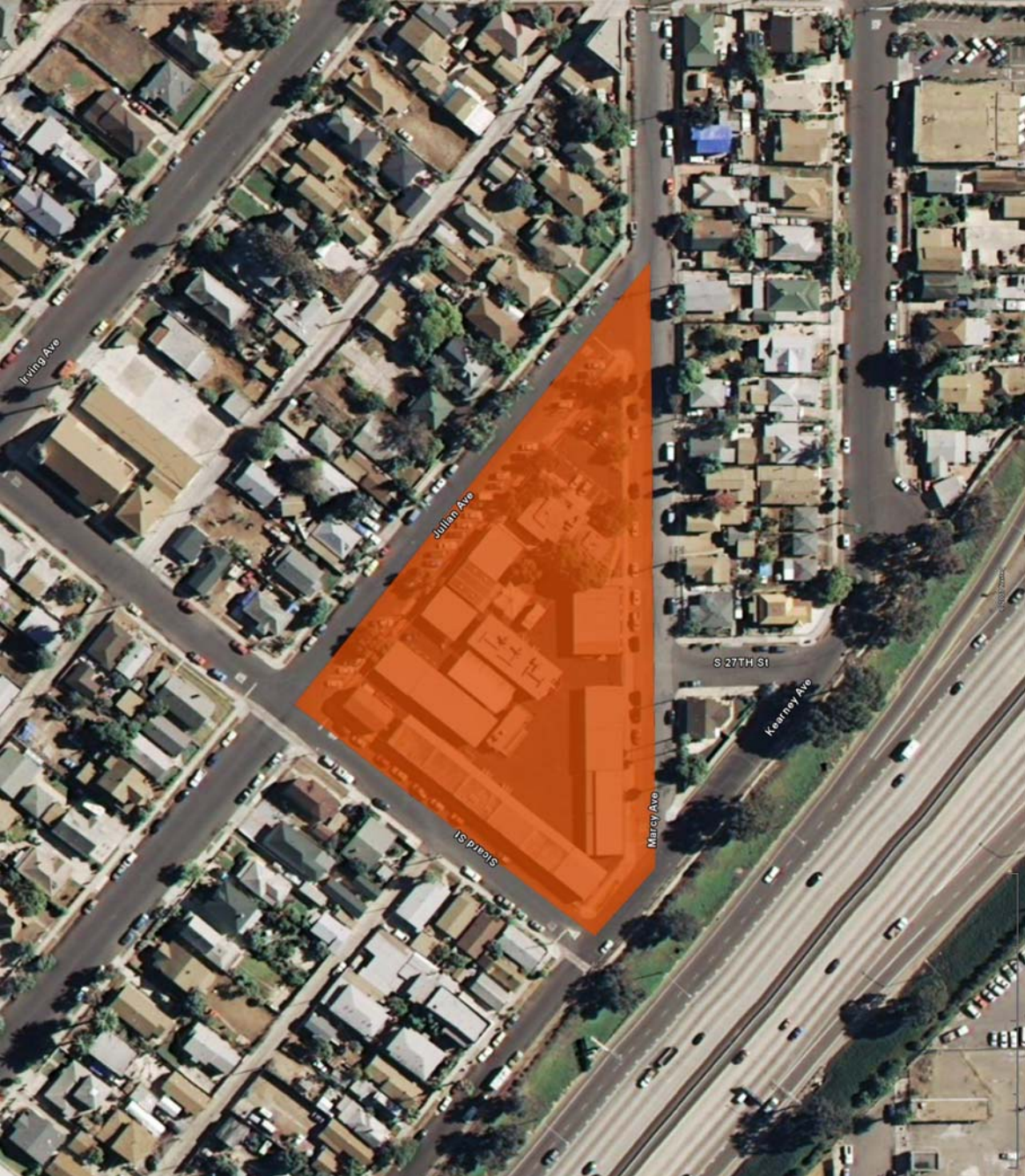
Acacia Street and 36<sup>th</sup> Street



Map 5.6

**SECTION 5 – POTENTIAL WATERSHED ACTIVITIES**

**Julian Avenue and Sicard Street**



**Map 5.7**

**SECTION 5 – POTENTIAL WATERSHED ACTIVITIES**

**Martin Avenue and Thirty-Second Street**



**Map 5.8**

**SECTION 5 – POTENTIAL WATERSHED ACTIVITIES**

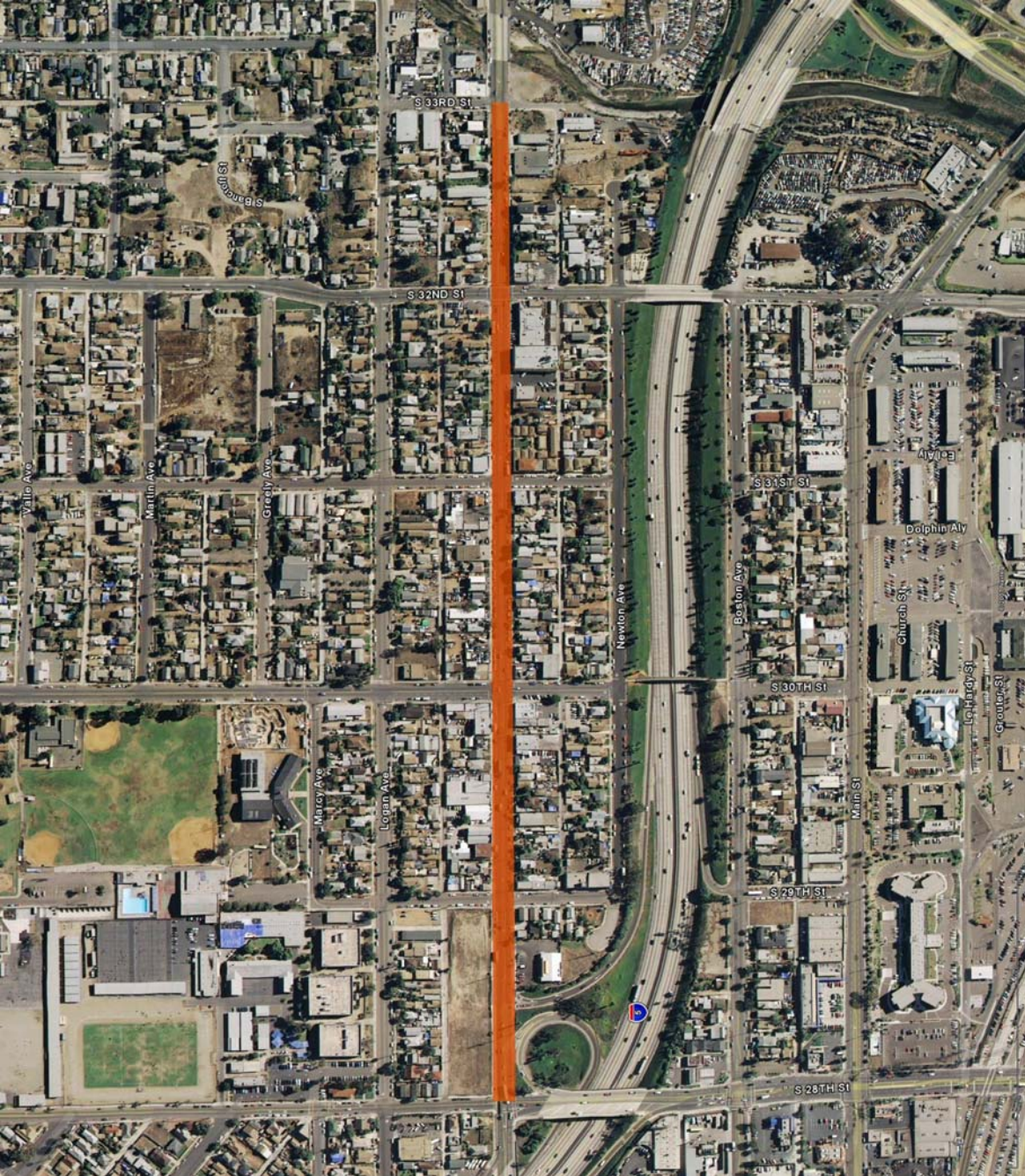
**Memorial Park**



**Map 5.9**

**SECTION 5 – POTENTIAL WATERSHED ACTIVITIES**

**National Avenue and 28<sup>th</sup> Street**



**Map 5.10**

**SECTION 5 – POTENTIAL WATERSHED ACTIVITIES**



**National Avenue and 35<sup>th</sup> Street**

**Map 5.11**

**SECTION 5 – POTENTIAL WATERSHED ACTIVITIES**

**Ocean View Boulevard and 40<sup>th</sup> Street**

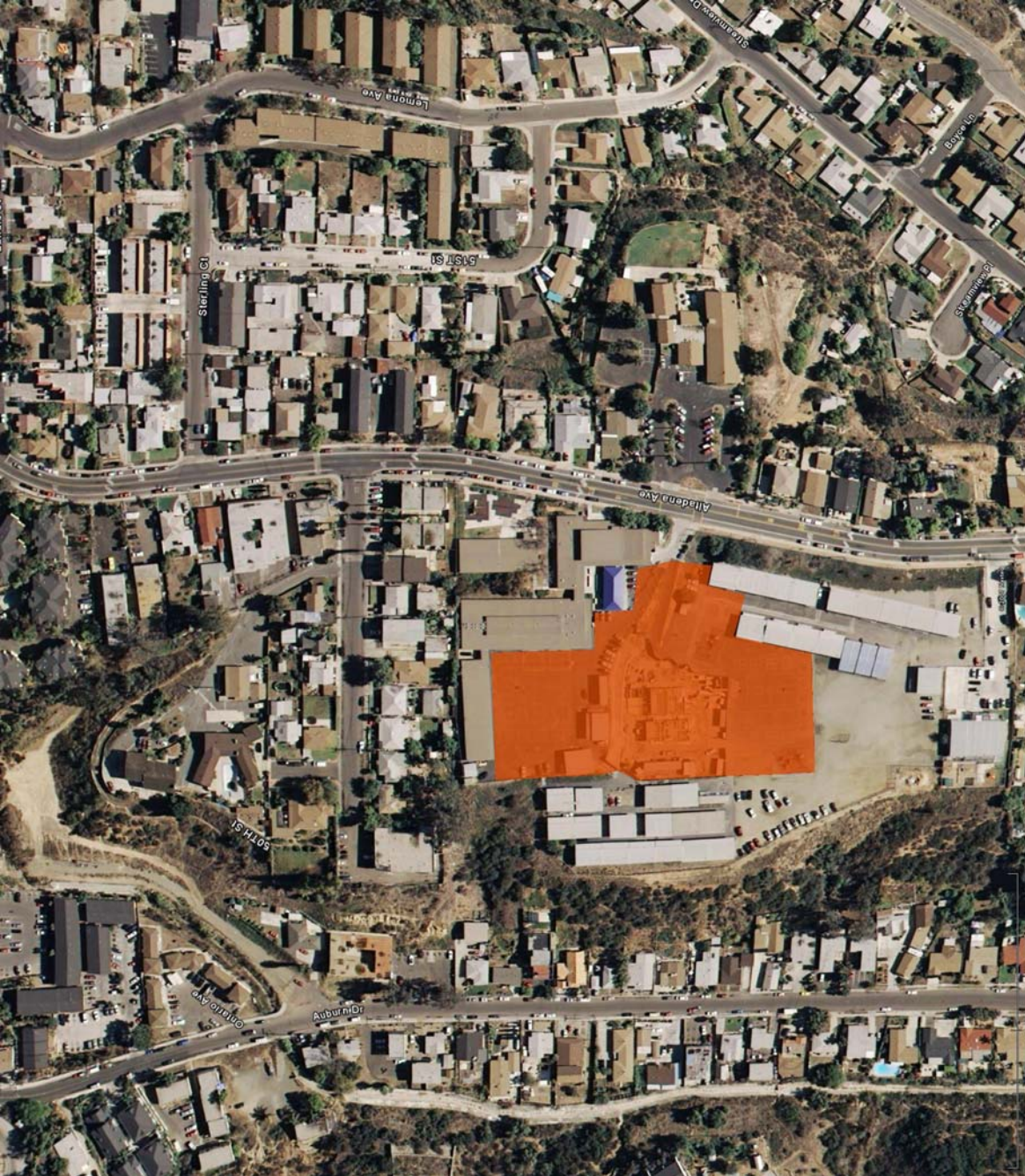


**Map 5.12**



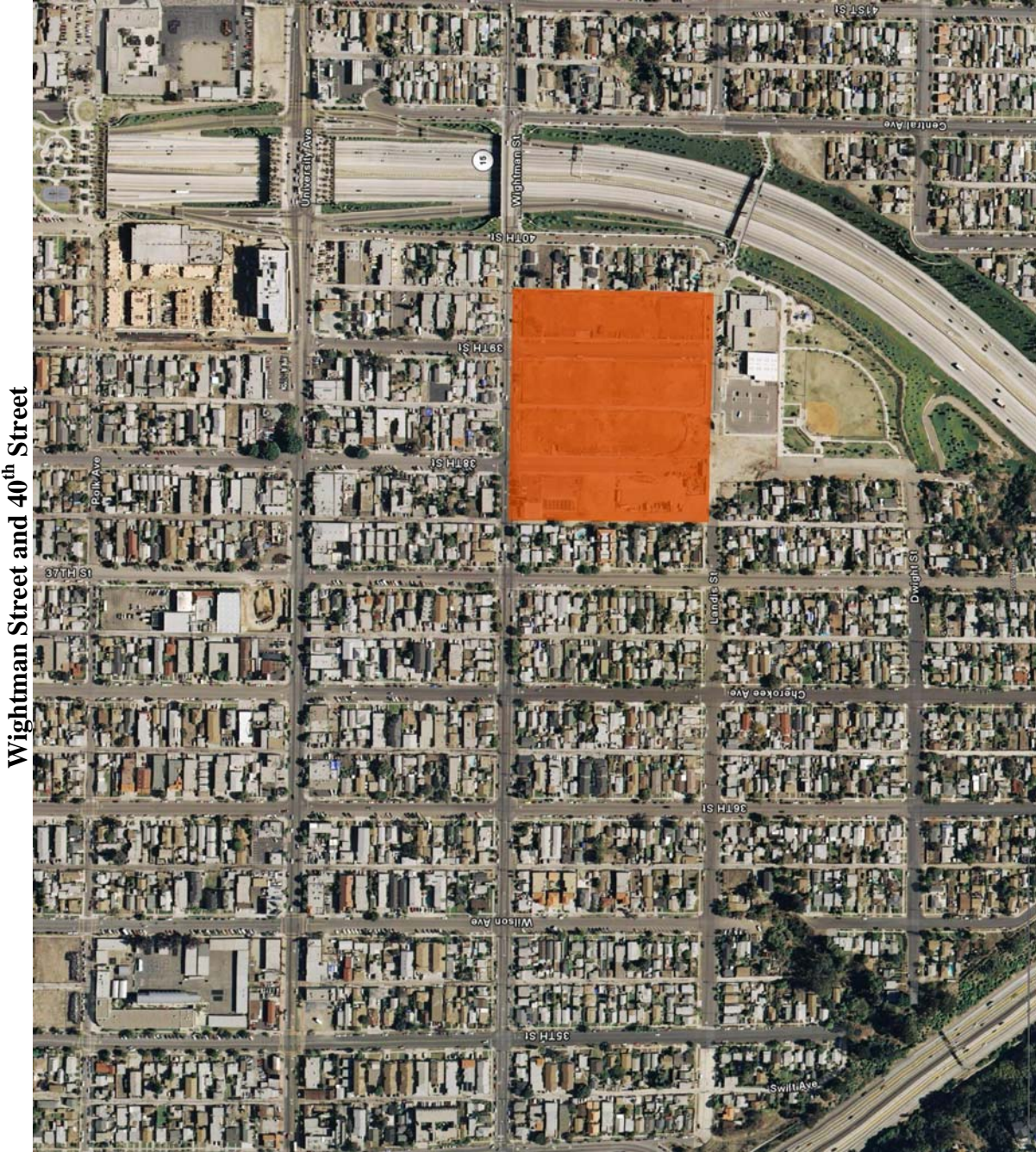
**SECTION 5 – POTENTIAL WATERSHED ACTIVITIES**

**Altadena Avenue and Sterling Court**



**Map 5.13**

**SECTION 5 – POTENTIAL WATERSHED ACTIVITIES**



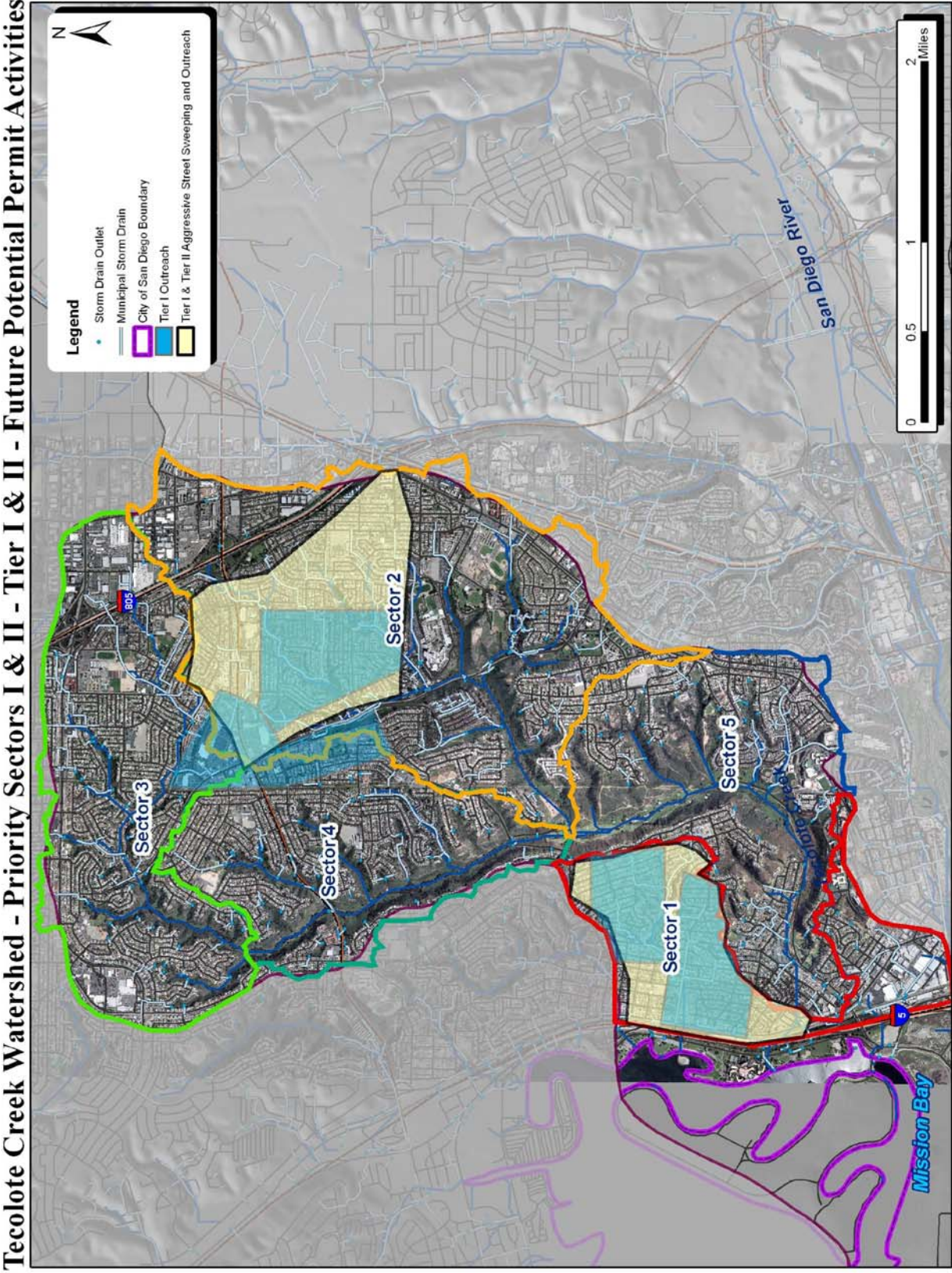
Map 5.14

# **Mission Bay Watershed Management Area - Tecolote Creek Watershed**

**SECTION 5 – POTENTIAL WATERSHED ACTIVITIES**

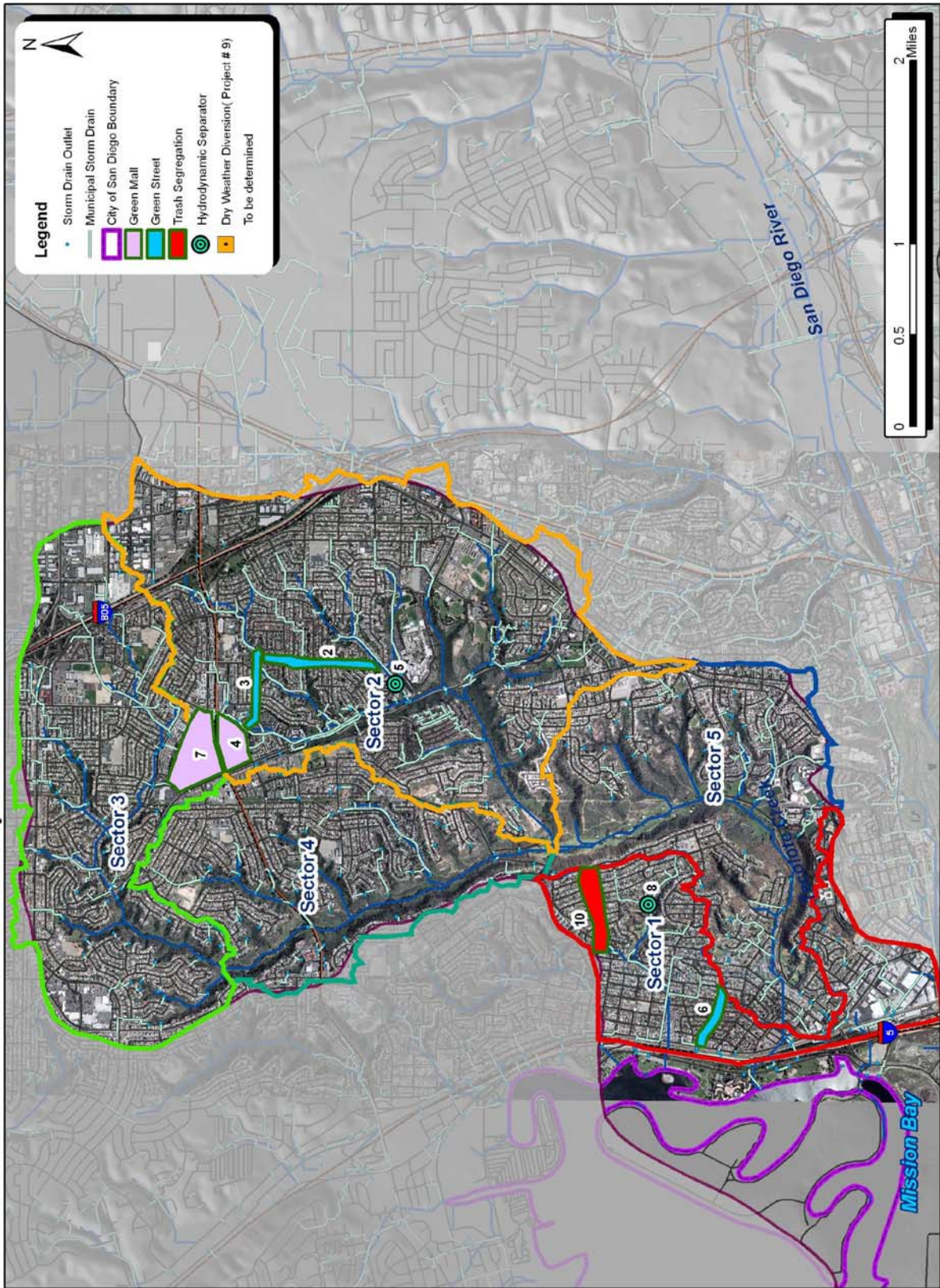
Mission Bay Watershed - Tecolote Creek - Map Activity Index							
Tier	Map	Project #	Type of Project	Address	Property owner	Current Use	Start Year
Tier I	4.8		Outreach for Green Street	Sector 2			2008
Tier I	5.15		Outreach for Green Street	Sector 2			2010
Tier I	5.15		Outreach for Trash Segregation	Sector 1			2010
Tier I	5.15		Outreach for Green Mall	Sector 1			2010
Tier I	5.15		Outreach for Green Street	Sector 1			2010
Tier I	4.8	11	Rain Barrels	Rose Canyon	City	Maintenance Yard	2008
Tier II	5.15		Street Sweeping	Sector 1	City	Street	2010
Tier II	5.15		Street Sweeping	Sector 2	City	Street	2011
Tier II	4.9	1	Green Street	Mt. Abernathy	City	Street	2009
Tier II	5.16	2	Green Street	Auberndale Ave (sector 2)	City	Street	2011
Tier II	5.16	3	Green Street	Mt Aguilar Ave (sector 2)	City	Street	2010
Tier II	5.16	4	Green Mall	Balboa & Genesee (sector 2)		Commercial	2010
Tier II	5.16	6	Green Street	Chicago (sector 1)	City	Street	2011
Tier II	5.16	7	Green Mall	Balboa & Genesee N (sector 2)		Commercial	2011
Tier III	5.16	8	Erosion and Sediment Control	Sector 1	NA	Storm Drain	2011
Tier III	4.9		Trash Cleanups	Sector 2	NA		2009
Tier III	5.16	5	Erosion and Sediment Control	Sector 2	NA	Storm Drain	2010
Tier III	5.16	9	Diversions	Visitors Center	NA	Storm Drain	2010
Tier III	5.16	9	Diversions	Cudahy Creek	NA	Storm Drain	2010
Tier III	5.16	10	Trash Segregation	Huxley (sector 1)	City	Street	2011
* Yellow Highlighted Projects indicate Permit Activities							
* Non Highlighted Zone indicate TMDL Activities							
*Green Highlighting indicates Initial Activities							
*Orange Highlighting indicates Future Potential Activities							

**SECTION 5 – POTENTIAL WATERSHED ACTIVITIES**



**SECTION 5 – POTENTIAL WATERSHED ACTIVITIES**

**Tecolote Creek Watershed - Priority Sectors 1 & II - Tier II & III - Future Potential TMDL Activities**



**Map 5.16**

**Mission Watershed Management  
Area – La Jolla Shores ASBS  
Watershed**

**SECTION 5 – POTENTIAL WATERSHED ACTIVITIES**

Mission Bay Watershed - La Jolla Shores - Map Activity Index									
Tier	Map	Project #	Type of Project	Address	Property owner	Current Use	Start Year		
Tier I	4.10		Outreach for Green Lot				2008		
Tier I	5.17		Outreach for Green Street				2010		
Tier II	5.17		Street Sweeping (New Vac truck)	La Jolla	NA	Street	2010		
Tier II	5.17		Street Sweeping	La Jolla	NA	Street	2011		
Tier II	4.11	1	Green Lot	First Half Kellogg parking lot	City	Parking Lot	2008		
Tier II	5.18	3	Green Lot	Second Half Kellogg parking lot	City	Parking Lot	2009		
Tier II	5.18	6	Green Street	La Jolla Shores/Torrey Pines	City	Street	2010		
Tier II	5.18	9	Green Street	La Jolla Shores - North	City	Street	2011		
Tier II	5.18	12	Runoff Reduction Project	TBD	Residential Community	Residences	2011		
Tier II	5.18	13	Runoff Reduction Project	Avenida De La Playa	Residential Community	Residences	2011		
Tier III	4.11	2	Diversions	1624 Torrey Pines Rd	NA	Storm Drain	2008		
Tier III	4.11	2	Diversions	Torrey Pines Rd & Charlotte St	NA	Storm Drain	2008		
Tier III	4.11	2	Diversions	La Jolla Beach & Tennis Club	NA	Storm Drain	2008		
Tier III	4.11	2	Diversions	Camino Del Oro	NA	Storm Drain	2008		
Tier III	5.18	4	Diversions	La Jolla Shores	NA	Storm Drain	2009		
Tier III	5.18	4	Diversions	La Jolla Shores (North)	NA	Storm Drain	2009		
Tier III	5.18	5	Diversions	Avenida De La Playa (Upgrade)	NA	Storm Drain	2010		
Tier III	5.18	7	Erosion and Sediment Control	TBD	City	Storm Drain	2010		
Tier II	5.18	8	Trash Segregation	Avenida De La Playa	City	Street	2010		
Tier II	5.18	10	Trash Segregation	TBD	City	Street	2011		
Tier II	5.18	11	Trash Segregation	Cliffridge	City	Street	2011		
* Yellow Highlighted Projects indicate Permit Activities									
* Non Highlighted Zone indicate TMDL Activities									
*Green Highlighting indicates Initial Activities									
*Orange Highlighting indicates Future Potential Activities									



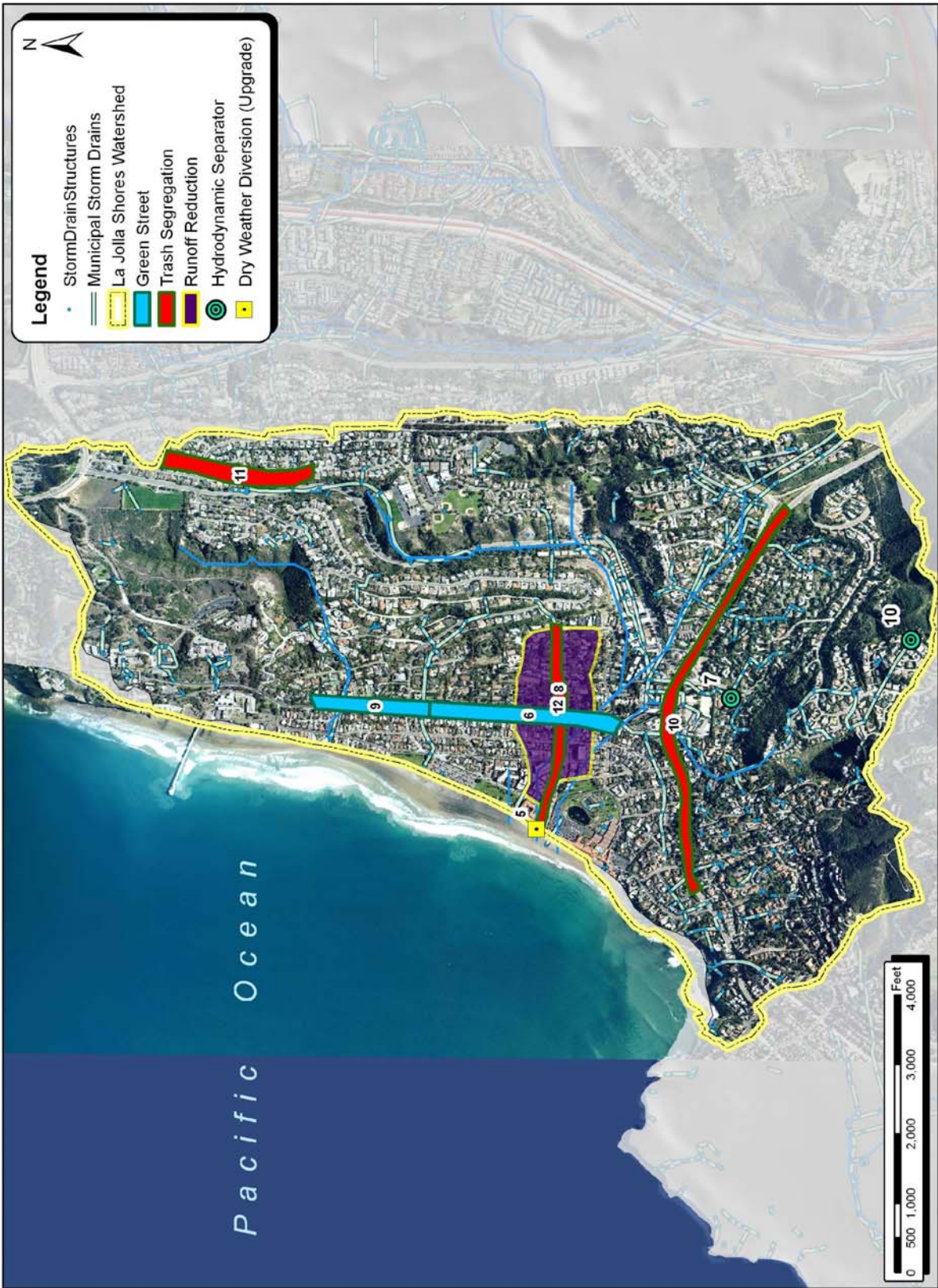
SECTION 5 – POTENTIAL WATERSHED ACTIVITIES

La Jolla Shores Watershed - Tier I & II - Future Potential Permit Activities



**SECTION 5 – POTENTIAL WATERSHED ACTIVITIES**

**La Jolla Shores Watershed - Tier II & III - Future Potential TMDL Activities**



**Map 5.18**

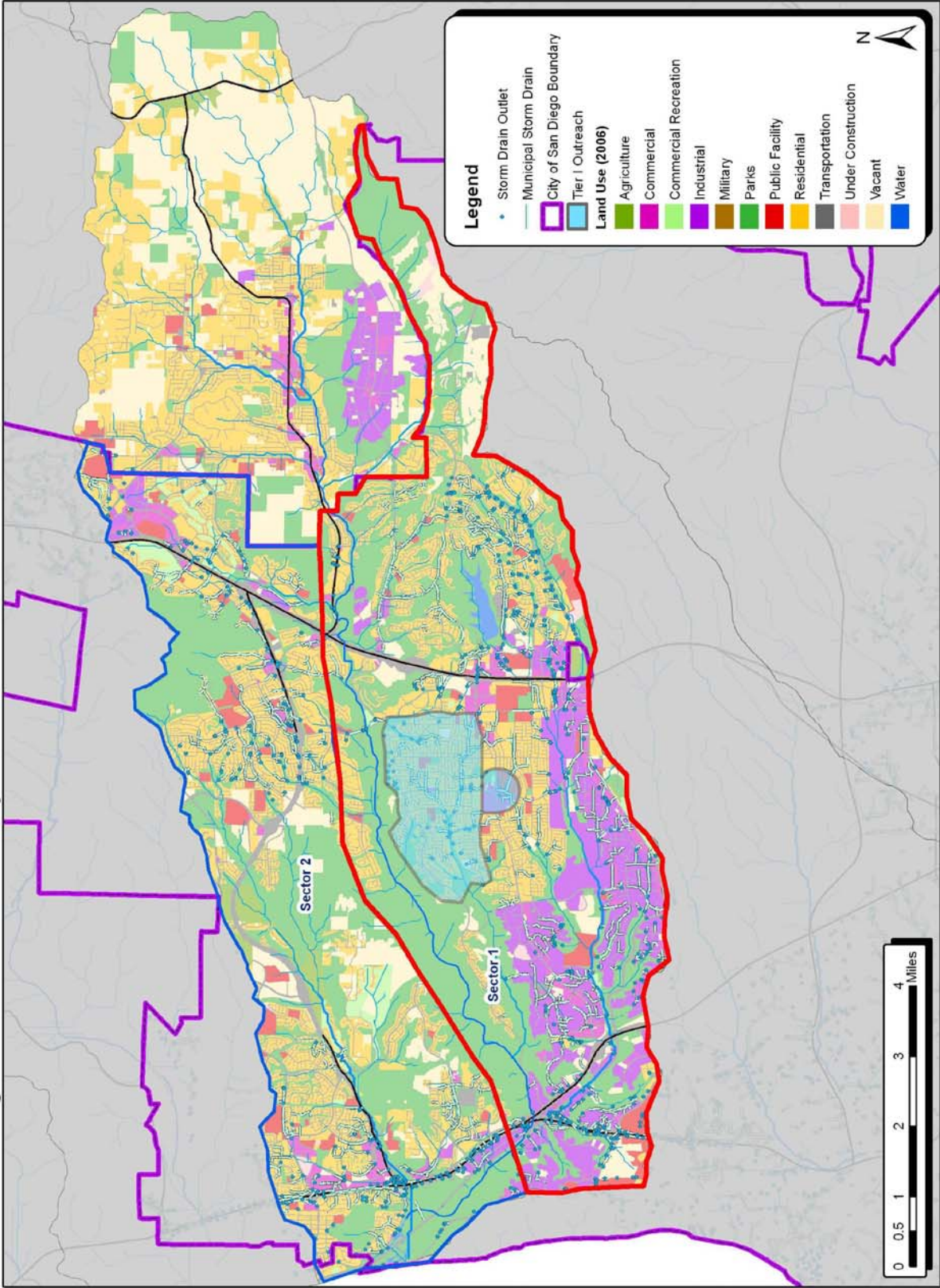
# **Los Peñasquitos Watershed**

**SECTION 5 – POTENTIAL WATERSHED ACTIVITIES**

Los Penasquitos - Map Activity Index							
Tier	Map	Project #	Type of Project	Address	Property owner	Current Use	Start Year
Tier I	5.19		Outreach				2009
Tier I	5.19		Outreach for Runoff Reduction				2010
Tier I	5.19		Outreach for Green Mall				2010
Tier II	5.20	3	Runoff Reduction	Mira Mesa Blvd. - Sector 1	Residential Community	Residences	2010
Tier II	5.20	5	Green Mall	Mira Mesa Blvd. - Sector 1		Commercial	2011
Tier III	5.20	1	Erosion and Sediment Controls	Scripps Lake - Sector 1	NA	Storm Drain	2010
Tier III	5.20	1	Erosion and Sediment Controls	Carmel Valley - Sector 2	NA	Storm Drain	2010
Tier III	5.20	2	Erosion and Sediment Controls	Avenida Magnifica - Sector 1	NA	Storm Drain	2010
Tier III	5.20	2	Erosion and Sediment Controls	Timberlake - Sector 1	NA	Storm Drain	2010
Tier III	5.19	4	Erosion and Sediment Controls	Sorrento Valley -Sector 2	NA	Storm Drain	2011
Tier III	5.19	4	Erosion and Sediment Controls	Black Mountain Rd - Sector 2	NA	Storm Drain	2011
* Yellow Highlighted Projects indicate Permit Activities							
* Non Highlighted Zone indicate TMDL Activities							
*Green Highlighting indicates Initial Activities							
*Orange Highlighting indicates Future Potential Activities							

**SECTION 5 – POTENTIAL WATERSHED ACTIVITIES**

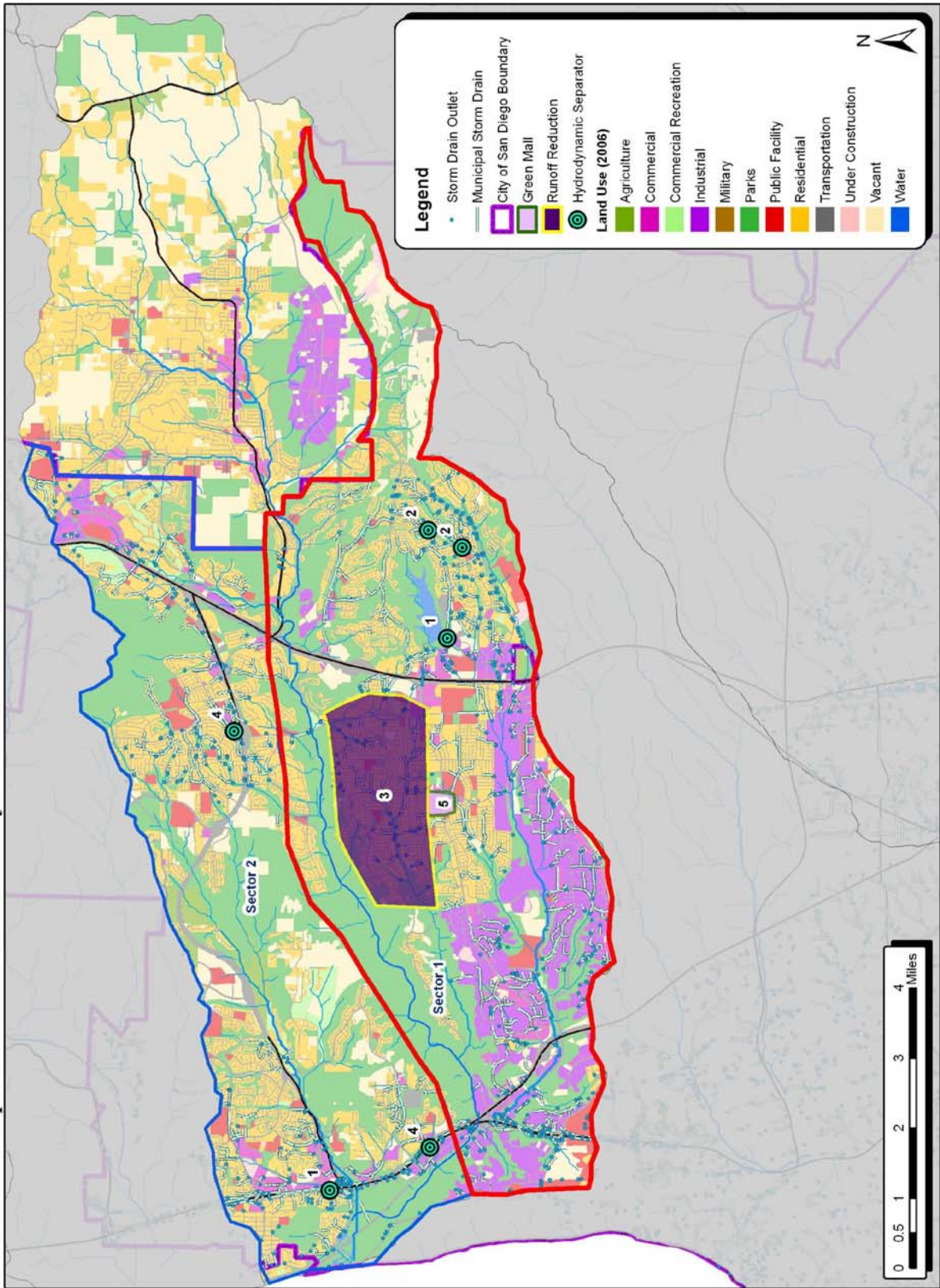
**Los Penasquitos Watershed - Priority Sectors I & II - Tier I & II - Future Potential Permit Activities**



**Map 5.19**

**SECTION 5 – POTENTIAL WATERSHED ACTIVITIES**

**Los Penasquitos Watershed - Priority Sectors I & II - Tier II & III - Future Potential TMDL Activities**



**Map 5.20**

# **San Diego River Watershed**

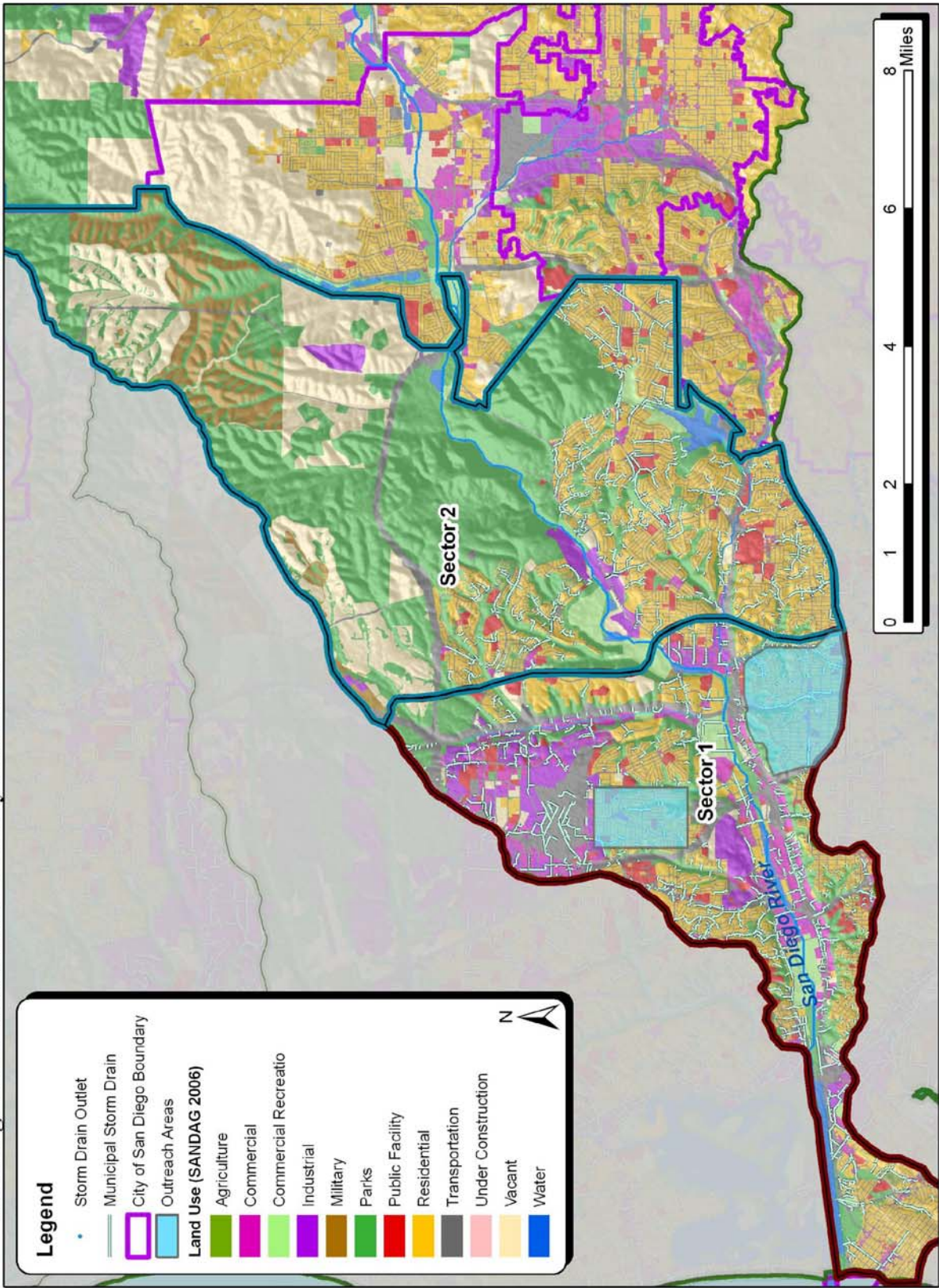
**SECTION 5 – POTENTIAL WATERSHED ACTIVITIES**

San Diego River - Map Activity Index							
Tier	Map	Project #	Type of Project	Address	Property owner	Current Use	Start Year
Tier I	5.21		Outreach for Green Mall	Sector 1			2010
Tier I	5.21		Outreach for Runoff Reduction	Sector 1			2010
Tier II	5.22	3	Green Mall	Balboa avenue and Ruffin		Commercial	2011
Tier II	5.22	5	Runoff Reduction	Sector 1	Residential Community	Residences	2010
Tier II	5.22	1	Trash Segregation	Mission Gorge - sector 2	City	Street	2010
Tier III	5.22	2	Erosion and Sediment Controls	Waring - Sector 2	NA	Storm Drain	2010
Tier III	5.22	2	Erosion and Sediment Controls	Murray Canyon - Sector 1	NA	Storm drain	2010
Tier III	5.22	4	Erosion and Sediment Controls	Mission Gorge - Sector 2	NA	Storm Drain	2011
Tier III	5.22	4	Erosion and Sediment Controls	Lake Shore - Sector 2	NA	Storm Drain	2011
* Yellow Highlighted Projects indicate Permit Activities							
* Non Highlighted Zone indicate TMDL Activities							
*Green Highlighting indicates Initial Activities							
*Orange Highlighting indicates Future Potential Activities							



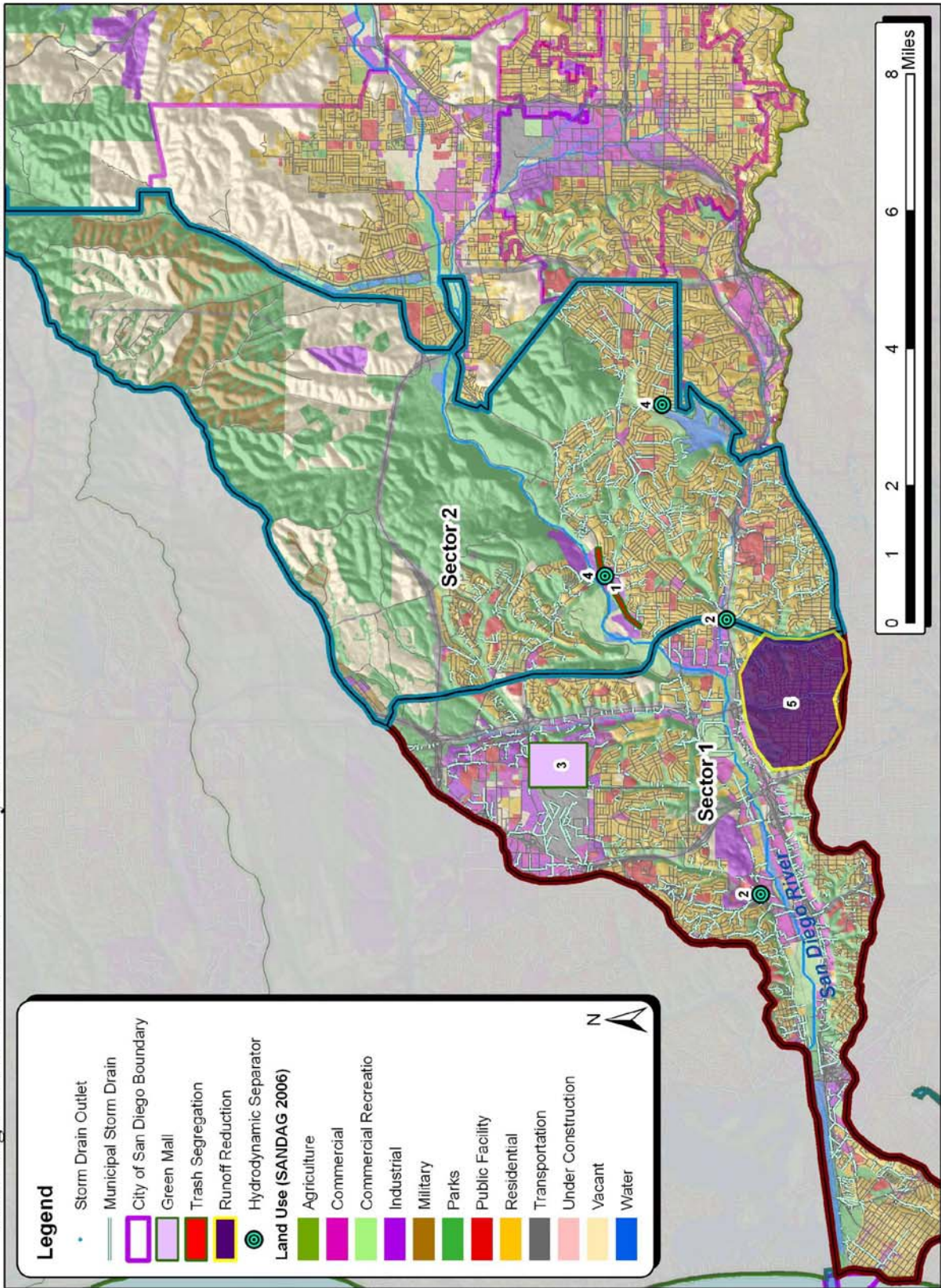
**SECTION 5 – POTENTIAL WATERSHED ACTIVITIES**

**San Diego River Watershed – Priority Sectors I & II - Tier I & II - Future Potential Permit Activities**



**SECTION 5 – POTENTIAL WATERSHED ACTIVITIES**

**San Diego River Watershed – Priority Sectors I & II – Tier II & III – Future Potential TMDL Activities**



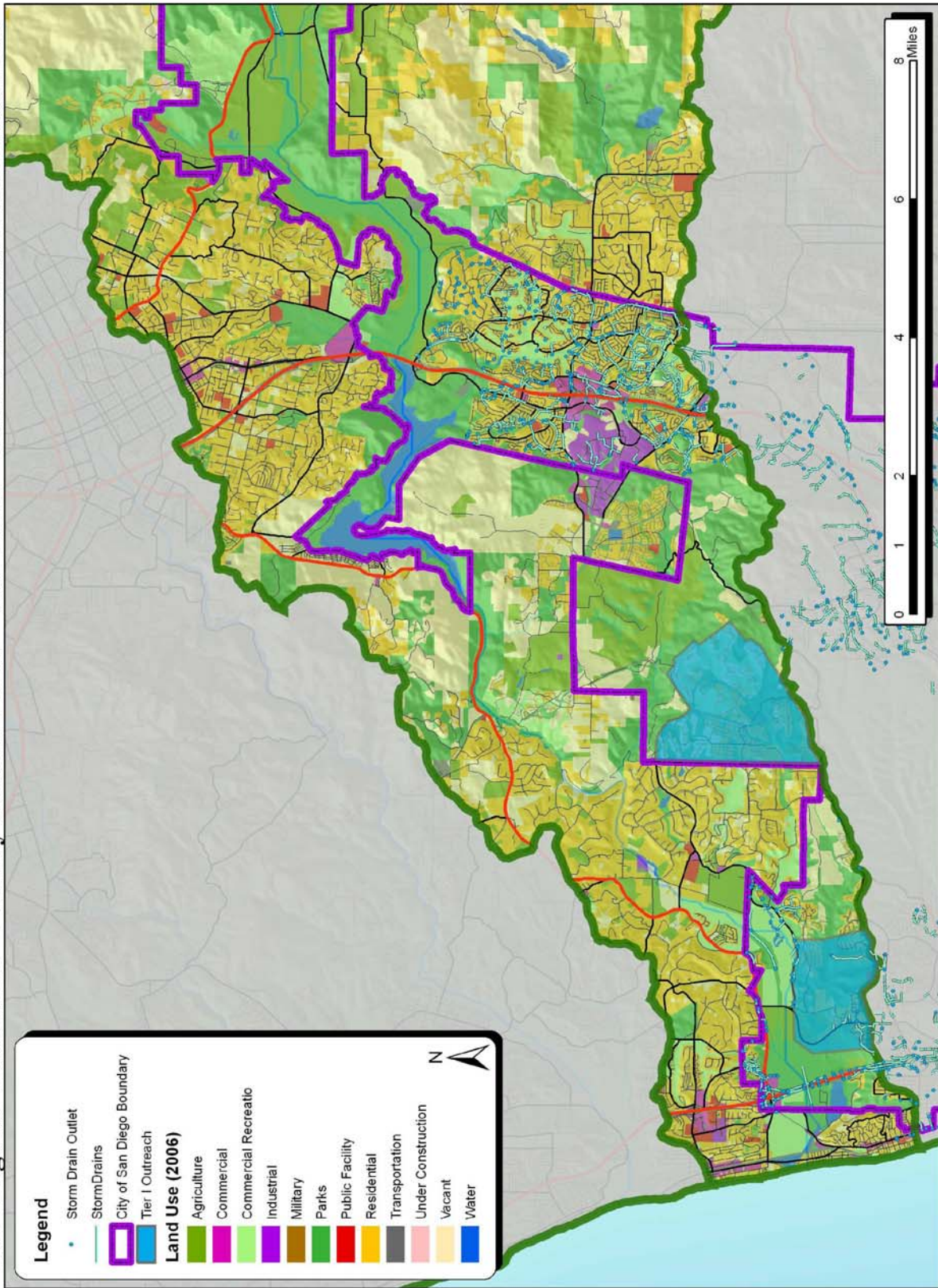
# **San Dieguito Watershed**

**SECTION 5 – POTENTIAL WATERSHED ACTIVITIES**

San Dieguito - Map Activity index							
Tier	Map	Project #	Type of Project	Address	Property owner	Current Use	Start Year
Tier I	5.23		Outreach for Trash Segregation				2010
Tier I	6.23		Outreach for Runoff Reduction				2010
Tier II	5.24	3	Runoff Reduction	Sector 2	Residential Community	Residences	2011
Tier II	5.24	5	Runoff Reduction	Sector 2	Residential Community	Residences	2011
Tier III	5.24	1	Trash Segregation	Sector 2	City	Street	2010
Tier III	5.24	2	Sediment and Peak Flow	Sector 2	NA	Storm Drain	2010
Tier III	5.24	4	Erosion and Sediment Control	Sector 2	NA	Storm Drain	2011
* Yellow Highlighted Projects indicate Permit Activities							
* Non Highlighted Zone indicate TMDL Activities							
*Green Highlighting indicates Initial Activities							
*Orange Highlighting indicates Future Potential Activities							

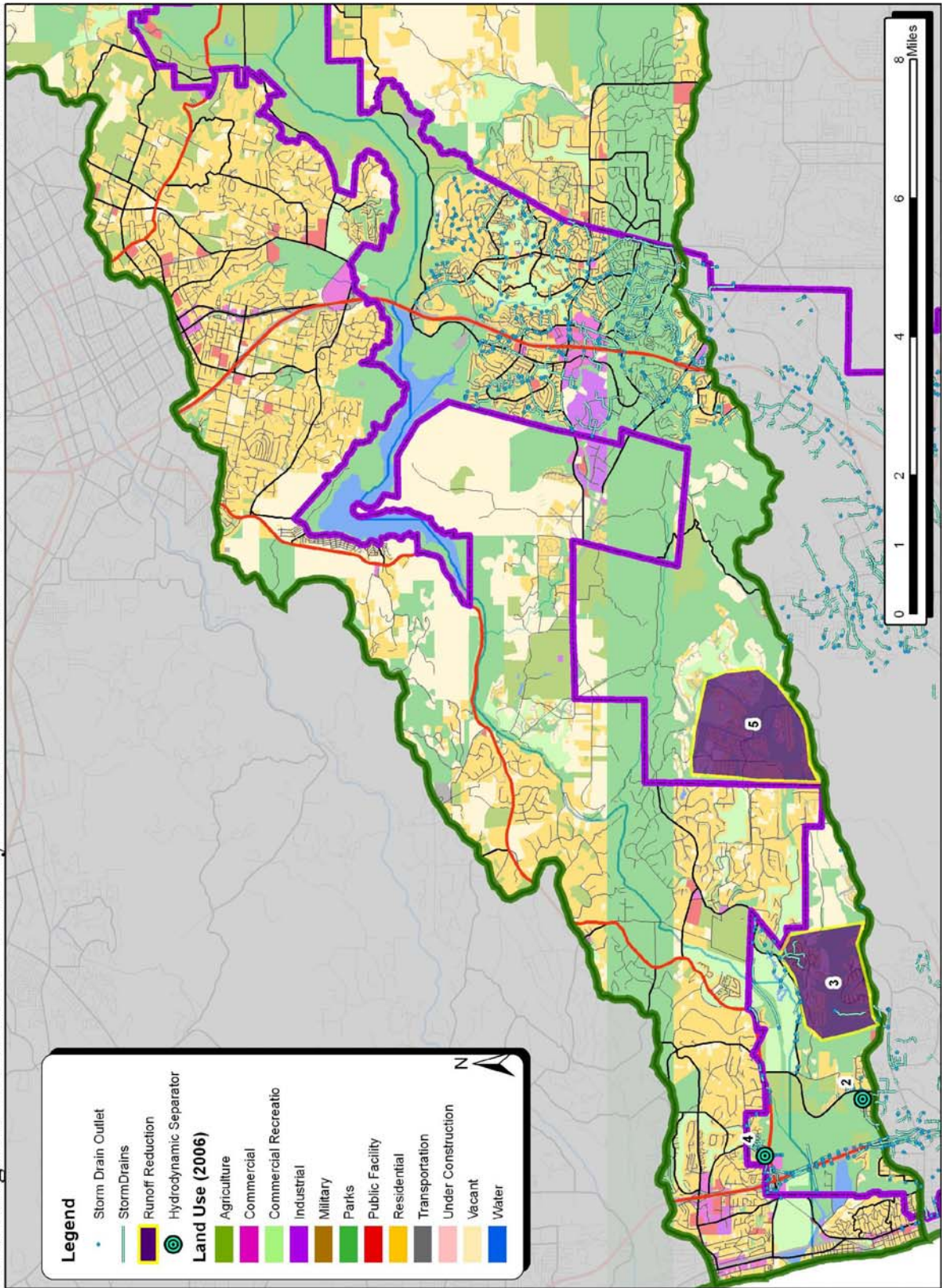
**SECTION 5 – POTENTIAL WATERSHED ACTIVITIES**

**San Diego Watershed - Priority Sectors I & II - Tier I & II - Future Potential Permit Activities**



**SECTION 5 – POTENTIAL WATERSHED ACTIVITIES**

**San Diegouito Watershed - Priority Sectors I & II - Tier II & III - Future Potential TMDL Activities**



**Map 5.24**

# **Tijuana Watershed**

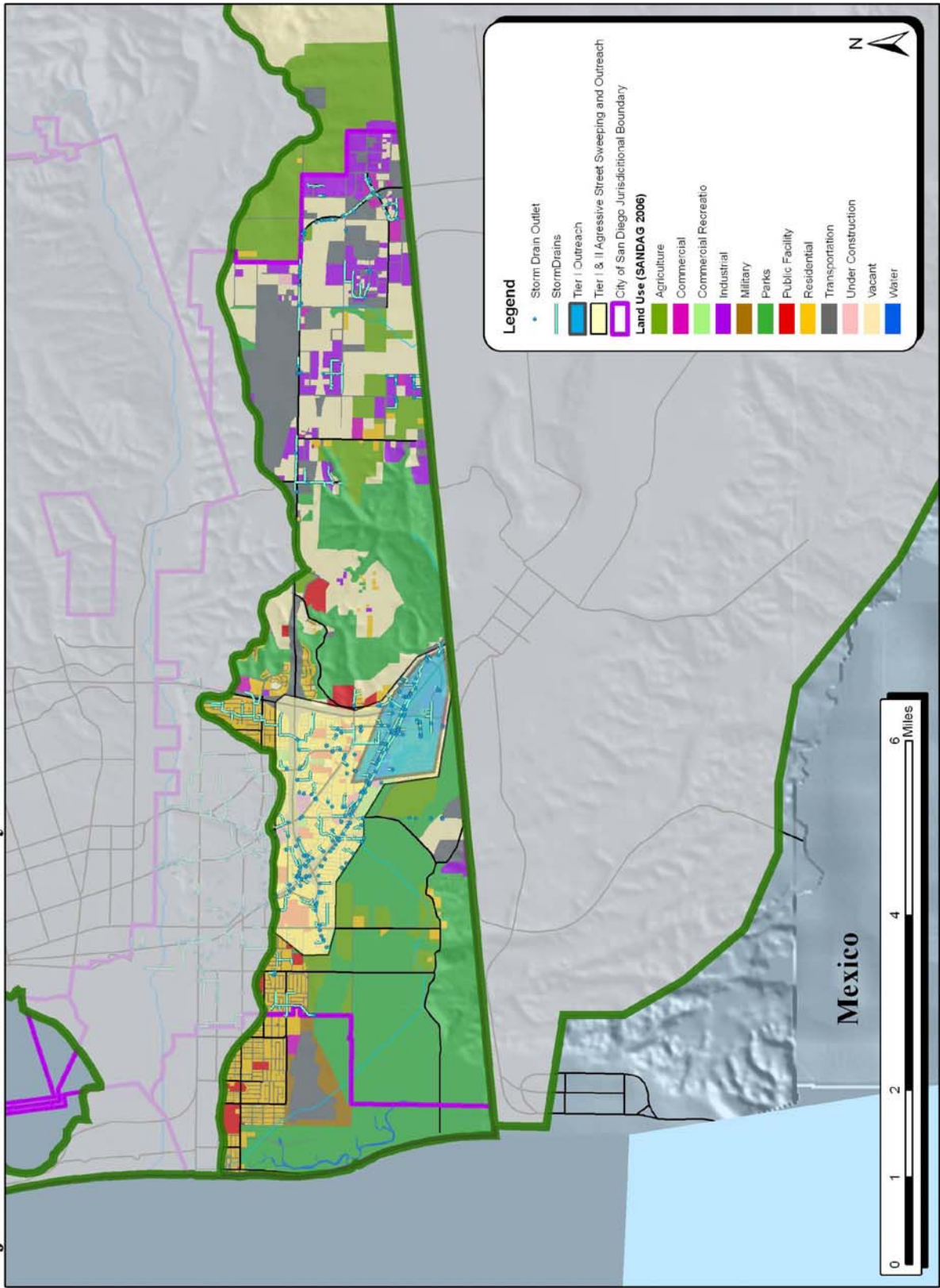
**SECTION 5 – POTENTIAL WATERSHED ACTIVITIES**

Tijuana - Map Activity Index							
Tier	Map	Project #	Type of Project	Address	Property owner	Current Use	Start Year
Tier I	5.25		Outreach				2010
Tier II	5.26	2	Green Mall	Sector 2		Commercial	2011
Tier II	5.25		Street Sweeping	Sector 2	NA	Street	2010
Tier II	5.26	1	Trash Segregation	Sector 2	City	Street	2010
Tier II	5.26	3	Trash Segregation	Sector 2	City	Street	2011
* Yellow Highlighted Projects indicate Permit Activities							
* Non Highlighted Zone indicate TMDL Activities							
*Green Highlighting indicates Initial Activities							
*Orange Highlighting indicates Future Potential Activities							



**SECTION 5 – POTENTIAL WATERSHED ACTIVITIES**

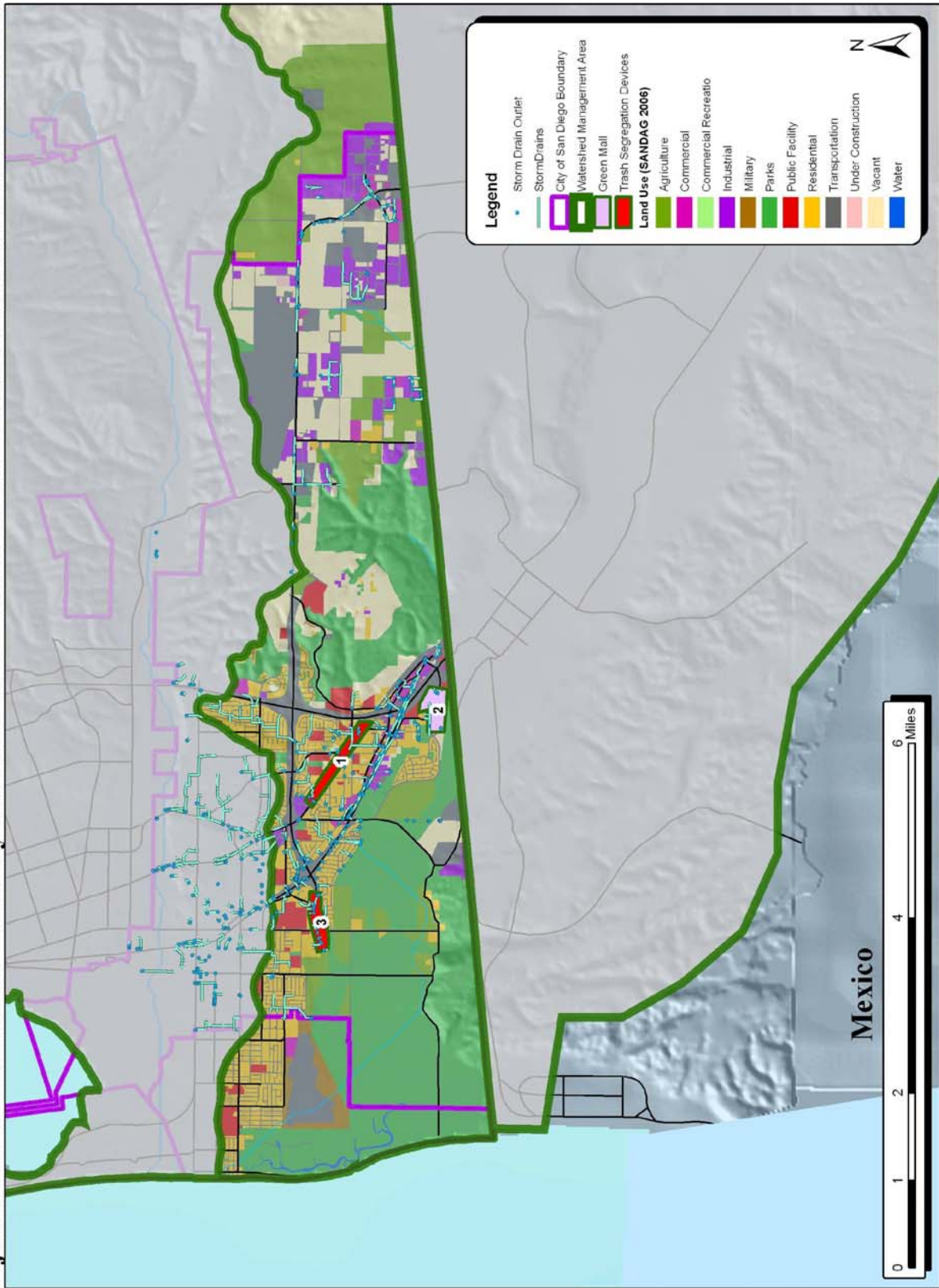
**Tijuana River Watershed - Priority Sectors I & II - Tier I & II - Future Potential Permit Activities**



**Map 5.25**

**SECTION 5 – POTENTIAL WATERSHED ACTIVITIES**

**Tijuana River Watershed - Priority Sectors I & II - Tier II & III - Future Potential TMDL Activities**



**Map 5.26**