

# **Renaming of Grape St. Park**

## **NAMING OF CITY ASSETS**

- Significant Events, People and Places
- Outstanding Individuals
- Location

**SIGNIFICANT EVENTS, PEOPLE AND PLACES.** The history of a major event, place, or person may play an important role to preserve and honor a community's history, landmarks, or prominent geographical features. The City may name a City Asset for a major event, place, or person of social, cultural or historical significance to the local area when the City Asset is associated with or located near the events, people, or places of social, cultural or historical significance. The relationship of the event, person, or place to the City Asset must be demonstrated through research and documentation.

On September 14, 1984 three San Diego Police officers were shot at Grape St. Park. Officer Timothy Ruopp came in contact with two adults with two underage girls where alcohol present. Officer Ruopp requested back up and Officer Kimberly Tonahill responded. As Officer Tonahill was patting down one of the suspects he opened fired, shooting her 4 times. The suspect then walked up and execution style, shot Officer Ruopp. Officer Gary Mitrovich was on his way to the park when he heard gunshots, he was seriously wounded having been shot in the shoulder. Officer Tonahill died that night, Officer Ruopp died two days later. Officer Mitrovich survived. Officer Tonahill was a rookie officer with eight months on the job. She was 24yrs old. Officer Ruopp was 31yrs old, married with four young children. A community effort is underway to erect a Fallen Officers' Memorial in honor of Officers Ruopp and Tonahill. After an extensive overnight search, the suspect who had been hiding in the brush nearby, was found, apprehended & taken into custody.

Outstanding Individuals. This category is designed to acknowledge individuals who have made substantial contributions to benefit the City, local community, park and recreation system, or public library. Naming or renaming a City Asset for an outstanding individual is encouraged for those person's whose significance and good reputation have been accepted in the community, City and/or State/National history. If it is not appropriate to name the larger City Asset after an individual, then naming or renaming can be subordinate to the name of the larger City Asset or the City may name an area or portion of the City Asset after an individual, including but not limited to a meeting room, structure, fountain, or garden.

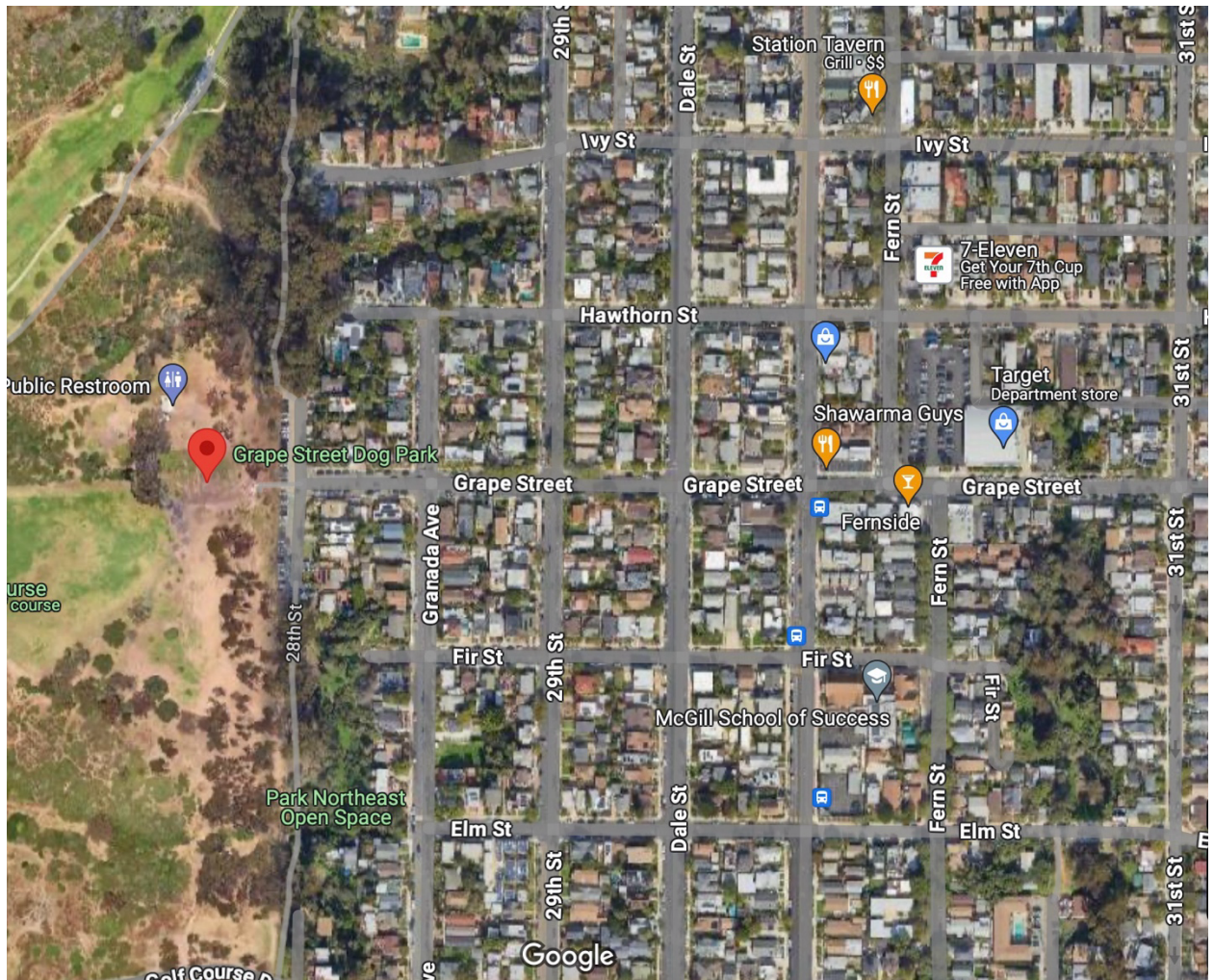
## **OUTSTANDING INDIVIDUALS**

Kimberly S. Tonahill, Timothy J. Ruopp, Gary Mitrovich, along with all the brave men and women San Diego Police Officers who risked their lives looking the armed suspect.

Would like to have the park renamed “Tonahill – Ruopp Park” along with information pertaining to the events which occurred at the park on Sept. 14<sup>th</sup> 1984, to include Officer Gary Mitrovich’s name.

**LOCATION**. As a general policy, a name should assist the public in identifying its location. The City shall first consider the name of the community area, the names of nearby geographic features, and the names of adjacent schools and streets when it is considering a naming/renaming request.

Grape St. Park in South Park



28<sup>th</sup> Street parking at Grape St.

Streets nearby – Grape St., 30<sup>th</sup> St., Fern St.

### Community Area / Community Group

D.O.G.S. – Dog owners of Grape St.

<https://dogownersofgrapest.wixsite.com/dogs>

### Schools nearby

School	Type	Grades	Distance
<a href="#">Golden Hill K-8</a>	Public - Serves this home	K to 8	0.6 mi
<a href="#">Garfield High School</a>	Public - Choice school	9 to 12	1.4 mi
<a href="#">Roosevelt International Middle School</a>	Public - Serves this home	6 to 8	1.6 mi
<a href="#">Mcjill School Of Success</a>	Charter - Choice school	K to 5	0.1 mi
<a href="#">Albert Einstein Academy Charter Elementary</a>	Charter - Nearby school	K to 5	0.5 mi
<a href="#">King-Chavez Preparatory Academy</a>	Charter - Choice school	6 to 8	1.1 mi
<a href="#">St. Augustine High School</a>	Private - Nearby school	9 to 12	0.7 mi
<a href="#">Sisu Academy</a>	Private - Nearby school	8 to 10	0.8 mi

### **COMMUNITY ORGANIZATIONS AND GROUPS WHICH HAVE SHOWN INTEREST AND SUPPORT FOR THE RENAMING OF THE PARK**

<https://www.youtube.com/watch?v=LrAc-SH4qPU>

NBC San Diego-

[https://www.nbcsandiego.com/news/local/tribute-fallen-sdpd-officers-south-park/3452071/?branch\\_match\\_id=1286318337854028048&utm\\_medium=share&branch\\_referrer=H4sIAAAAAAAAAA8soKSkottLXz0tKLk7MS8lMTc%2FXSywo0MvJzMvWd0yvTMr1DYki90gCAFyaeGUoAAAA](https://www.nbcsandiego.com/news/local/tribute-fallen-sdpd-officers-south-park/3452071/?branch_match_id=1286318337854028048&utm_medium=share&branch_referrer=H4sIAAAAAAAAAA8soKSkottLXz0tKLk7MS8lMTc%2FXSywo0MvJzMvWd0yvTMr1DYki90gCAFyaeGUoAAAA)

CBS 8 San Diego -

<https://www.cbs8.com/article/news/local/push-to-memorialize-san-diego-police-officers-killed-while-on-duty-1984/509-7ce97029-9c43-468b-9d1b-8c8d04b017c7>

San Diego Police Department – Chief Nisleit

San Diego Police Officers Association

Dog Owners of Grape St. Park – Don Casey; [Dcasey67@yahoo.com](mailto:Dcasey67@yahoo.com) 858-414-1793

San Diego local media